

Henry[®]
A **CARLISLE** COMPANY



Integrated Solutions from a Single Source

**Building
Envelope
Systems**[®]

residential

The Leader in Building Envelope Systems[®]

Every home requires thoughtful management of water, vapor, and air to create a comfortable, energy efficient, and healthy indoor environment.

No matter your materials, codes, construction methods, or climate, Henry[®], a Carlisle company offers a portfolio of solutions to help you keep the outside out and the inside safe, dry, and energy efficient with compatible weatherization and insulation systems designed to meet varying levels of protection and budget.

Our innovative Building Envelope technology works as one integrated system to improve energy efficiency while reducing construction complications and labor costs in residential building projects. As a result, our integrated Building Envelope solution extends the lifecycle and physical integrity of modern home designs.





Offering Trusted Product Performance

Henry offers a complete Residential Building Envelope System – tested for compatibility and available from a single source – designed to protect more than the homes you build. We're protecting your reputation and your bottom line with innovative, energy-efficient, sustainable solutions backed by industry-leading warranties.



Backed by Service & Operational Excellence

Our expert team collaborates to bring together the brightest minds in energy efficiency, code compliance, and installation best practices to help you navigate the ever-evolving demands of code and energy compliance. We're committed to providing unmatched service and delivering value through the strength of a national presence and the knowledge of highly localized teams so we can help you find the right solution for your market.



An Ongoing Commitment to Industry-Leading Innovation

Advanced building products make the toughest energy-efficiency goals easier to achieve without changing standard building practices.

envelope

Residential Building Envelope Systems

Henry offers a portfolio of weatherproofing and insulation products that work together as compatible and tested systems to mitigate air leakage and improve thermal performance.

By effectively sealing the building envelope, builders can prevent air leaks and moisture issues such as mold, rot, and structural damage thereby preserving the integrity of the home.



PRODUCTS	ROOF	WALL	FOUNDATION
Henry Roofing Underlayments	●		
SealTite™ PRO Spray Foam Insulation	●	●	
Henry Water Resistive Barriers, Flashing & Sealant		●	
R-Tech® Rigid Foam Insulation	●	●	●
Henry Blueskin® VPTech™		●	
Henry Foundation Waterproofing			●
UltraTouch™ Denim Insulation	●	●	

systems



- 1 For easy energy efficiency and labor savings, upgrade to Blueskin® VP Tech™, an integrated panel featuring WRB, continuous insulation, and seam-sealing in a single step.
- 2 Made from 80% post-consumer recycled cotton denim, Henry UltraTouch™ offers outstanding acoustic and thermal performance in safer, easier-to-install batts.
- 3 WeatherSmart® is a weather-resistive barrier that balances water and air intrusion and permeability, advanced high-strength polymer technology protects against the elements and provides tear resistance and UV stability.
- 4 To increase the thermal insulation value of exterior walls, use R-Tech®, a continuous layer of expanded polystyrene (EPS) rigid insulation panels.
- 5 When installed on the underside of roof sheathing, SealTite™ PRO Spray Foam Insulation substantially improves energy performance by creating an unvented, conditioned attic.



Total Weather Protection

Easy as 1-2-3

Prevent the development of mold, mildew, and rot inside walls by keeping water out of the building with the Henry® 1-2-3 Moisture Control System™. Simply choose the water-resistive barrier, flashing, and sealant that works best for your project.

Use the complete, compatible system to qualify for a transferrable 15-year warranty. In the unlikely event of a leak caused by product failure, the repairs are covered for both materials and labor with a single point of contact.

- ✓ No complicated claims process
- ✓ No original purchase receipt required
- ✓ No reduction in reimbursement value for the duration of the warranty

Blueskin® VP100

SELF-ADHERED AIR AND WATER BARRIER

Next-generation peel-and-stick vapor permeable, water-resistant air barrier membrane protects against water and moisture intrusion while allowing walls to breathe.

- ✓ Self-seals around nails and fasteners
- ✓ Delivers more than 95% drainage efficiency
- ✓ Eliminates air gaps to help meet stricter energy codes and lower heating and cooling costs

Specifications:

6", 9", 12", and 48" x 100 lineal feet



Mechanically-Fastened WRBs



WeatherSmart® D

Drainable weather-resistive barrier that performs at the highest drainage efficiency level, making it suitable for use in any climate.

- ✓ Textured surfaces moves water down the wall
- ✓ Achieves more than 95% drainage efficiency
- ✓ Code compliant for use behind masonry
- ✓ Part of approved NFPA 285 assemblies

Specifications:

5', 9' or 10' x 125 lineal feet



WeatherSmart® Commercial

- Outstanding surfactant resistance and 12-month UV stability
- Best-in-class tear resistance
- Part of approved NFPA 285 assemblies
- Excellent balance between water resistance and permeability

Specifications:

5' x 200 lineal feet; 10' x 125 lineal feet

WeatherSmart®

- Excellent balance between water resistance and permeability
- Good tear resistance and UV stability
- Part of approved NFPA 285 assemblies

Specifications:

3' x 100', 4.5' x 200', 9' x 150', 10' x 100', 10' x 150'

WeatherSmart® Rainscreen

- Enhances ventilation and improves drying between barrier and cladding
- 3D matrix channels water down and out of wall system
- Serves as a protective layer between stucco and weather-resistant barrier
- Meets code requirements (6mm)
- Compatible with all standard cladding types

Specifications:

39" x 61.6 lineal feet

Hydro Tex™ D

- Labor saving two-ply protection in one pass
- Crush-resistant drainable pattern
- Achieves more than 95% drainage efficiency
- Part of approved NFPA 285 assemblies

Specifications:

40" x 48.6 lineal feet

Two-Ply Super Jumbo Tex® 60 Min

- 15x more water resistant than the requirement for Grade "D" paper
- Tear resistant, two-ply construction
- Part of approved NFPA 285 assemblies

Specifications:

40" x 48.6 lineal feet

Two-Ply Jumbo Tex®

- 10x more water resistant than the requirement for Grade "D" paper
- Protects against water intrusion and condensation
- Ideal for stucco, fiber cement, brick, vinyl & wood siding applications

Specifications:

40" x 48.6 and 75 lineal feet

Super Jumbo Tex® 60 Min

- 6x more water resistant than the requirement for Grade "D" paper
- Ideal for stucco and stone applications
- Part of approved NFPA 285 assemblies

Specifications:

40" x 72 lineal feet

Jumbo Tex®

- 2x more water resistant than the requirement for Grade D paper
- Cost effective protection against moisture
- Ideal for stucco, fiber cement, brick, vinyl & wood siding applications

Specifications:

40" x 97.2 and 150 lineal feet

PlyDry®

- Meets code requirements at an affordable price
- Semi-translucent color aids in locating studs
- UV Resistant

Specifications:

9' and 10' rolls by 100 and 150 lineal feet



Blueskin[®] ZEROFLASH[™]

Despite installation temperatures as low as 0 °F, project timelines stay on track, even in extreme temperatures. Blueskin ZeroFlash aggressively adheres to multiple substrates across a wide range of installation temperatures for maximum performance.

- ✓ Can be installed in temperatures as low as 0 °F
- ✓ Impermeable to air, moisture vapor, and water
- ✓ Self-seals around nails and fasteners

Specifications:

4", 6", 9", 12" x 75 lineal feet



FortiFlash[®] BUTYL

- ✓ Self-seals around nails and fasteners
- ✓ Can withstand extreme temperatures up to 250 °F
- ✓ Split-back release for easy handling
- ✓ Compatible with standard sealants, EPDM & flexible vinyl

Specifications:

4", 6", 9", 12" and 18" x 75 lineal feet

SELF-ADHERED FLASHING

FortiFlash Fusion®

- Can withstand extreme temperatures up to 180 °F
- Durable butyl-based core and facer protects against delamination and tears
- Self-seals around nails and fasteners for lasting watertightness

Specifications:

4", 6", 9", 12" and 18" x 75 lineal feet

FortiFlash® 25 and 40 mil

- Rubberized asphalt core protects against delamination & tears
- Self-seals around nails and fasteners
- Compatible with Moistop Sealant

Specifications:

4", 6", 9", 12", 18" and 36" x 75 lineal feet

FortiFlex® Butyl

- Creped film offers exceptional stretch with minimal bunching
- Can be installed in temperatures as low as 10 °F
- Resists UV exposure for up to one year
- Self-seals around nails and fasteners

Specifications:

6" and 9" x 50 lineal feet

Moistop® E-Z Seal

- Includes 3" adhesive backing strip for secure installation
- Easy integration into the weather-resistive barrier
- Bonds reliably to plywood, OSB, aluminum, wood & vinyl windows

Specifications:

4", 6", 9" and 12" x 75 lineal feet

MECHANICALLY-FASTENED FLASHING

Moistop neXT®

- Engineered to resist tears and rips
- Provides water resistance up to 150 hours
- Mold resistance per ASTM G21

Specifications:

6", 9" and 12" x 200 lineal feet

Moistop PF®

- Resists cracking and curling
- Mold resistance per ASTM G21
- Bonds reliably to plywood, OSB, aluminum, wood & vinyl windows

Specifications:

6", 9", 12" and 18" x 300 lineal feet

LIQUID-APPLIED FLASHING

Air-Bloc LF® Liquid Flashing

- Bonds and cures in wet weather
- Can be installed in temperatures as low as 20 °F
- Self-seals around nails and fasteners for lasting watertightness
- Low VOC

Specifications:

20 oz sausage

FLASHING ACCESSORIES

Moistop Corner Shield® Flexible

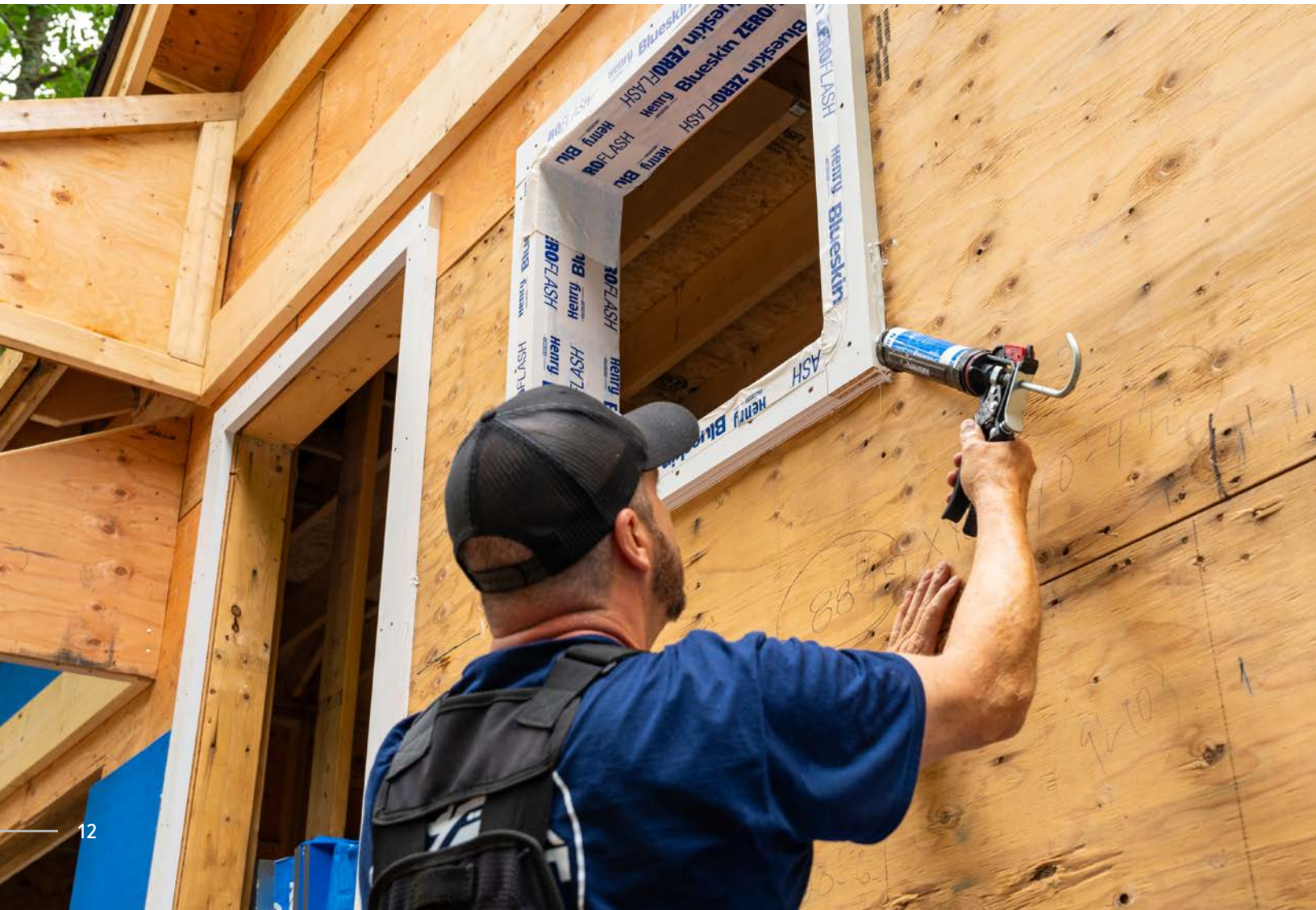
- Flexible Corner Flashing Protection
- Easily conforms to the window's rough opening
- Flexible polyolefin construction can correct for framing irregularities
- Available in 50 count cartons

Moistop Corner Shield® Rigid

- Rigid Corner Flashing Protection
- Molded corners easily fit into window rough opening
- Made from durable high density polyethylene plastic

Sealant, Primers, and Accessories

Henry sealants create a tough and durable watertight bond for window, door, and other flashing applications. These sealants can be applied easily, skin over the surface quickly, and provide superior weather resistance.



Moistop® Sealant

- Optimal adhesion on most surfaces
- Conforms to any shape and fills joints up to 1/2" wide
- Paintable
- Low VOC formulation

Specifications:

10 oz and 20 oz sausage

Henry® 212 All Purpose Crystal Clear Sealant

- Provides clear, invisible patch
- Excellent adhesion, even on wet surfaces
- Remains flexible over time so it doesn't crack
- Must be used with Blueskin® VP100

Specifications:

10.1 oz tube

Blueskin® Spray Prep

- Easily applied and quick-setting
- Aggressive tack provides adhesion of membrane
- Suitable for application at normal and low temperatures
- For use with Blueskin® branded products only

Specifications:

15 oz spray can

Aquatac™ Primer

- Quick drying
- Easily applied by spray, brush or roller
- Non-flammable during application and low VOC
- Can be installed in temperatures as low as 25 °F

Specifications:

1 gallon, 5 gallon

Sheathing Tape

- Aggressive acrylic adhesive
- Optimized performance with all Henry weather-resistive barriers
- Excellent balance of tack, peel and tensile strength
- Adheres in temperatures down to 10 °F

Specifications:

1.875" x 55 yards, 3" x 55 yards



Roofing Systems

The complete line of Henry roofing underlayments includes waterproofing solutions for use under shingles, tile, metal, shake, slate, and other sloped roofing surfaces.

All Henry roofing underlayments meet or exceed industry standards and can be installed during all seasons.



Blueskin® PE200HT High Temperature Roof Underlayment

- Strong adhesion in high temperatures, up to 260 °F
- Suitable for use in all geographic regions under metal
- Compound-to-compound selvedge for optimal sealing
- Premium skid-resistant textured blue film surface

Specifications:
36" x 65 lineal feet

Blueskin® RF200TM Self-Adhered Tile & Metal Underlayment

- For use under architectural metal, tile, slate or cedar shakes
- Self-seals around nails and fasteners for lasting watertightness
- Fully adhered system prevents lateral moisture migration
- Premium skid-resistant textured blue film surface
- Split-back release liner for easier handling and faster application

Specifications:
36" x 65 lineal feet

Blueskin® RF200 Ice and Water Barrier

- Self-seals around nails and fasteners for lasting watertightness
- Fully adhered system prevents lateral moisture migration
- Premium skid-resistant textured blue film surface
- Split-back release liner for easier handling and faster application

Specifications:
36" x 65 lineal feet

Eaveguard® Self-Adhered Shingle Underlayment

- Self-seals around nails and fasteners for lasting watertightness
- Sand-surfaced for reliable foot grip and safer installation
- Split-back release liner for easier handling during application
- Exceptional tear resistance and extended exposure time for all season performance

Specifications:
36" x 65 lineal feet

Foundation Waterproofing

Henry provides a wide range of foundation and below-grade waterproofing solutions to prevent water infiltration, from self-adhered membranes and drainage boards to under and over slab vapor retarders.

Blueskin® WP200 Sheet Waterproofing

- SBS membrane flexible at low temperatures
- Fully adhered systems prevent lateral water movement
- No flame required
- Factory controlled thickness
- Negligible odor during application

Specifications:

36" x 66.7 lineal feet

MiraDRAIN® 2000

- Economical drainage solution for shallow-depth foundation walls
- Intermediate flow rate and compressive strength ideal for residential and light commercial applications.
- Easy to handle and install
- Chemically resistant

Specifications:

48" x 50 lineal feet

Moistop® Tape

- Adheres to difficult-to-bond surfaces
- Seals protrusions in under slab vapor barriers
- Provides high adhesion over a wide temperature range
- Designed for use with Moiststop Ultra® 15 and Moiststop Ultra® 10

Specifications:

4" x 180 lineal feet

Moistop® Ultra 15

- Exceeds ASTM-E-1745 class "A", "B" and "C" standards
- Exceptional tear strength
- Puncture resistant

Specifications:

144" x 163 lineal feet

Moistop® Ultra 10

- Exceeds ASTM-E-1745 class "A", "B" and "C" standards
- Exceptional tear strength
- Puncture resistant

Specifications:

168" x 210 lineal feet



Continuous Insulation

Continuous Insulation is one of the fastest and easiest ways to exceed code and reach energy-efficiency goals when applied to the exterior of a home. CI provides a seamless barrier against heat transfer, preventing the frame from serving as a thermal bridge between the interior and exterior of the home.



To reduce heat gain in the summer and heat loss in the winter, a home should be properly insulated from the roof to the foundation.

Choosing the Right Material

Henry R-Tech® (EPS) and Blueskin® VPTech™ (GPS) are made from rigid, tough closed-cell foam, and are the most versatile rigid insulation materials, offering stable thermal performance over time. Both can be used throughout the building envelope – roof, walls, floors, and below grade.

Henry offers EPS and GPS products in a range of options to upgrade the thermal insulation value of your exterior walls. Combine them with our simple Henry® 1-2-3 Moisture Control System for a complete residential building envelope system and a 30-year building envelope system warranty – from a single, reliable source.





PTECH
Air and Moisture Protection



Blueskin® VPTECH™

Integrated Panel Combines a WRB, Continuous Insulation, and a Seam Sealing Solution into a Single-Step Product.

- ✓ Install continuous insulation, an air and water barrier, and seam tape in a single step
- ✓ Save time while improving thermal and moisture protection
- ✓ Lightweight panel includes integrated seam sealing strip to create a continuous air barrier
- ✓ Blueskin VPTEch self-seals around nails and fasteners for maximum moisture protection

Specifications:

R-Value 5: Nominal 1" thick, panels available in 4' x 8', 4' x 9', 4' x 10', 4' x 11', 4' x 12'

R-Value 2.5: 0.53" thick, 4' x 8' panels

R-Value 7.5: 1.625" thick, 4' x 8' panels

R-Value 10: 2.25" thick, 4' x 8' panels

Our R-Tech® continuous insulation products are moisture resistant, quick drying and insect resistant. Unlike other rigid foam products, EPS and GPS do not experience thermal drift during their service life and are warranted for long-term, stable R-values.

R-Tech Platinum® GPS

- Achieve 20% higher R-value per inch than standard EPS
- Two-sided factory laminated metalized facers improve jobsite handling
- Ideal for space, or assembly constrained applications where reduced thickness is valued

Specifications:

R-Value 5 per 1"

1/2", nominal 1", 1 1/2", 2' and 3" thickness x 4' x 8' panels

R-Tech® EPS

- More cost effective than other rigid foam options
- Excellent dimensional stability, compressive strength and water resistance properties
- Does not contain any dyes and the foam core is 100% recyclable

Specifications:

R-Value 3.9 per 1"

1/2", 1", 1 1/2", 2' and 3" thickness x 4' x 8' panels

¹Based on time savings from installing sheathing, continuous insulation, and water resistive barrier as separate components. Installation time trials conducted by Henry with independent installers, August 2023.



ULTRATouch™
RECYCLED DENIM INSULATION



Sustainability Meets Insulation

UltraTouch Recycled Denim Insulation, also known as natural cotton fiber insulation, is a high-performance insulation that's made from recycled denim clothing. This insulation is suitable for residential use in the same places as fiberglass or mineral wool batts would be used—between open roof rafters, ceiling joists and wall studs.

- ✓ Eco-Friendly
- ✓ No Itchy Fibers
- ✓ No VOCs
- ✓ Sound Absorption
- ✓ Fire Resistant
- ✓ Resistant to Mold and Mildew
- ✓ Thermal Performance
- ✓ Easy Installation





No Itchy Fibers

Recycled denim insulation with the natural benefits of cotton

Interior & Exterior Walls



R13	3.5" Thick	15" Wide	93" Long	77.52 sq. ft. PER BUNDLE
R19	5.5" Thick	15" Wide	93" Long	48.45 sq. ft. PER BUNDLE



No Gloves

No fiberglass or chemical irritants means no itch and no protective gear



Sound Absorption

Cotton fibers trap sound waves and enhance thermal performance for a quieter, energy efficient space



Eco Friendly

Made with 80% post-consumer denim to reduce environmental impact



Fire Resistant

Treated with a simple borate solution for fire, mold, and mildew resistance

Spray Foam Insulation

For more comfortable and consistent indoor temperature control and ultimate energy efficiency

No more guessing whether you will meet air tightness and energy-efficiency targets for a high-performance build; meet code nearly 100% of the time when you use spray foam insulation.

Our SealTite PRO® spray foam products are thoroughly tested for quality, safety, and consistent performance. SealTite Pro is the industry's most third-party certified spray foam with the most UL fire-rated assemblies and the first and only verified EPD (Environmental Product Declaration) in our portfolio.

SealTite PRO is available in both Open Cell and Closed Cell formulations to fit your project needs.



Open Cell Products – SealTite Pro

SealTite Pro's Open Cell spray foam products feature light-density spray foams that provide a high R-value per inch, expanding into crevices and cracks to create a precision seal that beats traditional fiberglass, cellulose, and other loose-fill products.

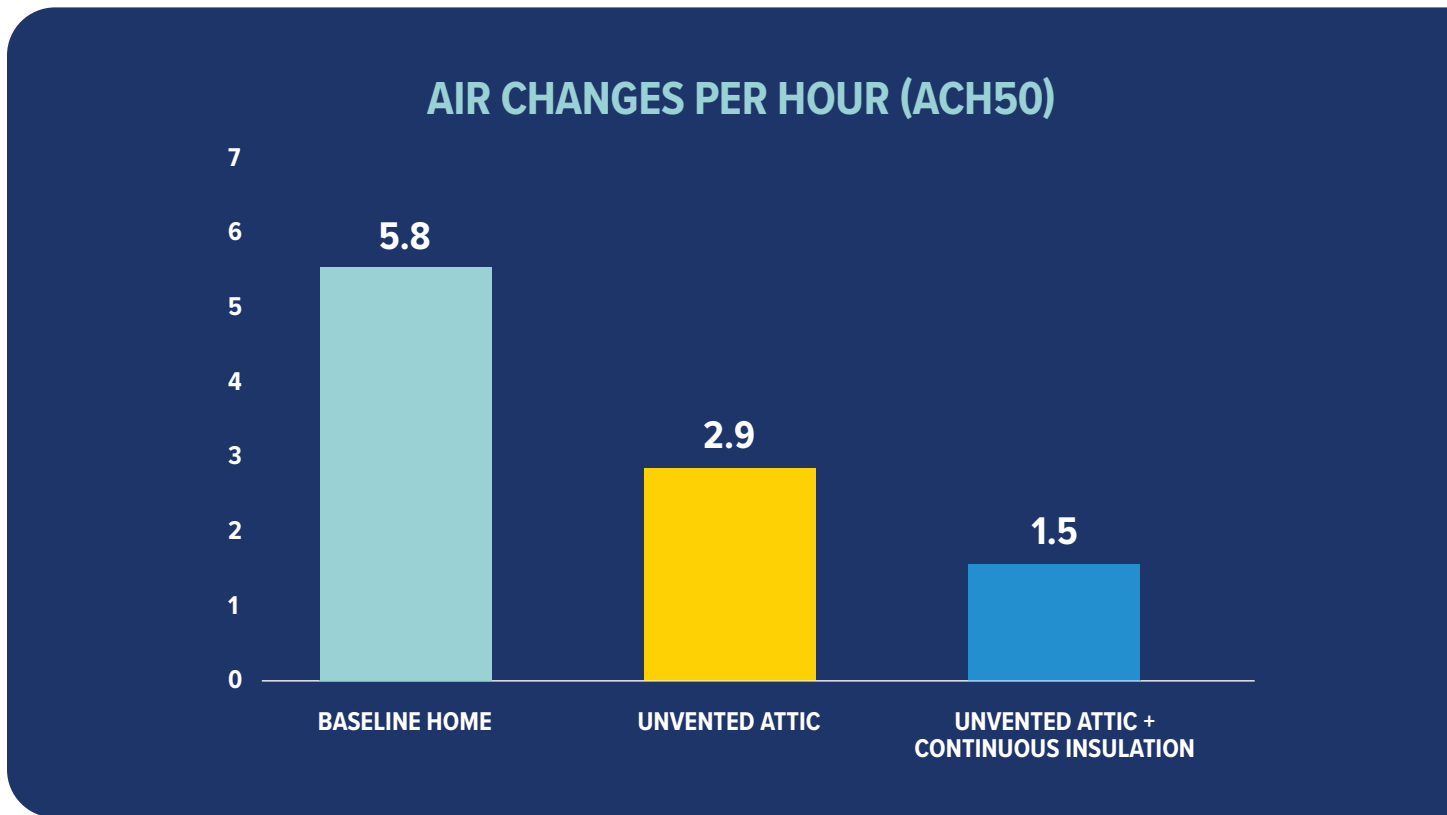


Closed Cell Products – SealTite Pro

For advanced temperature control, superior moisture resistance, and added structural support, SealTite Pro's closed cell higher-density spray foam products deliver results. With an even tighter seal and higher R-value per inch, closed-cell spray foam is ideal for residential, commercial, and industrial projects.

Tested Systems for Proven Performance

Independent testing compared baseline homes with a vented attic and more traditional materials to homes with an unvented attic insulated SealTite PRO Open Cell Spray Foam and Blueskin VPTech. Homes insulated with SealTite Pro Open Cell Spray Foam and Blueskin VP Tech saw hourly air changes reduced by 73%.



Testing conducted with independent installers.

Blower door tests conducted by Home Innovation Research Labs, February 2024.

Industry leading

Total Weather Protection: 15 years of Coverage



The Henry 1-2-3 Moisture Control System Warranty offers 15 years of coverage.

Prevent leaks, mold and costly call-backs in 3 easy steps:

Weather Resistive Barriers

First, choose a weather-resistive barrier that fits your needs from our extensive line.

Flashing

Next, select the flashing(s) that works for your application. We have mechanically attached and self-adhesive products to consider.

Sealant

Lastly, use Moistop® Sealant to provide long lasting protection against moisture intrusion.

Warranty

In the unlikely event of a leak caused by product failure, the repairs are covered for both materials AND labor with a single point of contact. No complicated claim process.

No digging through files to find your original purchase receipt. No reduction in reimbursement value based on how long the product has been installed.

The protection provided by this warranty is unsurpassed on the market.

ng warranties

30-Year Residential Building Envelope System[®] Warranty



Select a compatible, integrated system from our family of leading-edge building products for a 30-Year Residential Building Envelope System Warranty.

In the unlikely event of a leak caused by product failure, the repairs are covered for both materials AND labor with a single point of contact. There is no complicated claim process and no prorated reimbursement based on length of install. The 30-Year Residential Building Envelope System Warranty includes a one-time transfer so you can confidently hand homebuyers the keys to a high-quality, energy efficient, and comfortable home.

To qualify for the 30-Year Building Envelope System Warranty, select one product from each of the categories below.

1. WEATHER RESISTIVE BARRIER

- › Blueskin VPTech
- › Blueskin VP100
- › WeatherSmart
- › WeatherSmart Commercial
- › WeatherSmart D
- › Hydro Tex D
- › Super Jumbo Tex Brands
- › Jumbo Tex Brands

2. FLASHING

- › Blueskin Zero Flash
- › Blueskin Butyl
- › Fortiflash Fusion
- › FortiFlash Butyl
- › Fortiflex Butyl
- › Moistop neXT
- › Moistop PF
- › Moistop E-Z Seal
- › AirBloc LF

3. SEALANT

- › Moistop Sealant

4. INSULATION

- › Blueskin VPTech
- › R-Tech EPS Continuous Insulation
- › Insulfoam Tongue & Groove
- › Insulfoam EPS and GPS Rigid Insulation
- › SealTite PRO Open-Cell Spray Foam Products

A Partnership Designed to Build Confidence[®]

With Henry, you benefit from a single source supplier with local teams who understand the needs of your market. We provide dedicated customer & technical service support and can recommend a network of certified installers. Henry trained contractors will help ensure your homes are completed right the first time, reducing liability and keeping schedules on track.

WE HELP NAVIGATE CODE CHANGE

Our team understands regional challenges and opportunities related to code and above-code programs.

WE IDENTIFY SMALL CHANGES FOR A BIG IMPACT

Our compatible building envelope systems can be customized based on construction methods, climate zone, and budget. We can help you compare options to determine the most cost-effective solution.

WE SUPPORT PROJECTS FROM START TO FINISH

From energy modeling to installation support, our team is here to help ensure homeowner satisfaction.

WE WARRANTY OUR SYSTEM FOR UP TO 30 YEARS

Select a compatible, integrated system from our family of leading-edge building products for a 30-Year Residential Building Envelope System Warranty.



Building Envelope Systems[®]

Roofing | Air Barrier | Waterproofing



Ask us about other Henry[®] solutions that help manage the flow of water, air, vapor and energy.

Visit [Henry.com](https://henry.com)