

# LOMANCO® The ORIGINAL 750 SLANT BACK VENT

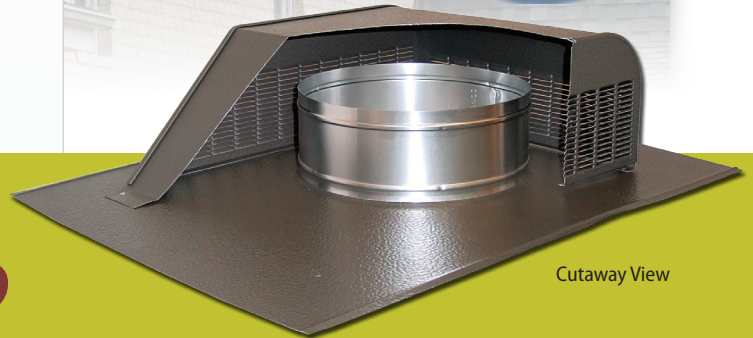


## THE ORIGINAL

- ▶ The Original Slant Back Design
- ▶ The Original Weather Proof Design
- ▶ The Original Bird Proof Design
- ▶ The Original Upward Discharging Louver Design

## FIELD TESTED & PROVEN

- ▶ Field Tested & Proven for Over 60 Years
- ▶ Field Tested & Proven to Prevent Roof Discoloration
- ▶ Field Tested & Proven Stack Effect for Enhanced Airflow
- ▶ Field Tested & Proven Customer Satisfaction

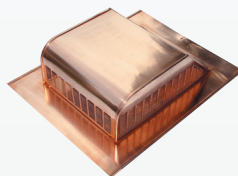


Cutaway View

**OFTEN IMITATED  
NEVER DUPLICATED**

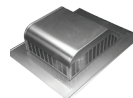
**North American Contractors' "Roof Vent of Choice" for over 60 years!**

Model	Overall Size (in.)	Opening Size (in.)	NFA (in. <sup>2</sup> )
750	16 x 20 <sup>5</sup> / <sub>16</sub> x 5	8	50
750-G Galvanized Steel	16 x 20 <sup>5</sup> / <sub>16</sub> x 5	8	50
750-E	23 x 27 <sup>1</sup> / <sub>4</sub> x 5	8	50
750-S	16 x 20 <sup>5</sup> / <sub>16</sub> x 5	8	50
750-GS Galvanized Steel	16 x 20 <sup>5</sup> / <sub>16</sub> x 5	8	50
750-ES †	23 x 27 <sup>1</sup> / <sub>4</sub> x 5	8	50

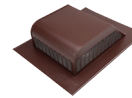


**Specialty Item: 750 is also available in Copper.**

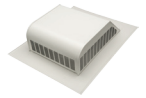
Colors Available:



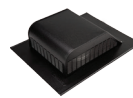
Mill Finish



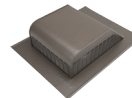
Brown



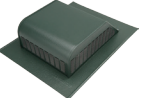
White



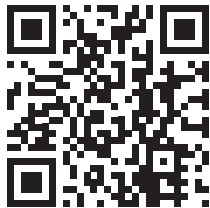
Black



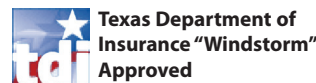
Weathered Bronze



Forest Green



Want more info?  
Scan this QR  
code with your  
smartphone.



LO405-0314

Find us on  
**Facebook**

Follow us on  
**Twitter**



**1.800.643.5596 • Lomanco, Inc. • lomanco.com**

# LOMANCO® VENTS 700 SERIES

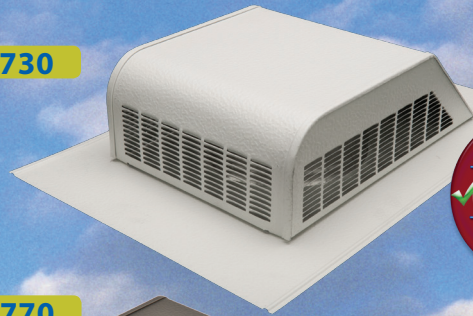
# Roof Vents

**Lomanco 700 Series Roof Louvers** are built with three outward and upward discharging side vents to prevent unsightly roof streaking that is so common with ordinary roof louvers. This exclusive Lomanco design also prevents the problem of bird and animal infiltration while providing maximum attic exhaust air flow and weather protection.

## FEATURES

- ▶ Designed to prevent roof discoloration.
- ▶ Three sides louvered for greater air flow.
- ▶ Embossed aluminum finishes for added strength, extended paint life, and blending appearance with shingles.
- ▶ **750 is the ORIGINAL slant back vent. See reverse for full details.**
- ▶ 700 has neoprene damper for use as kitchen/bathroom exhaust vent.
- ▶ 730 is a smaller version of a 750 and included in the EVA Combo vent package.
- ▶ 750-E is a 750 with an extended flange size.
- ▶ Model 750-ES provides enhanced weather protection.
- ▶ 750-G; heavy duty galvanized steel construction.
- ▶ 750-S & 750-GS; metal screen insert for enhanced weather protection.
- ▶ 770 is a larger version of a 750.
- ▶ 770-D is a twin 770; off-ridge vent.

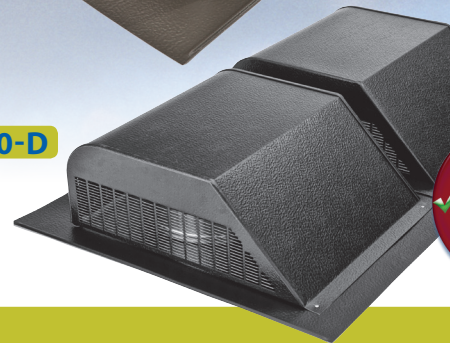
730



770



770-D



**PREVENTS UNSIGHTLY  
ROOF DISCOLORATION!**

Model	Overall Size (in.)	Opening Size (in.)	NFA (in. <sup>2</sup> )
730*	12 <sup>3</sup> / <sub>16</sub> x 17 <sup>3</sup> / <sub>4</sub> x 4	6 1/4	30
750*	16 x 20 <sup>5</sup> / <sub>16</sub> x 5	8	50
750-G* Galvanized Steel	16 x 20 <sup>5</sup> / <sub>16</sub> x 5	8	50
750-E	23 x 27 <sup>1</sup> / <sub>4</sub> x 5	8	50
770*	16 <sup>5</sup> / <sub>8</sub> x 22 <sup>3</sup> / <sub>8</sub> x 6	9 1/2	70
770-D*	32 <sup>1</sup> / <sub>2</sub> x 22 <sup>3</sup> / <sub>8</sub> x 6	Two 9 1/2	140
700	16 x 20 <sup>5</sup> / <sub>16</sub> x 5	8	—
750-S	16 x 20 <sup>5</sup> / <sub>16</sub> x 5	8	50
750-GS* Galvanized Steel	16 x 20 <sup>5</sup> / <sub>16</sub> x 5	8	50
750-ES †	23 x 27 <sup>1</sup> / <sub>4</sub> x 5	8	50

Colors Available:



730,750,770,770-D

MIAMI-DADE COUNTY  
APPROVED



CSA-approved  
(750) 83070



Texas Department of  
Insurance "Windstorm"  
Approved



ACCEPTED FOR USE BY  
CAL FIRE  
California Office of the  
State Fire Marshal (OSFM)

## How many Roof Vents do you need?

Your attic floor space to be ventilated  
in square feet.

1000 1500 2000 2500 3000 3500

### ROOF VENT SYSTEM

730	8	12	16	20	24	28
750	5	8	10	12	15	17
770	4	6	7	9	11	12
770-D	2	3	4	5	6	6

### ROOF VENT SYSTEM

C416	10	16	20	24	30	34
C616	8	10	14	18	20	24
C816	4	6	8	10	12	14
105/190	4	6	8	10	10	12
140	4	6	6	8	10	10
SV-10	4	6	8	10	12	14
DA-4	8	10	14	18	20	24

LO405-0314

Find us on  
**Facebook**

Follow us on  
**Twitter**



1.800.643.5596 • Lomanco, Inc. • [lomanco.com](http://lomanco.com)