

# OMG Purlin Fastener

## PRODUCT DATA SPECIFICATIONS

### PRODUCT DESCRIPTION

The OMG Purlin Fastener is designed for attaching single-ply membrane systems to 12–18 gauge (2.8–1.25mm) structural steel purlins in standing seam metal roof retrofit applications.

The OMG Purlin Fastener has a ¾-in. (20mm) drill point which allows the screw to quickly drill through the purlin before the threads engage into the standing seam metal roof. This greatly reduces point burnout and breakage as well as eliminates “jacking” between purlin and standing seam metal.

The OMG Purlin Fastener is available in lengths from 2-in. to 8-in. (50 to 200mm).

The OMG Purlin Fastener is Factory Mutual and Miami-Dade County Approved.

### FEATURES & BENEFITS

- The OMG Purlin Fastener drills through up to 12 gauge (2.8mm) steel in seconds.
- The ¾-in. (20mm) drill point allows the fastener to be drilled through the purlin before the threads engage into the standing seam metal roof.
- Low profile hex head has a smooth surface to ensure that there is no damage to the membrane.
- FM and Miami-Dade County Approved.

### COATING

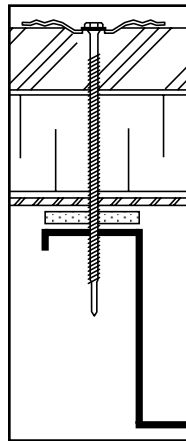
OMG CR-10 corrosion resistant coating exhibits less than 15% red rust after 30 Kesternich cycles. CR-10 coating exceeds FM Approval Standard 4470.

### APPLICATION

The OMG Purlin Fastener must penetrate the purlin a minimum of 1-in. (25mm). This ensures a minimum of ¼-in. (6mm) thread penetration into the structural member.

Using a screw gun with a maximum of 1800 RPM, drive the fastener through the purlin until a slight depression is seen around the plate.

**Note: Caution should be taken not to overdrive the fastener causing stress plate surface to deflect more than ¼-in. (1.6mm).** Prior to job bid, contact OMG to visit the job site and inspect the deck.



### PLATES & ACCESSORIES

Use 2-in. (50mm) appropriate stress plate.

For best installation results, use a high torque, low RPM screw gun with a maximum of 1800 RPM. **See Accessories section.**

### APPROVALS



**Factory Mutual listings refer to this product as OMG Purlin.**



USE WITH  
**P**  
DECK TYPES

### PHYSICAL DATA \*

The data below is constant for each OMG Purlin Fastener.

HEAD	THREAD
¼" (6mm) Hex .435" (11.04mm) Diameter	.210" (5.33mm) Diameter
SHANK	COATING
.170" (4.31mm) Diameter	CR-10

### ORDERING INFORMATION

CAT. NO.	LENGTH IN (MM)	THREAD IN (MM)	PKG	WEIGHT LBS (KG)
PUR200	2" (50)	1.125" (29)	1,000	15 (6.81)
PUR334	3¾" (95)	Full	500	13 (5.90)
PUR434	4¾" (120)	3" (76mm)	500	16 (7.26)
PUR534	5¾" (145)	3" (76mm)	500	20 (9.08)
PUR700	7" (175)	3" (76mm)	500	24 (10.89)
PUR800	8" (200)	3" (76mm)	500	27 (12.25)

Each OMG Purlin Fastener has a ¾-in. (20mm) drill point. Therefore, the effective fastening length is ¼-in. (20mm) less than actual length.

\*All sizes are nominal.

#### KEY:

<b>S</b> Steel	<b>SC</b> Structural Concrete
<b>W</b> Wood	<b>LC</b> Lightweight Concrete
<b>G</b> Gypsum	<b>LWIC</b> Lightweight Insulating Concrete
<b>P</b> Purlins	<b>CWF</b> Cementitious Wood Fiber

# OMG Purlin Fastener

## PRODUCT DATA SPECIFICATIONS

### SPECIFICATION

The fastener will be an OMG Purlin Fastener with a nominal shank diameter of .170-in. (4.31mm) and a thread diameter of .210-in. (5.33mm). The OMG Purlin Fastener will be used with a Factory Mutual approved OMG 2-in. (50mm) round pressure plate or batten bar. The fastener must be Factory Mutual approved.

### APPLICATION

Using a screw gun with a maximum of 1800 RPM, drive the OMG Purlin Fastener into the purlin until a slight depression is seen around the plate. The OMG Purlin Fastener must penetrate through the purlin a minimum of 1-in. (25mm).

**Note: Caution should be taken not to overdrive the fastener causing the stress plate to deflect more than 1/16-in. (1.6mm).** Prior to job bid, contact OMG to visit the job site and test the fastener.

### PHYSICAL DATA\*

The data below is constant for each OMG Purlin Fastener.

HEAD		THREAD	
1/4" (6mm) Hex .435" (11.04mm) Diameter		.210" (5.33mm) Diameter 16 T.P.I.	
SHANK		COATING	
.170" (4.31mm) Diameter		CR-10	
		PACKAGING	
		500/carton 2" (50mm) – 1,000/carton	

\*All sizes are nominal.

### PURLIN FASTENER LENGTH SELECTION PROCEDURE

PURLIN FASTENER LENGTH	COMBINED THICKNESS OF MEMBRANE AND/OR EXISTING SUBSTRATE	
	USABLE LENGTH	MAX. TOTAL THICKNESS
2" (50mm)	1 1/8" (30mm)	1" (25mm)
3 3/4" (95mm)	3" (75mm)	2 3/4" (70mm)
4 3/4" (120mm)	4" (100mm)	3 3/4" (95mm)
5 3/4" (145mm)	5" (125mm)	4 3/4" (121mm)
7" (175mm)	6 1/4" (160mm)	6" (152mm)
8" (200mm)	7 1/4" (185mm)	7" (178mm)



ROOFING PRODUCTS

153 BOWLES ROAD, AGAWAM, MA 01001 USA  
800-633-3800 413-789-0252 OMGROOFING.COM

Copyright © 2015 OMG, Inc. All rights reserved.

Superior productivity.  
Superior performance.

