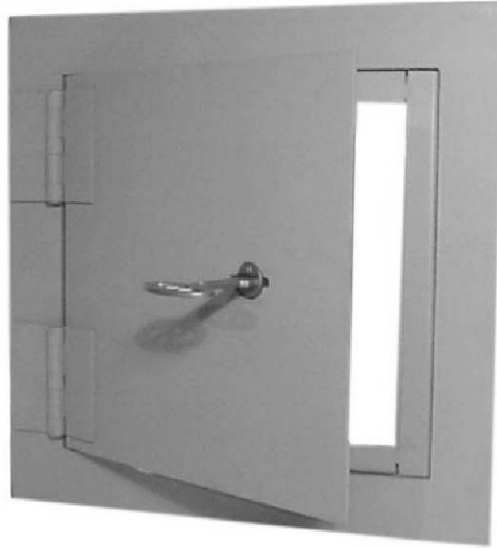


**SLA Series****Slammer Access Doors**

**Doors** are designed to provide security access with the strength and durability to withstand abusive and vandal-prone conditions prevalent in many institutions. Without sacrificing security, these doors allow maintenance personnel access to plumbing chases, shut-off valves and electrical apparatus located behind finished walls.

**Door** is fabricated from 10 gage steel.

**Frame** is 3/16" x 2" x 2" angle steel, welded and with pre-punched mounting holes.

**Latch** is a detention type dead bolt lock with paracentric key, when requested.

**Hinges** are heavy duty and are welded to the door and frame.

**Door** can be provided with a high security, vandal resistant, detention type lock. Doors are manufactured with locks provided by others.

**Finish** is a prime coat suitable for painting.

**Guide Specification**

Provide Elmdor<sup>®</sup> SLA Series, Slammer Access Doors (specify model number and options). Access Door shall be fabricated from 10 gage steel, and frame from 3/16" x 2" x 2" angle steel, welded and with pre-punched mounting holes. Door shall have heavy duty hinges welded to the door and frame. Finish shall be a prime coat suitable for painting.



**MODEL NUMBER AND OPTIONS SELECTION**

**BASE MODEL NUMBER**

SLA Slammer Access Door

**Suffix Options**

- LD Lock Provided by Others
- MAS Masonry Anchor Straps
- MLP Mortise Cylinder Lock (Prep)
- FA12 Folger Adams #10 lock
- FA12KEY Folger Adams key for #10 lock

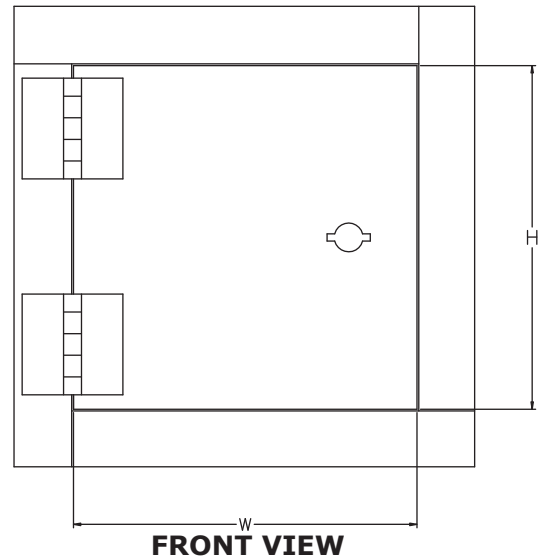
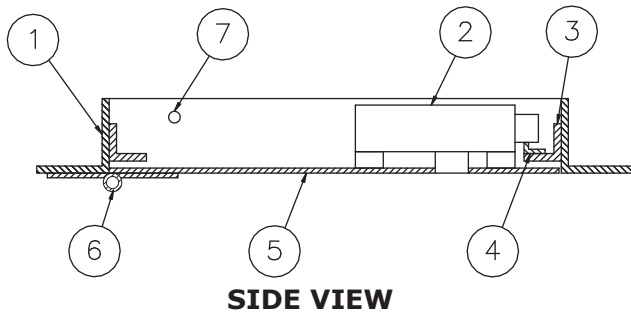
**STANDARD AVAILABLE SIZES**

Special sizes available upon request.

NOMINAL DOOR SIZE (W X H)	WALL OPENING (minimum required)	WEIGHT
SLA 12" x 12"	12-1/2" x 12-1/2"	29 lbs.
SLA 16" x 16"	16-1/2" x 16-1/2"	37 lbs.
SLA 18" x 18"	18-1/2" x 18-1/2"	42 lbs.
SLA 24" x 24"	24-1/2" x 24-1/2"	59 lbs.
SLA 24" x 36"	24-1/2" x 36-1/2"	78.5 lbs.
SLA 24" x 48"	24-1/2" x 48-1/2"	96 lbs.
SLA 36" x 36"	36-1/2" x 36-1/2"	102 lbs.
SLA 36" x 48"	36-1/2" x 48-1/2"	126 lbs.

NOTES:

1. FRAME
2. HEAVY DUTY LOCK
3. DOOR STOP
4. LOCK KEEPER
5. DOOR
6. HEAVY DUTY HINGE
7. MOUNTING HOLES



Dimensions are subject to manufacturer's tolerance of plus or minus 1/4". Elmdor/Stoneman assumes no responsibility for use of void or suspended data. Please visit [www.elmdorstoneman.com](http://www.elmdorstoneman.com) for most current specifications. © Copyright 2009 Elmdor/Stoneman, City of Industry, CA, A Division of Acorn Engineering Company.

SELECTION SUMMARY & APPROVAL FOR MANUFACTURING	
Model Number & Options _____	Quantity _____
Company _____	Date _____
Contact _____	Title _____
Approval for Manufacturing/Signature _____	

**SLA**

*Revised: 09/02/14*