

Lightweight Material

Customizable and Scalable System Footprint

High Strength and Stability

Simplistic Build Snaps Into Place

97% Void Ratio

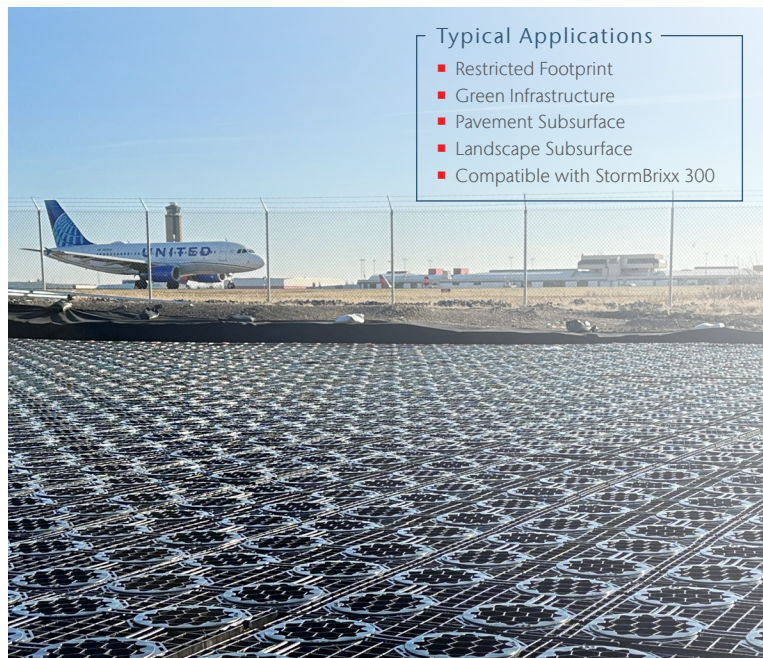
Stackable Modules

## ACO StormBrixx 900 SD

Geocellular Stormwater Storage Product for Detention, Retention, Reuse, & Infiltration Systems

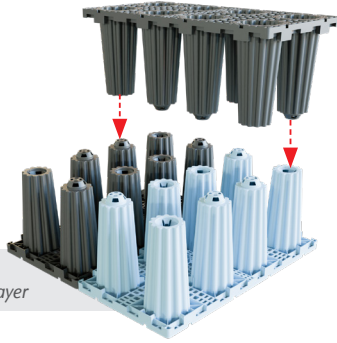
### Highly Efficient, Robust Design

StormBrixx 900 SD system is a high-profile geocellular stormwater management system with an innovative design. Boasting a 97% void ratio, this system reduces excavation and backfill requirements while maximizing water storage efficiency. Its unique pillar configuration and brick-bonding pattern ensure unparalleled stability and ease of maintenance access.



## Versatile and Sustainable

StormBrixx 900 SD is lightweight, stackable, and offers a variety of assembly options to form an open, bonded structure. Each polypropylene component is designed for quick, simple installation, significantly cutting down project timelines.



Brick-bonding to form a StormBrixx Layer

## Durability and Compliance

Manufactured in the USA, every component of StormBrixx 900 SD meets rigorous AASHTO HS-20 load conditions. This system provides a reliable and enduring stormwater management solution, aligning with sustainable infrastructure goals.

- Minimal product footprint for maximum stormwater runoff management
- Design life of 50 years

## Convenient High-Profile Build

The extended height of StormBrixx 900 SD allows a tank to provide high-capacity stormwater storage with minimal product and straightforward inspection and maintenance.

Further benefits of StormBrixx 900 SD's unique design include:

- Easier to install and maintain alongside existing structures and utilities
- Compatible with the shorter StormBrixx 300, allowing you to meet specific height requirements with more precision

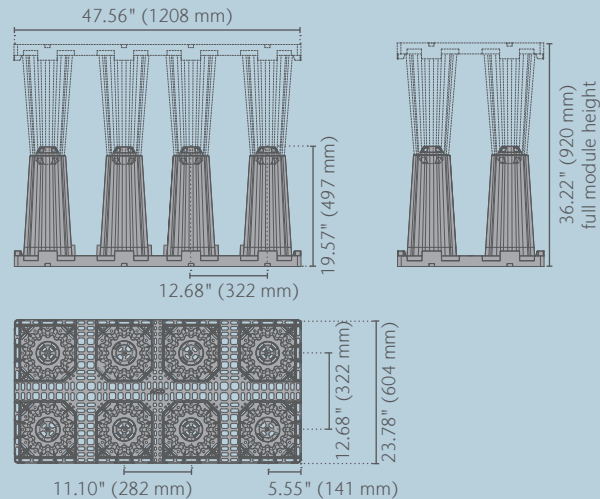
## StormBrixx 900 SD Details

Half-Module Dimensions	47.56" (1208 mm) x 23.78" (604 mm) x 19.57" (497 mm)
Assembled Module Height	36.22" (920 mm)
Half-Module Weight	22.9 lbs (10.4 kg)
Max. Depth to Invert <sup>1</sup>	12.0'
Void Ratio	97%
Full Module Volume <sup>2</sup>	Gross: 23.70 ft <sup>3</sup> (0.67 m <sup>3</sup> ), Net: 22.99 ft <sup>3</sup> (0.65 m <sup>3</sup> )
Number of Full Layers <sup>3</sup>	1–3
Vertical Strength <sup>4</sup>	50.8 psi (350 kPa)
Lateral Strength <sup>4</sup>	10.2 psi (70 kPa)
Max. AASHTO Design Truck	HS-20
Max. Cover Depth <sup>1</sup>	6.50' (2.00 m)
Design Life	50 years

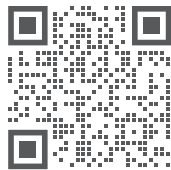
1. Ground improvements may be required. Groundwater is below the tank invert. Contact ACO for more information.
2. A Full Module is equal to two Half-Modules connected vertically (see drawing below).
3. The height of one layer is equal to the height of one Full Module. Please consult ACO for use with StormBrixx 300 modules and/or system heights greater than three layers.
4. Modules only (no backfill or top covers).

## Half-Module 900 SD

part no. 138464



Other StormBrixx 900 SD Parts	Part No.
Side Panel	138463
Top Cover	140213
Layer Connector	314093
Half-Layer Side Panel	138567



### ACO, Inc.

West Sales Office  
825 W. Beechcraft St.  
Casa Grande, AZ 85122  
Tel: (520) 421-9988  
info@acousa.com

Northeast Sales Office  
9470 Pinecone Drive  
Mentor, OH 44060  
Tel: (440) 639-7230

Southeast Sales Office  
481 Munn Rd. Ste 225  
Fort Mill, SC 29715  
Tel: (440) 639-7230

© September 2024 ACO, Inc.  
All reasonable care has been taken in compiling the information in this document. All recommendations and suggestions on the use of ACO products are made without guarantee since the conditions of use are beyond the control of the company. It is the customer's responsibility to ensure that each product is fit for its intended purpose and that the actual conditions of use are suitable. ACO, Inc. reserves the right to change products and specifications without notice.

ACO. we care for water

