

# FT-8080

## FLOOR DOOR, Non Hinged Panel Recessed 1/8" for Vinyl Tile/Carpet

### Application

- Designed for interior and exterior applications that require an access opening that will blend in with the surrounding floor material

### Product Features FT-8080 & FT-8080-1

- To keep the floor material from cracking or chipping within the door panel, the securing screws are located in the flange of the mounting frame
- FT-8080: Recessed 1/8" to accommodate carpeting and vinyl tile
- FT-8080-1: Recessed 1" to accommodate ceramic tile/concrete

### FT-8080 Floor Door Specifications:

**Material:** Aluminum

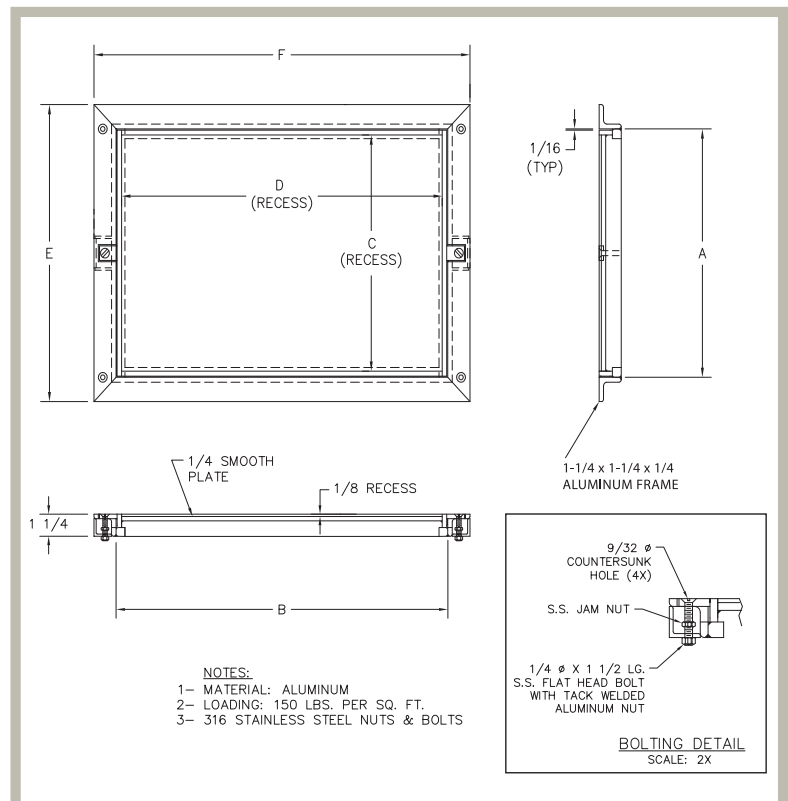
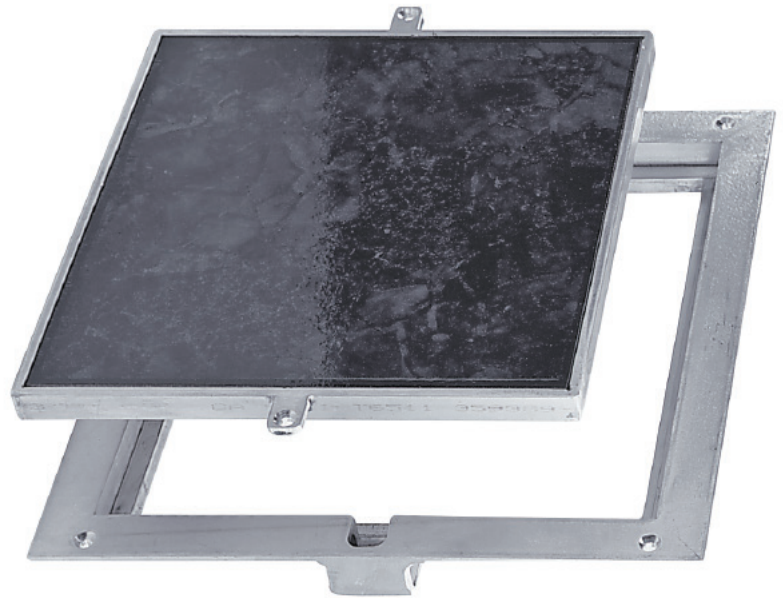
**Door FT-8080:** 1/4" smooth aluminum plate reinforced for live load of 150 lb/sq. ft., recessed 1/8" for carpet//vinyl tile

**Door FT-8080-1:** 1/4" smooth aluminum plate reinforced for live loads of 150 lb/sq.ft. / recessed 1" for ceramic tile/concrete

**Frame:** 1-1/2" x 1-1/4" aluminum angle with mounting holes in top flange

**Standard Latch:** Door panel is secured to frame with 1/4" x 1" flat head screws

**Finish:** Mill finish



### FT-8080 STANDARD SIZES

(other sizes available upon request)

Nominal Door Size W&H		Weight per Door	
inches	mm	lbs.	kg.
8 x 8	203 x 203	6	3.0
12 x 12	305 x 305	9	4.0
18 x 18	457 x 457	18	8.0
24 x 24	610 x 610	36	16.0

For detailed specifications see submittal sheet