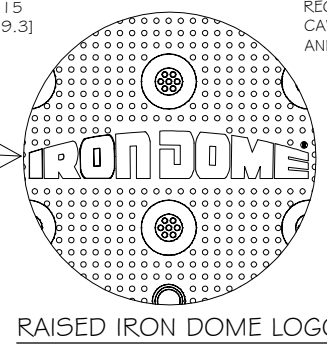
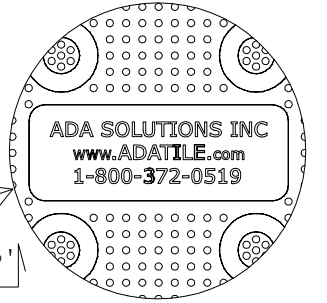


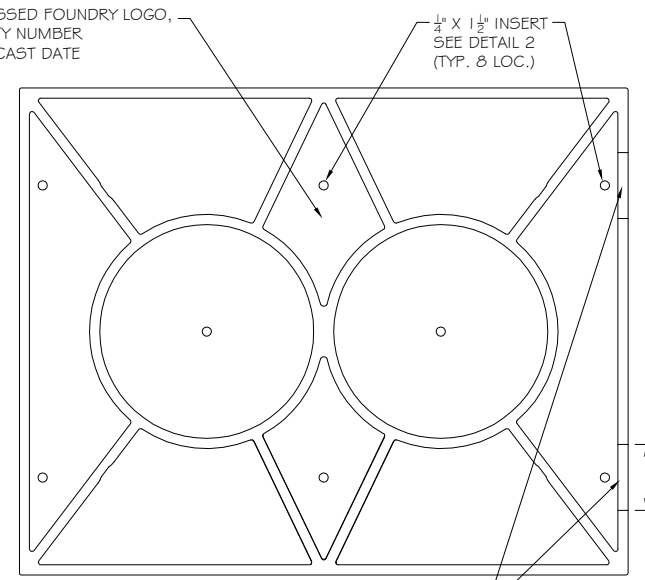
CAST IRON 24X30 TILE TOP VIEW



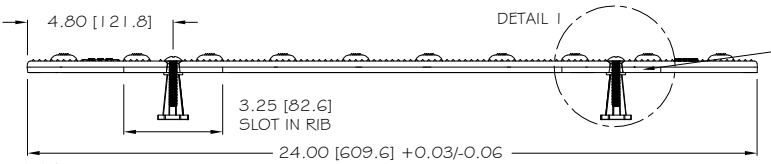
RAISED IRON DOME LOGO



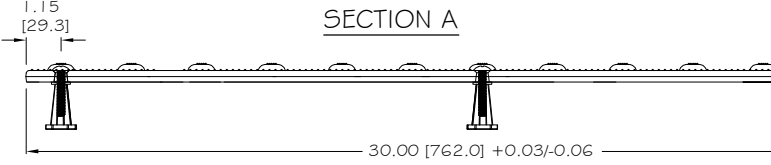
RAISED ADA INFO



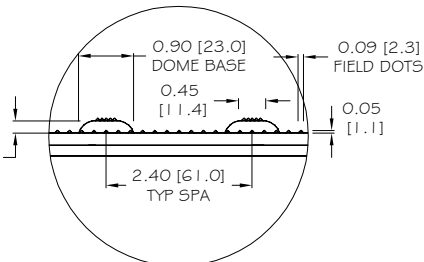
CAST IRON 24X30 TILE BOTTOM VIEW



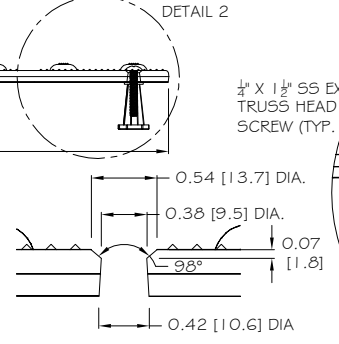
SECTION A



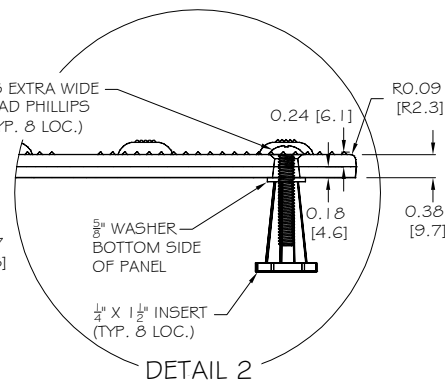
SECTION B



DETAIL 1



INSERT HOLE DETAIL



DETAIL 2

NOTE: PRIMARY DIMENSION INCHES  
mm IN PARENTHESES  
ALL DIMENSIONS NOMINAL

TRADE TACTILE WARNING SURFACE	PART NO. 24X30 IRON DOME
MATERIAL CAST IRON	

**PROJECT**  
**iron dome**<sup>®</sup>  
 REPLACEABLE TACTILE  
 WARNING SURFACE UNIT  
 8-BOLT LOCATIONS  
 PART SIZE 24" (610mm) X 30" (762mm)  
 PLANS AND DETAILS

DRAWING NO. ADA-REP_CI2430_TH	REV 3	DATE 07-23-18
----------------------------------	----------	------------------



WWW.ADATILE.COM  
 PHONE: (800)372-0519  
 EMAIL: INFO@ADATILE.COM

- NOTES:
- 1) CASTING TOLERANCES: +/- 0.03" UNLESS OTHERWISE SPECIFIED  
1/8" MAXIMUM WARP FROM CORNER TO CORNER
  - 2) MATERIAL: METAL SPECIFICATION ASTM A159 G3000 CAST IRON
  - 3) UNSPECIFIED FILLET R=0.04" MAXIMUM