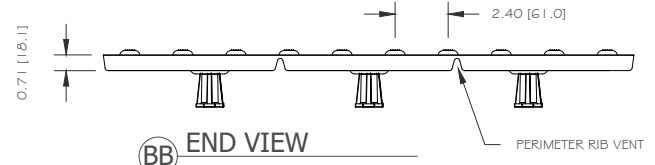
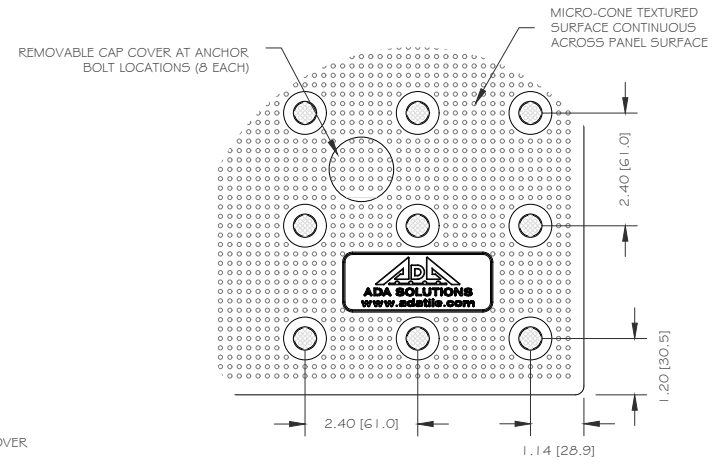


TOP VIEW

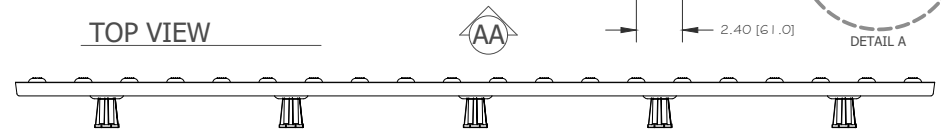
ANCHOR BOLT LOCATION (SHOWN WITHOUT CAP COVER INSTALLED)



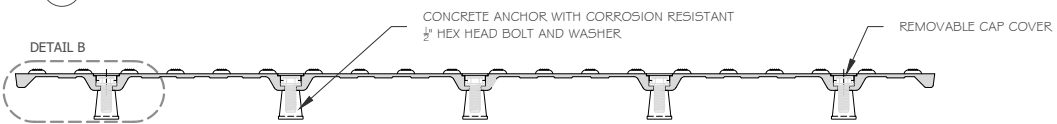
BB END VIEW



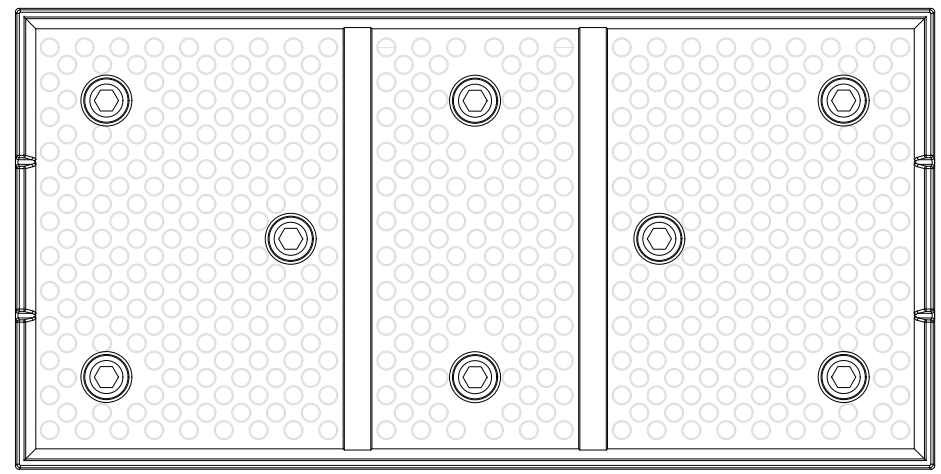
A DETAIL



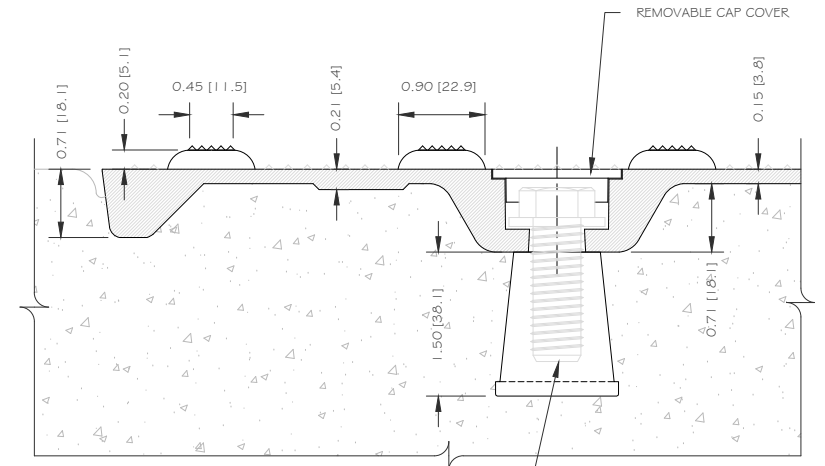
AA SIDE VIEW



CC SECTION



BOTTOM VIEW



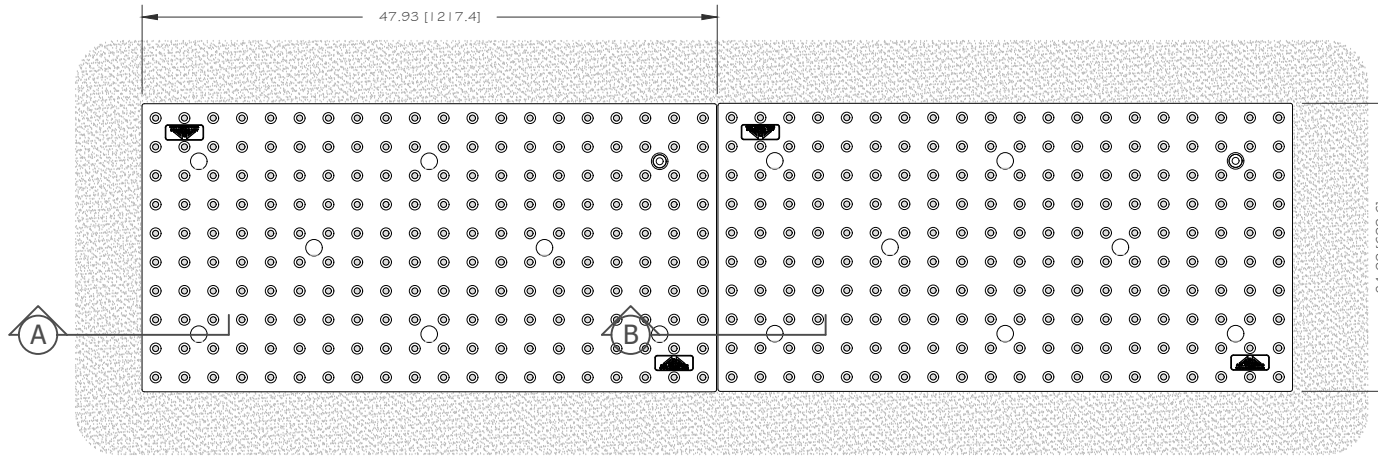
B DETAIL - INSTALLED IN CONCRETE

DETECTABLE WARNING SURFACE PANEL  
**Cast-In-Place Replaceable 24" x 48"**  
 PART SIZE: 24" (609.6 MM) X 47.875" (1,216.0 MM)  
 2.40" (60.96 MM) IN-LINE TRUNCATED DOME SPACING

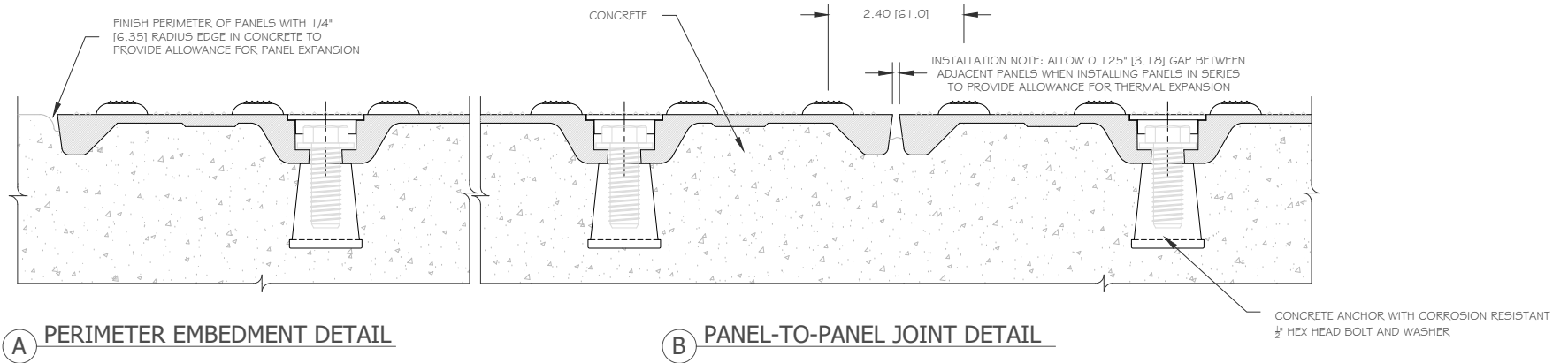
DIVISION  
 TACTILE WALKING SURFACE INDICATORS  
 MATERIAL  
 FIBERGLASS REINFORCED POLYMER COMPOSITE SMC  
 DRAWING NUMBER  
 ADA-REP2-2448 Page 1 of 2  
 DATE  
 2023-08-25  
 DRAWING UNITS  
 INCHES [MM]

WEBSITE  
 ADATILE.COM  
 PHONE  
 1-800-372-0519  
 EMAIL  
 INFO@ADATILE.COM





TOP VIEW - MULTIPLE PANEL INSTALLATION



DETECTABLE WARNING SURFACE PANEL  
**Cast-In-Place Replaceable 24" x 48"**  
 PART SIZE: 24" (609.6 MM) X 47.875" (1,216.0 MM)  
 2.40" (60.96 MM) IN-LINE TRUNCATED DOME SPACING

DIVISION  
TACTILE WALKING SURFACE INDICATORS

MATERIAL  
FIBERGLASS REINFORCED POLYMER COMPOSITE SMC

DRAWING NUMBER  
ADA-REP2-2448 Page 2 of 2

DATE  
2023-08-25

DRAWING UNITS  
INCHES [MM]

WEBSITE  
ADATILE.COM

PHONE  
1-800-372-0519

EMAIL  
INFO@ADATILE.COM

