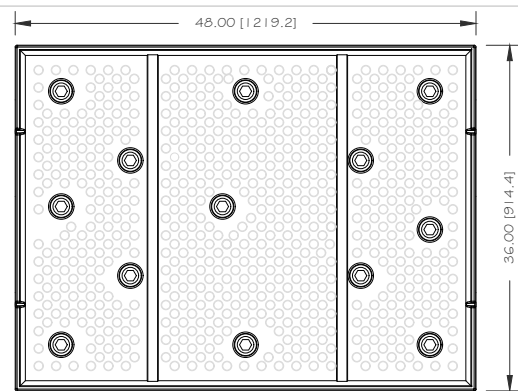


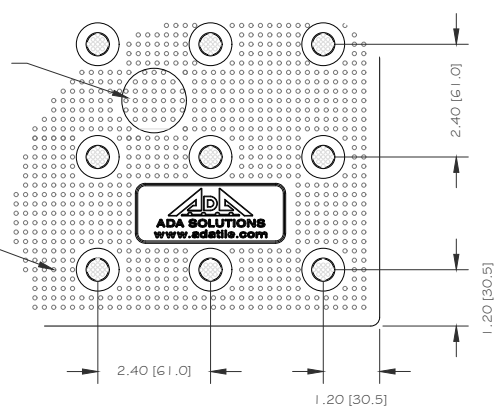
TOP VIEW

AA

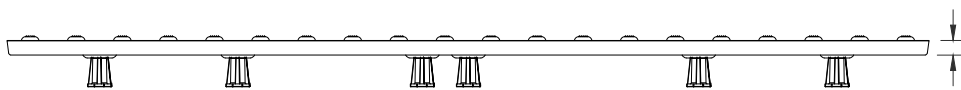
DETAIL A



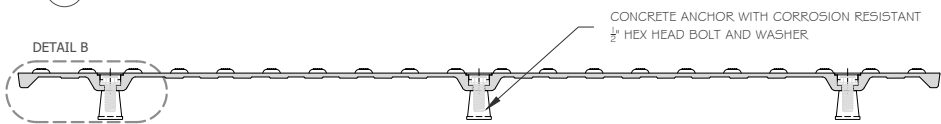
BOTTOM VIEW



A DETAIL

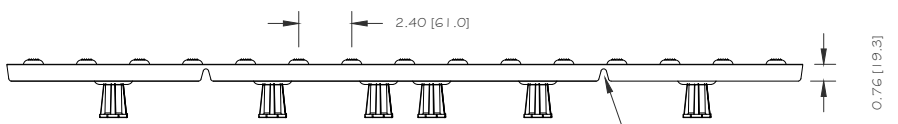


AA SIDE VIEW



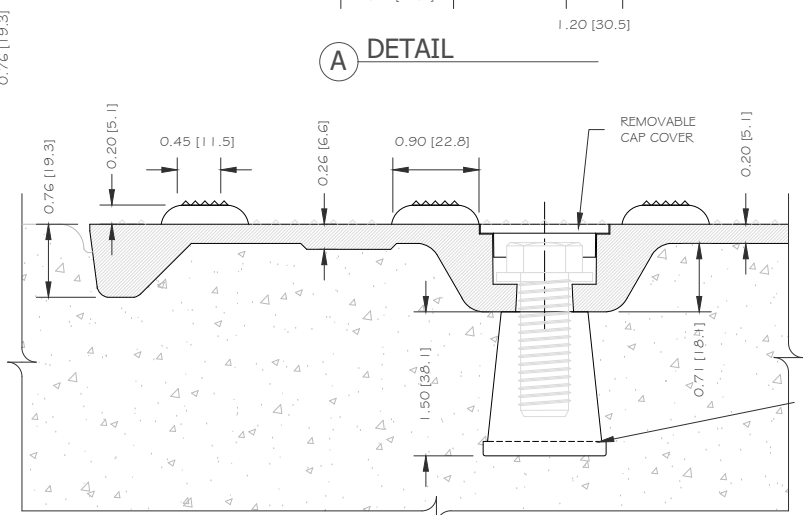
CC SECTION

DETAIL B



BB END VIEW

PERIMETER RIB VENT



B DETAIL - INSTALLED IN CONCRETE

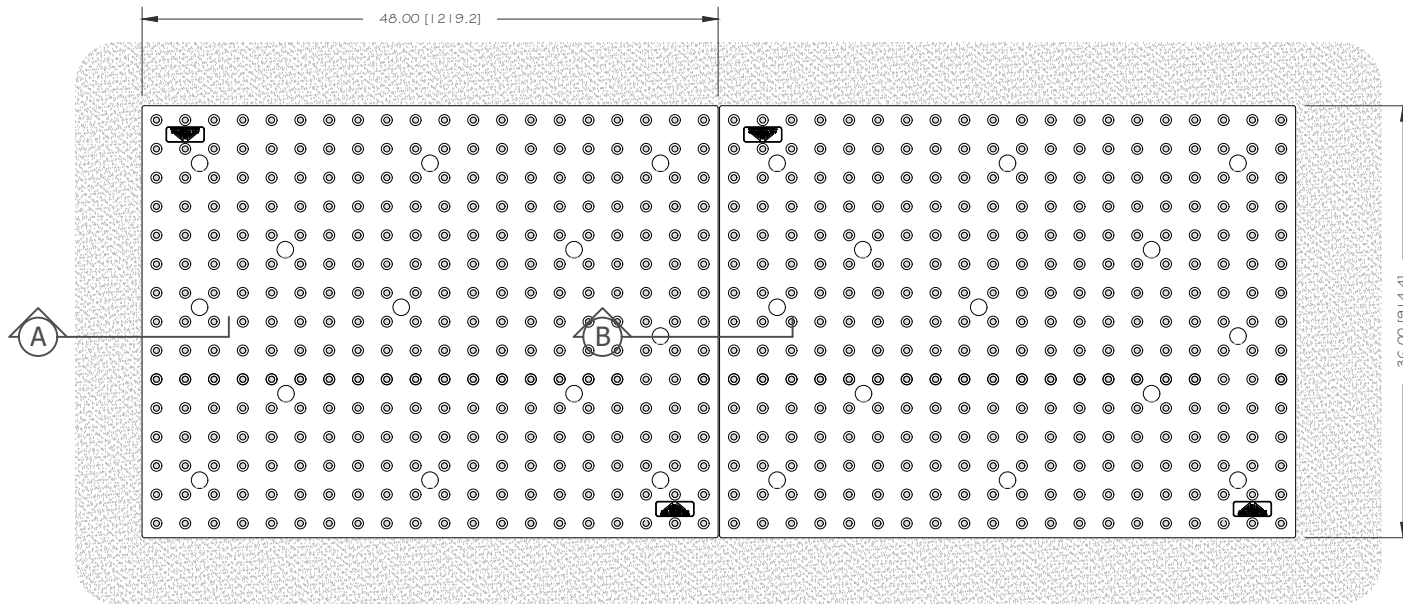
CONCRETE ANCHOR WITH CORROSION RESISTANT 1/2\"/>

DETECTABLE WARNING SURFACE PANEL
Cast-In-Place Replaceable 36" x 48"
 PART SIZE: 36" (914.4 MM) X 48" (1,219.2 MM)
 2.40" (60.96 MM) IN-LINE TRUNCATED DOME SPACING

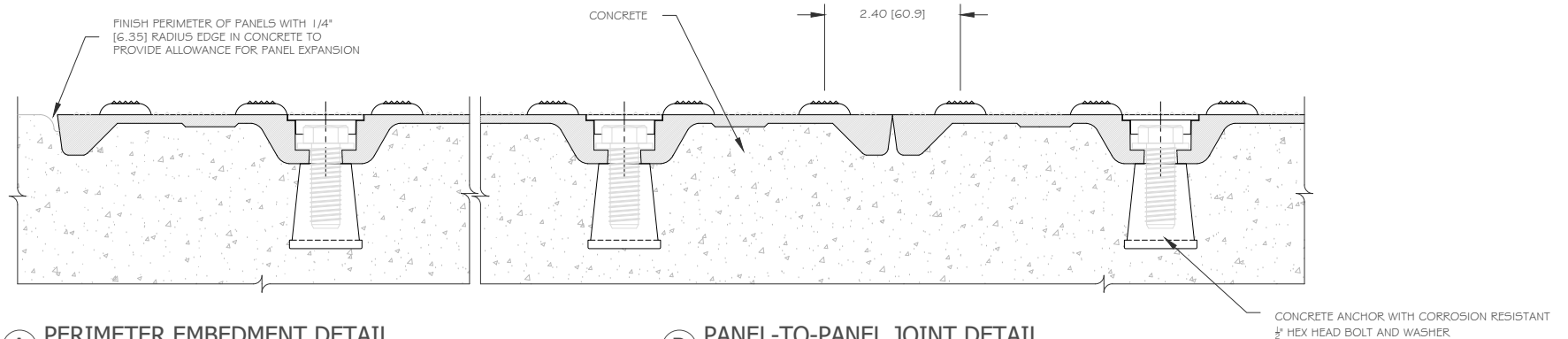
DIVISION
 TACTILE WALKING SURFACE INDICATORS
 MATERIAL
 FIBERGLASS REINFORCED POLYMER COMPOSITE SMC
 DRAWING NUMBER
 ADA-REP2-3648 Page 1 of 2
 DATE
 2023-08-24
 DRAWING UNITS
 INCHES [MM]

WEBSITE
 ADATILE.COM
 PHONE
 1-800-372-0519
 EMAIL
 INFO@ADATILE.COM





TOP VIEW - MULTIPLE PANEL INSTALLATION



A PERIMETER EMBEDMENT DETAIL

B PANEL-TO-PANEL JOINT DETAIL

DETECTABLE WARNING SURFACE PANEL
Cast-In-Place Replaceable 36" x 48"
 PART SIZE: 36" (914.4 MM) X 48" (1,219.2 MM)
 2.40" (60.96 MM) IN-LINE TRUNCATED DOME SPACING

DIVISION
 TACTILE WALKING SURFACE INDICATORS

MATERIAL
 FIBERGLASS REINFORCED POLYMER COMPOSITE SMC

DRAWING NUMBER
 ADA-REP2-3648 Page 2 of 2

DATE
 2023-08-24

DRAWING UNITS
 INCHES [MM]

WEBSITE
 ADATILE.COM

PHONE
 1-800-372-0519

EMAIL
 INFO@ADATILE.COM

