

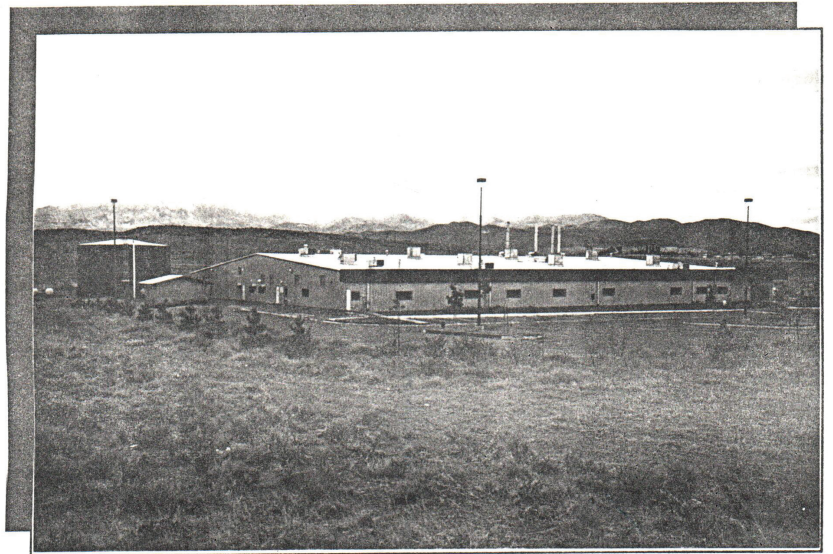
# AERVOE INDUSTRIES

**Catalog 1  
2023-2024**



**Industrial, Maintenance and Construction Chemical Products**





Original Aervoe Facility in Gardnerville, NV

As I look back over the last 50 years, I am reminded of how this company began in 1972 in Santa Clara, California, with what was originally named Aervoe Chemical Company. We took two letters from each partner's name the word Aervoe was born.



Perhaps we are best known for inverted marking paint. We should be we invented it! In 1974 I witnessed an accident investigation involving a major utility company. One of their employees was killed by a vehicle while marking underground utilities with standard upright spray paint. There had to be a safer way, so we worked with their Safety Engineers to achieve a true corrective action. We reformulated the standard spray paint into an inverted industrial formula that also had better hide and visibility on a variety of surfaces and, most importantly, it could be applied by hand or using a new application stick which allowed the employee to stand upright in full view of traffic. It is a much safer solution.



Current Facility in Gardnerville, NV

As you can see from the selection of products in this catalog, we are much more than marking paint! In fact, over 90% of this catalog includes industrial coatings and MRO chemical products. We are one of the leading manufacturers in this category and way ahead of the curve in developing safer products for our customers and the environment. We removed the most dangerous cancer-causing ingredients years before the competition and will continue to as a part of our DNA.

In 1989 we moved operations to a 300-acre location in Gardnerville, Nevada. Fifteen dedicated employees moved with us, and together we grew through diversification and acquisitions including Crown, Zynolyte, and Max Burton.

Part of our diversification effort led us in unique directions with products such as self-powered flashlights, solar power storage devices, LED safety flares, and a non-pressurized/propellant-free aerosol dispensing system, many with patents. Our development team stays focused and continually interested in developing new items.



David A. Williams  
C.E.O.

There are many people that Mark and I want to thank for being a part of Aervoe's success – our employees, suppliers, and of course, those that are most important, our customers!

Change is constant, and our mission is to provide quality products at a competitive price and give each user the "Professional's Choice".

Thank You.



Mark D. Williams  
President





# TABLE OF CONTENTS

**Paints and Coatings ..... 4**  
Choice of colors in cost effective solutions for indoor and outdoor applications.

**Custom Color Matches..... 9**

**Galvanized and Stainless Steel Coatings ..... 10**  
Paints that provide the ultimate in protection against rust and corrosion as a primer or final coat.

**Marking Products..... 13**  
A complete line of inverted marking and coating paints and applicators.

**Striping Paint and Applicators ..... 16**  
Specialty products for striping safety aisles and parking lots with crisp, long-lasting lines.

**M.R.O. Products ..... 18**  
Necessary cleaners, lubricants, and other protective coatings for Maintenance, Repair, Operations.

**Mold Specialties ..... 27**  
High quality mold specialties and release agents for molding operations.

**Fleet/Utility Service..... 29**  
Outside plant maintenance products for utility and municipal applications.

**Shipping Essentials..... 32**  
Stencil and cover-up inks, and industrial-strength adhesives for shipping and receiving departments.

**Miscellaneous ..... 33**

**Delivery Systems ..... 35**  
Applicators that make the application of Aervoe products economical and effective.

**Other Aervoe Markets ..... 36**

**Merchandising ..... 37**  
Retail racks and counter shelves with header cards to display the entire Aervoe product line.

**Trade References ..... 38**  
A succinct dictionary of industry terms and regulations can help you through the alphabetical clutter of purchasing.

**Numerical and UPC Product Index..... 40**  
Every Aervoe product and container has its own UPC number and they're all listed here.

**Customer Support Services ..... 43**

**User Guides**

Aerosol Paints and Coatings.....	12
APWA One-Call.....	15
Lubricants, Greases and Penetrants.....	21
Anti-Seize .....	22
Cleaners / Degreasers.....	24
Cutting & Fabricating.....	26
Mold Releases.....	28
Fleet / Utility Service .....	29

**THE  
PROFESSIONAL'S  
CHOICE**



# PAINTS AND COATINGS

AerVOE Paints and Coatings provide quality, cost-effective solutions for every application. Each product offers a wide choice of colors and is formulated for industrial and institutional applications. High gloss, high-hide formulas provide superior performance, both indoors and outdoors, and insure uniform coverage in one application. Rust Proof, Supreme Color Shield, and Engine Enamel lines include OSHA safety, HVAC, and selected O.E.M. touch up colors. An excellent line of specialty coatings is also available for unique surface applications.

## RUST PROOF ANY-WAY PAINT

A high quality industrial maintenance enamel coating formulated for light to moderate interior/exterior industrial exposures. Offers lasting protection against corrosion, light abrasion, weathering, and mild chemical fumes. Sprays in any direction and adheres to any surface (even vinyl and plastic).

**CAN SIZE (NET)** 16-ounce Aerosol (12 oz)    **WEIGHT** 14 lbs.    **CASE PACK** 12 Cans

### COLOR SELECTION

157 J.D. Green	307 Safety White	344 Satin Black
167 Caterpillar Yellow (OLD)	308 Brite Red	348 Meter Green
168 Caterpillar Yellow (NEW)	312 Flat Black	349 Meter Gray (ANSI-49)
178 School Bus Yellow	313 Flat White	361 Light Gray (ANSI-61)
300 Safety Purple	314 Brown	
301 Safety Red	317 Tan	<b>METALLICS</b>
302 Safety Yellow	318 Light Blue	309 Aluminum
303 Safety Blue	319 Royal Blue	310 Silver (11 oz)
304 Safety Green	320 Forest Green	311 Gold
305 Safety Orange	333 Dark Gray (ANSI-33)	
306 Safety Black	342 Semi Flat Black	



## DIRECT TO METAL RUST PROOFING PAINT Solvent- or Water-Based

Direct To Metal (DTM) solvent-based and water-based formulations withstand corrosion and exposure from mild to moderate conditions while maintaining high gloss levels. Color selections include **OSHA** safety, **HVAC**, commercial and selected factory equipment touch up colors. Withstands temperatures up to 300°F (149°C).

- Water-Based DTM may be used as a top coat on galvanized surfaces
- Solvent-Based DTM is unacceptable as a top coat over galvanized surfaces

### SOLVENT-BASED COLOR SELECTION

**CAN SIZE (NET)**    **WEIGHT**    **CASE PACK**  
 Quart Can \*    12 lbs.    4 Quarts  
 Gallon Can    23 lbs.    2 Gallons  
 5-Gallon Pail    49 lbs.    1 Pail  
 55-Gallon Drum (50 gal.)    478 lbs.    1 Drum

301 Safety Red	305 Safety Orange	312 Flat Black
302 Safety Yellow	306 Safety Black	349 Meter Gray (ANSI-49)*
303 Safety Blue	307 Safety White	361 Light Gray (ANSI-61)
304 Safety Green	308 Brite Red	

### WATER-BASED COLOR SELECTION

**CAN SIZE (NET)**    **WEIGHT**    **CASE PACK**  
 Gallon Can    23 lbs.    2 Gallons  
 5-Gallon Pail    52 lbs.    1 Pail  
 55-Gallon Drum (50 gal.)    508 lbs.    1 Drum

3010G Safety Red
3020G Safety Yellow
3049G Meter Gray (ANSI-49)

**OSHA Colors** - The Occupational Safety and Health Act (OSHA) stipulates that industrial plants provide color coded safety equipment and hazard areas. The following list identifies the OSHA-designated colors and their meaning.

Application	Application Color	AerVOE Product
Radiation hazard	OSHA Purple	300
Danger, stop, or location of fire protection equipment	OSHA Red	301 3010
Caution and physical hazards	OSHA Yellow	302 3020
Equipment being repaired. Caution against starting or moving	OSHA Blue	303
Location of safety equipment other than fire	OSHA Green	304
Dangerous parts of machinery or energized equipment	OSHA Orange	305
Traffic and housekeeping	OSHA Black	306
Traffic and housekeeping	OSHA White	307

**HVAC Colors** - Color designations are currently used by DuPont for its refrigerants. Although refrigerant manufacturers make a concerted effort to select colors to differentiate refrigerant types, color guidelines are not a substitute for reading cylinder labels and markings. AerVOE suggests the following refrigerant colors be used for coding.

Refrigerant	Marking Color	AerVOE Product
R502	Purple	300
R22	Light Green	304
R404A	Orange	305
R409A	Tan	317
R134A	Light Blue	318



## SUPREME COLOR SHIELD™ PAINT 5049 Meter Gray (ANSI-49)

Designed to provide superior appearance and color retention under harsh environments. Sprays in any direction and performs well at temperatures up to 300°F (149°C). Ideal as a finish coat for metal.

CAN SIZE (NET)	WEIGHT	CASE PACK
20-ounce Aerosol (15 oz.)	16 lbs.	12 Cans



## SPEED E-ENAMEL™

A high quality, fast-dry paint that dries to the touch in 15 minutes and prevents rust. A smooth, professional finish every time. Use on metal, wood, and plastic. For best results, use with Zynolyte Multipurpose Primer.

CAN SIZE (NET)	WEIGHT	CASE PACK
16-ounce Aerosol (11 oz.)	14 lbs.	12 Cans



### COLOR SELECTION

Z275 Semi-Gloss White	Z487 Flat Black
Z277 Semi-Gloss Black	Z489 Light Gray
Z297 Persimmon	Z506 Antique White
Z298 Orange	Z516 Purple
Z307 Acrylic Clear	Z517 Rich Red
Z357 Chocolate Brown	Z518 Pink
Z377 Flat White	Z519 Burgundy
Z387 Gloss Black	Z525 Kelly Green
Z397 Gloss White	Z813 Red
Z467 Lemon Yellow	
Z468 Medium Gray	<b>METALLICS</b>
Z469 Hunter Green	Z308 Silver
Z470 Bermuda Blue	Z317 Aluminum
Z471 Royal Blue	Z407 Gold
Z482 Almond	

## ZYNOLYTE® MULTIPURPOSE PRIMER

High quality, non-lifting primer coatings for use on surfaces where good adhesion is needed before top/finish coat. Fast-drying; dries to touch in 10 minutes

CAN SIZE (NET)	WEIGHT	CASE PACK
16-ounce Aerosol (11 oz.)	14 lbs.	12 Cans
Gallon Can *	23 lbs.	2 Gallons
5-Gallon Pail	62 lbs.	1 Pail
55-Gallon Drum (50 gal.)	615 lbs.	1 Drum

### COLOR SELECTION

Z8072 Gray*	Z8076 White
Z8074 Red Oxide	Z8078 Black



## ZYNOLYTE® SANDABLE SPRAY PRIMER

This durable automotive primer is best for auto body and parts touch up, either sandable or non-sandable.

CAN SIZE (NET)	WEIGHT	CASE PACK
16-ounce Aerosol (11 oz.)	14 lbs.	12 Cans

### COLOR SELECTION

Z1704 Gray
Z1706 Red Oxide

### MILD ENVIRONMENTS

Outdoor weathering, mild industrial fumes and normal humidity with mold and mildew conditions.

### MODERATE ENVIRONMENTS

Frequent fumes and spills of mild chemicals, occasional product spills, occasional chemical cleaning. Intermittent high humidity, moisture, mold, and mildew conditions.

### SEVERE ENVIRONMENTS

Frequent fumes and spills of strong chemicals (acids, alkalis, and solvents), high humidity and moisture conditions. Frequent product spills and frequent chemical cleaning.

## GLOSS COMPARISON CHART



## ZYNOLYTE® HI-TEMP PAINT

A flame and heat-resistant coating uniquely formulated to produce a lasting finish that is resistant to temperatures up to 1200°F (649°C). Designed for use on metal surfaces where excessive heat will cause regular paint to blister and crack. Once cured, will not chip off, peel away, discolor or chalk.

<b>CAN SIZE (NET)</b> 16-ounce Aerosol (11 oz.)	<b>WEIGHT</b> 14 lbs.	<b>CASE PACK</b> 12 Cans
--	--------------------------	-----------------------------

### COLOR SELECTION

- Z630 Aluminum
- Z635 Black
- Z642 Machinery Gray
- Z645 White



## ZYNOLYTE® FLUORESCENT COATING

Made up of fluorescent particles that deliver color four times brighter than other spray paints. Apply over a white base coat for optimum brightness. Glows under black light.

<b>CAN SIZE (NET)</b> 16-ounce Aerosol (11 oz.)	<b>WEIGHT</b> 14 lbs.	<b>CASE PACK</b> 12 Cans
--	--------------------------	-----------------------------

### COLOR SELECTION

- Z1416 Green
- Z1417 Lemon Yellow
- Z1418 Red
- Z1419 Red-Orange
- Z1421 Hot Pink
- Z1422 Orange



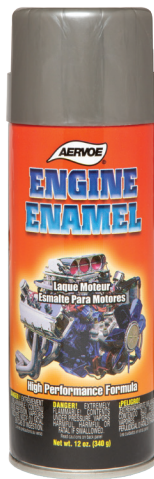
## ENGINE ENAMEL

This fast drying, heat resistant paint is specially formulated to keep engine surfaces from pitting and rusting while maintaining O.E.M. color standards and gloss. Withstands temperatures up to 500°F (260°C).

<b>CAN SIZE (NET)</b> 16-ounce Aerosol (12 oz.)	<b>WEIGHT</b> 14 lbs.	<b>CASE PACK</b> 12 Cans
--	--------------------------	-----------------------------

### COLOR SELECTION

- |                      |                      |
|----------------------|----------------------|
| 510 Universal Clear  | 560 Ford Blue        |
| 511 Universal White  | 561 Chevrolet Blue   |
| 512 Flat Black       | 562 G.M. Blue        |
| 513 Satin Black      | 566 Ford-Merc. Blue  |
| 514 Gloss Black      | 568 Chrysler Blue    |
| 520 Chevrolet Orange | 570 Universal Silver |
| 530 Cadillac Gold    | 575 Dull Aluminum    |
| 540 Alpine Green     | 580 Cummins Beige    |
| 550 Ford Red         | 582 Cast Iron Gray   |
| 551 Ford Gray        | 583 Steel Blast Gray |



## CLEAR ACRYLIC COATINGS

Made with non-yellowing, acrylic resins that provide superior gloss finish retention over painted and non-painted surfaces.

PROD # / CAN SIZE (NET)	WEIGHT	CASE PACK
117 Clear Acrylic, Gloss 16-ounce Aerosol (12 oz.)	14 lbs.	12 Cans
120 Clear Acrylic, Matte 16-ounce Aerosol (12 oz.)	14 lbs.	12 Cans
6004 Kleer Kote 20-ounce Aerosol (15 oz.)	16 lbs.	12 Cans





## 156 REBAR GREEN EPOXY COATING

A high performance, single system epoxy coating specifically designed to protect rebar from corrosion and other damage. Use to touch up and repair the original factory coating or bare rebar. May also be used on other approved steel surfaces. Performs at temperatures up to 300°F (149°C). Meets ASTM D3963 and D3963M-01 specifications.

**CAN SIZE (NET)** 16-ounce Aerosol (12 oz.)    **WEIGHT** 14 lbs.    **CASE PACK** 12 Cans



## MINE MARKING PAINT

An upright marking paint that is a highly pigmented and durable. Designed specifically for overhead marking. Apply by hand or using #1244 Spot Marker or #1245 Marking Stick.

**CAN SIZE (NET)** 20-ounce Aerosol (17 oz.)    **WEIGHT** 18 lbs.    **CASE PACK** 12 Can

### COLOR SELECTION

196 Fl. Red  
197 Fl. Orange



## ROOF ACCESSORY & TRIM PAINT

Formulated for exterior use on roofing accessories to provide long term protection against rust, corrosion, and discoloration on roofing accessory materials. Matched to O.E.M. color standards.

**CAN SIZE (NET)** 16-ounce Aerosol (12 oz.)    **WEIGHT** 14 lbs.    **CASE PACK** 12 Cans

### COLOR SELECTION

#### Composition Shingles

1601 Cedar	1606 Birchwood	1609 Rustic Black
1603 Rustic Brown	1607 Smoke	1612 Dark Brown
1604 Driftwood	1608 Slate Gray	

#### Ceramic Tile

1613 Terra Cotta  
1616 Adobe

#### Metal Roof

1625 Bone White  
1626 Sierra Tan



## 1805 BLACK RUBBERIZED LEAK REPAIR

A flexible rubber coating that dries quick to seal water leaks and cracks. It penetrates deep into the surface to assure a firm, tough bond. It has excellent adhesion to concrete, wood, felt, gypsum, plastic, glass and metal. Withstands normal hydrostatic pressure.

**CAN SIZE (NET)** 20-ounce Aerosol (15 oz.)    **WEIGHT** 17 lbs.    **CASE PACK** 12 Cans



## ANODIZED METAL & TRIM PAINT

Fast drying, specialty pigmented coating to touch up anodized and painted building components and match 3 of the most commonly used OEM colors.

**CAN SIZE (NET)** 16-ounce Aerosol (12 oz.)    **WEIGHT** 13 lbs.    **CASE PACK** 12 Cans

### COLOR SELECTION

1850 California Black Bronze  
1852 Dark Bronze  
1857 Bronze



## 1690 BLACK ASPHALT ROOF PRIMER

A quick drying, asphalt-based material designed for priming prior to hot-mopped or cold-applied asphalt coatings, roof cements, and asphalt-based roof and flooring adhesives.

**CAN SIZE (NET)** 20-ounce Aerosol (15 oz.)    **WEIGHT** 17 lbs.    **CASE PACK** 12 Cans



## WET COAT® TREE MARKING PAINT

This specially formulated paint mixes with the water from wet wood and penetrates deep into pores of lumber for high visibility in otherwise tough conditions. Includes a red tip for wet conditions and a white tip for dry conditions.

CAN SIZE (NET)	WEIGHT	CASE PACK
16-ounce Aerosol (12 oz.)	13 lbs.	12 Cans

### COLOR SELECTION

694 White	697 Red
695 Blue	698 Orange



## TREE MARKING PAINT

Specially formulated, long lasting, lead-free, solvent-based paint that meets all marking requirements of the forestry industry.

CAN SIZE (NET)	WEIGHT	CASE PACK
16-ounce Aerosol (12 oz.)	13 lbs.	12 Cans

### COLOR SELECTION

610 Red	650 Blue	690 Fl. Red
620 Orange	660 Black	691 Fl. Pink
630 Yellow	670 White	692 Fl. Orange-Red
645 Dark Green	688 Fl. Green	

## PROFESSIONAL CHOICE TREE MARKING PAINT

Superior coverage and adhesion when marking trees or cut wood. Has excellent wet surface adhesion, and sprays in any direction.

CAN SIZE (NET)	WEIGHT	CASE PACK
20-ounce Aerosol (15 oz.) Gallon Can*	16 lbs. 23 lbs.	12 Cans 2 Cans

### COLOR SELECTION

6310 Red	6491 Fl. Pink * (not available in aerosol)
6330 Yellow	6492 Fl. Orange *
6350 Light Blue	6493 Fl. Yellow *
6370 White	6495 Fl. Blue *
6490 Fl. Red *	

\* available in Gallons



## PROFESSIONAL CHOICE FOREST BOUNDARY MARKING PAINT

Mark forest or property boundaries with this durable and long lasting tree marking paint. It will adhere to wet surfaces. The adjustable fan spray deposits up to an 8"-wide band in either a vertical or horizontal mark. Up to 8-year durability and visibility.

CAN SIZE (NET)	WEIGHT	CASE PACK
20-ounce Aerosol (15 oz.) Quart Can Gallon Can	16 lbs. 27 lbs. 23 lbs.	12 Cans 12 Cans 2 Cans

### COLOR SELECTION

5310 Red	5355 Dark Blue
5320 Orange	5380 Purple
5330 Yellow	



## 6301 DUZ ALL SPRAY GUN

Metal spray gun that attaches to Professional Choice Forest Boundary Paint quart cans.

WEIGHT	CASE PACK
2 lbs.	1

## 240 SPRAY CAN POUCH

Nylon pouch holds 1 20-oz. aerosol can. A belt slips through a nylon strap for easy access.

WEIGHT	CASE PACK
1 lb.	1

## 243 TREE MARKING PAINT QUART CAN POUCH

Nylon pouch holds 1 quart can with Duz-All Spray Gun attached. A belt slips through a nylon strap for easy access.

WEIGHT	CASE PACK
1 lb.	1



Shown with Duz All Spray Gun



# Meet your customer's needs for custom color matching so they can do their job.



- **Farm Equipment Touch Up**
- **Automotive Finishes**
- **Public Works Maintenance**
- **Original Equipment Color Matches**
- **Metal Corrosion and Electrical Insulation**

Small batch aerosol fills start with 2400 cans or 100 gallons per color.

1. We color match to your specification and supply all materials and labor.

— OR —

2. You supply the concentrate and we provide the filling service and all packaging components.

Aervoe supplies a generic label imprinted with your name, color, and part number. Customer may provide custom film labels.



For full program details, contact Customer Service at 800-227-0196.

# GALVANIZED AND STEEL COATINGS

Aerove galvanize coatings and stainless steel paints provide the ultimate in long term protection against rust and corrosion available today. They are acceptable as a coating in federally inspected meat and poultry plants for application to structural surfaces, or any surface where incidental food contact may occur. Crown galvanize coatings have been the industry benchmark for over 50 years... products that "sacrifice" the coating to chemically protect steel.



## 7007 COLD GALVANIZE COATING 93% ZINC RICH

The leader in the industry in corrosion prevention. Can be easily sprayed, brushed, or dipped onto any metal surface. Its zinc-rich formula is designed for permanent protection.

- 93% pure zinc in dry film
- Meets performance requirements of MIL-P-46105(MR), MIL-P-21035B, and DOD-P-21035A
- Withstands 2000 hours of 5% salt spray testing (ASTM B-117)
- Light gray, matte finish
- Zinc sacrifices itself to protect the base metal surface
- Provides protection equal to or better than hot-dipped galvanizing
- Outstanding weld-through primer

**Uses:** Industrial type applications such as aviation, marine, manufacturing, etc.



## 7008 BRITE GALVANIZE COATING 65% ZINC RICH

A restorative coating fortified with zinc for preventing rust and corrosion on ferrous metal surfaces with one coat application.

- A glistening coating with 65% pure zinc in dry film
- Stops rust and corrosion on any iron or steel surface for protection equal to or better than hot-dipped galvanizing
- Restores galvanized surfaces to the bright look of hot-dipped galvanizing
- Meets performance requirements of ASTM A-780-93A
- Withstands 500 hours 5% salt spray (ASTM B-117)

**Uses:** Repair of welds, handrails, rims, guardrails, metal chain fences, pipes, corrugated metal buildings, or anywhere the bright look of hot-dipped surfaces is desired.

**CAN SIZE (NET)**  
16-oz. Aerosol (13 oz.)  
Quart Can  
Gallon Can

**WEIGHT**  
14 lbs.  
26 lbs.  
25 lbs.

**CASE PACK**  
12 Cans  
4 Quarts  
1 Gallon

**CAN SIZE (NET)**  
16-oz. Aerosol (13 oz.)  
Quart Can  
Gallon Can

**WEIGHT**  
14 lbs.  
13 lbs.  
13 lbs.

**CASE PACK**  
12 Cans  
4 Quarts  
1 Gallon

## LOW VOC FORMULAS MEET CALIFORNIA, CONNECTICUT AND OTHER STATE REQUIREMENTS.

### 7007VG LOW VOC COLD GALVANIZE COATING 93% ZINC RICH

A low VOC version of our Cold Galvanize Coating with a VOC content of less than 100 g/l. Contains 97% pure zinc that yields 93% zinc in a dry film.

- Meets multiple performance requirements of ASTM, MIL, and DOD specifications (see product data sheet for details)
- Performs at temperatures up to 150°F (65°C)
- Withstands up to 2,000 hours salt spray exposure

### 7008VG LOW VOC BRITE GALVANIZE 65% ZINC RICH

A low VOC version of our Brite Galvanize Coating with a VOC content of less than 250 g/l.

- Meets performance requirements of ASTM A-780-93A
- Withstands 500 hours 5% salt spray (ASTM B-117)

**CAN SIZE (NET)**  
Gallon Can

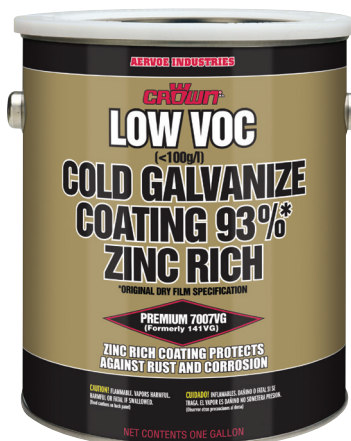
**WEIGHT**  
20 lbs.

**CASE PACK**  
1 Gallon

**CAN SIZE (NET)**  
Gallon Can

**WEIGHT**  
20 lbs.

**CASE PACK**  
1 Gallon







## MRO/INDUSTRIAL GALVANIZE COATINGS

### 187 MRO COLD GALVANIZE COATING

A cost effective zinc spray coating that imparts temporary zinc protection in the weld-through process from fabrication, to maintenance, and repair.

- 97% pure metallic zinc dust with 93% zinc in dry film
- Meets multiple ASTM and MIL specifications (see product data sheet for details)
- Acceptable as a coating in federally inspected meat and poultry plants for application to structural surfaces where there is a possibility of incidental food contact

**CAN SIZE (NET)**  
16-oz. Aerosol (12 oz.)

**WEIGHT**  
13 lbs.

**CASE PACK**  
12 Cans



### 188 MRO BRITE GALVANIZE COATING

An effective way to repair hot-dip galvanizing that has been damaged by abrasion, scratching, cutting or welding. Cosmetically repairs both ferrous and non-ferrous surfaces with one coat interim protection or multiple coats for longer-term protection.

- 97% pure zinc metallic flake with 65% zinc in dry film
- Meets performance requirements of ASTM A780-01
- Acceptable as a coating in federally inspected meat and poultry plants for application to structural surfaces where there is a possibility of incidental food contact

**CAN SIZE (NET)**  
16-oz. Aerosol (12 oz.)

**WEIGHT**  
13 lbs.

**CASE PACK**  
12 Cans



### 143 MRO CHROME GALVANIZE COATING

A reflective, chrome coating that provides the benefits of zinc flake and the properties of chrome.

**CAN SIZE (NET)**  
16-ounce Aerosol (12 oz.)

**WEIGHT**  
14 lbs.

**CASE PACK**  
12 Cans



# AEROSOL PAINTS, GALVANIZING, AND STEEL COATINGS USER GUIDE

AEROSOL PAINT, GALVANIZING AND STEEL COATING USER GUIDE											
AERVOE PRODUCT	BASE MATERIALS	INTERIOR DURABILITY	EXTERIOR DURABILITY	RECOAT WINDOW	DRY TIME TO TOUCH	FULL CURE	CORROSION RESISTANCE	GLOSS	GASOLINE RESISTANCE	MOTOR OIL RESISTANCE	MIR CONTENT
Supreme Color Shield Paint	Acrylic Modified Alkyd	Excellent	Excellent	Before 2 hrs. or after 72 hrs.	15 min.	72 hrs.	Very good alone; excellent with primer	High	Poor	Good	*A
Speed E-Name!	Acrylic VT Alkyd	Excellent	Excellent	Before 2 hrs. or after 72 hrs.	15 min.	72 hrs.	Very good alone; excellent with primer	High	Poor	Good	*A
Rust Proof Any-Way Spray Paint	Acrylic Alkyd Enamel	Excellent	Excellent	Before 2 hrs. or after 72 hrs.	15 min.	72 hrs.	Very good alone; excellent with primer	High	Poor	Good	*A
Engine Paint	Short Oil Alkyd	Excellent	Excellent	Before 2 hrs. or after 72 hrs.	15 min.	72 hrs.	Good alone; excellent with primer	High	Good	Very good	*A
Multipurpose Primer	Phenolic Alkyd Enamel	Excellent	Good	Anytime	10 min.	24 hrs.	Good	Low	Fair	Good	0.8
Sandable Spray Primer	Acrylic	Excellent	Excellent	Anytime	10 min.	24 hrs.	N/A	Flat	Fair	Good	0.8
Clear Acrylic Coatings Gloss / Kleer Kote / Matte	Acrylic	Excellent	Excellent	Anytime	5 min.	24 hrs.	Very good	High/Flat	Poor	Good	0.85
Fluorescent Coating	Acrylic Modified VT Alkyd	Excellent	Good	Before 2 hrs. or after 72 hrs.	15 min.	24 hrs.	Very good alone; excellent with primer	High	Good	Very good	1.3
Hi-Temp Paint	Acrylic Silicone	Excellent	Excellent	Anytime	30 min.	After firing	Excellent alone	Low	Excellent	Excellent	1.85
Roof Accessory & Trim Paint	Acrylic	Excellent	Excellent	Anytime	5 min.	24 hrs.	Unknown	Flat	Poor	Excellent	0.8
Asphalt Roof Primer	Petroleum	N/A	Excellent	Anytime	3-4 hrs.	24 hrs.	N/A	N/A	N/A	N/A	0.7
Anodized Metal & Trim Paint	Short Oil Alkyd	Excellent	Excellent	Anytime	15 min.	72 hrs.	Very good	Flat	Good	Excellent	0.8
Mine Marking Paint	Acrylic VT Alkyd	Good	Fair	N/A	30 min.	8 hrs.	N/A	Flat	Poor	Fair	1.3
Rebar Green Coating	Epoxy/Acrylic Modified Alkyd	Excellent	Excellent	Before 2 hrs. or after 72 hrs.	15 min.	72 hrs.	Excellent	Medium	Good	Very good	0.95
Tree Marking Paint	Regular (Fluorescent) Medium Alkyd	Excellent (Good)	Excellent (Fair)	N/A (N/A)	30 min. (30 min.)	24 hrs. (24 hrs.)	Not applicable (Not applicable)	Flat (Flat)	Excellent (Poor)	Excellent (Very good)	0.8 (1.3)
Wet Coat Tree Marking Paint	Acrylic	Excellent	Excellent	Anytime	10 min.	10 min.	Not applicable	Flat	Fair	Excellent	0.8
Professional Choice Tree Marking Paint (non-fluorescent)	Acrylic	Excellent	Excellent	Anytime	10 min.	20 hrs.	N/A	Flat	N/A	N/A	0.8
Professional Choice Tree Marking Paint (fluorescent)	Acrylic	Good	Fair	Anytime	10 min.	20 hrs.	N/A	Flat	N/A	N/A	1.3
Professional Choice Forest Boundary Marking Paint (non-fluorescent)	Acrylic	Excellent	Excellent	Anytime	10 min.	20 hrs.	N/A	Flat	N/A	N/A	0.8
143 MRO Chrome Galvanize Coating	Polyterpene	Good	Fair	Before 1 hr. or after 72 hrs.	10 min.	24 hrs.	Best over 187/188	Metallic	Poor	Good	1.25
187 MRO Cold Galvanize Coating	Acrylic	Excellent	Excellent	Before 1 hr. or after 72 hrs.	15 min.	24 hrs.	Good alone	Flat metallic	Poor	Good	1.25
188 MRO Brite Galvanize Coating	Acrylic	Excellent	Excellent	After 24 hrs.	10 min.	24 hrs.	Good alone	Metallic	Poor	Very good	1.25
7007 Cold Galvanize Coating	Acrylic	Excellent	Excellent	Before 1 hr. or after 72 hrs.	15 min.	24 hrs.	Excellent alone	Flat Metallic	Poor	Good	1.25
7008 Bright Galvanize Coating	Acrylic	Excellent	Excellent	After 24 hrs.	15 min.	24 hrs.	Excellent alone	Metallic	Poor	Very good	1.25

\*A = Flat 0.8, Metallic 1.25, Non-Flat 0.95



# MARKING PRODUCTS

## INVERTED MARKING PAINTS

Aervoe Industries Incorporated offers the most complete line of inverted marking paints and marking coatings in the world. Choose from the wide range of application-specific aerosol and bulk marking products, including paints, chalk, and specialty marking products. The higher paint solids level that is an Aervoe standard means a more durable mark, and more linear feet per ¾" mark with one-coat coverage. All inverted aerosol cans are activated by hand with the patented Spray-Thru Cap, or can be used with cap on or off in Aervoe #1244 Spot Marker or #1245 Marking Stick applicators.

### SURVEY MARKING PAINT

A superior upside-down marking paint that is designed for survey marking. It provides the best quality paint in terms of color visibility, color retention, durability, and a lasting mark of up to six months.



**CAN SIZE (NET)**  
20-oz. Aerosol (17 oz.)

**WEIGHT**  
18 lbs.

**CASE PACK**  
12 cans

#### COLOR SELECTION

##### Regular

201 Red	208 Hi-Vis Yellow
202 Yellow	209 Light Blue
203 Blue	210 Silver (15 oz.)
204 Green	212 Purple
205 Orange	280 Concrete Gray
206 Black	281 H.D. Red
207 White	

##### Fluorescent

220 Fl. Red	227 Fl. Blue
222 Fl. Orange	229 Fl. Pink
224 Fl. Green	230 Fl. Red-Orange
226 Fl. Yellow	288 H.D. Fl. Orange

H.D. = (High Delivery) 30% greater than other colors.

**Note:** Survey Marking Paint contains a non-freezing formula; operational to 14°F (-10°C).



### CONSTRUCTION MARKING PAINT

The flagship of the line, offering a high quality paint that is priced competitively to meet a variety of marking applications while providing good color visibility and durability.



**CAN SIZE (NET)**  
20-oz. Aerosol (15 oz.)

**WEIGHT**  
18 lbs.

**CASE PACK**  
12 cans

#### COLOR SELECTION

##### Regular

251 Black	257 Orange
252 Yellow	258 Hi-Vis Yellow
254 Blue	259 Green
255 White	260 Purple
256 Red	

##### Fluorescent

246 Fl. Red	250 Fl. Blue
247 Fl. Orange	253 Fl. Yellow
248 Fl. Green	283 Fl. Red-Orange
249 Fl. Pink	



### INVERT-A-CAP®

The ultimate writing tool in inverted marking paint. Use where controlled applications (letters and numbers) are needed, in addition to lines. Best positive delivery cut-off and non-clogging performance with the least possible tip paint build-up.

**CAN SIZE (NET)**  
16-oz. Aerosol (12 oz.)

**WEIGHT**  
14 lbs.

**CASE PACK**  
12 cans

#### COLOR SELECTION

261 Red	272 Fl. Orange
262 Yellow	274 Fl. Green
263 Blue	275 Fl. Red-Orange
266 Black	276 Fl. Yellow
267 White	279 Fl. Pink





## WATER-BASED MARKING PAINT

This patented (#5,158,609), water-based formulation is made specifically for marking on turf surfaces. It will not damage or burn grass roots. Provides a mark that will last up to two months, but can be cut off after the grass has grown out.

**CAN SIZE (NET)**  
20-oz. Aerosol (15 oz.)

**WEIGHT**  
17 lbs.

**CASE PACK**  
12 cans

### COLOR SELECTION

- 290 Blue
- 291 White
- 292 Red
- 293 Yellow



## MARKING CHALK

A special blend of raw materials that are safe on all surfaces, and are designed specifically for temporary marking. Mark disappears in 10 – 20 days when exposed to water, traffic, and other abrasions. It can also be washed off with a pressure washer if desired. 100% biodegradable.

**CAN SIZE (NET)**  
20-oz. Aerosol (15 oz.)

**WEIGHT**  
16 lbs.

**CASE PACK**  
12 cans

### COLOR SELECTION

- |           |            |
|-----------|------------|
| 214 Blue  | 217 Orange |
| 215 White | 218 Yellow |
| 216 Red   | 219 Green  |

## 200 CLEAR COAT

This upside-down clear coating is used to seal and protect construction chalk lines and other temporary marks from wind, moisture, and traffic.

**CAN SIZE (NET)**  
20-oz. Aerosol (15 oz.)

**WEIGHT**  
16 lbs.

**CASE PACK**  
12 cans



## MARKING APPLICATORS



Shown with marking flags and can installed

1244

1245



Ergonomic grip and trigger.

**PROD #**  
1244 Spot Marker  
1245 Marking Stick

**WEIGHT**  
1 lb.  
2 lbs.

**CASE PACK**  
1 ea.  
1 ea.



# APWA/ONE-CALL COLORS

The American Public Works Association (APWA) requires public agencies, utilities, and contractors that excavate underground to use this color standard to identify the location and type of sub-surface utilities. Aervoe Industries was the first marking paint manufacturer to provide the uniform standard for these colors, and our products still proudly carry the One-Call Systems International trademark.



Know what's below.  
Call before you dig.

APPLICATION	AERVOE PRODUCT	INVERT-A-CAP®	CONSTRUCTION	SURVEY
Electric	Red	261	256	201, 281
Gas-Oil	Yellow	262	252	202, 282
Water	Blue	263	254	203
Sewer	Green	274	259	204
Communication/CATV	Orange	272	257	205
Proposed Excavation	White	267	255	207
Reclaimed Water	Purple		260	212
Temporary Survey Marking	Pink	279	249	229

Fluorescent colors may be utilized in place of organic colors if acceptable by local standard.

## STAKE DIP

A highly pigmented, solvent-based paint for marking, and designed for use as a stake dip. Adheres to most wood surfaces. Visible for 3-6 months depending on exposure.

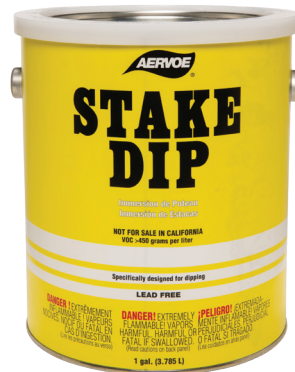
**CAN SIZE (NET)**  
Gallon Can

**WEIGHT**  
22 lbs.

**CASE PACK**  
2

### COLOR SELECTION

- 220G Fl. Red
- 222G Fl. Orange



## MARKING PENS & INK

### HEAVY DUTY MARKING PENS

Medium point, felt tip, valve action pens. Industrial-strength and oil-based to mark virtually any surface.

**WEIGHT**  
5 lbs.

**CASE PACK**  
48 Pens

### COLOR SELECTION

- 1221 Red
- 1222 Yellow
- 1226 Black
- 1227 White



### MARKING INK

A permanent marking ink specifically formulated for metalworking and color coding hot metal up to 500°F.

**CAN SIZE (NET)**  
16-ounce Aerosol (12 oz.)

**WEIGHT**  
13 lbs.

**CASE PACK**  
12 Cans

### COLOR SELECTION

- 7080 Black
- 7083 White



# STRIPING PAINT AND APPLICATORS

## STRIPING PAINT (Solvent-Based)

AerVOE Striping Paint is designed to adhere to a variety of surfaces, especially asphalt and concrete. Asphalt black is available to correct mistakes, or cover existing lines. Clear protects and seals stripes.

- One case of aerosols will yield a 2-inch stripe approximately 2,600 linear feet
- Apply aerosol with #1745 Striping Stick, #800 or #801 Vers-A-Striper

CAN SIZE (NET)	WEIGHT	CASE PACK
20-oz. Aerosol (18 oz.) Gallon Can	19 lbs. 24 lbs.	12 cans 2 Gallons

### COLOR SELECTION

710 Striping White	750 Striping Blue
720 Striping Yellow	760 Striping Green
730 Striping Red	770 Asphalt Black
740 Striping Orange	780 Striping Clear



## SUPREME STRIPING PAINT (High Solids, Solvent-Based)

Our top-of-the-line solvent-based striping paint provides an opaque line that remains durable against ground traffic scuffing.

- One case of aerosols will yield a 4-inch stripe approximately 800 linear feet
- Apply with #1745 Striping Stick, #800 or #801 Vers-A-Striper

CAN SIZE (NET)	WEIGHT	CASE PACK
20-oz. Aerosol (18 oz.)	19 lbs.	12 cans

### COLOR SELECTION

701 Traffic White Supreme
702 Traffic Yellow Supreme

## WATER-BASED STRIPING PAINT

A highly pigmented formulation that is safe for all surfaces. It will not cause leaf yellowing, root damage, or burn grass. Will not harm artificial turf and may be removed with #5075 Biodegradable Cleaner/Degreaser.

- One case of aerosols will yield a 2-inch stripe approximately 2,600 linear feet
- Apply aerosol with #1745 Striping Stick or #801 Vers-A-Striper

CAN SIZE (NET)	WEIGHT	CASE PACK
20-oz. Aerosol (18 oz.) Gallon Can	19 lbs. 24 lbs.	12 cans 2 Gallons

### COLOR SELECTION

790 Striping White	793 Striping Red
791 Striping Yellow	796 Striping Fl. Orange
792 Striping Blue	



All AerVOE aerosol striping paints use a new tip design to produce the sharpest edges available.



## REDO-IT

Adheres to concrete and asphalt to cover mis-marked striping lines or prepare a surface for new striping in one easy step. #830 can be applied to walls to cover graffiti.

- Apply with #1745 Striping Stick, #800 or #801 Vers-A-Striper

CAN SIZE (NET)	WEIGHT	CASE PACK
20-oz. Aerosol (17 oz.)	17 lbs.	12 cans

### COLOR SELECTION

830 Concrete
831 Asphalt



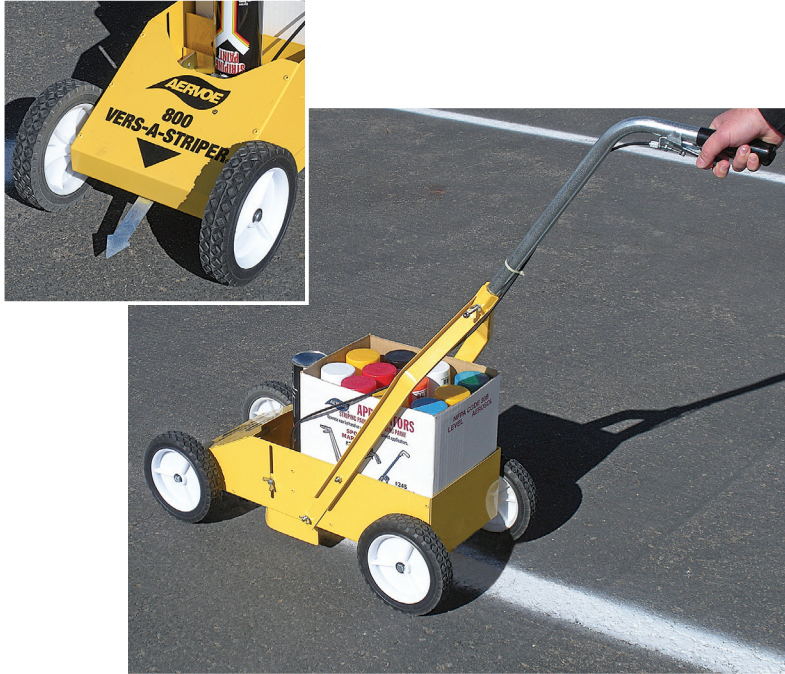
# AERVOE STRIPING APPLICATORS

## 800 VERS-A-STRIPER® - Pavement

A lightweight, heavy-duty applicator for Aervoe aerosol Striping Paint. Stripe widths up to 4 inches. For use on hard surfaces such as asphalt and concrete. Includes a striping alignment guide.

**WEIGHT**  
26 lbs.

**CASE PACK**  
1 ea.



## 1745 STRIPING STICK

For stenciling and touch up. Approximately 36" long with comfort-grip handle and trigger. Use with Aervoe Striping Paint only.

**WEIGHT**  
2 lbs.

**CASE PACK**  
1 ea.



## 801 VERS-A-STRIPER® - Turf and Dirt

Specially designed for striping athletic fields and other turf and dirt surfaces. For use with Aervoe aerosol Striping Paint. Same model as #800, but with 10-inch diameter wheels. Includes a striping alignment guide.

**WEIGHT**  
21 lbs.

**CASE PACK**  
1 ea.



# M.R.O. PRODUCTS

Professionals turn to Aervoe for the hallmark of specialty cleaners, lubricants, and protective coatings for manufacturing, industrial, and commercial use. Formulated to hold up and ensure continued performance, prevent downtime, and increase operating efficiencies. Choose from a wide variety of Aervoe® and Crown® brand lubricants, cleaners, penetrants, cutting fluids and specialty formulations to provide a specific solution to your problem. Aervoe is your one source shop for all the basics in MRO products. Most products available in gallons may also be obtained in 5 and 50-Gallon containers.

## WET LUBRICANTS

### 7340 ALL-4®

Clean, penetrate, lubricate, protect—does All-4 in a silicon-free formula. Spray-Any-Way valve allows product to be applied in either an upright or upside down position and includes an extension tube for hard to reach areas.

- Meets Military Spec. #MIL-C-16173D, Group III

CAN SIZE (NET)	WEIGHT	CASE PACK
16-ounce Aerosol (11 oz.)	12 lbs.	12 Cans
Gallon Can	8 lbs.	1 Gallon
5-Gallon Pail	39 lbs.	1 Pail
55-Gallon Drum (50 gal.)	387 lbs.	1 Drum



### 937 TEF-LUBE™

A superior lubricant with high-grade petroleum oils, solvents, and micron-sized PTFE to provide the finest multi-component penetrating lubricant system available. Includes Spray-Any-Way valve for all-position application and an extension tube for hard to reach areas.

- Performs at temperatures from -60°F to 475°F (-51°C to 246°C)
- Meets MIL-C-372B, MIL-C-23411/A, VV-P-216B, VV-L-820C, and VV-L-751C

CAN SIZE (NET)	WEIGHT	CASE PACK
16-ounce Aerosol (12 oz.)	14 lbs.	12 Cans



### 7043 WIRE ROPE, CHAIN, & CABLE LUBE

A high grade lubricating oil that is fortified with molybdenum disulfide to penetrate inaccessible areas and provide superior lubrication where temperature and stress will break down ordinary lubricants.

- Performs at temperatures between -20°F and 300°F (-29°C and 149°C)
- FALEX E.P. Test Fallen Load to 4,500 lbs.

CAN SIZE (NET)	WEIGHT	CASE PACK
16-ounce Aerosol (12 oz.)	14 lbs.	12 Cans

### 8034 SILICONE LUBE

This multi-purpose lubricant leaves a clear residual film that helps prevent sticking without transferring to the surface. Slower dry allows full penetration into rubber surfaces.

CAN SIZE (NET)	WEIGHT	CASE PACK
16-ounce Aerosol (10.5 oz.)	12 lbs.	12 Cans
Gallon Can	18 lbs.	2 Gallons
5-Gallon Pail	34 lbs.	1 Pail
55-Gallon Drum (50 gal.)	340 lbs.	1 Drum



### 932 FOOD GRADE LUBE OIL

An economical, non-silicone lubricating oil that penetrates the surface to loosen rust, corrosion, scale, and dirt. Leaves a clear, stainless film that prevents machinery parts from sticking.

- NSF H-1 clear mineral oil.
- Dielectric strength of 30kV/mm

CAN SIZE (NET)	WEIGHT	CASE PACK
16-ounce Aerosol (11 oz.)	13 lbs.	12 Cans

### 8036 FOOD GRADE SILICONE LUBE

A low viscosity silicone lubricant that eliminates squeaks, insulates and waterproofs electrical parts. Prevents sticking and won't transfer to end parts

- NSF H-1
- Dielectric strength of 35kV/mm

CAN SIZE (NET)	WEIGHT	CASE PACK
16-ounce Aerosol (10.5 oz.)	12 lbs.	12 Cans
Gallon Can	15 lbs.	2 Gallons

### 7045 HEAVY DUTY OPEN GEAR & WIRE ROPE LUBE

This high-grade asphaltic grease won't become brittle, is not affected by weather, and has outstanding adhesion properties. Performs at temperatures between 0°F and 250°F (-18°C and 121°C).

CAN SIZE (NET)	WEIGHT	CASE PACK
16-ounce Aerosol (12 oz.)	14 lbs.	12 Cans





## DRY FILM LUBRICANTS

### 6075 DRY FILM LUBRICANT

An industrial strength dry PTFE lubricant that is ideal whenever silicone products are not acceptable, and higher temperatures or pressure performance is required. Durable up to 500°F (260°C) for extended periods.

**CAN SIZE (NET)** 16-ounce Aerosol (11 oz.)    **WEIGHT** 13 lbs.    **CASE PACK** 12 Cans



### 6080 DRY MOLY LUBRICANT

This quick drying lubricant leaves a thin film that provides extreme pressure lubrication. Does not contain oil or dilutants.

- Provides lubrication at temperatures between -100°F to 700°F (-73° to 371°C)
- Withstands pressures up to 100,000 psi

**CAN SIZE (NET)** 16-ounce Aerosol (11.6 oz.)    **WEIGHT** 13 lbs.    **CASE PACK** 12 Cans



### 8078 DRY GRAPHITE LUBRICANT

Specifically designed for engine or mechanical parts prior to their assembly. Made of natural colloidal graphite and is an ideal lubricant when petroleum products must be avoided.

- Provides lubrication at temperatures of -100° to 1000°F (-73° to 538°C)

**CAN SIZE (NET)** 16-ounce Aerosol (12 oz.)    **WEIGHT** 13 lbs.    **CASE PACK** 12 Cans



## SPRAY GREASE

### 7037 LITHIUM GREASE

This all weather grease and lubricant is recommended for general metal-to-metal applications. Provides all-weather lubrication for moving parts.

- Effective from -70°F to 360°F (-57°C to 182°C)
- Case includes 12 alternate tips with extension tubes for precision application in hard to reach areas

**CAN SIZE (NET)** 16-ounce Aerosol (11 oz.)    **WEIGHT** 13 lbs.    **CASE PACK** 12 Cans



### 7038 RED GREASE

This all-weather red grease and lubricant is recommended for general metal-to-metal applications. The red color provides easy visual inspection.

- Effective from 0°F to 450°F (-18°C and 232°C)
- Case includes 12 alternate tips and extensions for precision application in hard to reach areas

**CAN SIZE (NET)** 16-ounce Aerosol (11 oz.)    **WEIGHT** 13 lbs.    **CASE PACK** 12 Cans

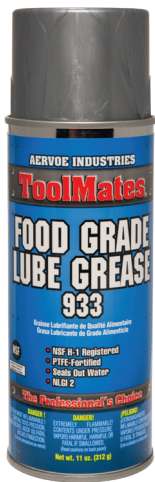


### 933 FOOD GRADE LUBE GREASE

Multi-service, non-melting, fortified waterproof spray grease forms a durable film that withstands high temperature and daily equipment washdowns.

- NSF H-1
- PTFE fortified
- N.L.G.I. Grade 2
- Performs at temperatures up to 475° F
- 35 lbs. load-carrying capacity based on Timken OK load tests
- Dielectric strength of 30kV/mm

**CAN SIZE (NET)** 16-ounce Aerosol (11 oz.)    **WEIGHT** 13 lbs.    **CASE PACK** 12 Cans



### 7041 MOLY GREASE

This high-grade molybdenum disulfide lubricant waterproofs and rustproofs while under heavy stress and vibration. Prevents seizing and galling and stays in place under extreme pressure loads; will not leak out.

- Performs at temperatures up to 450°F (232°C)

**CAN SIZE (NET)** 16-ounce Aerosol (11 oz.)    **WEIGHT** 13 lbs.    **CASE PACK** 12 Cans





# PENETRANTS & CORROSION PREVENTION

## 6007 RUST INHIBITOR

Prevents rust on tools, steel stock, and parts. Provides temporary or extended protection of machinery. Great for long term indoor storage.

CAN SIZE (NET)	WEIGHT	CASE PACK
16-ounce Aerosol (11 oz.)	13 lbs.	12 Cans
Gallon Can	16 lbs.	2 Gallons
5-Gallon Pail	35 lbs.	1 Pail
55-Gallon Drum (50 gal.)	354 lbs.	1 Drum



## 6013 CORROSION SUPPRESSANT 101

Provides excellent rust protection for metal parts that must be stored, indoors or outdoors, for long periods of time. Excellent for outdoor metal shipments and outdoor storage.

- Meets MIL-C-16173E, Grade 4

CAN SIZE (NET)	WEIGHT	CASE PACK
16-ounce Aerosol (10.5 oz.)	12 lbs.	12 Cans
Gallon Can	18 lbs.	2 Gallons
5-Gallon Pail	41 lbs.	1 Pail
55-Gallon Drum (50 gal.)	430 lbs.	1 Drum

## 6030 PENETRATING OIL

Loosens rust and corrosion formed by alkali, fruit acids, water, and electrolysis. Formulated with low surface tension for fast penetrating action. Makes disassembly of parts possible with savings in time and material; attacks rust and corrosion.

- Bulk flash point >160°F (71°C);
- dielectric strength 35kV/mm

CAN SIZE (NET)	WEIGHT	CASE PACK
16-ounce Aerosol (11 oz.)	13 lbs.	12 Cans



### LUBRICANT, GREASE, PENETRANT USER GUIDE

AERVOE PRODUCT	BASE MATERIALS ACTIVE INGREDIENTS	TEMP RANGE	NSF CATEGORY	LUBRICITY FALEX FLC TEST	AEROSOL FLASH POINT	DIELECTRIC STRENGTH	PENETRATING ABILITY	CORROSION PROTECTION
932 Food Grade Lube Oil	Mineral Oil	Up to 475°F	H-1	35 ft. lbs.	<0°F	30kV/mm	Excellent	Good
933 Food Grade Lube Grease	Synthetic Oil, PTFE	Up to 500°F	H-1	>150 ft. lbs.	<0°F	30kV/mm	Good	Excellent
937 Tef-Lube™	Petroleum Oil, PTFE	-60°F to 475°F	—	>100 ft. lbs.	>160°F	19kV/mm	Excellent	Excellent
6030 Penetrating Oil	Petroleum Distillate/Aliphatic Solvents	-50°F to 350°F	—	30 ft. lbs.	>160°F	35kV/mm	Excellent	Good
6075 Dry Film Lubricant	PTFE, Hexane, Acetone	Up to 500°F	—	60 ft. lbs.	<0°F	600V/mm	Good	Good
6080 Dry Moly Lubricant	Molybdenum Disulfide, Liquid Thermoset Resin	Up to 750°F	—	>100 ft. lbs.	<0°F	N/A	Excellent	Good
7037 Lithium Grease	Neutral Lithium Grease, Aliphatic Solvents	-70°F to 350°F	—	>60 ft. lbs.	<0°F	>20kV/mm	Good	Good
7038 Red Grease	NLGI Grade 2 Aluminum Complex Based	0°F to 450°F	—	>200 ft. lbs.	<20°F	TBD	Good	Good
7041 Moly Grease	Molybdenum Disulfide, Naphthionic & Paraffinic Oils	Up to 500°F	—	>100 ft. lbs.	<0°F	N/A	Good	Excellent
7043 Wire Rope, Chain & Cable Lube	Petroleum Base Oils, Molybdenum Disulfide	-20°F to 300°F	—	>100 ft. lbs.	0°F	N/A	Excellent	Good
7045 H.D. Open Gear & Wire Rope Lube	Molybdenum Disulfide, Poly Butane	0°F to 250°F	—	>150 ft. lbs.	<0°F	>20kV/mm	Good	Excellent
7340 All-4	White Oil, Mineral Spirits	-50°F to 350°F	—	40 ft. lbs.	155°F	33kV/mm	Excellent	Excellent
8034 Silicone Lube	Silicone Fluid, Petroleum Naphtha	-50°F to 500°F	—	>30 ft. lbs.	<0°F	35kV/mm	Excellent	Good
8036 Food Grade Silicone Lube	Silicone Fluid, Hexane	-50°F to 500°F	H-1	30 ft. lbs.	<0°F	35kV/mm	Excellent	Good
8078 Dry Graphite Lubricant	Carbon Graphite, Gum Resin	Up to 850°F	—	75 ft. lbs.	<0°F	N/A	Excellent	Excellent

## ANTI-SEIZE

### COPPER ANTI-SEIZE COMPOUNDS

This copper-based anti-seize is designed to lubricate and protect most metals from corrosion and seizure. Protects parts under extreme heat, cold, pressure, steam, and salt water exposure; and against corrosion, seizing, rust, galling, galvanic pitting, and carbon fusing.

- Does not contain clay or soap base thickeners
- Meets MIL-A-907E
- Brush top bottle has angled applicator brush so entire contents can be removed

**PROD #**  
9120  
9123

**CAN SIZE (NET)**  
16-ounce Aerosol (12 oz.)  
1-lb. B/T Bottle

**WEIGHT**  
14 lbs.  
15 lbs.

**CASE PACK**  
12 Cans  
12 Bottles



### 9105 ANTI-SEIZE COMPOUND

Provides an aerosol delivery of graphite in a thin black film for stud assemblies, flange bolts, cylinder heads, high temperature connections, and manhole lugs. Operating temperature range up to 2000°F (1093°C).

**CAN SIZE (NET)**  
16-ounce Aerosol (11 oz.)

**WEIGHT**  
13 lbs.

**CASE PACK**  
12 Cans

ANTI-SEIZE USER GUIDE		
TECHNICAL DATA	COPPER ANTI-SEIZE	ANTI-SEIZE COMPOUND
COLOR	Copper	Black
BOILING POINT (Aerosol) (Bulk)	-44°F to 500°F 500°F	500°F —
FLASH POINT (Aerosol) (Bulk)	-50°F T.C.C. 325°F	<0° —
SPECIFIC GRAVITY (Aerosol) (Bulk)	0.78 1.24	— —
OPERATIONAL TEMPERATURE RANGE	-40°F to 2000°F	40°F to 2000°F
APPLICATIONS	Threaded connections, valves, bushings, sleeves, flanges, machinery, pumps, manifolds, and compressors	Stud assemblies, flange bolts, cylinder heads, high temperature connections, manhole lugs



# ELECTRICAL CLEANING & INSULATING

## 415 OFF-LINE CONTACT CLEANER H.D.

This fast evaporating cleaner is highly refined and designed for use on high-tech electronic hardware and PCBs and PWBs. High-delivery spray action assures complete saturation. It is safe for use on metal, plastics, rubber, and glass surfaces. Flammable, do not use on energized equipment or in operation.

- Includes extension tube for precision application

CAN SIZE (NET)	WEIGHT	CASE PACK
20-ounce Aerosol (15 oz.)	17 lbs.	12 Cans
Gallon Can	14 lbs.	2 Gallons
5-Gallon Pail	38 lbs.	1 Pail
55-Gallon Drum (50 gal.)	375 lbs.	1 Drum



## 8260 OFF-LINE CITRUS CLEANER

A heavy duty citrus based cleaner that is safe on most plastics.

CAN SIZE (NET)	WEIGHT	CASE PACK
20-ounce Aerosol (15 oz.)	16 lbs.	12 Cans
Gallon Can	16 lbs.	2 Gallons
5-Gallon Pail	37 lbs.	1 Pail
55-Gallon Drum (50 gal.)	375 lbs.	1 Drum



## 8276 OFF-LINE CONTACT CLEANER

A fast-evaporating, low-odor cleaner for off-line electrical equipment maintenance. Flammable, do not use on energized equipment or in operation.

CAN SIZE (NET)	WEIGHT	CASE PACK
16-ounce Aerosol (10.9 oz.)	13 lbs.	12 Cans

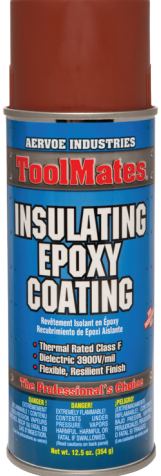


## INSULATING EPOXY COATING

A tough, flexible coating that protects and insulates exposed wires and electrical windings. Ideal for insulating coils, transformers and other electrical components.

- Dielectric strength – up to 2,270 V/mil
- Class F thermal resistance

CAN SIZE (NET)	WEIGHT	CASE PACK
16-ounce Aerosol (12.5 oz.)	14 lbs.	12 Cans



### COLOR SELECTION

- 401 Red
- 402 Black
- 403 Clear

## 6084 RED INSULATING VARNISH

Flexible, tough, oil-proof film. This insulating varnish is a Class F epoxy ester with a dielectric strength of 1200V/mil wet and 2100 V/mil dry. Darkness of color indicates coating thickness.

- Class F thermal resistance

CAN SIZE (NET)	WEIGHT	CASE PACK
16-ounce Aerosol (13 oz.)	15 lbs.	12 Cans



## CLEANERS / DEGREASERS

### 399 Lfp CLEANER/DEGREASER

This fast-drying, industrial strength solvent is inexpensive and ideal for cleaning and degreasing. Removes grease, oil, wax, adhesives, and other contaminants without leaving a residue. High-pressure spray action and unique wetting action that penetrates and degreases even while mechanical parts are operating. Has a low flash point (Lfp). Flammable.

- High dielectric strength of 33kV/mm
- Includes extension tube for precision application in hard to reach cracks and crevices

**CAN SIZE (NET)**  
20-ounce Aerosol (15 oz.)  
Gallon Can  
5-Gallon Pail  
55-Gallon Drum (50 gal.)

**WEIGHT**  
16 lbs.  
16 lbs.  
37 lbs.  
366 lbs.

**CASE PACK**  
12 Cans  
2 Gallons  
1 Pail  
1 Drum



### 860 GLASS CLEANER

An industrial grade cleaner that leaves glass shining with little effort. Will cut through tough factory film and grime to leave a streak-free finish, while retarding fogging.

**CAN SIZE (NET)**  
20-ounce Aerosol (19 oz.)

**WEIGHT**  
19 lbs.

**CASE PACK**  
12 Cans



### 5055 ALL PURPOSE CLEANER

This water and ammonia based cleaner provides a low foaming action cleaner for breaking up grime.

**CAN SIZE (NET)**  
16-ounce Aerosol (15 oz.)

**WEIGHT**  
15 lbs.

**CASE PACK**  
12 Cans



### 5075 BIODEGRADABLE CLEANER/DEGREASER

Non-flammable cleaner and degreaser is concentrated and can be diluted with water to make gallons of cleaner for all washable surfaces. From a full-strength degreaser to an all-purpose cleaner. 100% Biodegradable.

- NSF A-1

**CAN SIZE (NET)**  
20-ounce Aerosol (17 oz.)  
Quart Bottle  
Gallon Bottle  
5-Gallon Pail  
55-Gallon Drum (50 gal.)

**WEIGHT**  
18 lbs.  
25 lbs.  
35 lbs.  
47 lbs.  
485 lbs.

**CASE PACK**  
12 Cans  
12 Quarts  
4 Gallons  
1 Pail  
1 Drum

### CLEANER / DEGREASER USER GUIDE

AERVOE PRODUCT	BASE MATERIALS	FLASH POINT	KB VALUE	EVAPORATION RATE	DIELECTRIC STRENGTH	APPEARANCE	ODOR
399 LFP Cleaner Degreaser	Petroleum Naphtha, Glycol Ether	<20°F	80	4	33kV/mm	Thin, non-foaming	Mild
415 Off Line Contact Cleaner H.D.	Hexane, Ethanol	<0°F	31	8.1	Not applicable	Thin, non-foaming	Mild
860 Glass Cleaner	Water, Blended Alcohols	None	Not applicable	0.9	Not applicable	Clear, foaming	Floral
5021/5025 Hand-y Towels	No reportable quantities	None	Not applicable	<1	Not applicable	Clear	Slight Citrus
5055 All Purpose Cleaner	Ammonia, Water	None	Not applicable	<1	Not applicable	Clear, light yellow	Pine
5075 Biodegradable Cleaner/Degreaser	Water, Surfactants	>200°F	Not applicable	Not applicable	Not applicable	Transparent violet	Citrus
8260 Heavy Duty Citrus Cleaner & Degreaser	Aliphatic Hydrocarbons, DiLimonene	115°F	44	<1	>20kV/mm	Clear	Citrus
8276 Off Line Contact Cleaner	Hexane, Isopropyl Alcohol	<0°F	29	6	Not applicable	Clear, colorless	Hydrocarbon



**HAND-Y CLEANING TOWELS**

These waterless cleaning towels are lint-free, and packaged in a convenient tub with a dispenser lid for easy access. The Hand-Y Pro Towel is smooth on one side and rough on the other for scrubbing grit action.

- ▶ Replaces many light hand cleaners
- ▶ Cleans hands, tools, equipment, and more
- ▶ Pre-moistened, no need for water
- ▶ Fresh citrus scent
- ▶ VOC compliant in all 50 states
- ▶ Bracket available to mount on any wall

**PROD # / PACKAGE SIZE (NET)**  
 5021 Hand-Y Cleaning Towels (75-Towel Tub)  
 5025 Hand-Y Pro Towels (75-Towel Tub)  
 5027 Hand-Y Towel Wall Bracket

**WEIGHT**  
 17 lbs.  
 17 lbs.  
 1 lb.

**CASE PACK**  
 6 Tubs  
 6 Tubs  
 1 Bracket

**DON'T FORGET THE WALL BRACKET!**  
 Mounts to wall and holds 1 tub.



## CUTTING & FABRICATING

### 890 CUTTING OIL (water-based)

Water-based cutting oil improves metal cutting operations and increases efficiencies in machining operations. Reinforced with high-viscosity oils and sulfur-free, extreme pressure additives.

- Liquid bulk formula is thinnable and non-flammable.

CAN SIZE (NET)	WEIGHT	CASE PACK
16-ounce Aerosol (13 oz.)	14 lbs.	12 Cans
Gallon Can	19 lbs.	2 Gallons
5-Gallon Pail	46 lbs.	1 Pail
55-Gallon Drum (50 gal.)	459 lbs.	1 Drum



### 7020 CUTTING OIL (solvent-based)

A solvent-based lubricant and coolant for industrial cutting operations.

CAN SIZE (NET)	WEIGHT	CASE PACK
16-ounce Aerosol (10.5 oz.)	12 lbs.	12 Cans
Gallon Can	18 lbs.	2 Gallons
5-Gallon Pail	42 lbs.	1 Pail
55-Gallon Drum (50 gal.)	417 lbs.	1 Drum

### BUTTERCUTT CUTTING/TAPPING COMPOUND

This high temperature, high pressure film provides dependable tool point lubrication. Formulated with all natural ingredients.

- USDA certified 98% biobased product
- Flash point of 550°F (288°C)

CAN SIZE (NET)	WEIGHT	CASE PACK
5040 Pint Can	17 lbs.	12 Pints
5041 Gallon Bottle	18 lbs.	2 Gallons



### 887 WELDING ANTI-SPATTER

This vegetable based formulation provides a protective film coating to aid in removal of weld spatter, and keeps welding tips and nozzles clean. Does not contain silicones.

CAN SIZE (NET)	WEIGHT	CASE PACK
16-ounce Aerosol (12 oz.)	14 lbs.	12 Cans



### 6001 TOOLMAKER'S INK BLUE

This specially formulated blue layout fluid is for use in tool and die making, pattern-making, machining and other related applications. Easily removed with Crown #6095 Toolmaker's Ink Remover.

CAN SIZE (NET)	WEIGHT	CASE PACK
16-ounce Aerosol (12 oz.)	13 lbs.	12 Cans
Gallon Can	17 lbs.	2 Gallons
5-Gallon Pail	40 lbs.	1 Pail
55-Gallon Drum (50 gal.)	403 lbs.	1 Drum

### 6095 LAYOUT FLUID REMOVER

Use to remove #6001 Toolmaker's Ink Blue and #6090 Prussian Blue High Spot Indicator.

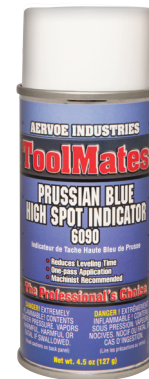
CAN SIZE (NET)	WEIGHT	CASE PACK
16-ounce Aerosol (10.5 oz.)	12 lbs.	12 Cans
Gallon Can	17 lbs.	2 Gallons
5-Gallon Pail	39 lbs.	1 Pail
55-Gallon Drum (50 gal.)	392 lbs.	1 Drum



### 6090 PRUSSIAN BLUE HIGH SPOT INDICATOR

Prussian Blue High Spot Indicator is for determining high spots on surfaces and for mating components in assembly operations. Easily removed with #6095 Toolmaker's Ink Remover.

CAN SIZE (NET)	WEIGHT	CASE PACK
6-ounce Aerosol (4.5 oz.)	7 lbs.	12 Cans



CUTTING & FABRICATING USER GUIDE						
AERVOE PRODUCT	BASE MATERIALS ACTIVE INGREDIENTS	TEMP RANGE	LUBRICITY FALEX FLC TEST	AEROSOL FLASH POINT	PENETRATING ABILITY	CORROSION PROTECTION
887 Welding Anti-Spatter	Lecithin, Water	0° to 312°F	N/A	>100°F	N/A	Good
890 Cutting Oil	Emulsified Oil, Water	0° to 312°F	>100 ft. lbs.	N/A	Good	Good
5040/5041 Buttercutter Cutting/Tapping Comp.	Animal Fat	Up to 650°F	N/A	>650°F	Poor	Good
6001 Toolmaker's Ink Blue	Methyl Ethyl Ketone, Toluene	0°F to 350°F	N/A	<0°F	N/A	N/A
6090 Prussian Blue High Spot Indicator	Lanolin, Trichloroethylene	0°F to 350°F	N/A	<0°F	Poor	Good
6095 Layout Fluid Remover	Heptane, Methyl Ethyl Ketone	0°F to 200°F	N/A	0°F	Excellent	Poor
7020 Cutting Oil Light Oil, Solvent-based	Petroleum Lubricating Oil	0°F to 390°F	90 ft. lbs.	<0°F	Excellent	Good



# MOLD RELEASES AND PROTECTORS



## 3095 MOLD CLEANER

A solvent-based general cleaner of metal molds, in-place or clean-up prior to storage. Removes all grease, oil, and other soils that cause molding imperfections. Does not leave a residue, and won't interfere with molding operations.

<b>CAN SIZE (NET)</b> 16-ounce Aerosol (10.5 oz.)	<b>WEIGHT</b> 13 lbs.	<b>CASE PACK</b> 12 Cans
--	--------------------------	-----------------------------

## 3090 TOOL AND DIE SAVER

Protect stored tools and dies from moisture during storage by absorbing moisture and neutralizing acid formed by a corrosive atmosphere. Ideal for long-term indoor storage.

<b>CAN SIZE (NET)</b> 16-ounce Aerosol (11 oz.)	<b>WEIGHT</b> 13 lbs.	<b>CASE PACK</b> 12 Cans
--	--------------------------	-----------------------------



## SILICONE MOLD RELEASES

Industrial strength silicone release agents that are economically priced and help resist costly breakdowns. Allows for multiple parts releases per application and ideal for hot or cold molding processes. Heat stable at temperatures up to 500°F (260°C)

PROD #	CAN SIZE (NET)	WEIGHT	CASE PACK
3423 Industrial Silicone 5%	20-ounce Aerosol (13 oz.)	15 lbs.	12 Cans
3445 Heavy Duty Silicone	20-ounce Aerosol (13 oz.)	15 lbs.	12 Cans



## 2011 FOOD GRADE SILICONE MOLD RELEASE

Food grade silicone release that is ideal for all polypropylene and polyurethane moldings, including toys, food containers, closures, etc. Ideal for hot or cold molds.

<b>CAN SIZE (NET)</b> 20-ounce Aerosol (13 oz.)	<b>WEIGHT</b> 15 lbs.	<b>CASE PACK</b> 12 Cans
--	--------------------------	-----------------------------

## 3452 LECITHIN MOLD RELEASE

Designed for quick, clean releases on thermosets and thermoplastics. Will not interfere with post-finishing operations; parts can be painted, stenciled, hot stamped, glued, plated, or otherwise decorated. Will not mar clear polyethylene, polystyrene, or other plastics

- Heat stable up to 500°F (260°C)

CAN SIZE (NET)	WEIGHT	CASE PACK
20-ounce Aerosol (13 oz.) Gallon Can	15 lbs. 14 lbs.	12 Cans 2 Gallons



## 3460 PAINTABLE MOLD RELEASE

Specially formulated paintable silicone fluids provide excellent release properties that are ideal for all types of plastics where decorating is required after molding. Allows for multiple part releases per application. Ideal for injection molding and hot or cold molding processes.

- Heat stable up to 500°F (260°C)

CAN SIZE (NET)	WEIGHT	CASE PACK
20-ounce Aerosol (13 oz.)	15 lbs.	12 Cans



## 3470 MOLD RELEASE & PROTECTOR

Wax-based mold release that eliminates part imperfections. Perfect for overnight protection - helps to eliminate flash rust caused from condensation after shut-down. Then at startup no need to remove, just shoot mold clean.

CAN SIZE (NET)	WEIGHT	CASE PACK
20-ounce Aerosol (13 oz.)	15 lbs.	12 Cans

## MOLD RELEASE COMPARISON RESULTS

Test results shown represent independent tests of mold releases by Plastics Product Review. The numbers reflect an average number of shots before part sticking occurs.

BRAND	PRODUCT	ABS	TPE	PP	ALL MATERIALS
Aerove	#3445 Heavy Duty	7.8	7.0	11.4	8.73
Brand K	Heavy Duty	7.2	6.8	11.4	8.47
Brand D	Frekote	4.4	10.0	11.8	8.73

## MOLD RELEASE USER GUIDE

MOLDING MATERIALS	SILICONE 3% - 5%	DRY FILM LUBRICANT	PAINTABLE	TFE	LECITHIN	MOLD RELEASE & PROTECTOR
ABS	●		●		●	
Acetals	●	●	●		●	
Acrylic	●	●	●		●	
Epoxy				●		●
Lexan	●	●	●		●	
Melamine		●	●	●	●	
Nylon	●	●	●		●	
Nurene	●				●	
Phenolics	●	●	●	●	●	●
Polyamide	●	●	●		●	
Polycarbonate	●	●	●		●	
Polyester	●	●	●		●	
Polyethylene	●	●	●		●	
Polypropylene	●	●	●	●	●	
Polystyrene	●	●	●	●	●	
Polyurethane	●			●	●	●
Polyvinyl Chloride	●	●	●		●	
Post Decorating	●	●	●	●	●	
Rubber	●	●	●	●		



## FLEET / UTILITY SERVICE



### 592 BRAKE & PARTS CLEANER <20% VOC

This non-corrosive degreaser is effective in removing oil, grease, wax, dirt, and moisture from brake drums, linings, and pads.

### 591 LOW VOC BRAKE & PARTS CLEANER <10% VOC

Low VOC version meets the stringent California VOC and SCAQMD Requirements (592 is not available in California).

- Non-chlorinated
- High-pressure action and unique wetting properties degreases and penetrates inaccessible areas
- Includes extension tube for precision application

CAN SIZE (NET)	WEIGHT	CASE PACK
20-ounce Aerosol (14 oz.)	16 lbs.	12 Cans
Gallon Can	16 lbs.	2 Gallons
5-Gallon Pail	66 lbs.	1 Pail
55-Gallon Drum (50 gal.)	611 lbs.	1 Drum

### 8079 DRIVE BELT DRESSING

Prevents belt slippage and glazing for better motor efficiency and longer belt life. Increases pulling power up to 50%.

CAN SIZE (NET)	WEIGHT	CASE PACK
16-ounce Aerosol (12 oz.)	13 lbs.	12 Cans
Quart Can	37 lbs.	12 Quarts



### 595 UNDERCOATING AND SOUND INSULATOR

A quick-drying, rubberized film designed to offer maximum coverage and superior insulation properties against road and chassis noise.

- Not available for sale in the state of California

CAN SIZE (NET)	WEIGHT	CASE PACK
20-ounce Aerosol (15 oz.)	16 lbs.	12 Cans



FLEET / UTILITY USER GUIDE						
AERVOE PRODUCT	BASE MATERIALS	FLASH POINT	KB VALUE	EVAPORATION RATE	APPEARANCE	ODOR
591 Low VOC Brake and Parts Cleaner	Petroleum Naphtha, Acetone	-4°F	Not evaluated	Not evaluated	Thin, non-foaming	Mild
592 Brake and Parts Cleaner	Petroleum Naphtha, Acetone	-4°F	95	6.5	Clear, non-foaming	Mild

# NON-DESTRUCTIVE TEST INSPECTION SYSTEMS

Crown die penetrant inspection system quickly locates cracks and defects in metals, glass, and plastics. Ideal for NDT testing in the fields of welding, automotive (manufacturing and repair), aircraft, airlines, railroads, government, oil drilling, foundry, fastener, construction machinery, etc.

## 3-STEP CLEANER, PENETRANT, AND DEVELOPER PROCESS. SOLD INDIVIDUALLY OR AS A KIT.

### #1070 FAULT-FINDER KIT (GROUP 1)

1. Cleaner #1071 (contains 4)
2. Penetrant #1072 (contains 2)
3. Developer #1073 (contains 2)

Does not contain chlorine or sulfur-bearing solvents. Group 1 was developed specifically for test materials where halogenated safety solvents are not permitted.

This system meets RDT F-3-6T standard as established by the Atomic Energy Commission. Conforms to MIL-I-25135. Active ingredients meet chlorine and sulfur requirements of RDT F-3-6T Standard, NAVSHIPS 250-1500 and MIL STD 271.

PROD # / CAN SIZE (NET)	WEIGHT	CASE PACK
1070 Fault-Finder Kit	9 lbs.	1 Kit (8 Cans)
1071 Cleaner 12-oz Aerosol (7.5 oz.)	10 lbs.	12 Cans
1072 Penetrant 12-oz Aerosol (8.5 oz.)	11 lbs.	12 Cans
1073 Developer 12-oz Aerosol (7.5 oz.)	10 lbs.	12 Cans



Fault Finder Kit (Group 1) - #1070



1. Spray on Cleaner and wipe off
2. Spray on Penetrant and allow time to set.
3. Wipe excess Penetrant from surface with Cleaner.
4. Spray on thin layer of white Developer.
5. Visual inspection. Red cracks and other faults will appear in white developer area.



## ADHESIVES

### 8177 INDUSTRIAL ADHESIVE

Provides holding power on most surfaces, rough or smooth. Fast drying, repositionable and flexible. Features a conical mist spray pattern.

- California VOC-compliant
- Replacement for 3M™ Super 77™ Adhesive

**CAN SIZE (NET)**  
20-ounce Aerosol (14 oz.)

**WEIGHT**  
15 lbs.

**CASE PACK**  
12 Cans



### 8190 HI-STRENGTH ADHESIVE

This high-strength, industrial grade adhesive is ideal for extra-strong bonding of materials to a variety of surfaces. Web fan spray.

- California VOC-compliant
- Withstands temperatures up to 130°F (54°C)
- Ideal replacement for 3M™ Hi-Strength 90 Adhesive

**CAN SIZE (NET)**  
20-ounce Aerosol (12 oz.)

**WEIGHT**  
14 lbs.

**CASE PACK**  
12 Cans



### 8178 EPS FOAM/CONCRETE ADHESIVE

A unique pressure sensitive, upside down spray adhesive that provides fast tacking and extra-strong bonding or laminating of expanded polystyrene (EPS).

- Ideal replacement for 3M™ Insulation & Polystyrene Adhesive

**CAN SIZE (NET)**  
20-ounce Aerosol (14 oz.)

**WEIGHT**  
15 lbs.

**CASE PACK**  
12 Cans



# SHIPPING ESSENTIALS

AerVOE Shipping Essentials® were designed for ease of use in small and medium size shipping/receiving operations. Fast-drying, highly opaque Stencil and Cover-Up Inks and two industrial grade adhesives meet the requirements of the most demanding users.

## STENCIL INKS AND COVER-UP INKS

Stencil and Cover-Up Inks are fast-drying, highly opaque coatings for use where product coding, stenciling, color coding, applying instructional information or covering over old markings is required.

- Matched to AMS-STD-595 colors
- Meets MIL-A-A-208A

**CAN SIZE (NET)**  
16-ounce Aerosol (12 oz.)

**WEIGHT**  
14 lbs.

**CASE PACK**  
12 Cans

### COLOR SELECTION

#### Stencil Inks

2801 Red  
2802 Yellow  
2805 Orange  
2806 Black  
2807 White

#### Cover-Up Ink

2811 Tan





# MISCELLANEOUS

## 5205 WATER-WORKS! COATINGS REMOVER

Crown Water-Works! Coatings Remover has a unique ability to break the bond between a coating and substrate, which lifts the paint off in large pieces and allows it to be washed away with water, scraper or stiff bristle brush. Water-based!

**CAN SIZE (NET)**  
20-ounce Aerosol (14 oz.)

**WEIGHT**  
16 lbs.

**CASE PACK**  
12 Cans



## 863 JET FORCE WASP AND HORNET KILLER

Use this fast-acting, powerful aerosol spray to saturate nests instantly and eliminate hornets, wasps, and yellow jackets. Sprays up to 20 feet with a pinpoint stream to reach dense and hard to reach cracks and crevices. Lasting residual deposit prevents reinfestation for weeks.

- High dielectric strength of 41kV/mm
- EPA Reg. No. 706-109-27417
- Not available for sale in Canada
- Approved for sale in California

**CAN SIZE (NET)**  
20-oz Aerosol (14 oz.)

**WEIGHT**  
15 lbs.

**CASE PACK**  
12 Cans



## 5062 ANTI-VANDAL SPRAY

A clear spray blend of solvents that removes lipstick, pencil, ink, crayon, and spray paint from a variety of hard surfaces. Ideal for public areas prone to graffiti abuse. Safe for use on most hard, unpainted surfaces, including concrete, brick, wood, fiberglass, ceramic tile, Formica, and some plastics

**CAN SIZE (NET)**  
16-ounce Aerosol (14 oz.)

**WEIGHT**  
15 lbs.

**CASE PACK**  
12 Cans

# DELIVERY SYSTEMS

## Sprā-tool®

Provides fast, professional results. The Sprā-tool® operates on the same principle as commercial spray guns without the bulky equipment. Its unique design will atomize nearly any liquid, including latex paint. Fast action trigger maintains constant pressure for a smooth, professional-looking finish.

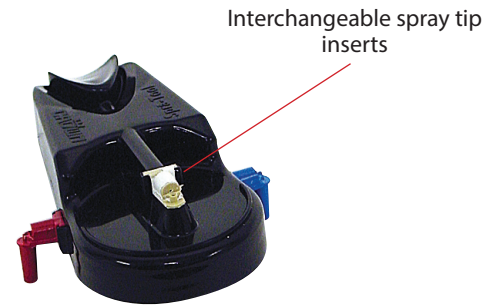
### APPLICATIONS

- Homeowners can purchase any color latex paint and use the Sprā-tool® at home
- Contractors and maintenance workers needing the perfect touch up tool can purchase custom colors and use on the job site
- Perfect for stain or varnish projects



### TIP CHOICES

- Red - high delivery
- White - regular delivery
- Blue - fine mist



Sprā-tool® Snap-on Head #8213  
(extra insert spray tips n/c)

- No wires, hoses, batteries, or bulky compressors
- Interchangeable spray tip inserts
- Sprays most liquids, including higher-viscosity paints such as latex (thin 50% for proper operation)
- Ideal for fast drying, short-life epoxies
- Controlled spray pattern provides even coverage
- Convenient size with resealable poly jar
- Safe to transport
- Fast clean-up, no brushes, rollers, or pans

**Uses:** Cover scratches and paint blemishes on pickups, forklifts, antique cars, buses, bikes, boats, walls, trim, doors, etc. A quick and easy way to refinish shutters, decks, outdoor furniture, flag poles, craft items, etc. Can also be used to apply insecticides to protect plants from insects and diseases.



Fill with desired liquid



Sprā-tool® Power Pack #8211



Sprā-tool® Jar with cap #8212

PROD #	DESCRIPTION	WEIGHT	CASE PACK
8209	Sprā-tool® Kit	7 lbs.	6 Sets
8211	Sprā-tool® Power Pack 12-oz. (6.5-oz. net)	9 lbs.	12 Cans
8212	Sprā-tool® Jar with Cap	2 lbs.	12 Sets
8213	Sprā-tool® Snap-on Head and Tips	1 lb.	1 Head



## 2350 POWER CAULK & ADHESIVE GUN

Eliminates hand and forearm fatigue! No need to manually squeeze a caulking applicator when using this rechargeable gun. Uses any standard 10 oz. caulk, sealant or adhesive tube.

- 1000 lbs. of push force to move different viscosity materials
- Auto reverse relieves pressure to eliminate drips
- Variable speed trigger
- Adjustable flow rate
- Dispenses 100 tubes on a full battery
- 360 rotating collar
- Trigger lock
- LED light
- Wrist strap
- Rechargeable 7.2V li-ion battery

**Includes:** Plastic carrying case, 7.2V li-ion battery pack, 120V AC charging adapter and applicator.

**Uses:** adhesives, silicone, latex, all purpose caulk, roofing sealant, asphalt, concrete, butyl rubber, etc.

PROD # / DESCRIPTION	WEIGHT	CASE PACK
2350 Power Caulk & Adhesive Gun	12 lbs.	1
2351 Replacement Battery Pack	1	1
2352 Replacement Charger	1	1



## 241 TRIGGER SPRAY GUN

Easily transform your aerosol cans into a spray gun by sliding the Aervoe Trigger Spray Gun onto the can rim.

- Ergonomic
- Easy to use with gloves
- Eliminates finger fatigue
- Easy to clean, and reusable

WEIGHT	CASE PACK
2 lbs.	12 Handles



## 2310 ADJUSTABLE HAND SPRAYER

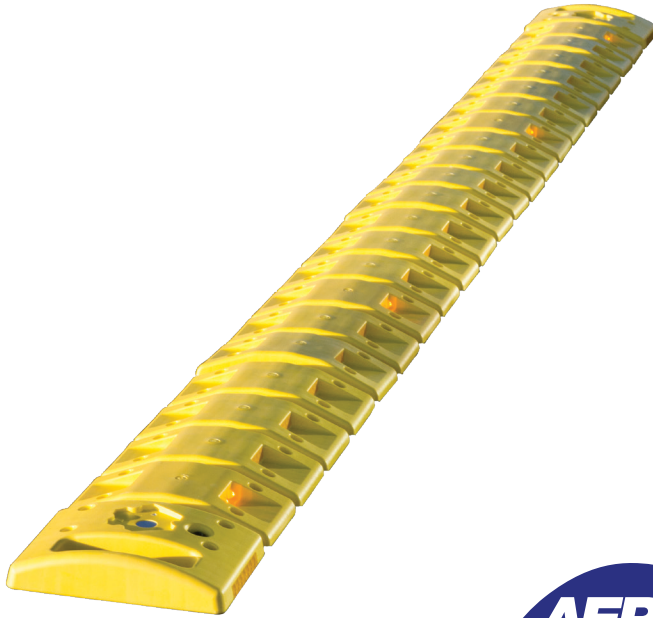
- Easy trigger spray
- Sprays in any direction
- Graduated 22-ounce bottle
- For non-paint sprayable products

WEIGHT	CASE PACK
2 lbs.	6 Bottles

# OTHER AERVOE PRODUCT MARKETS

*Look for our other catalog featuring  
Safety and Traffic Control products.*

- Emergency/safety related products for business and industry
- Many made in the USA!



*All products may be purchased on one purchase order, and shipped and  
billed together on one Aervoe order.*





# MERCHANDISING



An array of merchandising aids are available to assist in selling all AerVOE products — headers, color charts, shelf displays, counter and floor racks. Contact Customer Service for literature, point of sale materials, and other promotional items.

## HEADERS

Colorful headers fit our Plastic Display Rack or for other free-standing displays, Lozier shelving, and gondolas. Compact and versatile, these eye-catching signs become instant traffic boosters.

PROD #	DESCRIPTION	SIZE	CASE PACK
1792AR	Counter Footer Card	17.125" x 2.75"	1 Footer
1794AR	Plastic Display Header Card	21.25" x 12"	1 Header

## PLASTIC DISPLAY RACK

A 4-shelf plastic display rack holds 30 aerosol cans per shelf. Accommodates 16 or 20 oz. cans, quarts or gallon-sized products. Includes header assembly, header graphic sold separately. Dimensions 22" x 15.5" x 70".

PROD #	DESCRIPTION	WEIGHT	CASE PACK
8703	Plastic Display Rack	24 lbs.	1 Rack

## COLOR CARDS

AerVOE Industries color cards are printed using the latest in computer color matching technology that provides the most accurate color match available with current printing processes.

## COUNTER RACK

Convenient 3-shelf metal rack holds 18 cans of aerosol products. Dimensions: 17.25" x 9.75" x 14".

PROD #	DESCRIPTION	WEIGHT	CASE PACK
8702	Counter Rack	6 lbs.	1 Rack

# TRADE REFERENCES

## TRADE & TECHNICAL REFERENCES

This reference section is provided to assist in choosing the correct color for your job site application; and, to define industry standards that will assist in product selection and regulatory understanding.

**A.S.A.** — American Standards Association. Of particular interest in setting the color standard reference for electrical industry equipment.

**ANSI** — American National Standards Institute - A published guide for product color matching standards for O.S.H.A., APWA, traffic, and striping paint products.

**Aromatic Solvents** — Solvents with strong evaporation odor and whose main chemical structure is the benzene ring. Toluene, xylene, ethyl benzene, and others are of this type. While they do not have the extreme adverse health affects of benzene, there are more and more studies showing them to pose significant health risks. They are also in a group of the most reactive air pollutant organic compounds.

**Atomize** — To divide a liquid into extremely minute particles, either by impact with a jet stream of compressed gas, or by passage through a mechanical device (spraytip).

**Biodegradable** — Capable of being decomposed by bacteria or other living organisms.

**California Proposition 65** — A California State Act: "Safe Drinking Water and Toxic Enforcement Act" effective in 1987 that requires special labeling of products deemed by that state to cause cancer or reproductive toxicity. Not consistent with any Federal Hazardous Substance labeling requirements, sets no action levels for any ingredients, but refers to trace elements.

**CARB** — California Air Resources Board

**Category A-1** — NSF-A1 For use as a general cleaner on all surfaces in and around food processing areas, where its use is not intended for direct food contact.

**Category H-1** — Acceptable as a lubricant with incidental food contact for use in official establishments operating under the Federal Meat and Poultry Products Inspection Program. Such products may be used on food processing equipment as a protective anti-rust film, as a release agent on gaskets or seals of tank closures, and as a lubricant for machine parts and equipment in locations in which there is potential exposure of the lubricated part to food.

**C.A.S. Number** — Chemical Abstract Service number is used to identify a chemical ingredient. The service is an organization which indexes information published in Chemical Abstracts by the American Chemical Society, and provides index guides by which information about a particular substance may be located.

**CFCs** — Chlorofluorocarbons are a family of inert, non-toxic, and easily liquefied chemicals used in refrigeration, air-conditioning, or prior to 1976, as a solvent and aerosol propellant. Because CFCs are inert and not destroyed in the lower atmosphere, they drift into the upper atmosphere where their chlorine components destroy ozone. Aervoe products contain no CFCs.



**Chlorinated Solvents** — Volatile liquids containing one or more chlorine atoms in their structure. Widely used in cleaning applications where non-flammability and rapid evaporation rate is required. Exempt for many years from

VOC regulations, and widely used because they are non-flammable.

**Corrosive** — A chemical agent that reacts with the surface of a material, causing it to deteriorate or wear away.

**CPSC** — Consumer Product Safety Commission

**Dielectric Properties** — The measurement of a material's ability to insulate (or not conduct) electricity; in other words, a measure of the ability of the material to maintain a difference in electrical charge over a specific distance.

**Evaporation** — The process of a solvent or liquefied gas dissipating in a vapor or invisible minute particles.

**FDA** — Food and Drug Administration

**Society for Automotive Engineers Color Standards (AMS-STD-595)** — A wide range of color chips for a matching reference system in world-wide uniform color matching. Replaces Federal 595 color standards.

**Flame Propagation (F.P.) Flammability Test** — Test method used to determine flammability rating as expressed on the front panel of an aerosol can label. The test involves spraying product through a candle flame and measuring the distance of the flame extension and observing for flash-back to the sprayhead.

**Flammability** — How easily something will burn or ignite, causing fire or combustion. OSHA defines flammable liquids as having a flashpoint below 100°F. Extremely Flammable is defined by a flash point below 20°F.

**Flash Point** — The minimum temperature at which a liquid gives off sufficient vapors to form, with air, an ignitable mixture.

**FTC** — Federal Trade Commission

**GHS - Global Harmonized System** — Includes criteria for the classification of health, physical, and environmental hazards, as well as specifying what information should be included on labels of hazardous chemicals as well as Safety Data Sheets.

**Greenhouse Effect** — The warming of the earth's atmosphere caused by a build-up of carbon dioxide or other trace gases. This allows the sun's rays to heat the earth, but prevent a counter-balancing loss of heat.

**IATA** — International Air Transport Association provides procedures for the shipper and the operator by which articles and substances with hazardous properties can be safely transported by air on a commercial air transport.

**IMDG Code** — International Maritime Dangerous Goods Code is a detailed international regulation for shipments of marine pollutants as ocean cargo. Their classification and storage location requirements are designed to prevent harm to the marine environment.

**KB Value** — A measure of the solvent power for a hydrocarbon solvent, and is governed by an ASTM standardized test, ASTM D1133.

**Lead Content** — Many orange, yellow, and red paint products today still use inorganic pigments which contain heavy metals such as lead, chromium and cadmium. Organic replacement pigments can be used to provide the identical colors, but require more pigment, resulting in higher cost. Aervoe products contain no lead.



**Liquefied Propellants vs. Compressed Gases** — Most common liquefied propellants are dimethyl ether, butane, isobutane, and propane (hydrocarbons), or blends of the four.

They have very low boiling points, and exit as a gas at ambient temperatures and atmospheric pressure. Under pressure as in an aerosol container, they are liquids, and are intimately mixed with the other ingredients of the formulation. As the product is dispensed from the container, the pressure drops and the liquefied propellant boils, causing atomization of the product. In contrast, compressed gases such as carbon dioxide, nitrogen, air, and nitrous oxide do not liquefy at the pressure inside the container. They mix only very slightly with the other components of the formula. Compressed gases deliver product by acting as a piston to push product to the aerosol sprayhead.

**MIR** — Maximum Incremental Reactivity. Developed for use by the California Air Resources Board (CARB) for various regulatory applications. Currently used in conjunction with VOC (Volatile Organic Compounds).

**NFPA-30B** — National Fire Prevention Association 1991 standard. NFPA 30B is a standard for the manufacture and storage of aerosol products. The standard establishes classification for levels of aerosols. The levels are I, II, and III, each classified by the percentage of flammable material in them, Level I having the least amount and Level III having the greatest amount.

**Net Weight vs. Fluid Ounces** — Net weight expressed in ounces or grams is the weight of the contents of the package. Fluid ounces is the volume of liquid content of the package. By example, a gallon of water weighs more than a gallon of gasoline, but fills the same volume of space. For aerosol cans, the required measurement of the ingredients is by net weight.

**Non-Ferrous Metal** — Metals that contain no iron.

**NSF Authorized** — National Sanitation Foundation. When noted, Aervoe coatings, lubricants, cleaners and corrosion protection products have been formulated to be accepted for use under the Federal Meat and Poultry Inspection Program by the NSF. The final granting of authorization for the proposed use of any such compound is the responsibility of the inspector in charge of the official facility.

**ORM-D** — A material such as a Consumer Commodity which, although otherwise subject to the regulations of 49 CFR 172.101, presents a limited hazard during transportation due to its form, quantity, and packaging. For a product to meet the ORM-D classification it must meet the Consumer Commodity and limited quantity definitions. Aerosol containers under twenty-eight fluid ounces are classified as ORM-D.

**OTC States** — Ozone Transport Commission. A multi-state organization created under the Clean Air Act (CAA). Responsible for advising EPA on transport issues and for developing and implementing regional solutions to the ground-level ozone problem in the Northeast and Mid-Atlantic regions.

**Ozone Depleting Substance (ODS)** — Identified Class I and II chemicals per the Clean Air Act Amendments of 1990 which must contain warning notices on the product label as of May, 1993. These are volatile chemicals containing chlorine atoms in their structure and must be stated "to be harmful to public health and the environment."

**pH** — A measure of the acidity or alkalinity of a solution.

**PSI** — Pounds per square inch.

**Steel Can Recycling Logo** — Can recycling symbol to encourage the recycling of all containers made from steel, including aerosols. Aervoe Industries Incorporated has actively supported steel can recycling for more than 20 years.



**REACH** — Registration, Evaluation, Authorization and Restriction of Chemicals. Adopted by the European union on December 18, 2006 to improve the protection of human health and the environment while maintaining the competitiveness and enhancing the innovative capability of the EU chemicals industry. The Consumer Products Safety and Quality (CPS&Q), formerly known as the European Chemicals Bureau (ECB) was responsible for developing methodologies, tools and technical guidance needed for implementation.

**SQAQMD** — South Coast Air Quality Management District.

**S.D.S.** — Safety Data Sheets required by O.S.H.A. for worker right-to-know regulations describing the product's hazardous ingredients, and safety precautions associated with its use.

**TAC** — Toxic Air Contaminants

**Tag Closed Cup (TCC) Flammability Standard** — Also known as Tag Closed Test (TCT), is one of several types of apparatus for determining flash points. This test is intended for use with liquids having a viscosity less than 45 SUS (Saybolt Universal Seconds) at 100°F (38°C), and a flash point below 200°F (93°C).

**Viscosity** — A measure of the resistance of a fluid, which is being deformed by either shear stress or tensile stress.

**VOC** — Volatile Organic Compounds are organic chemical compounds whose composition makes it possible for them to evaporate under normal indoor atmospheric conditions of temperature and pressure.

**Water-based vs. Water-added** — True water-based aerosols are propelled with dimethyl ether, and contain water, which is working as a vital component of the solvent system. Water-added products are solvent-based products to which a surfactant and water has been added. The presence of added water has only a slight effect

# NUMERICAL AND UPC PRODUCT INDEX

PART#	PG.	UPC	PART#	PG.	UPC	PART#	PG.	UPC
117 Gloss	6	0 88193 00117 2	307G	4	0 88193 10306 7	801 Vers-A-Striper (turf)	17	0 88193 01801 0
120 Matte Clear Acrylic	6	0 88193 00120 2	308 Brite Red	4	0 88193 00308 4	830 Redo-It Concrete	16	0 88193 00830 0
143 Chrome Galvanize	11	0 88193 00143 1	308G	4	0 88193 10308 1	831 Redo-It Asphalt	16	0 88193 00831 7
156 Rebar Green	7	0 88193 00156 1	309 Aluminum	4	0 88193 00309 1	860 Glass Cleaner	24	0 88193 00860 7
157 J.D. Green	4	0 88193 00157 8	310 Silver	4	0 88193 00310 7	863 Wasp & Hornet Spray	33	7 13014 11005 3
167 Cat Yellow(old)	4	0 88193 00167 7	311 Gold	4	0 88193 00311 4	887 Welding Anti-Spatter	26	0 88193 00887 4
168 Cat Yellow (new)	4	0 88193 00168 4	312 Flat Black	4	0 88193 00312 1	890 Cutting Oil	26	0 88193 00890 4
178 School Bus Yellow	4	0 88193 00178 3	312G	4	0 88193 10312 8	890G	25	0 88193 10890 1
187 Cold Galvanize	11	0 88193 00187 5	313 Flat White	4	0 88193 00313 8	932 Food Grade Lube Oil	18	0 88193 00932 1
188 Brite Galvanize	11	0 88193 00188 2	314 Brown	4	0 88193 00314 5	933 Food Grade Lube Grease	20	0 88193 00933 8
196 Fl. Red	7	0 88193 00196 7	318 Light Blue	4	0 88193 00318 3	937 Tef-Lube	18	0 88193 00937 6
197 Fl. Orange	7	0 88193 00197 4	319 Royal Blue	4	0 88193 00319 0	1070 Fault Finder 1 Kit	30	0 88193 01070 9
200 Clear	14	0 88193 00200 1	320 Forest Green	4	0 88193 00320 6	1071 Fault Finder Cleaner 1	30	0 88193 01071 6
201 Red	13	0 88193 00201 8	333 Dark Gray	4	0 88193 00333 6	1072 Fault Finder Penetrant 1	30	0 88193 01072 3
202 Yellow	13	0 88193 00202 5	342 Semi Flat Black	4	0 88193 00342 8	1073 Fault Finder Developer 1	30	0 88193 01073 0
203 Blue	13	0 88193 00203 2	344 Satin Black	4	0 88193 00344 2	1221 Red Soft Tip	15	0 88193 01221 5
204 Green	13	0 88193 00204 9	348 Meter Green	4	0 88193 00348 0	1222 Yellow Soft Tip	15	0 88193 01222 2
205 Orange	13	0 88193 00205 6	349 Meter Gray	4	0 88193 00349 7	1226 Black Soft Tip	15	0 88193 01226 0
206 Black	13	0 88193 00206 3	349G	4	0 88193 20349 1	1227 White Soft Tip	15	0 88193 01227 7
207 White	13	0 88193 00207 0	349G	4	0 88193 10349 4	1244 Spot Marker	14	0 88193 01244 4
208 HiVis Yellow	13	0 88193 00208 7	361 Light Gray	4	0 88193 00361 9	1245 Marking Stick	14	0 88193 01245 1
209 Lt. Blue	13	0 88193 00209 4	361G	4	0 88193 10361 6	1601 Cedar	7	0 88193 01601 5
210 Silver	13	0 88193 00210 0	399 Lfp Cleaner Degreaser H.D.	24	0 88193 00399 2	1603 Rustic Brown	7	0 88193 01603 9
212 Purple	13	0 88193 00212 4	399G	24	0 88193 10399 9	1604 Driftwood	7	0 88193 01604 6
214 Blue	14	0 88193 00214 8	401 Red	23	0 88193 00401 2	1606 Birchwood	7	0 88193 01606 0
215 White	14	0 88193 00215 5	402 Black	23	0 88193 00402 9	1607 Smoke	7	0 88193 01607 7
216 Red	14	0 88193 00216 2	403 Clear	23	0 88193 00403 6	1608 Slate Gray	7	0 88193 01608 4
217 Orange	14	0 88193 00217 9	415 Off Line Contact Cleaner H.D. (F)	23	0 88193 00415 9	1609 Rustic Black	7	0 88193 01609 1
218 Yellow	14	0 88193 00218 6	415G	23	0 88193 10415 6	1612 Dark Brown	7	0 88193 01612 1
219 Green	14	0 88193 00219 3	510 Universal Clear	6	0 88193 00510 1	1613 Terra Cotta	7	0 88193 01613 2
220 Fl. Red	13	0 88193 00220 9	511 Universal White	6	0 88193 00511 8	1616 Adobe	7	0 88193 01616 9
220G	15	0 88193 10220 6	512 Flat Black	6	0 88193 00512 5	1625 Bone White	7	0 88193 01625 1
222 Fl. Orange	13	0 88193 00222 3	513 Satin Black	6	0 88193 00513 2	1626 Sierra Tan	7	0 88193 01626 8
222G	15	0 88193 10222 0	514 Gloss Black	6	0 88193 00514 9	1690 Asphalt Roof Primer	7	0 88193 01690 9
224 Fl. Green	13	0 88193 00224 7	520 Chevrolet Orange	6	0 88193 00520 0	1745 Stripping Stick	17	0 88193 01745 6
226 Fl. Yellow	13	0 88193 00226 1	530 Cadillac Gold	6	0 88193 00530 9	1792AR Rack Footer Card	37	0 88193 01792 0
227 Fl. Blue	13	0 88193 00227 8	540 Alpine Green	6	0 88193 00540 8	1794AR Plastic Display Header Card	37	0 88193 01794 4
229 Fl. Pink	13	0 88193 00229 2	550 Ford Red	6	0 88193 00550 7	1805 Black	7	0 88193 01805 7
230 Fl. Red-Orange	13	0 88193 00230 8	551 Ford Gray	6	0 88193 00551 4	1850 Calif. Black Bronze	7	0 88193 01850 7
240 Spray Can Pouch	8	0 88193 00240 7	560 Ford Blue	6	0 88193 00560 6	1852 Dark Bronze	7	0 88193 01852 1
243 Quart Can Pouch	8	0 88193 00243 8	561 Chevrolet Blue	6	0 88193 00561 3	1857 Bronze (0810)	7	0 88193 01857 6
241 Trigger Spray Gun	35	0 88193 00241 4	562 G.M. Blue	6	0 88193 00562 0	2011 Food Grade Silicone	27	0 88193 02011 1
246 Fl. Red	13	0 88193 00246 9	566 Ford-Merc. Blue	6	0 88193 00566 8	2310 Adjustable Hand Sprayer	35	0 88193 02310 5
247 Fl. Orange	13	0 88193 00247 6	568 Chrysler Blue	6	0 88193 00568 2	2350 Power Caulk Gun	35	0 88193 02350 1
248 Fl. Green	13	0 88193 00248 3	570 Universal Silver	6	0 88193 00570 5	2351 Replacement Battery Pack	35	0 88193 02351 8
249 Fl. Pink	13	0 88193 00249 0	575 Dull Aluminum	6	0 88193 00575 0	2352 Replacement Charger	35	0 88193 02352 5
250 Fl. Blue	13	0 88193 00250 6	580 Cummins Beige	6	0 88193 00580 4	2801 Red	32	0 88193 02801 8
251 Black	13	0 88193 00251 3	582 Cast Iron Gray	6	0 88193 00582 8	2802 Yellow	32	0 88193 02802 5
252 Yellow	13	0 88193 00252 0	583 Steel Blast Gray	6	0 88193 00583 5	2805 Orange	32	0 88193 02805 6
253 Fl. Yellow	13	0 88193 00253 7	591 Low VOC Brake & Parts Cleaner	29	0 88193 00591 0	2806 Black	32	0 88193 02806 3
254 Blue	13	0 88193 00254 4	591G	29	0 88193 10591 7	2807 White	32	0 88193 02807 0
255 White	13	0 88193 00255 1	592 Brake & Parts Cleaner	29	0 88193 00592 7	2811 Tan	32	0 88193 02811 7
256 Red	13	0 88193 00256 8	592G	29	0 88193 10592 4	3010G Safety Red	4	0 88193 13010 0
257 Orange	13	0 88193 00257 5	595 Und. & Snd. Insulator	29	0 88193 00595 8	3020G Safety Yellow	4	0 88193 13020 9
258 HiVis Yellow	13	0 88193 00258 2	610 Red	8	0 88193 00610 8	3049G Meter Gray	4	0 88193 13490 0
259 Green	13	0 88193 00259 9	620 Orange	8	0 88193 00620 7	3090 Tool & Die Saver	27	0 88193 03090 5
260 Purple	13	0 88193 00260 5	630 Yellow	8	0 88193 00630 6	3095 Mold Cleaner	27	0 88193 03095 9
261 Red	13	0 88193 00261 2	645 Dark Green	8	0 88193 00645 0	3423 Industrial 5% Silicone	27	0 88193 03423 1
262 Yellow	13	0 88193 00262 9	650 Blue	8	0 88193 00650 4	3445 Industrial Silicone	27	0 88193 03445 3
263 Blue	13	0 88193 00263 6	660 Black	8	0 88193 00660 3	3452 Lecithin	28	0 88193 03452 1
266 Black	13	0 88193 00266 7	670 White	8	0 88193 00670 2	3452G	28	0 88193 13452 8
267 White	13	0 88193 00267 4	688 Fl. Green	8	0 88193 00688 7	3460 Paintable	28	0 88193 03460 6
272 Fl. Orange	13	0 88193 00272 8	690 Fl. Red	8	0 88193 00690 0	3470 Mold Release and Protector	28	0 88193 03470 5
274 Fl. Green	13	0 88193 00274 2	691 Fl. Pink	8	0 88193 00691 7	3490G Meter Gray	4	0 88193 13490 0
275 Fl. Red-Orange	13	0 88193 00275 9	692 Fl. Orange-Red	8	0 88193 00692 4	5021 Hand-y Towels	25	0 88193 05021 7
276 Fl. Yellow	13	0 88193 00276 6	694 White	8	0 88193 00694 8	5025 Hand-y Pro Towels	25	0 88193 05025 5
279 Fl. Pink	13	0 88193 00279 7	695 Blue	8	0 88193 00695 5	5027 Hand-Y Towel Bracket	25	8 00193 05027 9
280 Concrete Gray	13	0 88193 00280 3	697 Red	8	0 88193 00697 9	5040 Buttermilk Compound Pint	26	0 88193 05040 8
281 HD Red	13	0 88193 00281 0	698 Orange	8	0 88193 00698 6	5041 Buttermilk Compound Gallon	26	0 88193 05041 5
283 Fl. Red-Orange	13	0 88193 00283 4	701 Supreme White	16	0 88193 00701 3	5049 Meter Gray	5	0 88193 05049 1
288 HD Orange	13	0 88193 00288 9	702 Supreme Yellow	16	0 88193 00702 0	5055 All Purpose Cleaner	24	0 88193 05055 2
290 Blue	14	0 88193 00290 2	710 Stripping White	16	0 88193 00710 5	5062 Anti-Vandal Spray	33	0 88193 05062 0
291 White	14	0 88193 00291 9	710G	16	0 88193 10710 2	5075 Biodegradable Cleaner/Degreaser	24	0 88193 05075 0
292 Red	14	0 88193 00292 6	720 Stripping Yellow	16	0 88193 00720 4	5075Q	24	0 88193 25075 4
293 Yellow	14	0 88193 00293 3	720G	16	0 88193 10720 1	5075G	24	0 88193 15075 7
300 Safety Purple	4	0 88193 00300 8	730 Stripping Red	16	0 88193 00730 3	5205 Waterworks Coat. Remover	33	0 88193 05205 1
301 Safety Red	4	0 88193 00301 5	740 Stripping Orange	16	0 88193 00740 2	5310 Red	8	0 88193 05310 2
301G	4	0 88193 10301 2	750 Stripping Blue	16	0 88193 00750 1	5310G	8	0 88193 15310 9
302 Safety Yellow	4	0 88193 00302 2	760 Stripping Green	16	0 88193 00760 0	5310Q	8	0 88193 25310 6
302G	4	0 88193 10302 9	770 Asphalt Black	16	0 88193 00770 9	5320 Orange	8	0 88193 05320 1
303 Safety Blue	4	0 88193 00303 9	780 Stripping Clear	16	0 88193 00780 8	5320G	8	0 88193 15320 8
303G	4	0 88193 10303 6	790 Athletic White	16	0 88193 00790 7	5320Q	8	0 88193 25320 5
304 Safety Green	4	0 88193 00304 6	790G	16	0 88193 10790 4	5330 Yellow	8	0 88193 05330 0
304G	4	0 88193 10304 3	791 Athletic Yellow	16	0 88193 00791 4	5330G	8	0 88193 15330 7
305 Safety Orange	4	0 88193 00305 3	791G	16	0 88193 10791 1	5330Q	8	0 88193 25330 4
305G	4	0 88193 10305 0	792 Athletic Blue	16	0 88193 00792 1	5355 Dark Blue	8	0 88193 05355 3
306 Safety Black	4	0 88193 00306 0	793 Athletic Red	16	0 88193 00793 8	5355G	8	0 88193 15355 0
306G	4	0 88193 10306 7	796 Athletic Fl. Orange	16	0 88193 00796 9	5355Q	8	0 88193 25355 7
307 Safety White	4	0 88193 00307 7	800 Vers-A-Striper (pavement)	17	0 88193 00800 3	5380 Purple	8	0 88193 05380 5



PART#	PG.	UPC
5380G.....	8	0 88193 15380 2
5380Q.....	8	0 88193 25380 9
6001 Toolmaker's Ink Blue.....	26	0 88193 06001 8
6001G.....	26	0 88193 16001 5
6004 Kleer Kote.....	6	0 88193 06004 9
6007 Rust Inhibitor.....	21	0 88193 06007 0
6007G.....	21	0 88193 16007 8
6013 Corrosion Suppressant 101.....	21	0 88193 06013 1
6013G.....	21	0 88193 16013 8
6030 Penetrating Oil.....	21	0 88193 06030 8
6075 Dry Film Lubricant.....	19	0 88193 06075 9
6080 Dry Moly Lubricant.....	19	0 88193 06080 3
6084 Red Insulating Varnish.....	23	0 88193 06084 1
6090 Prussian Blue High Spot Ind.....	26	0 88193 06090 2
6095 Layout Fluid Remover.....	26	0 88193 06095 7
6095G.....	26	0 88193 16095 4
6301 Duz All Spray Gun.....	8	0 88193 06301 9
6310 Red.....	8	0 88193 06310 1
6330 Yellow.....	8	0 88193 06330 9
6350 Light Blue.....	8	0 88193 06350 7
6370 White.....	8	0 88193 06370 5
6490 Fl. Red.....	8	0 88193 06490 0
6490G.....	8	0 88193 16490 7
6491G Fl. Pink.....	8	0 88193 16491 4
6492 Fl. Orange.....	8	0 88193 06492 4
6492G.....	8	0 88193 16492 1
6493 Fl. Yellow.....	8	0 88193 06483 1
6493G.....	8	0 88193 16493 8
6495 Fl. Blue.....	8	0 88193 06495 5
6495G.....	8	0 88193 16495 2
7007 Cold Galvanizing Coating.....	10	0 88193 07007 9
7007G.....	10	0 88193 17007 6
7007Q.....	10	0 88193 27007 3
7007VG Low VOC.....	10	0 88193 47007 7
7008 Brite Galvanize Coating.....	10	0 88193 07008 6
7008G.....	10	0 88193 17008 3
7008Q.....	10	0 88193 27008 0
7008VG Low VOC.....	10	0 88193 47008 4
7020 Cutting Oil.....	26	0 88193 07020 8
7020G.....	26	0 88193 17020 5
7037 Lithium Grease.....	20	0 88193 07037 6
7038 Red Grease.....	20	0 88193 07038 3

PART#	PG.	UPC
7041 Moly Grease.....	20	0 88193 07041 3
7043 Wire Rope, Chain, & Cable Lube.....	18	0 88193 07043 7
7045 H.D. Open Gear & Wire Rope.....	18	0 88193 07045 1
7080 Black.....	15	0 88193 07080 2
7083 White.....	15	0 88193 07083 3
7340 All-4.....	18	0 88193 07340 7
7340G.....	18	0 88193 17340 4
8034 Silicone Lube.....	18	0 88193 08034 4
8034G.....	18	0 88193 18034 1
8036 Food Grade Silicone Lube.....	18	0 88193 08036 8
8036G.....	18	0 88193 18036 5
8078 Dry Graphite Lubricant.....	19	0 88193 08078 8
8079 Drive Belt Dressing.....	29	0 88193 08079 5
8079Q.....	29	0 88193 28079 9
8177 Industrial Adhesive.....	31	0 88193 08177 8
8178 EPS Adhesive.....	31	0 88193 08178 5
8190 Hi-Strength Adhesive.....	31	0 88193 08190 7
8209 Spra-Tool Kit.....	34	0 88193 08209 6
8211 Spra-Tool Power-pack.....	34	0 88193 08211 9
8212 Spra-Tool Jar.....	34	0 88193 08212 6
8213 Spra-Tool head & tips.....	34	0 88193 08213 3
8260 Off-Line Citrus Cleaner.....	23	0 88193 08260 3
8260G.....	23	0 88193 18260 4
8276 Off Line Contact Cleaner.....	23	0 88193 08276 8
8702 Counter Rack.....	37	0 88193 08702 2
8703 Plastic 4-Shelf Display.....	37	0 88193 08703 9
8705 Rail Fronts.....	37	0 88193 08705 3
8706 Rail Dividers.....	37	0 88193 08706 0
9105 Anti-Seize Compound.....	22	0 88193 09105 0
9120 Anti-Seize Copper.....	22	0 88193 09120 3
9123 Anti-Seize Copper.....	22	0 88193 09123 4
Z275 Semi-Gloss White.....	5	0 36333 00275 6
Z277 Semi-Gloss Black.....	5	0 36333 00277 0
Z297 Persimmon.....	5	0 36333 00297 8
Z298 Orange.....	5	0 36333 00298 5
Z307 Acrylic Clear.....	5	0 36333 00307 4
Z308 Silver.....	5	0 36333 00308 1
Z317 Aluminum.....	5	0 36333 00317 3
Z357 Chocolate Brown.....	5	0 36333 00357 9
Z377 Flat White.....	5	0 36333 00377 7
Z387 Gloss Black.....	5	0 36333 00387 6
Z397 Gloss White.....	5	0 36333 00397 5

PART#	PG.	UPC
Z407 Gold.....	5	0 36333 00407 1
Z467 Lemon Yellow.....	5	0 36333 00467 5
Z468 Medium Gray.....	5	0 36333 00468 2
Z469 Hunter Green.....	5	0 36333 00469 9
Z470 Bermuda Blue.....	5	0 36333 00470 5
Z471 Royal Blue.....	5	0 36333 00471 2
Z482 Almond.....	5	0 36333 00482 8
Z487 Flat Black.....	5	0 36333 00487 3
Z489 Light Gray.....	5	0 36333 00489 7
Z506 Antique White.....	5	0 36333 00506 1
Z516 Purple.....	5	0 36333 00516 0
Z517 Rich Red.....	5	0 36333 00517 7
Z518 Pink.....	5	0 36333 00518 4
Z519 Burgundy.....	5	0 36333 00519 1
Z525 Kelly Green.....	5	0 36333 00525 2
Z630 Aluminum.....	6	0 36333 00630 3
Z635 Black.....	6	0 36333 00635 8
Z642 Machinery Gray.....	6	0 36333 00642 6
Z645 White.....	6	0 36333 00645 7
Z813 Red.....	5	0 36333 00813 0
Z1416 Green.....	6	0 36333 01416 2
Z1417 Lemon Yellow.....	6	0 36333 01417 9
Z1418 Red.....	6	0 36333 01418 6
Z1419 Red-Orange.....	6	0 36333 01419 3
Z1421 Hot Pink.....	6	0 36333 01421 6
Z1422 Orange.....	6	0 36333 01422 3
Z1704 Gray.....	5	0 36333 01704 0
Z1706 Red Oxide.....	5	0 36333 01706 4
Z8070 Dark Gray.....	5	0 36333 08070 9
Z8070G.....	5	0 36333 18070 6
Z8072 Gray.....	5	0 36333 08072 3
Z8072G.....	5	0 36333 18072 0
Z8074 Red Oxide.....	5	0 36333 08074 7
Z8076 White.....	5	0 36333 08076 1
Z8078 Black.....	5	0 36333 08078 5





# CUSTOMER SUPPORT SERVICES

## CONTACT INFORMATION

Toll Free Voice: 1-800-227-0196  
Toll Free Fax: 1-800-921-0065  
Phone: 1-775-783-3100  
Fax: 1-775-782-5687  
E-mail: mailbox@aervoe.com  
Website: www.aervoe.com

## PRODUCT DATA SHEETS

Industrial technical data sheets are available to help answer product questions. They list specific product information about usage, features, and compliance, and assist in explaining the Aervoe Advantage. Copies available online at [www.aervoe.com](http://www.aervoe.com), or by calling Customer Service toll free at 1-800-227-0196.

## SAFETY DATA SHEETS

SDS are included in **every case** of Aervoe Industries product that's shipped out. Copies are also available online at [www.aervoe.com](http://www.aervoe.com) in both U.S. and Canadian format.

## ELECTRONIC DATA INTERCHANGE (EDI)

Aervoe is set up for direct electronic exchange of orders, shipping information, and invoicing. To find out more about our EDI capabilities, contact Customer Service at the toll free voice number listed above.

## WAREHOUSE

Orders are shipped from our distribution center in Gardnerville, Nevada.

## FIELD SALES ASSISTANCE

Aervoe employs factory-direct Field Sales Associates to assist in the selling effort.

## QUALITY CONTROL

We are committed to continuous improvement of our Quality Management System which reflects our start in this industry 50 years ago as the major G.S.A. aerosol contractor for military specification lacquers and enamels.

## E-COMMERCE

Aervoe is online with a fully operational storefront. Visit our web site 24 hours a day, 7 days a week to download important product information, see new product introductions and promotions, or place your orders at [www.aervoe.com](http://www.aervoe.com).

## INTERNATIONAL CONSIDERATIONS

It is a corporate goal to increase our presence in Mexico and Latin America, as well as Eastern Canada, and to that end Aervoe is working hard to provide SDS in Canadian English and French. We are also adding French and Spanish labeling to all products. This effort will continue to expand as our international influence expands.

## TECHNICAL ASSISTANCE

Technical assistance or specific product questions are handled by our Product Managers who specialize in both paint and non-paint products. Special requests can be faxed to our toll-free fax number at 1-800-921-0065. Orders can be called in to Customer Service at 1-800-227-0196, faxed to 1-800-921-0065, or placed online at [www.aervoe.com](http://www.aervoe.com).

## AERVOE PRODUCT CATEGORIES

Safety & Traffic Control Products

[www.aervoe.com](http://www.aervoe.com)





**AerVOE Industries, Inc.**

1100 Mark Circle, Gardnerville, NV 89410  
(775) 783-3100 • Fax (775) 782-5687  
Customer Service (800) 227-0196 • Fax (800) 921-0065  
www.aerVOE.com • mailbox@aerVOE.com

**Represented by: Williams Industrial Sales Company**

**For More Than 50 Years... The Professional's Choice**

***Distributed By:***