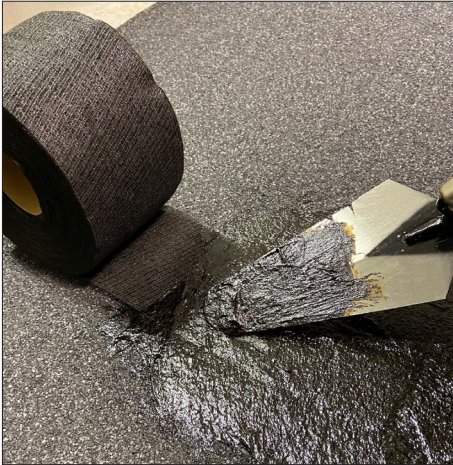




# 470 ASPHALT SATURATED REINFORCING FABRIC

## TECHNICAL DATA SHEET



### DESCRIPTION:

**APOC 470 Asphalt Saturated Reinforcing Fabric** is a high strength, asphalt-saturated cotton reinforcing membrane. This product is lightweight and durable to greatly extend the life of roof mastics and repairs and is preferred by many contractors. APOC 470 can be used in hot or cold conditions, and with emulsion or solvent based systems. This product is ideal for use in cold applied cements, coatings and adhesives and can be used in new construction, re-roofing, roof maintenance and waterproofing applications. APOC 470 is easy to handle in all temperature conditions, is time proven and is easily moldable to meet a variety of roof and waterproofing conditions. Excellent reinforcement for patching holes, cores, and cuts in existing asphalt BUR, coal tar BUR, SBS or APP membranes.

### PRECAUTIONS:

Do not handle until all safety precautions have been read and understood. Obtain special instructions before use. Wear protective gloves and protective clothing. **KEEP OUT OF REACH OF CHILDREN.** Contains bitumen. IF exposed or concerned: Get medical advice/ attention. Store locked up. Dispose of contents/ container to authorized hazardous or special waste collection point and in accordance with applicable local/national/regional/international regulations. SEE SAFETY DATA SHEET.

### WARRANTY AND DISCLAIMER:

APOC warrants product to be free of material defects for a period of 1 year, the "Warranty Period", from the date of purchase. Product must be applied in accordance with the proper application procedures, and for the intended use as stated on the label. Proper preparation and drying conditions must be observed to achieve correct results. Should a product not perform as stated, APOC shall, within its sole discretion and upon receipt of purchaser's timely written notice within the Warranty Period, provide replacement product to repair the affected area or prorate a portion of the purchase price of the defective product based on the claim period. This limited warranty does not cover labor or installation costs, consequential damages or incidental damages. Under no circumstances will the company be liable for any amount in excess of the product purchase price. Contact company below to request a refund with purchase receipt. There are no warranties which extend beyond the description on the face hereof. **THIS LIMITED WARRANTY IS THE SOLE WARRANTY PROVIDED BY APOC TO THE PURCHASER. THERE IS NO IMPLIED WARRANTY OF MERCHANTABILITY OR IMPLIED WARRANTY OF FITNESS FOR A PARTICULAR PURPOSE PROVIDED WITH THIS PRODUCT.**

### TYPICAL PHYSICAL & PERFORMANCE CHARACTERISTICS:

Weight 4 lb per sq.

### Approx. Shipping Weights:

(Note: All approx. weights include container)

Roll Size	Pack Qty	Carton Weight
3"x150'	16	23.5 lb.
4"x150'	12	23.5 lb.
6"x150'	8	24 lb.
9"x150'	4	18 lb.
12"x150'	4	24 lb.
18"x150'	2	18 lb. Special Order
24"x150'	1	12 lb. Special Order
36"x150'	1	18 lb. Special Order

Gardner-Gibson, Inc.

4161 East 7th Avenue. Tampa, FL 33605  
1.800.237.1155 | www.icpgroup.com | D23

