



DUO-SIL[®] Color Guide

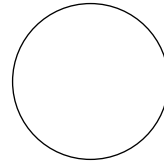
URETHANE ACRYLIC SEALANT & ADHESIVE



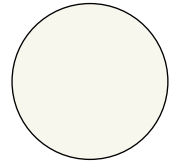
DUO-SIL®

A Perfect Match for Every Application

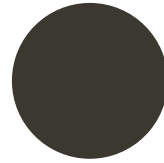
TOP
20
COLORS



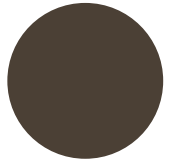
2000
CLEAR



2001
WHITE



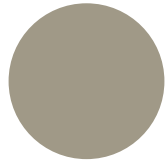
2201
BRONZE



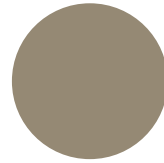
2203
MUSKET BROWN



2303
CLAY



2403
WICKER



2408
HEATHER
GRAY



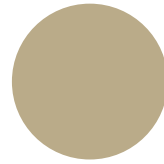
2426
WOODLAND
MIST



2427
ALMOND CREAM



2428
TAN



2429
BEIGE



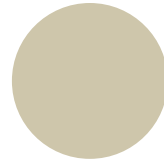
2435
ALMOND
BEIGE



2443
IVORY CREAM



2448
ANTIQUE WHITE



2449
PEARL



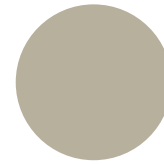
2451
PARCHMENT



2454
FRENCH VANILLA



2458
COBBLESTONE CLAY



2502
SILVER ASH



2942
ANTIQUE
LINEN

For more information, please visit: www.bostik.com/colorlist

DUO-SIL[®] Colors



2003
BLACK



2205
ROYAL BROWN



2206
TOFFEE



2207
IMPERIAL BROWN



2211
TUDOR



2213
BUCKSKIN



2215
BERKSHIRE BROWN



2219
TERRA BRONZE



2221
MAHOGANY



2223
AMERICAN WALNUT



2301
HICKORY



2302
ROYAL CLAY



2304
TRUE TAUPE



2305
SYCAMORE



2307
HEATHER



2308
CACTUS



2309
DRIFTWOOD



2311
SMOKE



2313
TIMBER STONE



2314
SABLE



2401
PRAIRIE SAND



2404
SAND



2405
DESERT SAND



2407
SIERRA TAN



2409
SANDSTONE



2411
DOESKIN



2412
MAPLE



2413
ADOBE TAN



2414
CARAMEL



2415
PALOMINO BEIGE



2416
BUTTERSCOTCH



2417
TAUPE



2418
HONEY WHEAT



2421
THISTLE



2423
COBBLESTONE



2424
SANDY BEACH



2425
COLONIAL TAN



2431
MISSION BEIGE



2433
CANVAS



2439
ANTIQUE IVORY



2441
CLASSIC CREAM



2445
ALMOND



2447
ROYAL BEIGE



2450
VANILLA



2452
SUMMER WHEAT



2453
STONE



2456
HAZEL BROWN



2500
ICE GRAY



2501
CHARCOAL GRAY



2503
WINTER ASH



2504
ROYAL GRAY



2505
SHALE



2509
GRANITE GRAY



2511
PEARL GRAY



2513
SILVER BIRCH



2516
GRAYSTONE



2517
STERLING GRAY



2518
PEWTER GRAY



2519
ASPEN GRAY



2521
DOVE GRAY



2523
DARK CLOUD



2527
HALIFAX GRAY



2529
GRAPHITE



2531
HERITAGE GRAY



2533
IRISH GRAY



2535
GLACIER BLUE



2609
CLASSIC YELLOW



2611
WICKER YELLOW



2613
AUTUMN YELLOW



2614
MAIZE



2702
FERN



2704
SYCAMORE TREE



2705
LIGHT MOSS



2706
SAGE



2707
MOSS



2709
POPLAR GREEN



2710
IVY GREEN



2711
GRECIAN GREEN



2713
PINE NEEDLE



2714
LODEN



2716
HUNTER



2720
EMERALD



2801
WEDGEWOOD BLUE



2803
SLATE BLUE



2805
OCEAN BLUE



2807
BLUE



2809
WINDSOR BLUE



2811
HERITAGE BLUE



2812
INDIGO



2813
CAPE BLUE



2815
BLUE MIST



2817
HARBOR BLUE



2819
COLONIAL BLUE



2901
MONTEREY RED



2902
PEACH



2908
WINTER MAUVE



2910
CORAL BISQUE



2912
CHAMPAGNE



2914
BARN RED



2915
EMBER



2916
BRICK RED



2918
WINE



2920
YELLOW



2922
IVY



2924
CHESTNUT



2926
WHEAT



2930
BLUE-WHITE



2932
VILLAGE GREEN



2934
BONE



2936
MINT



2938
LINEN



2944
GRAY



2946
SANDALWOOD



2948
AZTEC BLUE



2950
SPICE



2952
TERRA COTTA



2954
REDWOOD

Color samples are printed reproductions and should only be used as approximate guides to appearance. Actual shade will depend on lighting and other factors beyond Bostik's control. It is recommended to verify appearance with a test area before main installation.



DUO-SIL®

URETHANE ACRYLIC SEALANT & ADHESIVE



KEY FEATURES

- Interior and exterior use
- Weatherproof and mildew resistant
- Available in 145+ colors, including clear

DESCRIPTION

Bostik DUO-SIL® is a special formulation of urethane and acrylic emulsion which can be used as an adhesive or caulking compound for commercial and residential construction.

DUO-SIL® as a sealant can be used on vinyl, aluminum and fiber cement siding, windows, doors, brick molding, counter tops, showers and most areas where a sealant is needed.

DUO-SIL® as an adhesive has superior bond to most building substrates with no need for primer. DUO-SIL® will adhere to wood, metal, gypsum board, vinyl, PVC, cove base, molding, foam board and many more building products.

PRODUCT FEATURES

- Easy to apply
- Excellent adhesion to most common building substrates
- Available in 145+ industry colors, including clear
- Mildew resistant
- Flexible
- Paintable after 1-2 hours
- Low VOC
- Will not crack or fade
- Non-hazardous and non-flammable

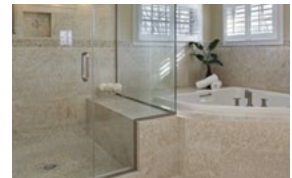
APPLICABLE STANDARDS

DUO-SIL® meets or exceeds the standard specification for latex sealants ASTM C834-00, Type C, Grade 0°C.

PACKAGING

Available in 10.1 fl oz (300 ml) cartridges — 12 per case, 140 cases per pallet.

Available in 20 fl oz (591ml) sausages, white only — 12 per case, 45 cases per pallet.



APPROXIMATE COVERAGE CHART

Coverage for 10.1 fl oz (300 ml) Cartridge

Depth	Width			
	1/8"	1/4"	3/8"	1/2"
1/8"	99	49	33	24
1/4"	—	24	20	12
3/8"	—	—	11	8
1/2"	—	—	—	6

Linear Feet per 10.1 fl oz Cartridge



For more information, contact us at:

1-800-359-6398 | www.bostik.com/us



Bostik is a leading global adhesive specialist in industrial, construction and consumer markets. For more than a century, we have been developing innovative adhesive solutions that are smarter and more adaptive to the forces that shape our daily lives.

All advice, recommendations, figures and safety regulations provided are based on careful investigations, as well as the current state of our experience and are without obligation. Although the documentation has been compiled with the greatest care, we do not accept any liability for inaccuracies, mistakes, typesetting, or printing errors. We reserve the right to modify the respective product if we deem necessary. Since the design, the quality of the substrate, and the processing conditions are beyond our assessment, no liability can be accepted for work performed on the basis of this documentation. We therefore advise you carry out practical tests on site yourself. Our general Terms and Conditions of Sale and Delivery apply to all our sales and deliveries.

Adhesive solutions by **ARKEMA**