

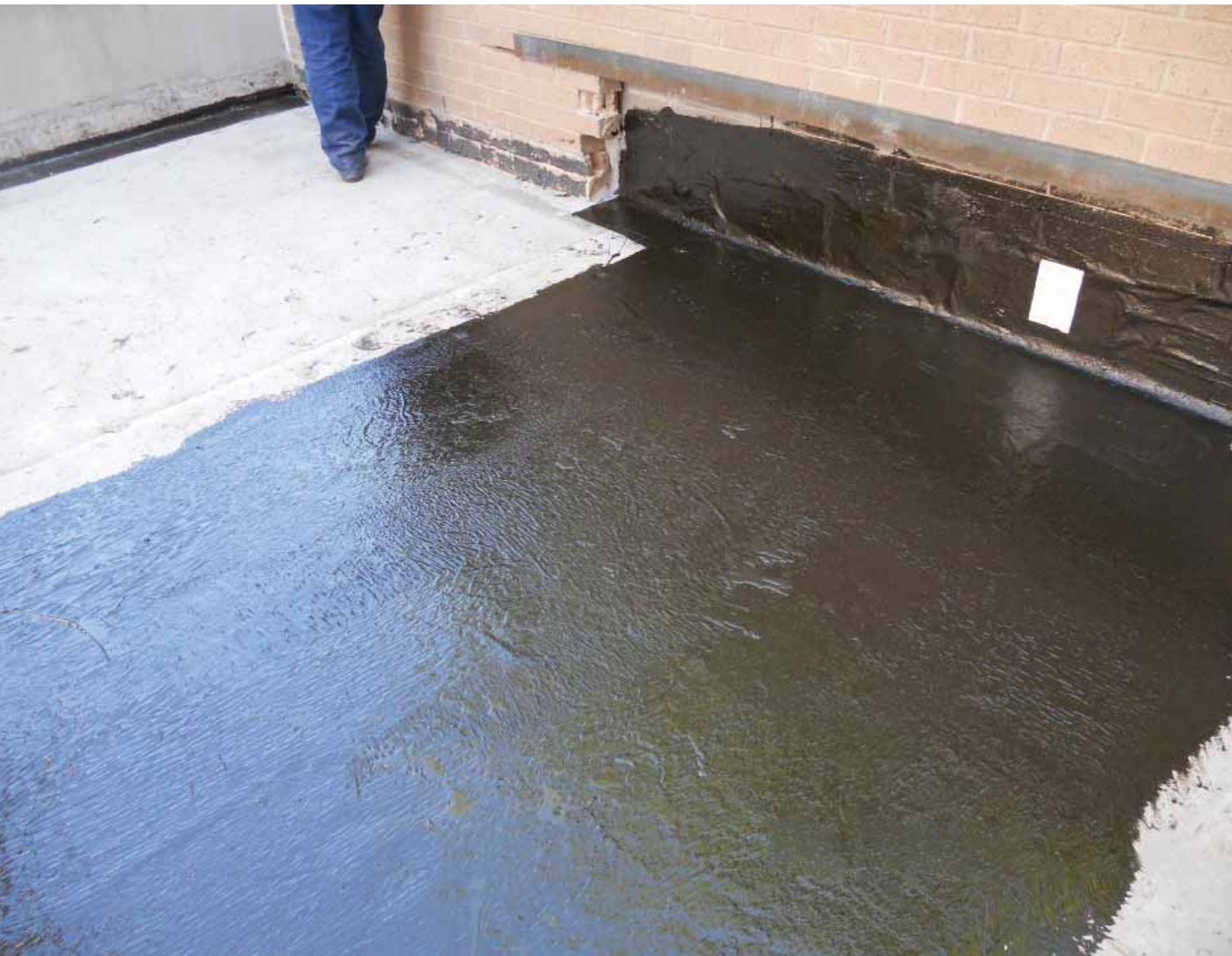
SCIENCE. SERVICE. SOLUTIONS.



# WATERPROOFING

**CCW MiraSEAL™**

**100% Solids, Liquid Applied Waterproofing Membrane**



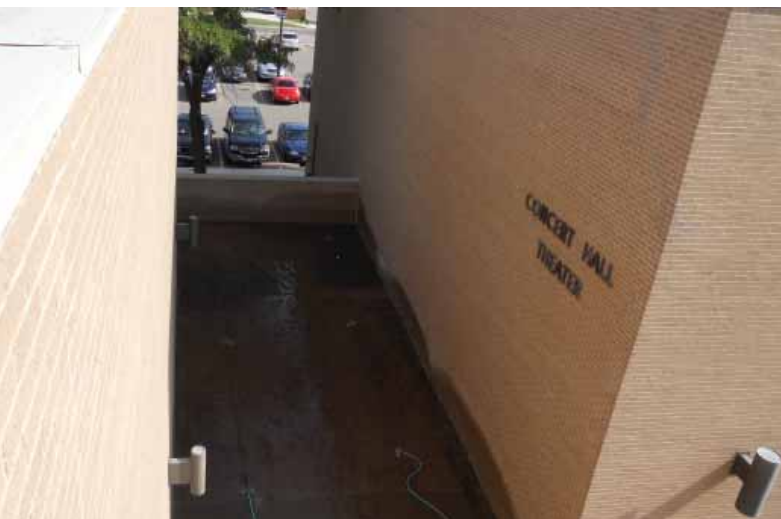
# WATERPROOFING

## CCW MiraSEAL: No Kettles AND a 20-year warranty!

What if you could shave 16 days off your next construction schedule simply by specifying a waterproofing solution that eliminates the need for hot kettles and complicated spray assemblies, plus comes with a 20-year material and labor ultra warranty?

You can with MiraSEAL, a cold fluid-applied, single-component waterproofing membrane offered exclusively by Carlisle Coatings & Waterproofing. MiraSEAL's patented, odor-free formula cures three times faster on green concrete than other cold-applied systems and requires no primer. With MiraSEAL, your next waterproofing job is complete five days before the concrete is cured when using traditional cold-applied systems. And because it contains 100 percent solids, you get a desired 120-mil thickness while using less product. Unlike moisture-cured urethanes, MiraSEAL does not produce off-gassing and allows for immediate recoating.

MiraSEAL is VOC compliant in all 50 states, making it perfectly suited for interior applications and occupied areas. And because it's cold-applied, MiraSEAL allows for the easy detailing of critical areas such as transitions and angle changes. In addition, it can be applied and water-tested in one day.



### Typical Uses

MiraSEAL is available in a single viscosity for both horizontal and vertical surfaces. Its moisture-tolerant, polyether properties cure to form a strong, flexible membrane for both above- and below-grade applications, including:

- Balconies
- Mechanical equipment rooms
- Tunnels
- Below-grade foundation walls
- Between-slab applications
- Green roof systems
- Parking garages
- Plaza decks

### Packaging, Types & Accessories

- CCW MiraSEAL – 5-gallon pails
- CCW Reinforcing Fabric – 36" x 667', 59" x 610'
- CCW-201 Sealant – 1.5-Gallon Kit
- LiquiFiber-W – 6" x 300' rolls or 12" x 300' rolls

For current installation instructions, you can view and download the MiraSEAL Application Guide located on our web site ([www.carlisleccw.com](http://www.carlisleccw.com)).

### MiraSEAL vs. Traditional Cold-Applied

MiraSEAL	vs.	Traditional Cold-Applied
3 days	<b>Concrete Cure Time</b>	14 days
100%	<b>Solids Content</b>	90%
13.4 SF/gal	<b>120-mil Coverage</b>	12.2 SF/gal
150 pails	<b>Material Used</b>	165 pails
4 hours	<b>Material Cure Time</b>	12 hours
Crew of 3 @ 8 hrs	<b>Labor Hours</b>	Crew of 3 @ 8 hrs
120 hours	<b>Total Hours</b>	240 hours
5 days	<b>Days to Completion</b>	10 days
Day 4	<b>Application Begins</b>	Day 15
16 days	<b>Time Saved</b>	0 days
150 pails	<b>Waste</b>	165 pails
20 years	<b>Warranty Option</b>	15 years



## Features & Benefits

- 100% solids
- Single-component, liquid applied membrane
- Solvent free, coal-tar free
- No primer required
- Can be applied to green concrete
- Vertical and horizontal application
- Perfect for planters, smaller areas & detail work
- No “hot permit” required

## Technical Data

Property	Test Method	Results*
Composition	—	Modified Polymer
Color	—	Black
Tack-free Time @ 77°F (25°C), 50% RH	—	60 mins
Solids Content** (Vol.)	ASTM 2697	100%
Low Temp. Flexibility	ASTM C836	No Cracking
Low Temp. Crack Bridging	ASTM C836	No Cracking
Hardness (Shore A)	ASTM C661	10 (+/- 3)
Elongation	ASTM D2370	350%
Tensile Strength	ASTM D2370	95 psi
Water Vapor Transmission Rate	ASTM E96	0.06 perms inches

\*Unless otherwise indicated, individual lots may vary +/- 10%.

\*\*The 100% solids content may generate a nominal VOC level of 20g/l when chemical linkage occurs.

---

## Limited Warranty

Carlisle Coatings & Waterproofing, Incorporated (Carlisle) warrants this product to be free of defects in workmanship and materials only at the time of shipment from our factory. If any Carlisle materials prove to contain manufacturing defects that substantially affect their performance, Carlisle will, at its option, replace the materials or refund its purchase price.

This limited warranty is the only warranty extended by Carlisle with respect to its materials. There are no other warranties including the implied warranties of merchantability and fitness for a particular purpose.

Carlisle specifically disclaims liability for any incidental, consequential or other damages including, but not limited to, loss of profits or damages to a structure or its contents arising under any theory of law whatsoever.

The dollar value of Carlisle's liability and buyer's remedy under this limited warranty shall not exceed the purchase price of the Carlisle material in question.

---

## Carlisle Coatings & Waterproofing

900 Hensley Lane | Wylie, TX 75098 | 800.527.7092 | [www.carlisleccw.com](http://www.carlisleccw.com)

