

## 3/4" Channel Clip (CC33)

### 20ga (33mil) 3/4" U-Channel Lateral Bracing Clip

The ClarkDietrich CC33 clip is used to secure U-Channel or Cold Rolled Channel (CRC) to non-structural wall studs. The wall stud friction fit design allows for as little as one screw for the connection to the U-Channel. The CC33 clip is a stiffened, G90 galvanized steel clip that's tested and designed to facilitate the rapid, efficient installation of 3/4" U-Channel lateral bracing for non-structural interior wall framing constructed of ProSTUD® Drywall Framing or non-structural studs.

CC33 clips are fastened using #8 self-drilling screws driven through the clip hole into the U-Channel. More than one screw may be needed depending on design. Design loads & tables can be found at [www.clarkdietrich.com/CC33](http://www.clarkdietrich.com/CC33)

- The CC33 clip should not be used in studs over 6" wide
- US Patent No. D822,455

### Product Data & Ordering Information:

<b>Material:</b>	33ksi yield Strength
<b>Coating:</b>	G90
<b>Thickness</b>	33mils (20ga), 0.0346" Design Thickness, 0.0329" Min. Thickness
<b>Dimensions:</b>	Made to fit over 3/4" U-channel and inside a drywall punch-out
<b>Packaging:</b>	200 pieces per bucket
<b>Product Weight:</b>	0.12 lb/piece

### ASTM & Code Standards:

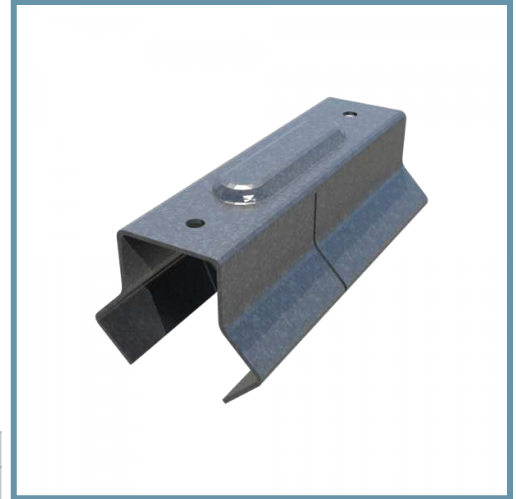
- Galvanized coating meets or exceeds requirements of ASTM C645
- Steel meets or exceeds mechanical and chemical requirements of ASTM A1003
- SDS & Product Certification Information is available at [www.clarkdietrich.com/SupportDocs](http://www.clarkdietrich.com/SupportDocs)

### Alternative Products:

- SwiftClip™ (LS-Series)
- Spazzer® 9200 Spacing Bar

**Sustainability Credits** For more details and LEED letters contact Technical Services at 888-437-3244 or visit [clarkdietrich.com/LEED](http://clarkdietrich.com/LEED).

- **LEED v4.1 MR Credit:** Environmental Product Declarations: EPD (1 point) - Sourcing of Raw Materials (up to 2 points) - Material Ingredients (1 point) - Construction and Demolition Waste Management (up to 2 points)
- **LEED v4 MR Credit:** Building Product Disclosure and Optimization: EPD (1 point) - Sourcing of Raw Materials (1 point) - Material Ingredients (1 point) - Construction and Demolition Waste Management (up to 2 points) - Innovation Credit (up to 2 points).



20ga (33mil) light-duty clip for use with 15mil to 33mil non-structural studs

