

## Bullnose Corner Bead

### 3/8" and 1-1/2" Bullnose Corner Bead

Bullnose corner bead is used to create a smooth, rounded look to standard drywall corners. Vinyl bullnose adds contemporary styling and a sense of openness to any room. Available in choice of 3/4" or more dramatic 1-1/2" radius. Easily installed with nails, screws or staples, this sturdy vinyl product is rust-proof and dent-resistant.

- Rust proof and dent resistant
- Multiple perforations enhance joint compound bond
- Easily cut with snips, utility knives or scissors

### Product Data & Ordering Information:

**Material:** 0.028" PVC (Polyvinyl Chloride)

**Dimensions:** 3/8" & 1-1/2" Radius

Product code	Radius	Flanges	Length	Pcs./Ctn.
BCB38-8	3/8"	7/8"	8'	35
BCB38-9	3/8"	7/8"	9'	35
BCB38-10	3/8"	7/8"	10'	35
BCB38-12	3/8"	7/8"	12'	35
BCB150-8	1-1/2"	7/8"	8'	30
BCB150-10	1-1/2"	7/8"	10'	30
BCB150-12	1-1/2"	7/8"	12'	30

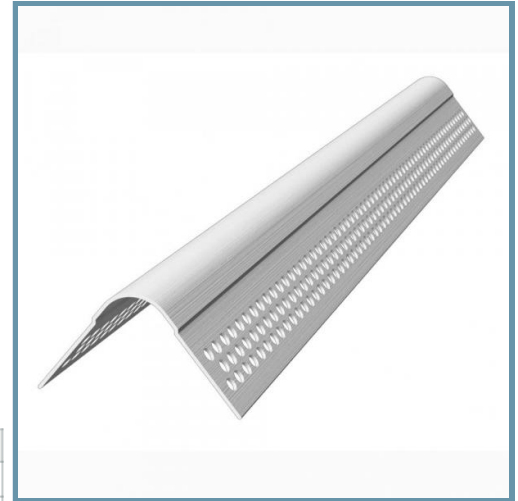
Note: 3/8" Bullnose Archway available with slotted flange in 8' and 10' lengths.

### Code Approvals & Performance Standards

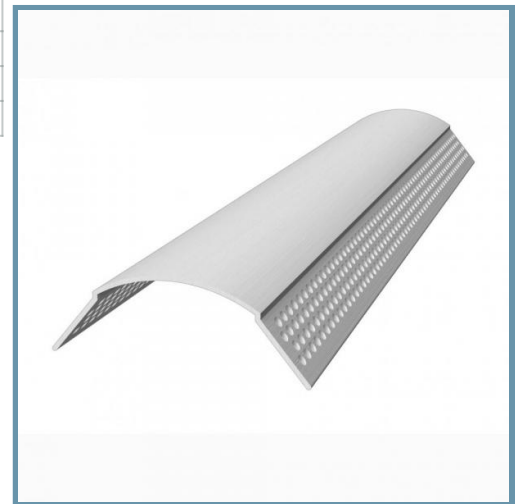
- [ASTM C840](#) Standard Specification for Application and Finishing of Gypsum Board
- [ASTM C1047](#) Standard Specification for Accessories for Gypsum Wallboard and Gypsum Veneer Base
- [ASTM D1784](#) Standard Classification System and Basis for Specification for Rigid Poly(Vinyl Chloride) (PVC) Compounds and Chlorinated Poly(Vinyl Chloride) (CPVC) Compounds
- [ASTM D3678](#) Standard Specification for Rigid Poly(Vinyl Chloride) (PVC) Interior - Profile Extrusions
- [SDS Vinyl Corp](#) PVC Compounds

### Storage:

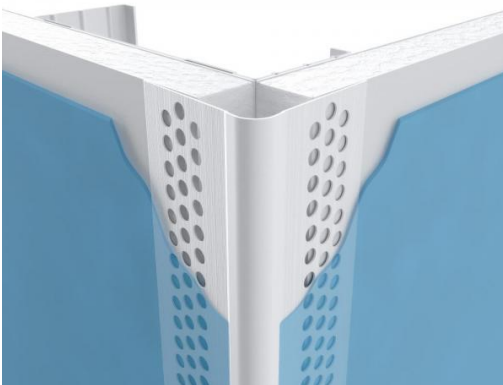
All stored materials shall be kept dry. Materials shall be stacked off the ground, supported on a level platform, and protected from the weather.



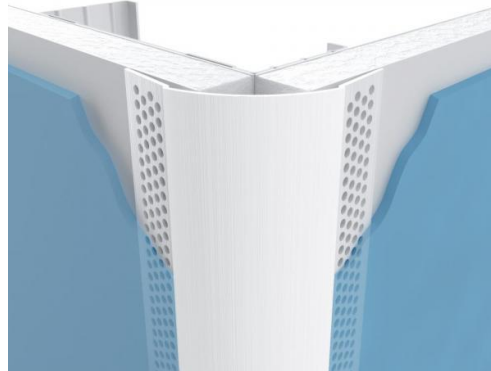
**BCB38**



**BCB150**



**BCB38**



**BCB150**