

Extended FastClip™ 8" Slide Clip (FCEC8-97)

8" long 97mils (12ga), vertical slide deflection clip

ClarkDietrich Extended FastClip™ Slide Clip deflection clips are used to attach exterior curtainwall studs to the building structure and provide for vertical building movement independent of the cold-formed steel framing. The clips are available in standard lengths of 6", 8", 10" and 12" and are ideal for medium to larger standoff conditions. Extended FastClip™ deflection clips install quickly with screws, welds, or powder-actuated fasteners, and provide adjustable standoff to ensure a plumb wall plane. Proprietary Deflection Screws are provided with each clip to ensure friction-free sliding.

For allowable loads for multiple connection options, reference the Clip & Connector Catalog or www.clarkdietrich.com/products/extended-fastclip-fcec for more information.

Product Data & Ordering Information:

Material	Structural grade 50 Type H (ST50H), 50ksi (340 MPa)
Dimensions	1-7/8" x 8" x 4-13/16" (47.6mm x 203.2mm x 122.24mm)
Thickness	97mils (12ga), 0.1017" Design thickness, " Min. thickness
Coating	G90 (Z275) hot-dipped galvanized coating
Product weight	1.66 lb/piece
Packaging	25 pieces per bucket. Includes 80 FastClip deflection screws per box.

Code Approvals & Performance Standards

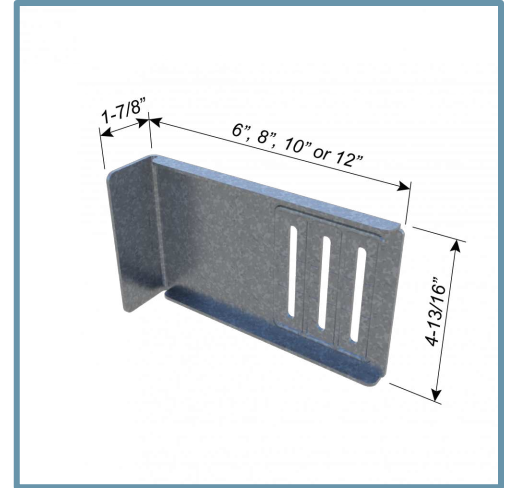
- [ASTM A653](#) Standard Specification for Steel Sheet, Zinc-Coated (Galvanized) or Zinc-Iron Alloy-Coated (Galvannealed) by the Hot-Dip Process
- [ASTM A1003](#) Standard Specification for Steel Sheet, Carbon, Metallic- and Nonmetallic-Coated for Cold-Formed Framing Members
- [Intertek CCRR-0208](#) FastClip (FCSC) (FCEC) & Universal Bypass Clip (UBC)
 - 68mil (14GA) system meets Intertek CCRR-0208
- [SFIA Connector](#) Code Compliance Certification Program
- [SDS For ASTM A1003 Steel Framing Products](#) For Interior Framing, Exterior Framing and Clips/Accessories

Alternative Products:

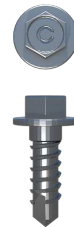
- [Universal Bypass Clips \(UBC\)](#)

Sustainability Credits For more details and LEED letters contact Technical Services at 888-437-3244 or visit clarkdietrich.com/LEED.

- **LEED v4.1 MR Credit:** Environmental Product Declarations: EPD (1 point) - Sourcing of Raw Materials (up to 2 points) - Material Ingredients (1 point) - Construction and Demolition Waste Management (up to 2 points)
- **LEED v4 MR Credit:** Building Product Disclosure and Optimization: EPD (1 point) - Sourcing of Raw Materials (1 point) - Material Ingredients (1 point) - Construction and Demolition Waste Management (up to 2 points) - Innovation Credit (up to 2 points).



- Vertical movement up to 3" (1-1/2" up and 1-1/2" down).
- Use for all medium and large standoff conditions.
- Proprietary Deflection Screws (included) provide frictionless slip connection.
- Custom and longer lengths available.
- U.S. Patent No. 6,688,069



Proprietary
HD Deflection Screw
(10ga and 12ga Clips Only)