

Metal U-Trim #200-A (M20A)

Metal Trim

U-Trim, or Spackle J is used to provide maximum protection and clean finished edges on gypsum panels around door and window openings and when wallboard abuts dissimilar surfaces, such as suspended ceilings, beams, plaster, masonry and concrete. U-Trim is easily installed by sliding trim over the edge of the board and nailing or screwing through the knurled (long) flange. Installation is completed with application of joint compound for a smooth ready-to-paint surface.

Product Data & Ordering Information

Material: 0.012 min thickness, G30 galvanized

Dimensions: 1" leg x Width x 1/2" leg

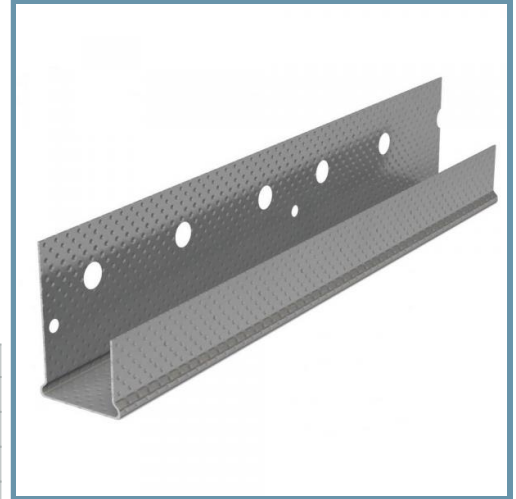
Width	Length	Wt./Ctn.	Pcs./Ctn.
1/2"	8'	36 lbs	50
1/2"	10'	45 lbs	50
5/8"	8'	36 lbs	50
5/8"	10'	45 lbs	50

Code Approvals & Performance Standards

- [ASTM C1047](#) Standard Specification for Accessories for Gypsum Wallboard and Gypsum Veneer Base
- [SDS For ASTM A653 Steel Finishing Products](#) For Interior Finishing and Exterior Finishing

Storage

All stored materials shall be kept dry. Materials shall be stacked off the ground, supported on a level platform, and protected from the weather.



- Rugged steel construction
- Galvanized for corrosion protection
- Knurled, perforated flange enhances compound adhesion

