

## Drywall Z-Furring Channel

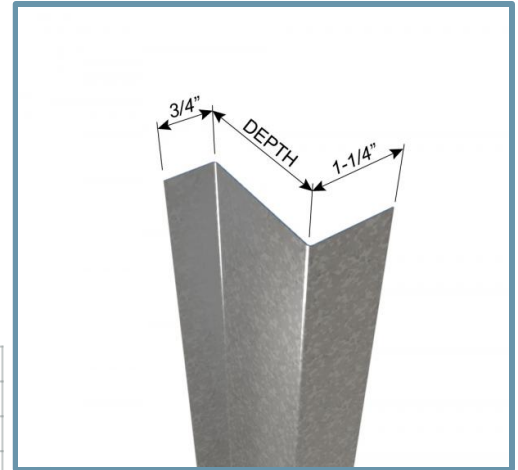
### 1" depth x 18mils (25ga)

Z-Furring channels are an ideal product for furring out the interior walls on an existing masonry or new concrete / masonry walls. It is especially useful when insulation is required on the interior side of a masonry wall. The short leg is attached to masonry and sheathing is attached to the long leg.

The performance and installation of the Z-Furring Channel is the sole responsibility of the design professional and engineer of record. Any customer ordering Z-Furring Channel shall indemnify, defend and hold harmless ClarkDietrich or ClarkDietrich Engineering Services for any loss or damage arising in whole or in part.

### Product Data & Ordering Information:

<b>Material:</b>	Grade 33ksi min. yield strength 18mils (25ga), 0.0188" Design Thickness, 0.0179" Min. Thickness
<b>Coating:</b>	G40EQ (G40 or G60 available)
<b>Dimensions:</b>	Leg 1 = 3/4", Leg 2 = 1-1/4", Depth = 1"
<b>Stock Lengths:</b>	10'-0" long
<b>Weight per 10' piece:</b>	1.84 lbs



### Used in framing applications:

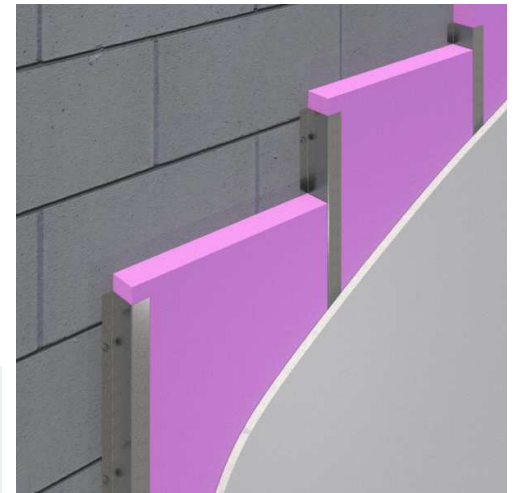
- Furring for masonry walls
- Allows for rigid insulation

### Code Approvals & Performance Standards

- **AISI S220-20** North American Standard for Cold-Formed Steel Framing - Nonstructural Members
  - (Compliant to ASTM C645, but IBC replaced with AISI S220 in IBC 2015)
  - Section A3 Material - Chemical & mechanical requirements (Referencing ASTM A1003/A1003M)
  - Section A4 Corrosion Protection (Referencing ASTM A653/A653M)
  - Section C Installation - (Referencing ASTM C754)
- **AISI S240-20** North American Standard for Cold-Formed Steel Structural Framing
  - (Compliant to ASTM C955, but IBC replaced with AISI S200 in IBC 2015, AISI S240 in IBC 2018)
  - Section A3 Material - Chemical & mechanical requirements (Referencing ASTM A1003/A1003M)
  - Section A4 Corrosion Protection (Referencing ASTM A653/A653M)
  - Section C Installation - (Referencing ASTM C1007)
- **SDS For ASTM A1003 Steel Framing Products** For Interior Framing, Exterior Framing and Clips/Accessories

**Sustainability Credits** For more details and LEED letters contact Technical Services at 888-437-3244 or visit [clarkdietrich.com/LEED](http://clarkdietrich.com/LEED).

- **LEED v4.1 MR Credit:** Environmental Product Declarations: EPD (1 point) - Sourcing of Raw Materials (up to 2 points) - Material Ingredients (1 point) - Construction and Demolition Waste Management (up to 2 points)
- **LEED v4 MR Credit:** Building Product Disclosure and Optimization: EPD (1 point) - Sourcing of Raw Materials (1 point) - Material Ingredients (1 point) - Construction and Demolition Waste Management (up to 2 points) - Innovation Credit (up to 2 points).



### Related Accessories:

- Other profile depths available: 1", 1-1/2", 2", 2-1/2" and 3"
- [Z-Girt for Rainscreen Framing](#)