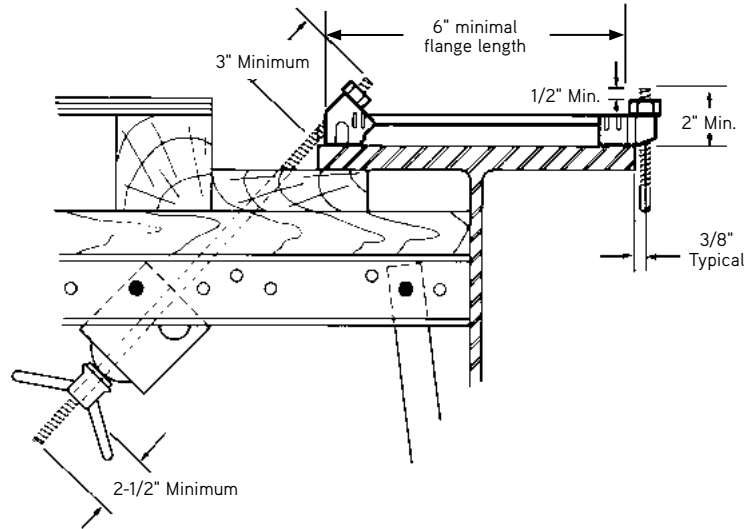


C60 Type 1-A Pres-Steel Hanger

The Type 1-A Pres-Steel Hangers are especially designed to be used when there is a fillet, on the interior side of the beam. This hanger consists of a 90° end clip and 45° end clip electrically resistance welded to a single 0.375" diameter wire strut.

Both end clips are designed to work with 1/2" diameter coil bolts or coil rods. The design allows installation and adjustment from the top of the formwork.



SAFETY NOTE:

This hanger should be used to support overhang brackets only when the weight of concrete finishing machine and/or conveyor machine is supported directly on the exterior bridge beam.

Safe Working Load
3,500 lbs. per Side

SWL provides a factor of safety of approximately 2 to 1.

To Order:

Specify: (1) quantity, (2) name, (3) flange width.

Example:

750 pcs. C60 Type 1-A Pres-Steel Hanger for 12" flange.

Exterior Hangers

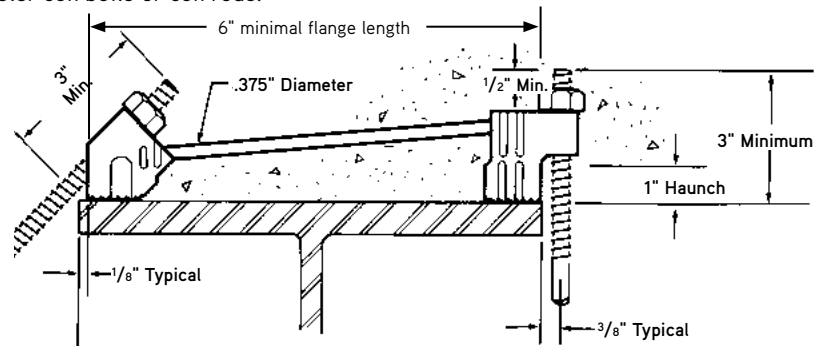
C60 Type 2-A Pres-Steel Hanger

The Type 2-A hanger is similar in design to the Type 1-A hanger above, except it is designed to provide a 1" haunch relief on the interior side.

Both end clips are designed to work with 1/2" diameter coil bolts or coil rods.

SAFETY NOTE:

This hanger should be used to support overhang brackets only when the weight of concrete finishing machine and/or conveyor machine is supported directly on the exterior bridge beam.



Safe Working Load
2,375 lbs. per Side

SWL provides a factor of safety of approximately 2 to 1.

To Order:

Specify: (1) quantity, (2) name, (3) flange width.

Example:

1,250 pcs. C60 Type 2-A Pres-Steel Hanger for 24" flange.