



Georgia-Pacific
Gypsum

Building Reputations Together™

DensDeck®
Roof Boards



Product Overview

Over 20 Years of DensDeck® Roof Boards – Proven Performance

With billions of square feet installed in a complete range of roofing systems and climate extremes, DensDeck Roof Boards have proven their toughness and versatility. The unique construction has been shown to withstand delamination, deterioration, warping and job site damage far more effectively than paper-faced gypsum board and other conventional roofing products such as wood fiberboard and perlite.

- Provides superior fire protection
- Fire, rot and hail resistant
- Holds up well under normal construction and maintenance foot traffic while stiffening and stabilizing roof decks
- Easy to install in all types of roof systems
- Ideal product for direct membrane application
- Tested within roofing systems for sound isolation

DensDeck® is designed to address persistent challenges inherent in commercial roofing assemblies: fire resistance, strength and dimensional stability when installed in a properly designed roof assembly. DensDeck is a fiberglass mat-faced, noncombustible (as described and tested in accordance with ASTM E 136), nonstructural, gypsum core panel.

DensDeck® Prime has been enhanced to provide a broader compatibility and higher performance with roofing adhesives. Face mat enhancements allow adhesives to be applied more uniformly and consistently and results in a stronger bond with the membrane. In fact, in adhered, single ply membrane testing, enhanced DensDeck Prime demonstrated an average of 24% better bond strength than the original product, when using solvent based adhesives.* (Average based on 60 sq. ft./gal [1.47 m²/L] coverage rates.) For fully adhered and self-adhered “peel & stick” roofing systems, as well as hot mopped, cold mastic and torch-applied modified bitumen roofs, DensDeck Prime provides a stronger, more economical installation by reducing the amount of mastic or adhesive, and potentially eliminating the field primer. Consult with membrane manufacturer for actual priming requirements.

1/2” and 5/8” DensDeck Prime Roof Boards are the first and only gypsum roof boards with a limited warranty for up to 90 days of exposure to normal weather conditions when applied vertically on parapet walls.**

**Testing was done in accordance with FM Approvals 4470, Appendix C: Small Scale Tests, Membrane Delamination Tests for Roofing Membranes and Substrates Using Tensile Loading.*

***For complete warranty details, visit www.DensDeck.com.*

DensDeck® DuraGuard provides a durable low perm, integrated coating with all the features of DensDeck roof board. Additionally, the DuraGuard coating provides an ideal substrate for a wide variety of adhered roofing systems, including self-adhered and hot-mopped membranes. Field primer that is typically used to prepare the substrates for self-adhesive membranes may be eliminated by using DensDeck DuraGuard. Also, DensDeck DuraGuard roof boards may be used as a substrate under commercial metal and roof tile applications as a substrate for self-adhesive secondary water barriers. The effect and positioning of DensDeck DuraGuard roof boards low-perm, coating must be considered in the design of roofing assemblies.

Table of Contents

Product Overview	2
Architectural Specifications	3
Standards and Classifications	4
Fire Resistance	4
Wind Uplift Resistance	6
Sound Resistance	10
Sound Control Illustrations	11
Roof System Applications	13
Physical Properties	16
Recommendations and Limitations for Use	18

Georgia-Pacific Gypsum and Sustainability

Georgia-Pacific Gypsum's definition of sustainability is meeting the needs of society today without jeopardizing our ability to do so in the future. We are committed to using resources efficiently to provide innovative products and solutions that meet the needs of customers and society, while operating in a manner that is environmentally and socially responsible, and economically sound.

We continue to focus on:

- Improving energy efficiency at our manufacturing plants
- Seeking out opportunities to reduce water use, and to reuse water more efficiently
- Finding cost effective ways to further reduce air emissions
- Recovering and reusing materials that otherwise would end up in landfills.

Green building codes, standards, and programs are establishing themselves across the country. They promote the use of products that contribute to the performance of the building, along with minimizing environmental and human health impacts over the life of the building or home. Because we embrace product performance and operate in an environmentally, socially, and economically sound manner, owners and architects can feel good about the structures they build using our products.

Many of our products contribute to LEED® and other green building codes, standards, or program credits or requirements. To find out more, please refer to the Sustainable Materials Data Sheets (SMDS) at www.gpgypsum.com for recycled content, regional materials, and low emitting materials information or use our on-line LEED calculator to calculate contribution for a specific credit. For general information on sustainability, click the "Sustainability" tab on the website.

Architectural Specifications

Georgia-Pacific Gypsum's 3-part guide specifications are downloadable, as rewritable Microsoft® Word documents, in both CSI and ARCOM MasterSpec® formats. Georgia-Pacific Gypsum specifications and 3-D Revit® compatible models can be found at www.gpdesignstudio.com. Downloadable specifications are also available online from Building Systems Design, Inc. at www.bssoftlink.com, and ARCOM Product Masterspec at www.masterspec.com.

Code Compliance

DensDeck Roof Boards are manufactured to meet ASTM C 1177 and have the following approvals:

- Florida Product Approved
- Miami-Dade County Product Control Approved

Standards and Classifications – Fire Resistance

DensDeck®, DensDeck® Prime and DensDeck® DuraGuard roof boards are excellent fire barriers over combustible and noncombustible roof decks, including steel decks. Roofing specifications for steel deck installations often require a fire barrier as the component applied above the metal to help control and limit the amount of fuel contributed to a fire beneath the roof.

UL Fire Resistance Ratings. 5/8" (15.9 mm) DensDeck® Fireguard® roof boards are designated as Type DD by UL LLC and included in assembly designs investigated by UL for hourly fire resistance ratings. 5/8" (15.9 mm) DensDeck Fireguard roof boards may also replace any unclassified 5/8" (15.9 mm) gypsum board in an assembly in the UL Fire Resistance Directory under the prefix "P".

UL 790 Classification. DensDeck, DensDeck Prime and DensDeck DuraGuard roof boards have been classified by UL for use as a fire barrier over combustible and noncombustible decks in accordance with the ANSI/UL 790 test standard. The UL classification includes a comprehensive Class A, B or C rating. This test method and resulting classification measures the external fire resistance of the roof system but does not include an investigation of fire resistance to internal sources directed at the underside of the roof system. For additional information concerning the UL 790 classification for DensDeck roof boards, consult the UL certifications directory under categories TGFU (Roofing Systems) and TGFU7 (Roofing Systems Certified for Canada).

UL 1256 Classification. DensDeck, DensDeck Prime and DensDeck DuraGuard roof boards have also been classified by UL in roof deck constructions for internal (under deck) fire exposure in accordance with the ANSI/UL 1256 Steiner Tunnel test. The UL listing includes the use of ¼" DensDeck roof boards under foam plastic insulation. For additional information concerning the UL 1256 classification for DensDeck roof boards, consult the UL certifications directory under categories TGKX (Roof Deck Constructions), TIAR (Building Units) and TIAR7 (Building Units Certified for Canada).

FM Class 1 FM Approvals. 1/4" (6.4 mm) DensDeck roof boards have passed testing under the FM Calorimeter Standard 4450 (Approval Standard for Class 1 Insulated Steel Deck Roofs) and have been approved by FM for insulated steel deck roofs when installed per FM guidelines. To achieve a Class 1 designation, the assembly must satisfy criteria for fire, wind uplift, foot traffic and hail damage resistance. For more information about FM Approvals and Class 1 assemblies, consult FM or RoofNav®, FM's tool for roofing professionals. Please note, however, that the performance of a roof depends on all components used in the roofing assembly and how the components interact.

ASTM C 1177. 5/8" (15.9 mm) DensDeck Fireguard, 5/8" (15.9 mm) DensDeck Fireguard Prime and 5/8" (15.9 mm) DensDeck Fireguard DuraGuard roof boards are manufactured to meet the "Type X" requirements of ASTM C 1177 for increased fire resistance beyond regular gypsum board.

Flame Spread and Smoke Development. When tested in accordance with ASTM E 84, UL723 and CAN/ULC-S102, DensDeck, DensDeck Prime and DensDeck DuraGuard roof boards had Flame Spread 0, Smoke Developed 0.

Long-term fire protection of roofing systems is a key concern of the design authority, code officials and building owners. DensDeck roof boards will contribute to the fire-resistant characteristics of roof assemblies over time.

"When using a low-slope membrane roof system, designers should include in their designs a suitable cover board that is consistent with an appropriate listing or approval from a code-approved testing agency. This recommendation is consistent with the guidelines already contained in The NRCA Roofing and Waterproofing Manual, Fifth Edition. Furthermore, for mechanically attached single ply membrane roof systems, designers of newly-installed roof systems are now recommended to include a noncombustible cover board that is consistent with an appropriate listing or approval from a code-approved testing agency. Examples of noncombustible cover boards include **fiberglass mat-faced gypsum boards and gypsum roof boards.**" (January 2006 NRCA/MRCA Technical Bulletin.)

See: January 2006 NRCA/MRCA Technical Bulletin: Fire Testing of Membrane Roof Systems.

Standards and Classifications – Fire Resistance *continued*

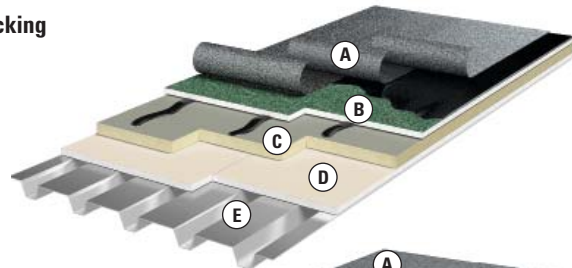
The design assemblies in this guide are presented for illustrative purposes only. It is important that you consult a design professional and the appropriate fire resistance directory or test report for complete assembly information and related information. Georgia-Pacific Gypsum does not provide architectural, engineering or roofing system services. For additional fire safety information concerning Georgia-Pacific Gypsum's products, visit www.buildgp.com/safetyinfo.

UL Classifications

The following are typical configurations with DensDeck® roof boards classified by UL for use as a fire barrier over combustible and noncombustible decks and are for illustration purposes only. Please consult UL for additional information.

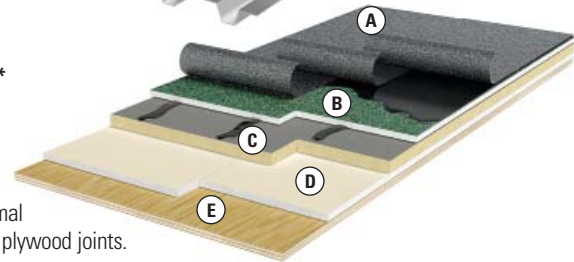
Typical UL Fire Barrier Board Classification on Noncombustible Decking

- A. UL Classified Roof Covering
- B. Min. 1/4" (6.4 mm) DensDeck® Roof Board Cover Board
- C. UL Classified (EPS) Insulation
- D. **Minimum 1/4" (6.4 mm) DensDeck Roof Board serving as an insulation thermal barrier underlayment and an acceptable code alternative to a thermal barrier.**
- E. Classified Steel Deck



Typical UL Fire Barrier Board Classification on Combustible Decking*

- A. UL Classified Roof Covering
- B. Min. 1/4" (6.4 mm) DensDeck Roof Board Cover Board
- C. UL Classified Insulation (optional)
- D. Minimum 1/4" (6.4 mm) DensDeck Roof Board serving as an insulation thermal barrier overlayment with all joints staggered a min. of 6" (152 mm) from the plywood joints.
- E. Classified Wood Deck



**Note: The UL 790 classification for DensDeck provides that the use of DensDeck roof boards as a barrier board over a combustible deck permits the use of any classified roofing system which would otherwise be limited to use over a noncombustible deck. When used, the insulation must consist of one of the types specified. For additional information, consult the UL certifications directory under category TGfU (Roofing Systems).*

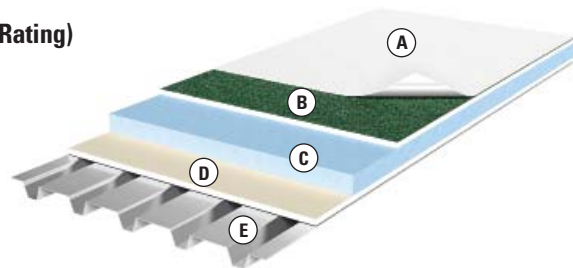
FM Approvals

DensDeck Roof Boards are typically utilized in these constructions as an insulation underlayment. In some assemblies it will be used as an insulation overlayment or cover board (1/4" (6.4 mm), 1/2" (12.7 mm) or 5/8" (15.9 mm)). In other assemblies it will serve both of these roles in the same system.

The following is a typical configuration of a roof deck for a FM Class 1 fire rating and is for illustration purposes only. Please consult FM or RoofNav (<https://www.roofnav.com>) for additional information.

Typical Configuration of DensDeck Roof Boards (Class 1 Fire Rating)

- A. Membrane (various)
- B. Minimum 1/4" (6.4 mm) DensDeck Roof Boards Overlayment
- C. Rigid Foam Insulation (including EPS)
- D. Minimum 1/4" (6.4 mm) DensDeck Roof Boards Underlayment
- E. Metal Deck



System Components, Standards and Classifications – Wind Uplift Resistance

Wind Uplift Information

Wind uplift resistance of roofing assemblies is achieved by fastening and/or adhering the roofing components to the structural deck. Uplift resistance testing may be conducted by several independent laboratories, in accordance with FM 4470 and ANSI/UL 1897 test procedures. The test results show the tested (not design) pounds per square foot (PSF) uplift resistance which has been achieved.

It is the responsibility of the roofing design authority to comply with code requirements and follow the guidelines in ASCE-7 or FM 1-28 and 1-29 to establish the appropriate design uplift resistance and safety factor. Several factors are considered to determine the design pressure required, including but not limited to, height of the building, ground roughness, exposure and importance factor. Once the design pressure is determined, the roofing assembly which meets this pressure, with the appropriate safety factor, is selected by the design authority.

Vertical Pull Resistance Over Structural Concrete Deck

The assemblies listed are a sample of the highest vertical pull values available through FM's RoofNav® utilizing DensDeck® Roof Boards. The test method used was FM 1-52.

Roof System	Attachment to Deck	PSF
Single Ply Fully Adhered	Adhered	915
Multi-Ply Hot Asphalt	Hot Asphalt	825
Multi-Ply Torched	Hot Asphalt	825
Multi-Ply Torch Cap Hot Asphalt Base	Hot Asphalt	840
Multi-Ply Torched	Adhered	810

It is important to note that the vertical pull results are for the entire roof assembly, not just the DensDeck Roof Boards. For a comprehensive list of vertical pull tests and additional information, please visit <https://www.roofnav.com>. **Actual results may vary depending on moisture (see page 19), and other factors. Georgia-Pacific Gypsum makes no representations or warranties concerning the vertical pull or uplift resistance of any roof assembly or system.**

The vertical pull test measures the uplift resistance in pounds on a four square foot test area. A 2' x 2' assembly is adhered to a concrete deck and the uplift force is divided by four to get the pounds per square foot uplift resistance.

Uplift Resistance Pressures Achieved With DensDeck® Through Independent Testing

The following are typical roofing systems with examples of assemblies evaluated by FM, UL or other labs for wind uplift resistance. These systems are presented for illustration only, and the examples of wind uplift resistance are for the entire assembly tested, not just the DensDeck® roof boards. **Actual results may vary depending on moisture (see page 19), and other factors. Georgia-Pacific Gypsum makes no representations or warranties concerning the vertical pull or uplift resistance of any roof assembly or system.**

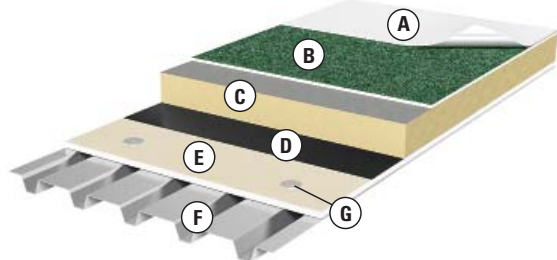
(Check membrane manufacturers' listing including FM, UL and other accredited labs for thousands of additional uplift assembly ratings with DensDeck products.)

Fastener rates shown are for the field of the roof. Additional fasteners are required for perimeter and corner areas and require either additional designer authority calculations or uplift testing. Unless otherwise noted, all screws used in tests are polymer coated, FM approved, min. 12 gauge steel and plates are 3" (76 mm) diameter corrosion resistant steel. Tests were conducted over 22 gauge steel decks. For fastener requirements in wood or structural concrete decks, refer to FM Global Property Loss Prevention Data Sheet 1-29.

System Type and Description	Wind-Uplift PSF	Product ¹	# of fasteners (4' x 8' board)
Vapor Retarder Substrate	FM 60/75/90	5/8" (15.9 mm) DensDeck	8
	FM 60/75/90	5/8" (15.9 mm) DensDeck Prime	8

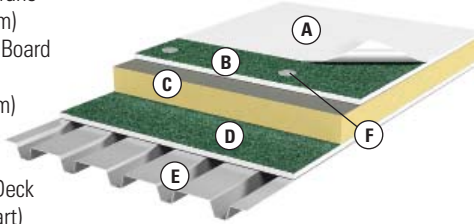
- A. Any Rated Adhered Membrane
- B. Min. 1/4" (6.4 mm) DensDeck Roof Board (optional)
- C. Insulation (optional)
- D. Vapor Retarder
- E. Min. 5/8" (15.9 mm) DensDeck Roof Board
- F. Classified Steel Deck
- G. Fastener (see chart)

Components above vapor retarder bonded with cold mastics, hot asphalt, adhesives or Insta-Stick™.



System Type and Description	Wind-Uplift PSF	Product ¹	# of fasteners (4' x 8' board)
Fully Adhered EPDM and Thermoplastic Membranes	FM 60	1/4" (6.4 mm) DensDeck®	12
	FM 60/75/90	1/4" (6.4 mm) DensDeck Prime	12
	FM 60	1/2" (12.7 mm) DensDeck	10
	FM 60/75/90	1/2" (12.7 mm) DensDeck Prime	10
	FM 60/75/90	5/8" (15.9 mm) DensDeck	8
	FM 60/75/90	5/8" (15.9 mm) DensDeck Prime	8
	FM 180*	5/8" (15.9 mm) DensDeck Prime	24
	FM 285**	1/2" (12.7 mm) DensDeck Prime	32

- A. Single ply Membrane
- B. Min. 1/4" (6.4 mm) DensDeck® Roof Board
- C. Insulation
- D. Min. 1/4" (6.4 mm) DensDeck Roof Board (optional)
- E. Classified Steel Deck
- F. Fastener (see chart)

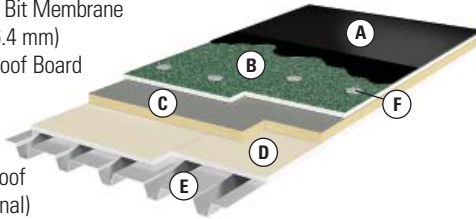


Single ply and EPDM will include both reinforced and nonreinforced.

* Carlisle Reinforced 45 mil TPO was used to achieve an FM 180 rating.
 ** Carlisle FleeceBack® was used to achieve an FM 285 rating.

System Type and Description	Wind-Uplift PSF	Product ¹	# of fasteners (4' x 8' board)
Modified Bitumen/BUR	FM 60/75/90	1/4" (6.4 mm) DensDeck	12
	FM 60/75/90	1/4" (6.4 mm) DensDeck Prime	8
	FM 60/75/90	1/2" (12.7 mm) DensDeck	9
	FM 60/75/90	1/2" (12.7 mm) DensDeck Prime	8
	FM 60/75/90	5/8" (15.9 mm) DensDeck	8
	FM 60/75/90	5/8" (15.9 mm) DensDeck Prime	8
	FM-135*	1/2" (12.7 mm) DensDeck Prime	20
	FM-225**	1/2" (12.7 mm) DensDeck Prime	24
	FM-315**	1/2" (12.7 mm) DensDeck Prime	32
	UL 150 PSF	1/2" (12.7 mm) DensDeck Prime	16
	UL 195 PSF	5/8" (15.9 mm) DensDeck Prime	16
	UL 240 PSF	5/8" (15.9 mm) DensDeck or DensDeck Prime	20

- A. BUR or Mod Bit Membrane
- B. Min. 1/4" (6.4 mm) DensDeck Roof Board
- C. Insulation
- D. Min. 1/4" (6.4 mm) DensDeck Roof Board (optional)
- E. Classified Steel Deck
- F. Fastener (see chart)

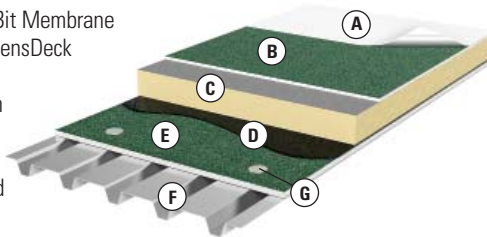


Modified bitumen without base sheet. Mod Bit is torched or set in hot asphalt. BUR is minimum 3-ply.

*Siplast SBS Mod Bit torched or set in hot asphalt was used to achieve the FM 135 rating.
 **Three plies of glass felts were set in hot asphalt to achieve the FM 225 and 315 ratings.

System Type and Description	Wind-Uplift PSF	Product ¹	# of fasteners (4' x 8' board)
EPDM, BUR or Mod Bit with Insulation Adhered with Hot Asphalt	FM 60 (EPDM)	1/2" (12.7 mm) or 5/8" (15.9 mm) DensDeck or DensDeck Prime	8
	DensDeck Roof Board (1/2" (12.7 mm) or 5/8" (15.9 mm)) and fully adhered single ply membranes FM-rated 60 PSF with insulation attached with asphalt adhesive.		
	FM 90 (BUR or Mod Bit)	1/2" (12.7 mm) or 5/8" (15.9 mm) DensDeck or DensDeck Prime	8
	DensDeck Roof Board (1/2" (12.7 mm) or 5/8" (15.9 mm)) and BUR or modified bitumen membranes FM-rated 90 PSF with insulation attached with asphalt adhesive.		

- A. EPDM, BUR or Mod Bit Membrane
- B. Min. 1/4" (6.4 mm) DensDeck Roof Board (optional)
- C. Rigid Foam Insulation
- D. Asphalt Adhesive
- E. Min. 1/2" (12.7 mm) DensDeck Roof Board
- F. Classified Steel Deck
- G. Fastener (see chart)

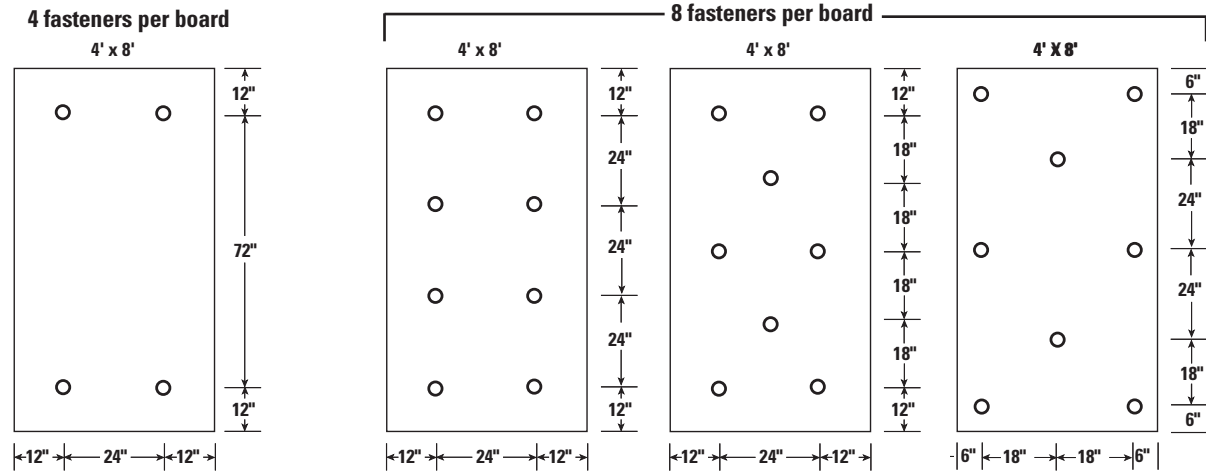


¹ DensDeck DuraGuard fastener density where applicable to the membrane system type is identical to DensDeck Prime up to FM 90 PSF.

Wind Continued

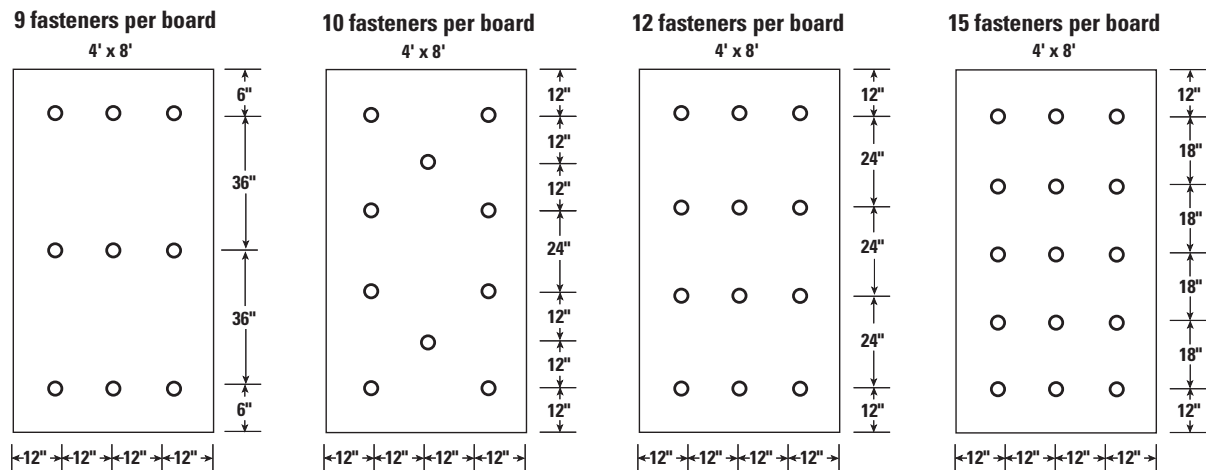
GP Fastener Patterns

Other patterns are available from system manufacturers or testing agencies.

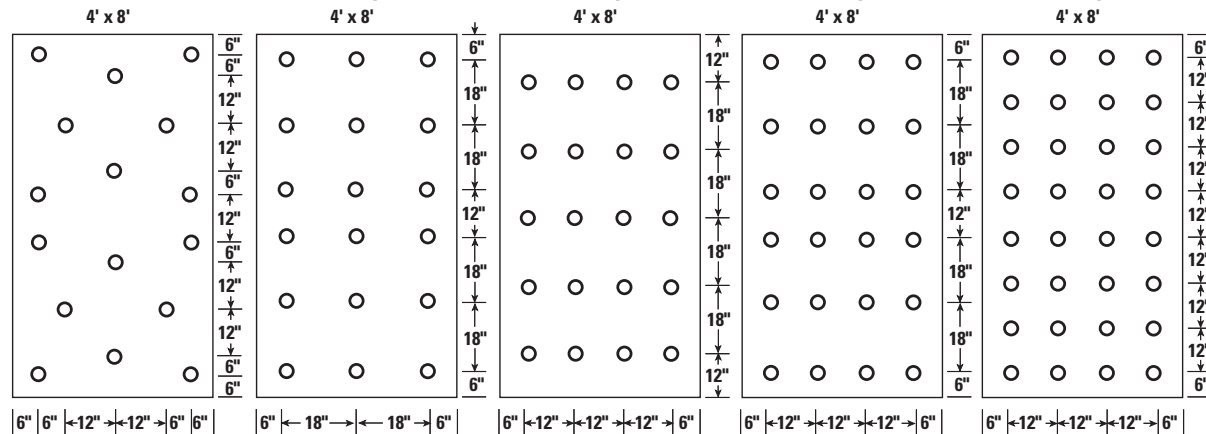


Note: Preliminary insulation or mechanically attached roof covering requires a minimum of 4 fasteners per 4' x 8' board in FM assemblies.

1/4" and 1/2" DensDeck® Prime Roof Board (Mod Bit and BUR) – Optional –



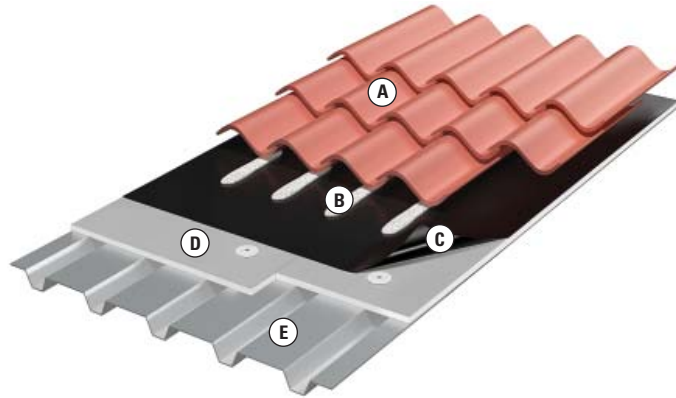
16 fasteners per board 18 fasteners per board 20 fasteners per board 24 fasteners per board 32 fasteners per board



Wind Continued

Foam Adhered Roof Tile

- A. Cement or Clay Tile
- B. Foam Adhesive Patties
- C. Self-Adhesive Secondary Water Barrier
- D. DensDeck® DuraGuard
- E. Steel Deck, 22 gauge



Static Uplift Testing: Roof Tile Foam Adhered to Membrane Over Minimum 1/4" (6.4 mm) DensDeck DuraGuard

In response to a growing construction practice of adhesive application of roof tile on commercial roofs, Georgia-Pacific Gypsum sponsored a series of critical static uplift testing in simulated roof tile assembly constructions incorporating our minimum 1/4" (6.4 mm) DensDeck DuraGuard roof board. Attached to steel deck with 16 fasteners per 4'x8' board. Those test results and partial construction details are summarized in the table below:

Thermal Barrier: Substrate	Self-Adhered, Water-Shedding Underlayment	Foam Adhesive	Tile Type	Average Ultimate Load (lbf).*	Attachment Resistant Expressed As a Moment (Mf) (ft-lbf)**
Minimum 1/4" (6.4 mm) DensDeck DuraGuard mechanically attached	Protecto Wrap™ Rainproof 40	PolyFoam	Cement Monier (S Type, High Profile)	149.8	81.3
Minimum 1/4" (6.4 mm) DensDeck DuraGuard	Protecto Wrap (R-40)	PolyFoam	Monier, Medium Profile	139.6	75.7
Minimum 1/4" (6.4 mm) DensDeck DuraGuard	Protecto Wrap (R-40)	PolyFoam	Monier, Medium Profile	172.2	94.3
Minimum 1/4" (6.4 mm) DensDeck DuraGuard	PolyGlass® Polystick™ TU Plus	PolyFoam	Monier (S Type, High Profile)	166.7	90.9
Minimum 1/4" (6.4 mm) DensDeck DuraGuard	PolyGlass Polystick TU Plus	PolyFoam	Monier, Medium Profile	131.2	70.5
Minimum 1/4" (6.4 mm) DensDeck DuraGuard	PolyGlass Polystick TU Plus	PolyFoam	Monier, Low Flat Profile	205.8	113.7
Minimum 1/4" (6.4 mm) DensDeck DuraGuard	Protecto Wrap (R-40) Rainproof 40	PolyFoam	Hanson S Type (High Profile)	142.4	76.1
Minimum 1/4" (6.4 mm) DensDeck DuraGuard	Protecto Wrap (R-40)	PolyFoam	Hanson, Medium Profile	139.6	70.0
Minimum 1/4" (6.4 mm) DensDeck DuraGuard	Protecto Wrap (R-40)	PolyFoam	Clay Altusa, Clay Tile S Type	110.1	66.9

*The maximum resistance load achieved expressed as an ultimate load.

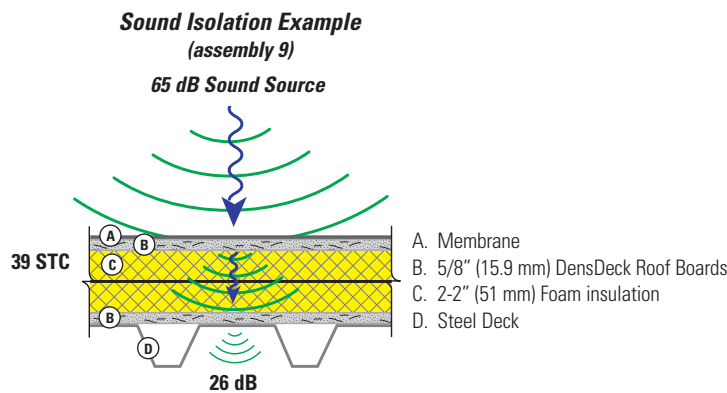
** The attachment resistance expressed as a moment as provided by the adhesive bond between the tile and underlayment.

Standards and Classifications – Sound Control

To block unwanted entry of sound through a roof assembly, multiple layers of DensDeck® Roof Boards will help efficiently keep outside sound outside. Whether around airports, in urban environments or to keep equipment noise from disrupting the occupants of a building, DensDeck can effectively contribute to sound isolation.

Sound Transmission Class (STC), measured in decibels, is the weighted average of the drop in sound intensity measured in a range of frequencies from 80 to 5,000 Hz across a barrier. The sound level outside is reduced by the STC number and if the result is close to or below the background, interior sound level, it will not be heard or will not be disruptive.

An Outdoor Indoor Transmission Class (OITC) rating is a single number calculated in accordance with standard ASTM E 1332 using the Transmission Loss measured at 18 one-third octave bands from 80 Hz to 4000 Hz. The rating is most appropriate for comparing the performance of exterior facade elements including roofs exposed to typical transportation noise sources.



Sound Source	Decibels
Jet take-off, rock concert	120
Chainsaw	110
Lawn mower, truck, tractor	90
Freeway traffic	70
Office (background)	40-50

The following table summarizes results from sound testing conducted on steel deck assemblies with DensDeck Roof Boards. The tests were conducted using a modified version of ASTM E 90 and E413, and the results are based on characteristics, properties and performance of materials and systems obtained under controlled test conditions. Actual results may vary.

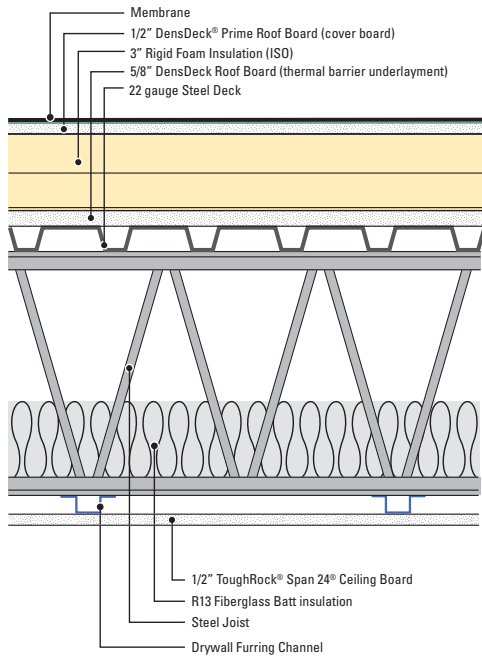
Sound Testing of Steel Deck Roof Assemblies Tested for STC

	STC	Underlayment	Insulation	Coverboard	Membrane	System Attachment
1	28	None	6" (152 mm) ISO	None	None	Mechanical
2	28	None	3" (76 mm) ISO	None	None	Mechanical
3	29-30	None	6" (152 mm) XPS (Extruded)	None	None	Mechanical
4	36	5/8" (15.9 mm) DensDeck Roof Board	3" (76 mm) ISO	1/2" (12.7 mm) DensDeck® Prime Roof Board	EPDM	Mechanical/EPDM-Adh.
5	36	5/8" (15.9 mm) DensDeck Roof Board	3" (76 mm) ISO	1/4" (6.4 mm) DensDeck Prime Roof Board	EPDM	Mechanical/EPDM-Adh.
6	38	5/8" (15.9 mm) DensDeck Roof Board	3" (76 mm) ISO	1/4" (6.4 mm) DensDeck Prime Roof Board	EPDM	All components adhered
7	38	5/8" (15.9 mm) DensDeck Roof Board	8" (203 mm) ISO	5/8" (15.9 mm) DensDeck Prime Roof Board	None	Mechanical
8	39	5/8" (15.9 mm) DensDeck Roof Board	8" (203 mm) ISO	5/8" (15.9 mm) DensDeck Prime Roof Board	None	All components adhered
9	39	5/8" (15.9 mm) DensDeck Roof Board	4" (101.6 mm) ISO	5/8" (15.9 mm) DensDeck Prime Roof Board	SBS Mod Bit	Mechanical/ Mod Bit-Torched
10	41	5/8" (15.9 mm) DensDeck Roof Board	6" (152 mm) ISO	Two: 5/8" (15.9 mm) DensDeck Roof Board 5/8" (15.9 mm) DensDeck Prime Roof Board	None	Mechanical
11	41	5/8" (15.9 mm) DensDeck Roof Board	6" (152 mm) ISO 1/2" (12.7 mm) HD Fiberboard	One: 5/8" (15.9 mm) DensDeck Prime Roof Board	None	Mechanical
12	41	5/8" (15.9 mm) DensDeck Roof Board	6" (152 mm) EPS (Extruded)	Two: 5/8" (15.9 mm) DensDeck Roof Board 5/8" (15.9 mm) DensDeck Prime Roof Board	None	Mechanical

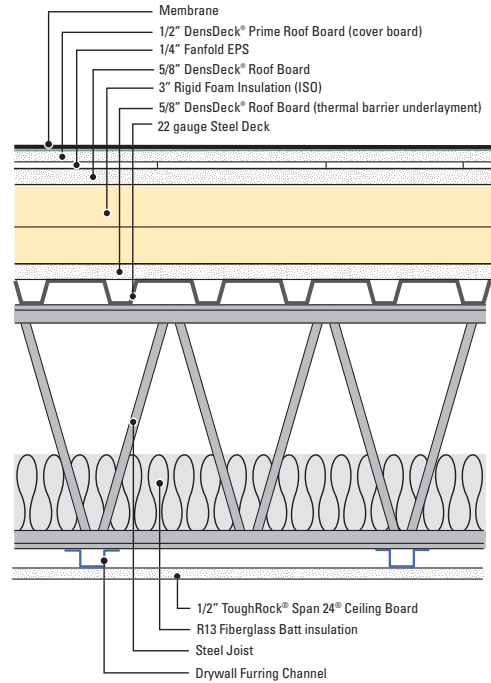
*See website for more details and assembly drawings.

Sound Control Illustrations

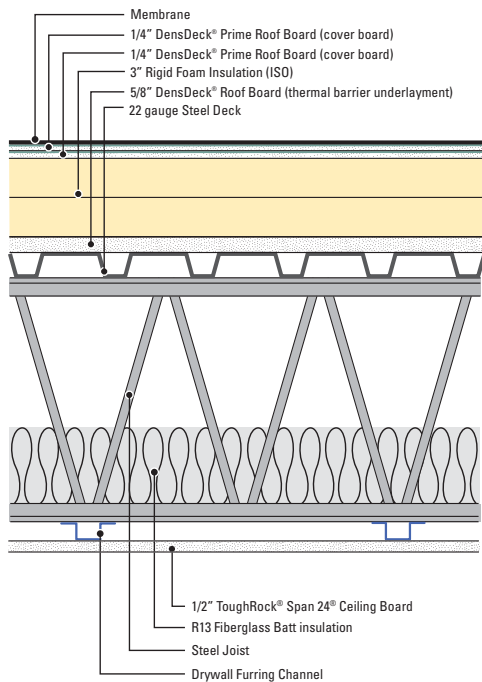
STC 56/OITC 42



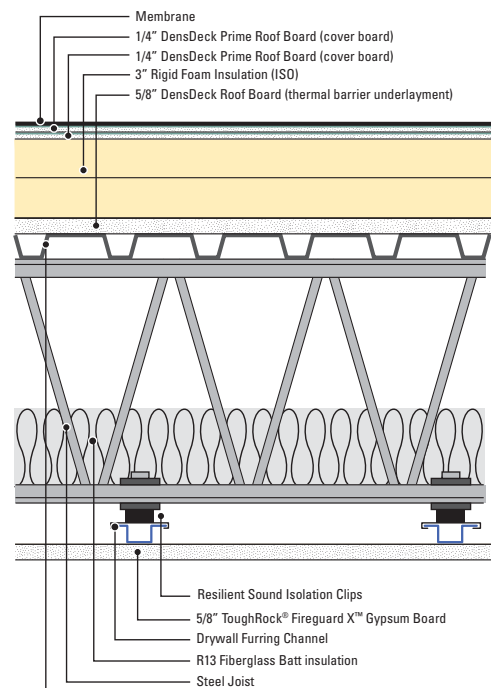
STC 57/OITC 43



STC 56/OITC 41



STC 58/OITC 43

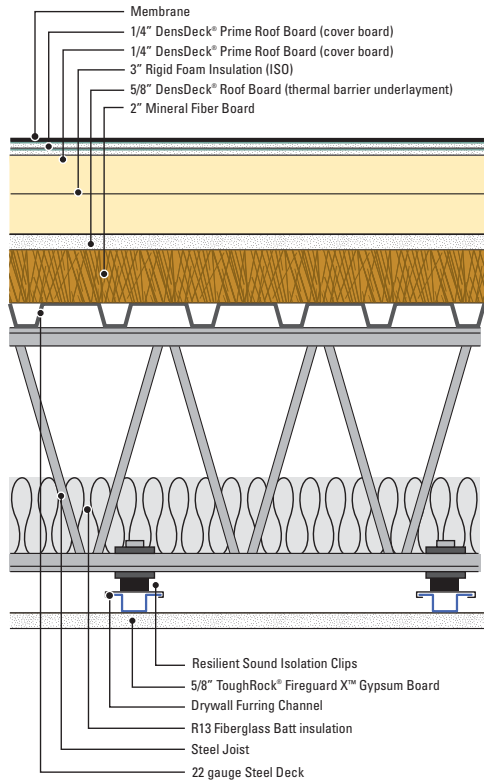


Tests per ASTM E 90 and ASTM E 413, were conducted in 2011 at Riverbank Acoustical Laboratories. Results are based on characteristics, properties and performance of materials and systems obtained under controlled test conditions. Actual results may vary.

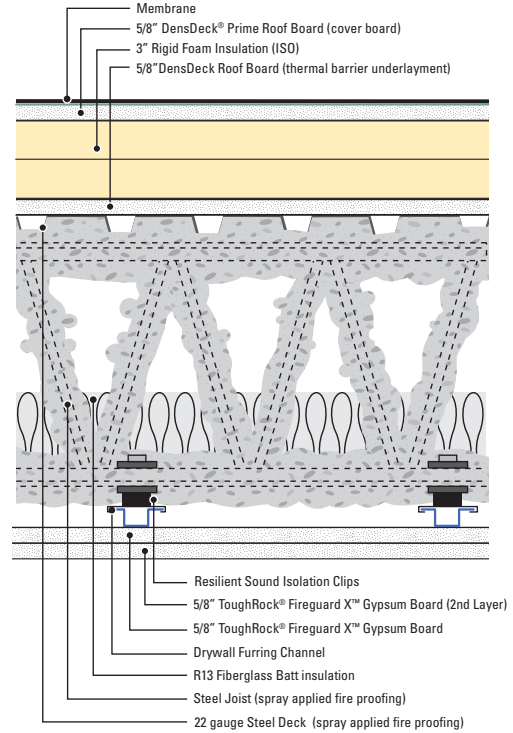
Assemblies are presented for illustration only. It is important that you consult a design professional for assembly information. Georgia-Pacific Gypsum does not provide architectural or engineering services.

Sound Control Illustrations continued

STC 59/OITC 44



STC 61/OITC 49



Tests per ASTM E 90 and ASTM E 413, were conducted in 2011 at Riverbank Acoustical Laboratories. Results are based on characteristics, properties and performance of materials and systems obtained under controlled test conditions. Actual results may vary.

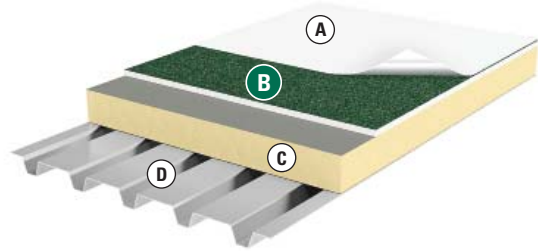
Assemblies are presented for illustration only. It is important that you consult a design professional for assembly information. Georgia-Pacific Gypsum does not provide architectural or engineering services.

Applications

The following are typical examples of roofing system applications with DensDeck® roof boards and are presented for illustration only. Please consult with the designer, system manufacturer or other design authority for use and installation of any application. Georgia-Pacific Gypsum does not provide roofing design services and makes no warranties or representation with respect to any particular system or any components or materials other than DensDeck roof boards. It is the responsibility of the system manufacturer or design authority to determine the suitability of DensDeck roof boards, or the use of other materials with DensDeck roof boards, for any particular application.

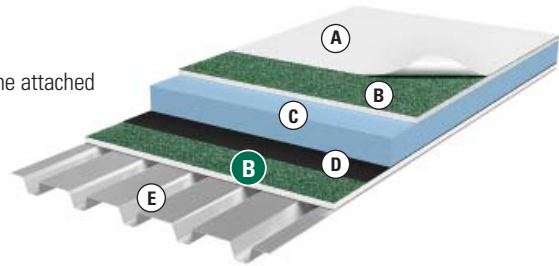
Cover Board – DensDeck® Prime preferred for adhered membrane. DensDeck preferred for mechanically attached membrane.

- A. Membrane
- B. Minimum 1/4" (6.4 mm) DensDeck® Roof Boards placed directly below the roofing membrane. In this application the product provides the primary support for the roofing membrane and protects insulation.
- C. Rigid Foam Insulation
- D. Any Structural Deck



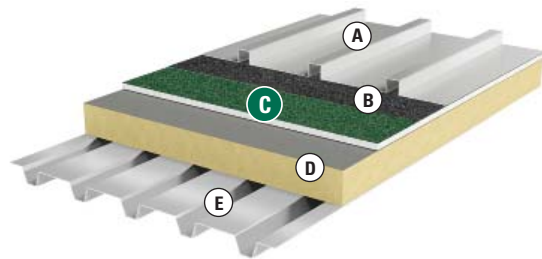
Substrate for Vapor Barrier – DensDeck Prime preferred.

- A. Membrane
- B. Minimum 1/4" (6.4 mm) DensDeck Roof Boards fastened to deck. Membrane attached with cold mastics, hot asphalt or adhesives.
- C. Rigid Foam Insulation
- D. Vapor Retarder
- E. Any structural deck



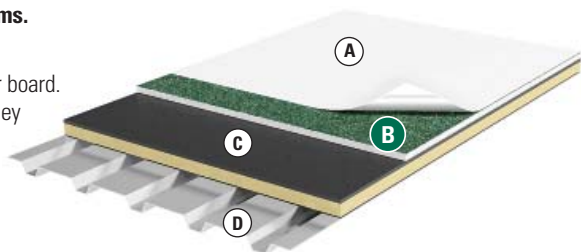
Metal Roof Thermal Barrier – DensDeck® DuraGuard preferred.

- A. Standing Seam Metal Roof
- B. Secondary Water Barrier
- C. Minimum 1/4" (6.4 mm) DensDeck Roof Boards provides a thermal barrier in conjunction with a standing-seam metal or tile roofing system while providing support for hail resistance and noise reduction.
- D. Insulation (optional)
- E. Metal Deck



Roof Recover Board – DensDeck Prime preferred for adhered systems.

- A. Membrane
- B. Minimum 1/4" (6.4 mm) DensDeck Roof Boards utilized as a roof recover board. Recover boards are placed over the existing membrane surface where they function as a separator and support layer between the old roof and a new roofing membrane.
- C. Existing Roof Assembly
- D. Any Structural Deck

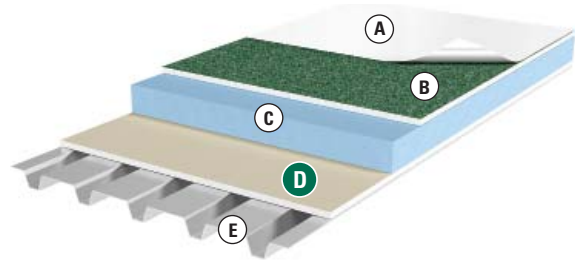


The highlighted green circle is intended to call attention to the recommended DensDeck board for that particular application.

Applications continued

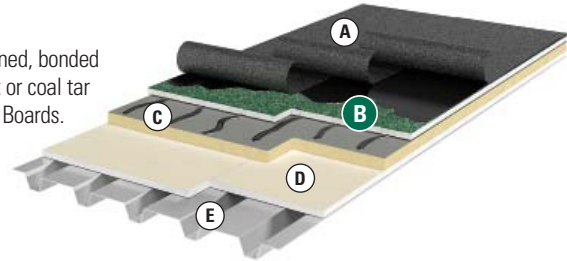
Thermal Barrier - DensDeck® preferred

- A. Membrane
- B. Minimum 1/4" (6.4 mm) DensDeck Roof Board
- C. Polystyrene Insulation
- D. Minimum 1/4" (6.4 mm) DensDeck Roof Boards provide a thermal barrier installed directly to metal deck for both expanded and extruded polystyrene insulation.
- E. Metal Deck



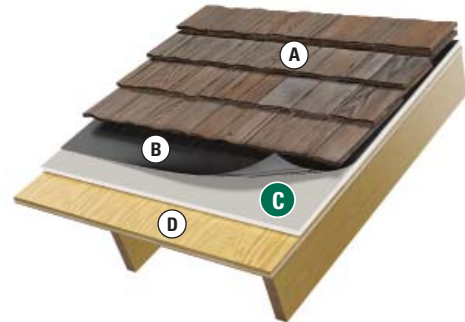
Ribbon/Spot Mopping – DensDeck® Prime preferred.

- A. Asphaltic Membrane
- B. Minimum 1/4" (6.4 mm) DensDeck® Roof Boards may be mechanically fastened, bonded with mastic or adhesives or partially hot mopped to foam insulation. Asphalt or coal tar built-up roofing systems may then be mopped directly to the DensDeck Roof Boards. **Ribbon or spot mopping is the recommended application.**
- C. Rigid Insulation
- D. Minimum 1/4" (6.4 mm) DensDeck Roof Board
- E. Any Structural Deck



Wood Shake/Shingle Underlayment

- A. Wood Shake/Shingles
- B. Organic Felt
- C. Minimum 1/4" (6.4 mm) DensDeck Roof Board as a wood shake/shingle underlayment on a combustible deck assembly to achieve a UL Class A fire rating
- D. Combustible Deck

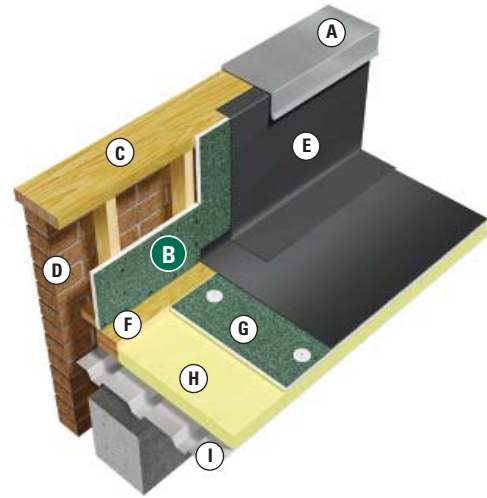


The highlighted green circle is intended to call attention to the recommended DensDeck board for that particular application.

Applications continued

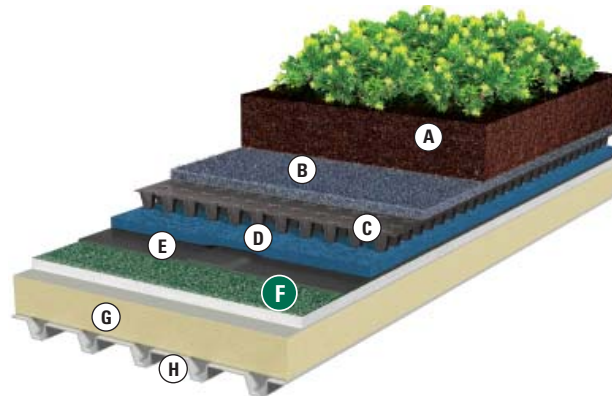
Parapet Wall Substrate – DensDeck® Prime Roof Board preferred.

- A. Wall Cap
- B. Minimum 5/8" (15.9 mm) DensDeck® Fireguard® Prime Roof Boards fastened 8" (203 mm) o.c. to wood or metal framing.
- C. Parapet Wall Framing
- D. Exterior Finish
- E. Adhered Flashing Membrane
- F. Nailers
- G. DensDeck or DensDeck Prime Roof Board
- H. Rigid Foam Insulation
- I. Any Structural Deck



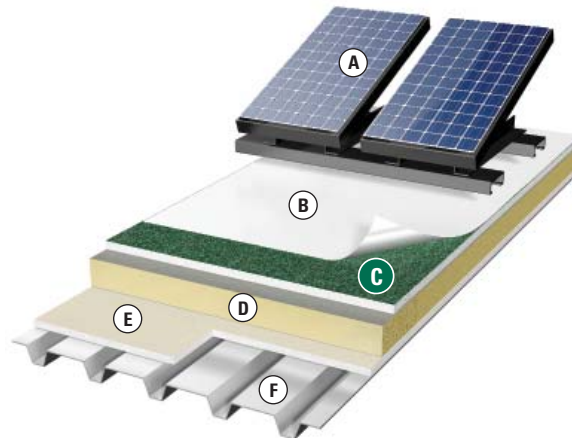
Vegetative "Green" Roof

- A. Growing Medium and Plants
- B. Moisture Retention Mat
- C. Drainage Layer
- D. Protection Fabric/Root Barrier
- E. Waterproofing Membrane
- F. Minimum 1/2" (12.7 mm) DensDeck Prime Roof Board
- G. Insulation
- H. Any Structural Deck



Photovoltaic Roofing System

- A. PV Panels
- B. Roofing Membrane
- C. Minimum 1/4" (6.4 mm) DensDeck Prime Roof Board
- D. Insulation
- E. DensDeck (optional)
- F. Any Structural Deck



The highlighted green circle is intended to call attention to the recommended DensDeck board for that particular application.

Physical Properties

DensDeck® Roof Board

Properties	1/4" (6.4 mm)	1/2" (12.7 mm)	5/8"(15.9 mm)
Thickness, nominal	1/4" (6.4 mm) ± 1/16" (1.6 mm)	1/2" (12.7 mm) ± 1/32" (0.8 mm)	5/8" (15.9 mm) ± 1/32" (0.8 mm)
Width, standard	4' (1219 mm) ± 1/8" (3 mm)	4' (1219 mm) ± 1/8" (3 mm)	4' (1219 mm) ± 1/8" (3 mm)
Length, standard	8' (2438 mm) ± 1/4" (6.4 mm)	8' (2438 mm) ± 1/4" (6.4 mm)	8' (2438 mm) ± 1/4" (6.4 mm)
Weight nominal, lbs./sq. ft. (Kg/m ²) ⁷	1.2 (5.9)	2.0 (9.8)	2.5 (12.2)
Surfacing	Fiberglass mat	Fiberglass mat	Fiberglass mat
Flexural Strength ¹ , parallel, lbf. min. (N)	≥40 (178)	≥80 (356)	≥100 (444)
Flute Spanability ²	2-5/8" (67 mm)	5" (127 mm)	8" (203 mm)
Permeance ³ , perms (ng/Pa•S•m ²)	>50 (>2850)	>35 (>1995)	>32 (>1824)
R Value ⁴ , ft ² •°F•hr/BTU (m ² •K/W)	.28	.56	.67
Linear Variation with Change in Temp., in/in °F (mm/mm/C°)	8.5x10 ⁻⁶ (15.3x10 ⁻⁶)	8.5x10 ⁻⁶ (15.3x10 ⁻⁶)	8.5x10 ⁻⁶ (15.3x10 ⁻⁶)
Linear Variation with Change in Moisture	6.25x10 ⁻⁶	6.25x10 ⁻⁶	6.25x10 ⁻⁶
Water Absorption ⁵ , % max	<10.0	<10.0	<10.0
Compressive Strength ⁶ , psi nominal	900	900	900
Surface Water Absorption, grams, nominal	<2.5	<2.5	<2.5
Flame Spread, Smoke Developed (ASTM E 84, UL 723, CAN/ULC-S102)	0/0	0/0	0/0
Fire Classification	UL Classified FM Approvals See page 4	UL Classified FM Approvals See page 4	UL Classified FM Approvals See page 4
Bending Radius	5' (1524 mm)	8' (2438 mm)	12' (3658 mm)

DensDeck® Prime Roof Board

Properties	1/4" (6.4 mm)	1/2" (12.7 mm)	5/8"(15.9 mm)
Thickness, nominal	1/4" (6.4 mm) ± 1/16" (1.6 mm)	1/2" (12.7 mm) ± 1/32" (0.8 mm)	5/8" (15.9 mm) ± 1/32" (0.8 mm)
Width, standard	4' (1219 mm) ± 1/8" (3 mm)	4' (1219 mm) ± 1/8" (3 mm)	4' (1219 mm) ± 1/8" (3 mm)
Length, standard	4' (1219 mm) & 8' (2438 mm) ± 1/4" (6.4 mm)	4' (1219 mm) & 8' (2438 mm) ± 1/4" (6.4 mm)	4' (1219 mm) & 8' (2438 mm) ± 1/4" (6.4 mm)
Weight nominal, lbs./sq. ft. (Kg/m ²) ⁷	1.2 (5.9)	2.0 (9.8)	2.5 (12.2)
Surfacing	Fiberglass mat with non-asphaltic coating	Fiberglass mat with non-asphaltic coating	Fiberglass mat with non-asphaltic coating
Flexural Strength ¹ , parallel, lbf. min. (N)	≥40 (178)	≥80 (356)	≥100 (444)
Flute Spanability ²	2-5/8" (66.7 mm)	5" (127 mm)	8" (203 mm)
Permeance ³ , perms (ng/Pa•S•m ²)	>30 (>1710)	>23 (>1300)	>17 (>970)
R Value ⁴ , ft ² •°F•hr/BTU (m ² •K/W)	.28	.56	.67
Linear Variation with Change in Temp., in/in °F (mm/mm/C°)	8.5x10 ⁻⁶ (15.3x10 ⁻⁶)	8.5x10 ⁻⁶ (15.3x10 ⁻⁶)	8.5x10 ⁻⁶ (15.3x10 ⁻⁶)
Linear Variation with Change in Moisture	6.25x10 ⁻⁶	6.25x10 ⁻⁶	6.25x10 ⁻⁶
Water Absorption ⁵ , % max	<10.0	<10.0	<10.0
Compressive Strength ⁶ , psi nominal	900	900	900
Surface Water Absorption, grams, nominal	<2.0	<2.0	<2.0
Flame Spread, Smoke Developed (ASTM E 84, UL 723, CAN/ULC-S102)	0/0	0/0	0/0
Fire Classification	UL Classified FM Approvals See page 4	UL Classified FM Approvals See page 4	UL Classified FM Approvals See page 4
Bending Radius	4' (1219 mm)	6' (1829 mm)	8' (2438 mm)

¹ Tested in accordance with ASTM C 473, method B.

² Tested in accordance with ASTM E 661.

³ Tested in accordance with ASTM E 96 (dry cup method).

⁴ Tested in accordance with ASTM C 518 (heat flow meter).

⁵ Specified values per ASTM C 1177.

⁶ Tested in accordance with ASTM C 473.

⁷ Represents approximate weight for design and shipping purposes. Actual weight may vary based on manufacturing location and other factors.

Physical Properties *continued*

DensDeck® DuraGuard Roof Board

Properties	1/4" (6.4 mm)	1/2" (12.7 mm)	5/8" (15.9 mm)
Thickness, nominal	1/4" (6.4 mm) ± 1/16" (1.6 mm)	1/2" (12.7 mm) ± 1/32" (0.8 mm)	5/8" (15.9 mm) ± 1/32" (0.8 mm)
Width, standard	4' (1219 mm) ± 1/8" (3 mm)	4' (1219 mm) ± 1/8" (3 mm)	4' (1219 mm) ± 1/8" (3 mm)
Length, standard	4' (1219 mm) and 8' (2438 mm) ± 1/4" (6.4 mm)	4' (1219 mm) and 8' (2438 mm) ± 1/4" (6.4 mm)	4' (1219 mm) and 8' (2438 mm) ± 1/4" (6.4 mm)
Weight nominal, lbs./sq. ft. ⁷	1.6 (7.8)	2.0 (9.8)	2.5 (12.2)
Surfacing	Fiberglass mat Durable, low perm coating	Fiberglass mat Durable, low perm coating	Fiberglass mat Durable, low perm coating
Flexural Strength ¹ , parallel, lbf. min. (N)	≥40 (178)	≥80 (356)	≥100 (444)
Flute Spanability ²	2-5/8" (66.67 mm)	5" (127 mm)	8" (203 mm)
Permeance ³ , perms (ng/Pa•S•m ²)	<2 (<114)	<2 (<114)	<2 (<114)
R Value ⁴ , ft ² •°F•hr/BTU (m ² •K/W)	.28	.56	.67
Linear Variation with Change in Temp., in/in °F (mm/mm/°C)	8.5x10 ⁻⁶ (15.3x10 ⁻⁶)	8.5x10 ⁻⁶ (15.3x10 ⁻⁶)	8.5x10 ⁻⁶ (15.3x10 ⁻⁶)
Linear Variation with Change in Moisture	6.25x10 ⁻⁶	6.25x10 ⁻⁶	6.25x10 ⁻⁶
Water Absorption ⁵ , % max	<10.0	<10.0	<10.0
Compressive Strength ⁶ , psi nominal	1500	900	900
Surface Water Absorption, grams, nominal	<1.0	<1.0	<1.0
Flame Spread, Smoke Developed (ASTM E 84, UL 723, CAN/ULC-S102)	0/0	0/0	0/0
Fire Classification	UL Classified FM Approvals See page 4	UL Classified FM Approvals See page 4	UL Classified FM Approvals See page 4
Bending Radius	8' (2438 mm)	12' (3658 mm)	16' (4877 mm)

¹ Tested in accordance with ASTM C 473, method B.

² Tested in accordance with ASTM E 661.

³ Tested in accordance with ASTM E 96 (dry cup method).

⁴ Tested in accordance with ASTM C 518 (heat flow meter).

⁵ Specified values per ASTM C 1177.

⁶ Tested in accordance with ASTM C 473.

⁷ Represents approximate weight for design and shipping purposes. Actual weight may vary based on manufacturing location and other factors.

MOLD RESISTANCE. When tested, as manufactured, in accordance with ASTM D 3273, DensDeck® Roof Boards have scored a 10, the highest level of performance for mold resistance under the ASTM D 3273 test method. The score of 10, in the ASTM D 3273 test, indicates no mold growth in a 4-week controlled laboratory test. The mold resistance of any building product when used in actual job site conditions may not produce the same results as were achieved in the controlled, laboratory setting. No material can be considered mold proof. For additional information, go to www.buildgp.com/safetyinfo.

Recommendations and Limitations for Use

The following recommendations and limitations together with the delivery, storage, handling and other guidelines contained in this guide are given to help assure satisfactory performance from DensDeck® Roof Boards. Failure to adhere to such recommendations and limitations may void the limited warranty provided by Georgia-Pacific Gypsum for such product. Enhanced DensDeck Prime Roof Boards (1/2" and 5/8" only) are backed with a limited warranty for up to 90 days of exposure to normal weather conditions when applied vertically on parapet walls. For additional details and warranty information for DensDeck Roof Boards, please go to www.DensDeck.com.

Georgia-Pacific Gypsum does not warrant and does not provide specifications or instructions for any specific assembly or system utilizing DensDeck Roof Boards or any component in such assemblies or systems other than DensDeck Roof Boards. Any references to assemblies or systems are for illustration or general information only. Consult with the appropriate system manufacturer and/or design authority for system specifications and instructions. In case of conflicting recommendations, system manufacturers and/or design authority's should prevail.

Design

DensDeck Roof Boards are manufactured to act with a properly designed roof system following good roofing practices. The actual use of DensDeck Roof Boards as a roofing component in any system or assembly is the responsibility of the roofing system's designing authority. Georgia-Pacific Gypsum does not offer roofing system design services and neither warrants, nor is responsible for, any systems or assemblies utilizing DensDeck Roof Boards or any component in such systems or assemblies other than DensDeck Roof Boards.

The need for a separator sheet between the DensDeck Roof Boards and the roofing membrane must be determined by the roof membrane manufacturer or roofing system designer.

Confirm any priming requirements of DensDeck Roof Boards with membrane manufacturer.

The entry of water vapor and its subsequent condensation can be detrimental to a roof's performance, including the performance of DensDeck Roof Boards. Vapor barriers can be used to control migration of water vapor into the roof system. Determining the need for a vapor barrier, its compatibility with other materials, such as structural concrete decks, and the details of its construction is the responsibility of the designer.

Application

When applying solvent-based adhesives or primers, allow sufficient time for the solvent to flash off to avoid damage to roofing components.

DensDeck, DensDeck® Prime and DensDeck® DuraGuard roof boards should not be subjected to abnormal or excessive loads or foot traffic, such as, but not limited to, use on plaza decks or under steel-wheeled equipment that may fracture or damage the panels. Provide suitable roofing system protection when required.

For hot mopping asphalt or coal tar directly to DensDeck DuraGuard roof board, follow the manufacturer's recommended system application temperature guidelines and good roofing practices.

Flood mopping DensDeck DuraGuard to a substrate followed by a flood mopped application of a membrane is not recommended. Mechanical attachment, ribbon adhesives or ribbon or spot mopping of asphalt may be acceptable methods of attachment, prior to flood mopping a membrane. Consult with system manufacturer or design authority for attachment requirements.

DensDeck Prime roof board is the preferred substrate for torch application. However, the product must be dry prior to commencing installation of torch application.

- Ensure product is dry. Ensure proper torching technique.
- Limit the heat to the roof board. Maintain a majority of the torch flame directly on the roll.
- When using DensDeck roof board in lieu of DensDeck Prime roof board, prime the surface of the DensDeck roof board and allow to dry thoroughly.
- When torching to DensDeck Prime and DensDeck DuraGuard roof boards, field priming should not be required.

Installation

Apply only as many DensDeck Roof Boards as can be covered by a roof membrane system in the same day.

Board edges and ends should be butted in typical installations. However, long, uninterrupted runs of 1/4" (6.4 mm) DensDeck Prime roof board may require slight gapping due to higher surface temperature gain. Edges should terminate over a flute and it's required that edges be supported over a channel of the roof deck.

Independent evaluations have demonstrated that hot mopping to DensDeck products is an acceptable method of bonding membranes. However, the product must be dry prior to commencing installation of hot asphalt application, with free moisture content less than 1% by weight using a moisture meter appropriately calibrated to gypsum.

- When using DensDeck® or DensDeck® Prime roof boards, Georgia-Pacific Gypsum recommends maximum asphalt application temperatures for Type III asphalt of 425°F (218°C) to 450°F (232°C). Application temperatures above these recommended temperatures may adversely affect roof system performance. Consult and follow roofing system manufacturer's specifications for full mopping applications and temperature requirements.
- Follow accepted roofing industry guidelines for full mopping applications such as EVT temperature guidelines, brooming and proper application rates of asphalt.
- For application temperatures in excess of 450°F (232°C) and for mopping of type IV asphalt, ribbon or spot mopping or the installation of a perforated base sheet are recommended methods of bonding asphalt in lieu of full mopping.

Moisture Management

Conditions beyond the control of Georgia-Pacific Gypsum, such as weather conditions, dew, leaks, application temperatures and techniques may cause adverse effects with roofing systems. **All components used in roofing systems, including DensDeck® roof boards, must be protected from exposure to moisture before, during and after installation.** Although DensDeck roof boards are engineered with fiberglass facings and high density gypsum cores, the presence of moisture can have a detrimental effect on the performance of the product and the installation of roofing membranes.

To ensure that the DensDeck roof boards remain dry prior to installation, the materials must be properly handled upon receipt. Remove the plastic packaging from all DensDeck products immediately upon receipt of delivery. Failure to remove the plastic packaging may result in entrapment of condensation or moisture, which may cause application problems that are not the responsibility of Georgia-Pacific Gypsum.

The protective, plastic factory packaging that is used to wrap DensDeck Roof Boards for shipment is intended to provide temporary protection from moisture exposure during transit only and is not intended to provide protection during storage after delivery.

DensDeck products stored outside must be stored level and off the ground and protected by a breathable waterproof covering. Provide means for air circulation around and under stored bundles of DensDeck Roof Boards. Use adequate supports to keep the bundles flat, level, and dry.

Moisture can cause blisters to form during hot mopping or torching to any substrate. Because DensDeck roof boards are relatively dense, any excess moisture will typically vaporize and travel upward into the interface between the membrane and substrate rather than dissipating within the board. In fully adhered single ply or cold mastic bitumen systems, the evaporation of solvents may be restricted and may cause solvent blisters.

Moisture accumulation may also adversely affect the structural stability or bond of roofing system components, including DensDeck roof boards, and may significantly decrease wind uplift and vertical pull resistance in the system or assembly. DensDeck roof boards exposed to moisture may need to be evaluated for structural stability to assure wind uplift performance.

Care should also be taken during installation to avoid the accumulation of moisture in the system. DensDeck Roof Boards must be covered the same day as installed. Avoid application of DensDeck roof boards during rain, heavy fog and any other conditions that may deposit moisture on the surface, and avoid the overuse of non-vented, direct-fired heaters during winter months. **When roofing systems are installed on new poured concrete or light weight concrete decks or when re-roofing over an existing concrete deck, a vapor barrier should be installed above the concrete to limit the migration of water from the concrete into the roof assembly.** Always consult the roofing system manufacturer or design authority for specific instructions for applying other products to DensDeck roof boards.

Finally, care must be taken after installation to avoid and properly manage leaks and other water accumulation. Moisture vapor movement by convection must be eliminated, and the flow of water by gravity through imperfections in the roof system must be controlled. After a leak has occurred, no condensation on the upper surface of the system should be tolerated, and the water introduced by the leak must be dissipated to the building interior in a minimum amount of time.

High-Performance Gypsum Products from Georgia-Pacific

DensDeck® Roof Board	Fiberglass mat roof board used as the ideal thermal barrier and cover board to improve resistance to wind uplift, hail, foot traffic, fire and mold in a broad range of commercial roofing applications. Look for DensDeck Prime and DensDeck DuraGuard Roof Boards, too.
DensGlass® Sheathing	The original and universal standard of exterior gypsum sheathing offers superior weather resistance, with a 12-month weather exposure limited warranty. Look for the familiar GOLD color. GREENGUARD listed for microbial resistance.
DensGlass® Shaftliner	These specially-designed panels are perfect for moisture-prone vertical or horizontal shafts, interior stairwells and area separation wall assemblies. 12-month weather exposure limited warranty. GREENGUARD listed for microbial resistance.
DensArmor Plus® Interior Panel	High-performance interior panel accelerates scheduling because it can be installed before the building is dried-in. 12-month weather exposure limited warranty. GREENGUARD and GREENGUARD Gold certified for low VOC emissions. Listed in CHPS® High Performance Product Database as a low emitting product. GREENGUARD listed for microbial resistance.
DensArmor Plus® Abuse-Resistant Interior Panel	With the same benefits as the DensArmor Plus® Interior Panel, these also offer added resistance to scuffs, abrasions and surface indentations; ideal for healthcare facilities and schools. GREENGUARD and GREENGUARD Gold certified for low VOC emissions. Listed in CHPS® High Performance Product Database as a low emitting product. GREENGUARD listed for microbial resistance.
DensArmor Plus® Impact-Resistant Interior Panel	With even greater durability than abuse-resistant panels, these have an embedded impact-resistant mesh for the ultimate resistance in high traffic areas; ideal for healthcare facilities, schools and correctional institutions. GREENGUARD and GREENGUARD Gold certified for low VOC emissions. Listed in CHPS® High Performance Product Database as a low emitting product. GREENGUARD listed for microbial resistance.
DensShield® Tile Backer	Acrylic-coated tile backer stops moisture at the surface. Lightweight and strong, they are built for speed on the job site. Conforms to requirements of 2012 IBC/IRC Code. GREENGUARD listed for microbial resistance.
ToughRock® Gypsum Board	Paper-faced line of gypsum panels for a variety of applications including interior wall and ceiling applications, abuse-resistant boards, and panels for use in fire-rated assemblies. ToughRock products are GREENGUARD and GREENGUARD Gold certified for low VOC emissions. Listed in CHPS® High Performance Product Database as a low emitting product.
ToughRock® Mold-Guard™ Gypsum Board	ToughRock Mold-Guard Gypsum Board products have enhanced mold resistance in comparison to regular ToughRock® Gypsum Boards. They are GREENGUARD and GREENGUARD Gold Certified for low VOC emissions and are listed in the CHPS® High Performance Product Database as a low emitting product. The ToughRock Mold-Guard Gypsum Board is also listed as GREENGUARD microbial resistant.



Georgia-Pacific Gypsum

U.S.A. Georgia-Pacific Gypsum LLC
Georgia-Pacific Gypsum II LLC
CANADA Georgia-Pacific Canada LP

SALES INFORMATION AND ORDER PLACEMENT

U.S.A. West: **1-800-824-7503**
Midwest: **1-800-876-4746**
South Central: **1-800-231-6060**
Southeast: **1-800-327-2344**
Northeast: **1-800-947-4497**

CANADA Canada Toll Free: **1-800-387-6823**
Quebec Toll Free: **1-800-361-0486**

TECHNICAL HOTLINE

U.S.A. and Canada: **1-800-225-6119**



TRADEMARKS –

Unless otherwise noted, all trademarks are owned by or licensed to Georgia-Pacific Gypsum LLC. LEED, USGBC and related logo are trademarks owned by the U.S. Green Building Council and are used by permission. Collaborative for High Performance Schools and CHPS are trademarks owned by Collaborative for High Performance Schools Inc. MICROSOFT is a registered trademark of Microsoft Corporation. MASTERSPEC is a registered trademark of The American Institute of Architects. REVIT is a registered trademark of Autodesk, Inc. Polyglass and Polystick are registered trademarks of the Polyglass USA (MAPEI Group). RoofNav is a registered mark of FM Approvals LLC. INSTA-STICK is a trademark of DOW Building Systems. PROTECTO/WRAP is a trademark of Protecto Wrap Company. FLEECEBACK is a trademark of Carlisle Intangible Company.

WARRANTIES, REMEDIES AND TERMS OF SALE –

For current warranty information, please go to www.gpgypsum.com and select the applicable product. All sales by Georgia-Pacific are subject to our Terms of Sale available at www.gpgypsum.com.

UPDATES AND CURRENT INFORMATION –

The information in this document may change without notice. Visit our website at www.gpgypsum.com for updates and current information.

CAUTION: For product fire, safety and use information, go to buildgp.com/safetyinfo or call 1-800-225-6119.

HANDLING AND USE –

CAUTION: This product contains fiberglass facings which may cause skin irritation. Dust and fibers produced during the handling and installation of the product may cause skin, eye and respiratory tract irritation. Avoid breathing dust and minimize contact with skin and eyes. Wear long sleeve

shirts, long pants and eye protection. Always maintain adequate ventilation. Use a dust mask or NIOSH/MSHA approved respirator as appropriate in dusty or poorly ventilated areas.

FIRE SAFETY CAUTION –

Passing a fire test in a controlled laboratory setting and/or certifying or labeling a product as having a one-hour, two-hour, or any other fire resistance or protection rating and, therefore, as acceptable for use in certain fire rated assemblies/systems, does not mean that either a particular assembly/system incorporating the product, or any given piece of the product itself, will necessarily provide one-hour fire resistance, two-hour fire resistance, or any other specified fire resistance or protection in an actual fire. In the event of an actual fire, you should immediately take any and all actions necessary for your safety and the safety of others without regard for any fire rating of any product or assembly/system.

www.gpgypsum.com