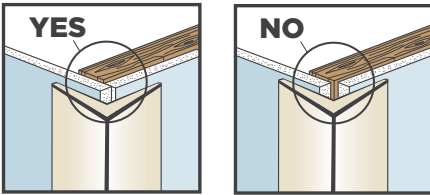


NO-COAT®

DRYWALL CORNER INSTALL GUIDE

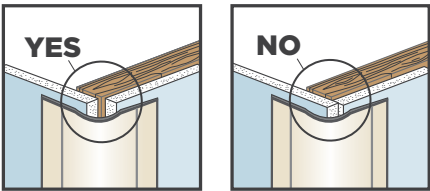
OUTSIDE 90

When installing drywall for Outside 90 corners, hang as shown. Ensure that the drywall at the corners touch, do not leave a gap.

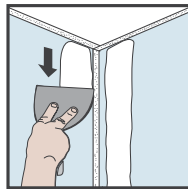


BULLNOSE

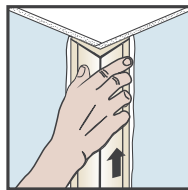
When installing drywall for Bullnose corners, hang as shown. Create an open area for the radius of the bead, ensure that drywall at the corners **do not** touch.



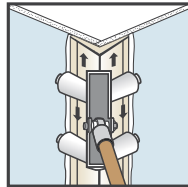
OUTSIDE 90 AND BULLNOSE



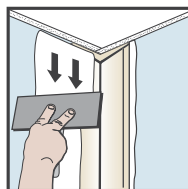
1. Using the tapping knife, apply joint compound to drywall, slightly beyond where the edge of the corner will be. Or use hopper to fill bead.



2. Place corner trim on wall, ensuring it is aligned tightly to the ceiling. Press into position.

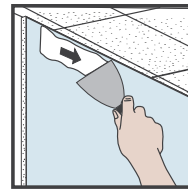


3. Use the roller to embed the trim. Or embed using even pressure, running the knife over it at a 45° angle. Use the tapping knife to skim over the edge with joint compound. Let dry thoroughly.

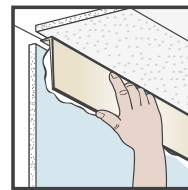


4. Use the wider finishing knife to skim over the edge again. Let dry thoroughly. Lightly sand and paint.

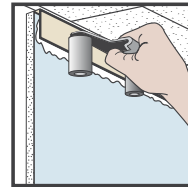
L-TRIM



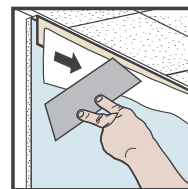
1. Use the tapping knife to apply joint compound to drywall, slightly beyond where the L-Trim will be. Or use hopper to fill bead.



2. Place L-Trim on wall. Press into position

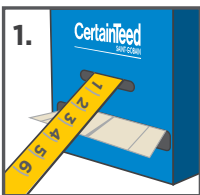


3. Use the roller to embed the trim or embed with a knife, using even pressure running at a 45° angle. Use the tapping knife to skim over the L-Trim edge with joint compound. Let dry thoroughly.

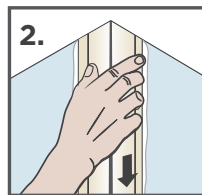


4. Use the wider finishing knife to skim over the L-Trim edge again. Let dry thoroughly. Lightly sand and paint

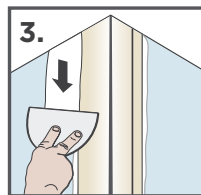
FLEXIBLE 325 AND 450



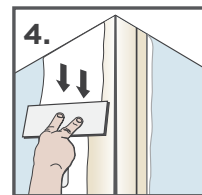
1. Open NO-COAT box and feed product through slot on side of box. Insert hook of tape measure into narrow slot to measure length of NO-COAT needed. Cut to length with scissors.



2. With 4" - 6" tapping knife, apply All-Purpose or Taping drywall compound to corner and press NO-COAT into position.



3. Remove excess mud with the same knife and let dry.



4. Use a 6" - 8" finishing knife to skim over edges of corner; let dry.



5. Sand and finish.