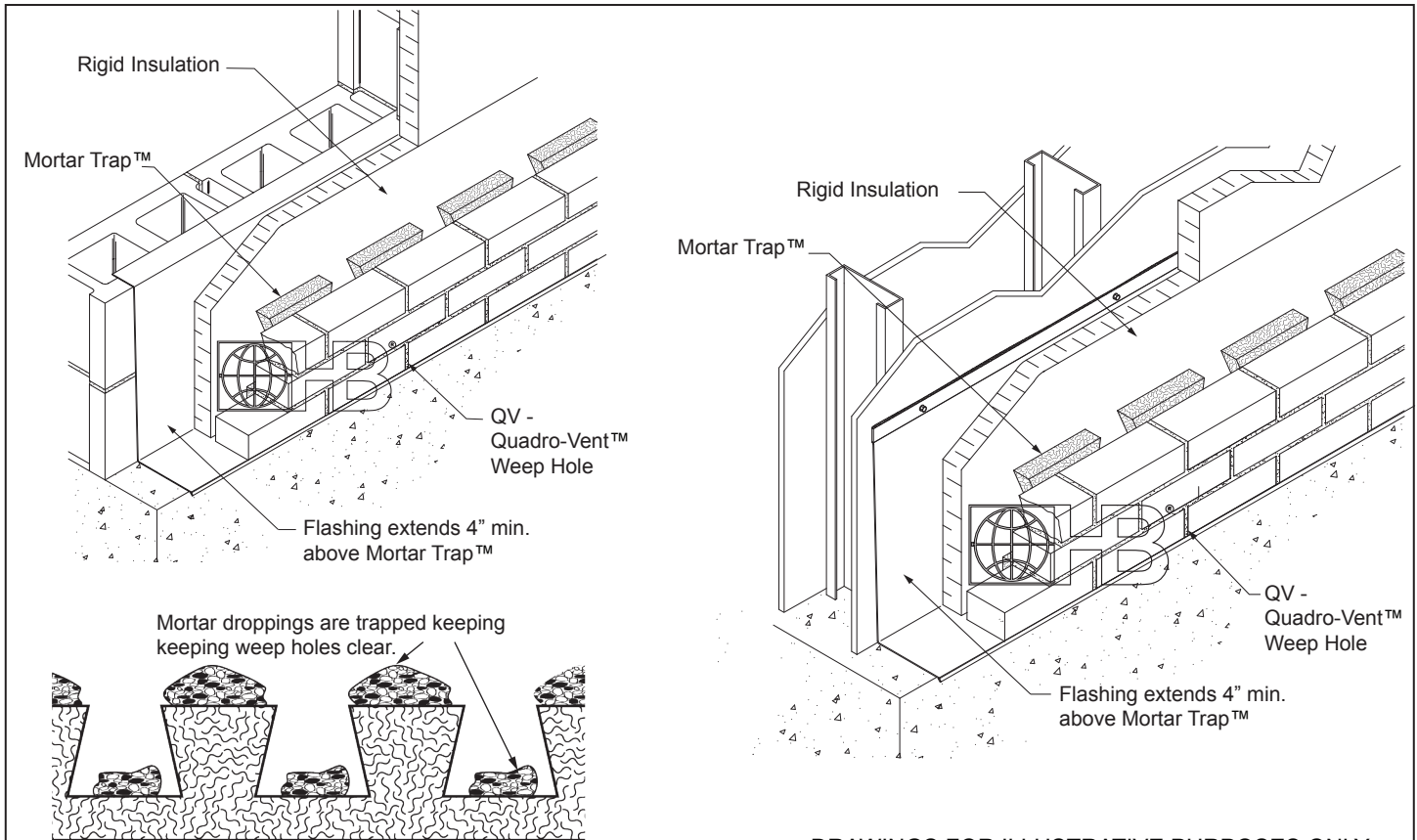


# Mortar Collection & Suspension Systems

## Mortar Trap™



DRAWINGS FOR ILLUSTRATIVE PURPOSES ONLY

**Mortar Trap™** is a mortar collection device manufactured from high-quality polypropylene strands woven into a 90% open mesh. When used with properly installed flashing, its unique shape breaks up mortar droppings and prohibits mortar from preventing the free flow of water to weep holes.

**Features:**

- High compressive strength promotes optimal product performance – will not deform or break apart
- Will not absorb or trap moisture, support mold or fungus
- Will not degrade as a result of temperature variations and is designed to last for the life of the building
- Keeps weep holes open - catches and permanently suspends mortar droppings so blockage can't occur
- Fast, easy installation - does not require fasteners or adhesives, no special skills or tools
- Slightly compressible to allow for cavity variations in the field
- UV Exposure 30 days

**Sizes:** (10" high x 5' long with 7" dovetail notches)

**THICKNESS**

□	<b>.4"</b>	x 10" x 5'	<b>250 LF/BOX</b> <b>MTRAPHB10X.4-A</b>
□	<b>1"</b>	x 10" x 5'	<b>100 LF/BOX</b> <b>MTRAPHB10X1.0-A</b>
□	<b>1.5"</b>	x 10" x 5'	<b>100 LF/BOX</b> <b>MTRAPHB10X1.5-A</b>
□	<b>2"</b>	x 10" x 5'	<b>100 LF/BOX</b> <b>MTRAPHB10X2.0-A</b>

**NOTE:** When Mortar Trap™ is used with the Quadro-Vent™ Weep Hole additional insect screening is not required.

**IMPORTANT:** Since each construction project is unique, the appropriate selection and use of any product contained herein must be determined by competent architects, engineers and other appropriate professionals who are familiar with the specific requirements of the project in question. This drawing and/or data sheet is the confidential and proprietary information of Hohmann & Barnard, Inc. and is not to be reproduced, copied or disclosed, in whole or in part, without the prior written consent of H&B.