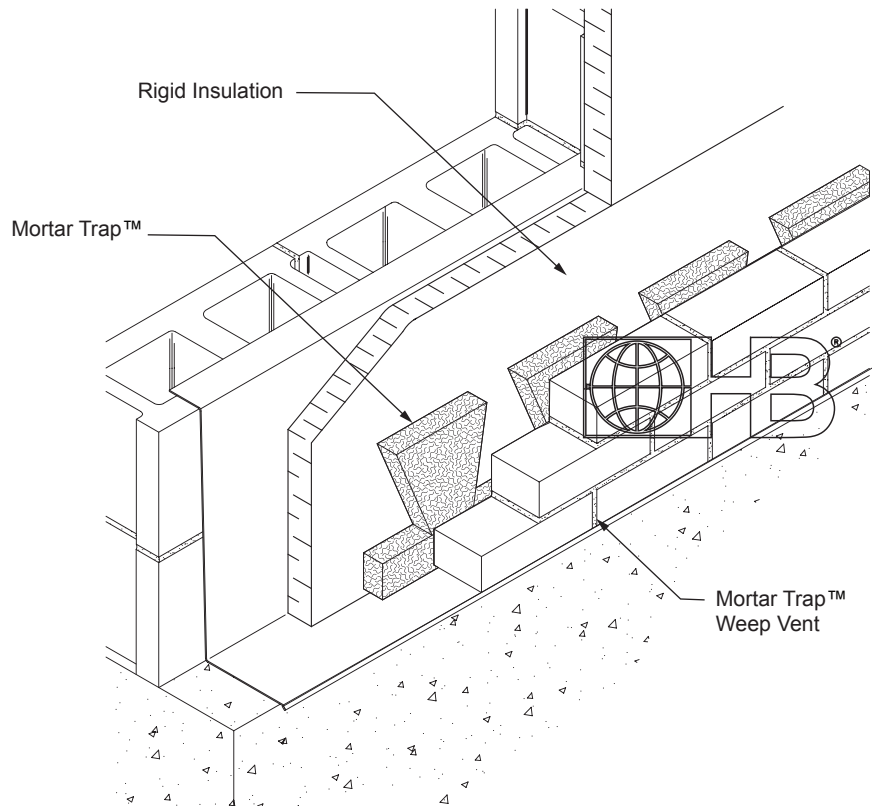


# Weep Holes/Vents

## Mortar Trap™ Weep Vents



DRAWINGS FOR ILLUSTRATIVE PURPOSES ONLY

### Mortar Trap™ Weep Vents

**Description:** A 100% re-cycled polyester plastic non-woven mesh vent which is treated with a flame retardant and ultra-violet inhibitors.

**Use:** Used in vertical joints between brick masonry in masonry wall construction to provide for the drainage of moisture and promotion of air flow. The weep vents also prevent insects from entering through the openings.

**Installation:** Install the weeps in vertical joints ( head joints) of the brick masonry every 24 inches at the flashing level for moisture evacuation and air flow. Weeps should be installed at both the top and the bottom of the wall for equalization of air pressure.

- A green product- 100% post consumer recycled material
- Qualifies for LEED credits
- Meets AATCC Test Method 30 (Anti-fungal/Anti-rot)
- Zero Microbial Activity

#### Size:

- Standard Size: 3/8" x 2 1/2" x 3 1/2"

#### Colors:

- |                                 |                               |                                |
|---------------------------------|-------------------------------|--------------------------------|
| <input type="checkbox"/> Almond | <input type="checkbox"/> Gray | <input type="checkbox"/> Tan   |
| <input type="checkbox"/> Brown  | <input type="checkbox"/> Red  | <input type="checkbox"/> White |

#### Standard Packaging:

- 200 weeps/Box
- 90 Boxes/Pallet

**IMPORTANT:** Since each construction project is unique, the appropriate selection and use of any product contained herein must be determined by competent architects, engineers and other appropriate professionals who are familiar with the specific requirements of the project in question. This drawing and/or data sheet is the confidential and proprietary information of Hohmann & Barnard, Inc. and is not to be reproduced, copied or disclosed, in whole or in part, without the prior written consent of H&B.