

# The Natural Choice for Sound Control

## SPECIFY AND INSTALL WITH CONFIDENCE

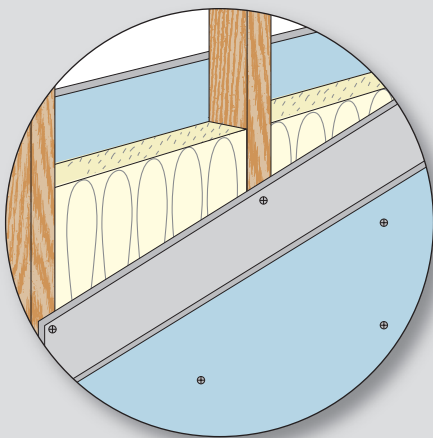
### Improved STC in Unbalanced Wall

Superior sound control for both metal and wood stud walls with Homasote installed on one side only.

#### UL Listed Wall Assemblies

- **STC 53** for Wood Stud Walls
- **STC 55** for Metal Stud Walls

**Less Material  
Less Labor  
Better Results!**



### 440 SoundBarrier for Floors

- Easy to Install Alternative to Poured Concrete
- Not Subject to Cracking
- Recognized in UL 500 Fire-Rated Floor/Ceiling Assemblies
- Independent Sound Tests Meet or Exceed STC and IIC 50 in Accordance with IBC-1207

