

# 2024-25 PRODUCT CATALOG



Check out our  
website

# **SAMMYS<sup>®</sup>**

**Warranty • Disclaimer of Warranty**

Proper fastener connection design takes in to account where and how fasteners are used. Allowance for special characteristics in materials, differences in materials, differences in types of materials being joined, unique or unusual environmental service or installation conditions and the safety factors required by anticipating normal or short term loading conditions must be considered. Due to possible differences in specifications, applications, and interpretation of results, purchasers and specifiers must make their own evaluation of the products, to determine the suitability of these products for intended use. All warranties of Buildex products, expressed or implied, including the warranties of merchantability and fitness for particular purposes are specifically excluded except for the following: Buildex will repair or replace any product which, within twelve months after sale by Buildex or its distributors, is found by Buildex to be defective in material or workmanship - normal wear and tear accepted. This is the sole warranty of Buildex and the sole remedy available to distributor or buyer. Buildex shall not be liable for any injury, loss or damage, direct, indirect, or consequential, arising out of the use of, or the inability to use, any Buildex product.

Installation Instructions .....	4 - 5
Sammys® for Wood .....	6 - 7
Sammys® for Steel.....	8 - 9
Sammy X-Press® Drill Drive™ for Steel .....	10
Sammy X-Press® for Steel.....	10 - 11
Sammys® for Concrete .....	12 - 13
Sammys Toggle™.....	14
Dektite® Pipe Flashing.....	14
Sammys Pole Tool™ and Nut Drivers .....	15
Approvals.....	16
Special Notes .....	17

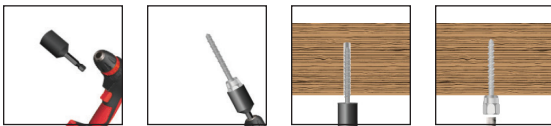
**ITW CCNA Terms and Conditions**

Visit [www.itwccna.com](http://www.itwccna.com) for terms and conditions

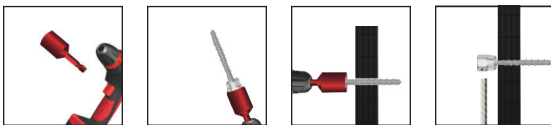
## WOOD & STEEL INSTALLATION

1. Install appropriate Sammys Nut Driver (see label on Sammys Anchor box) in a 3/8" or 1/2" portable drill and insert the anchor into the nut driver.
2. Position drill perpendicular to the structural member and begin drilling (**DO NOT USE IMPACT OR HAMMER MODE**).\*
3. When the nut driver spins freely on the cap of the screw, stop drilling and remove. Installation is now complete. *For DSTR, SWDR and SH-DSTR models add retainer nut and hand tighten (torque to 20 in-lbs max).*

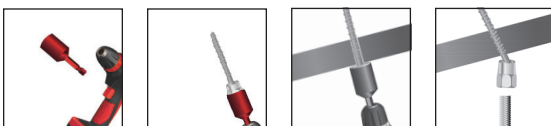
### VERTICAL INSTALLATION



### HORIZONTAL INSTALLATION



### SWIVEL INSTALLATION



\*For Sammys for Steel, use drill speeds as shown:

SAMMYS FOR STEEL	SUGGESTED DRILL SPEED (RPM)
DSTR 516, DST 516, TEK 50, DSTR 1-1/2", SWDR 1-1/2", SWDR 516, SH-TEK 5.0	0 - 1800
All Other SAMMYS for Steel	0 - 2500

## CONCRETE INSTALLATION

1. Using included 1/4" diameter carbide tip drill bit, predrill the concrete to a depth of 2", with a hammer drill or rotary hammer set on hammer mode. *For faster concrete installation, see available concrete installation kit (8122910).*
2. Install appropriate Sammys Nut Driver (see label on Sammys Anchor box) in a 3/8" or 1/2" portable drill and insert the anchor into the nut driver.
3. Position drill perpendicular to the concrete and begin drilling (**DO NOT USE IMPACT OR HAMMER MODE**).
4. When the nut driver spins freely on the cap of the screw, stop drilling, and remove. Installation is now complete.

### VERTICAL INSTALLATION



### HORIZONTAL INSTALLATION



### SWIVEL INSTALLATION



## SAMMYS NUT DRIVERS



**#14 SW**  
Red Nut Driver  
Part # 8114910



**#14**  
Black Nut Driver  
Part # 8113910



**#14 SH**  
Orange Nut Driver  
Part # 8273910

## DON'T FORGET TO USE THE CORRECT NUT DRIVER

Using the correct nut driver when installing Sammys anchors is key to ensuring reliability and efficiency on every project.

**Note:** SAMMYS nut drivers have a unique spin off feature which provides a fast and safe installation each time. When the face of the driver comes in contact with the material you are installing into, continue drilling until nut driver spins free. Installation is then complete. Warranty is void if other tools (or modified nut drivers) are used for installation.

Eye protection should be worn at all times when installing this product



View our installation videos:  
[www.sammysanchors.com/technical/installation-videos](http://www.sammysanchors.com/technical/installation-videos)

## SAMMY X-PRESS INSTALLATION

### A. METAL DECK & PURLIN

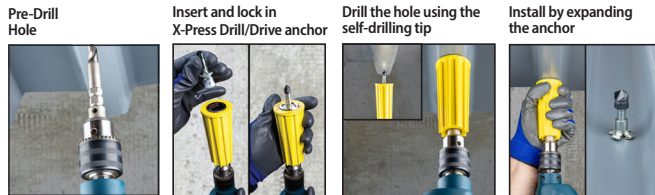
1. Insert the bit receiver with 25/64" drill bit (p/n 8152910) into the chuck of a minimum 18-volt battery operated drill.
2. Drill the 25/64" hole through the metal deck or purlin at the desired location.
3. Slide the yellow sleeve of the X-Press It 2.0 Tool over the drill bit until it connects to the receiver.
4. With the internally-threaded portion of the anchor (XP 200, XP 20, XP 35, SWXP 35, SXP 20, SXP 35, SXP 2.0, SXP 3.5) positioned inside the socket of the installation tool, secure the square base of the Sammy X-Press within the square recessed guidelines of the installation tool.
5. Fully insert the Sammy X-Press anchor through the pre-drilled hole.
6. While keeping the top of the tool flush with the metal deck or purlin, firmly hold the yellow sleeve of the X-Press-It 2.0 Tool, before pulling the trigger to install the Sammy X-Press anchor. The expandable portion of the anchor will compress and secure the anchor to the metal deck or purlin. Be sure to properly position hand to avoid injury (see installation images).

### B. STRUCTURAL CONCRETE OVER METAL DECK

(Follow steps 1-6 before pouring concrete)

### C. NON-STRUCTURAL LIGHTWEIGHT CONCRETE APPLIED OVER METAL DECK, NOT FOR USE WITH AIR DRY DENSITY GREATER THAN 35 PCF

(Follow steps 1-6 before or after the LWC has been applied)



## SAMMY X-PRESS DRILL/DRIVE™ INSTALLATION

### A. METAL DECK & PURLIN

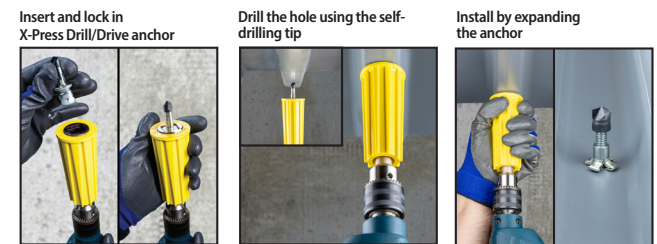
1. Insert the X-Press It 2.0 tool into the chuck of a minimum 18-volt battery operated drill. Please note, you will not be required to use the tool's internal drill bit when installing XPDD anchors.
2. With the internally-threaded portion of the anchor (XPDD 40) positioned inside the socket of the installation tool, secure the square base of the XPDD anchor within the square recessed guidelines of the installation tool.
3. Apply pressure to the drill-point of the XPDD anchor against the metal deck or purlin. **Without** holding onto the yellow handle, begin drilling into the metal deck or purlin until a hole is formed, allowing the anchor to completely pass through.
4. While keeping the top of the tool flush with the metal deck or purlin, firmly hold the yellow sleeve of the X-Press-It 2.0 Tool, before pulling the trigger to install the Sammy X-Press Drill/Drive anchor. The expandable portion of the anchor will compress and secure the anchor to the metal deck or purlin. Be sure to properly position hand to avoid injury (see installation photos).



Sammy X-PRESS Drill/Drive Anchor

### B. STRUCTURAL CONCRETE OVER METAL DECK

(Follow steps 1-4 before pouring concrete)

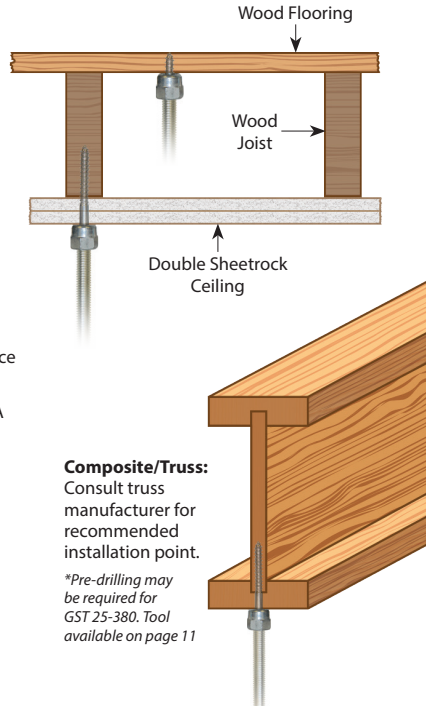
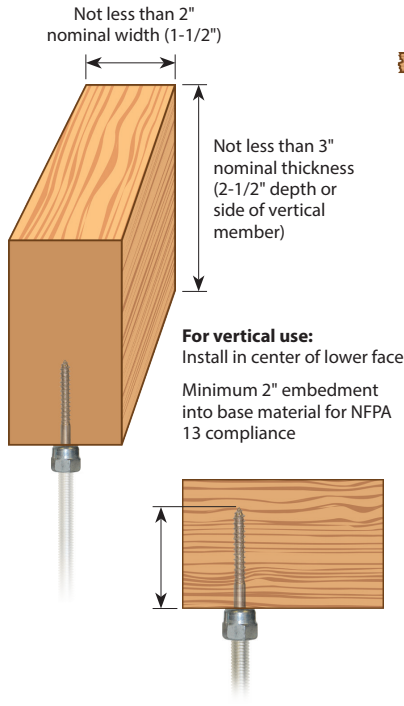


View our installation videos:  
[www.sammysanchors.com/technical/installation-videos](http://www.sammysanchors.com/technical/installation-videos)





## SAMMYS FOR WOOD – Vertical Application



## PRODUCT FEATURES

- No pre-drilling required.
- Quick to install using the Sammy Nut Driver with an 18V cordless drill.
- Saves time from traditional methods.
- Reduces installation costs.
- Assembled in the U.S.A.



View our installation videos:  
[www.sammysanchors.com/technical/installation-videos](http://www.sammysanchors.com/technical/installation-videos)



## VERTICAL MOUNT

Approvals	Rod Size	Part Number	Model	Screw Description	Ultimate Pullout (lbs)	UL Test Load (lbs)	FM Test Load (lbs)	Box Qty	Case Qty	Nut Driver
	1/4"	8002957	GST 100	1/4 x 1"	210 (7/16" OSB) 670 (3/4" Ply)			25	125	#14 Black Part # 8113910
	1/4"	8003957	GST 200	1/4 x 2"	1760 (Fir)			25	125	#14 Black Part # 8113910
	3/8"	8007957	GST 10	1/4 x 1"	210 (7/16" OSB) 670 (3/4" Ply)	300		25	125	#14 Black Part # 8113910
	3/8"	8008957	GST 20	1/4 x 2"	1760 (Fir)	850	1475	25	125	#14 Black Part # 8113910
	3/8"	8068925	GST 20-SS*	1/4 x 2"	1760 (Fir)	850		25	125	#14 Black Part # 8113910
	3/8"	8009925	GST 25-380	3/8 x 2-1/2"	2113 (Fir)	1500		25	125	#14 Black Part # 8113910
	3/8"	8010957	GST 30	1/4 x 3"	2060 (Fir)	1500	1475	25	125	#14 Black Part # 8113910
	1/2"	8013925	GST 2	1/4 x 2"	1760 (Fir)			25	125	#14 SW Red Part # 8114910
	1/2"	8015925	GST 3	1/4 x 3"	2275 (Fir)			25	125	#14 SW Red Part # 8114910

\* GST 20-SS both Cap and Screw are Stainless Steel.  
ALL products may require pre-drilling depending on wood type - consult joist manufacturer.

## SAMMYS NUT DRIVERS



#14 Black Nut Driver  
Part # 8113910



#14 SW Red Nut Driver  
Part # 8114910



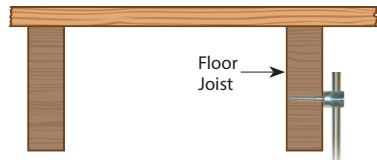
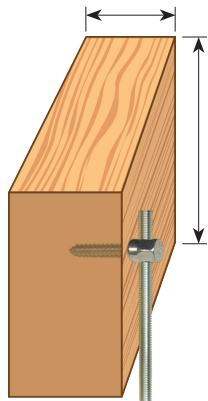
#14 SH Orange Nut Driver  
Part # 8273910

**SPECIAL NUT DRIVER SYSTEM:** The nut drivers were designed with a unique spin-off feature which provides a fast and safe installation each time. When the face of the driver comes into contact with the material you are installing into, continue drilling until nut driver spins free. Installation is then complete. Warranty requires the use of the appropriate nut driver for installations.



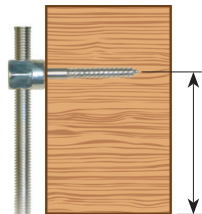
**SIDEWINDER® FOR WOOD – Horizontal Application**

Not less than 2" nominal width (1-1/2") up to 3-1/2" pipe; not less than 3" nominal width (2-1/2") 4" & 5" pipe



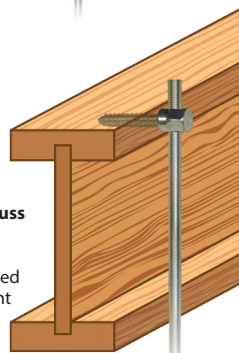
Floor Joist

Minimum 2-1/2" from bottom for branch lines. Minimum 3" from bottom for main lines. Exception: This requirement shall not apply to 2" or thicker nailing strips resting on top of steel beams.



**Composite / Truss**  
Consult truss manufacturer for recommended installation point

\*Pre-drilling may be required for SWG 25-380. Tool available on page 11



**PRODUCT FEATURES**

- No pre-drilling required.
- Quick to install using the Sammy Nut Driver with an 18V cordless drill.
- Saves time from traditional methods.
- Reduces installation costs.
- Assembled in the U.S.A.



View our installation videos:  
[www.sammysanchors.com/technical/installation-videos](http://www.sammysanchors.com/technical/installation-videos)

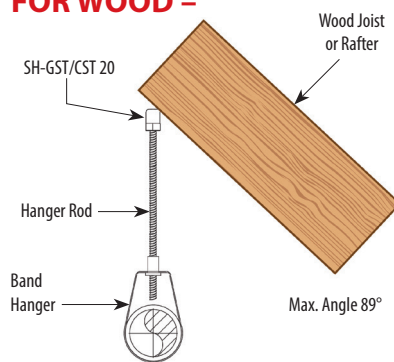
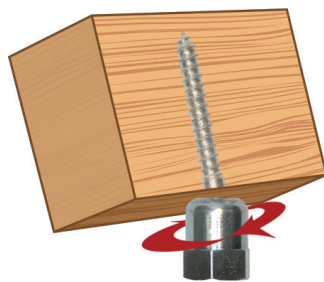


**HORIZONTAL MOUNT**

Approvals	Rod Size	Part Number	Model	Screw Description	Ultimate Shear (lbs)	UL Test Load (lbs)	Box Qty	Case Qty	Nut Driver
	3/8"	8020957	SWG 10	1/4 x 1"	622 (Fir)	300	25	125	#14 SW Red Part # 8114910
	3/8"	8021957	SWG 20	1/4 x 2"	1725 (Fir)	1050	25	125	#14 SW Red Part # 8114910
	3/8"	8022925	SWG 25-380	3/8 x 2-1/2"	2249 (Fir)	1500	25	125	#14 SW Red Part # 8114910
	3/8"	8023925	SWG 30	1/4 x 3"	1884 (Fir)	1500	25	125	#14 SW Red Part # 8114910

ALL products may require pre-drilling depending on wood type - consult joist manufacturer.

**SAMMYS SWIVEL HEAD™ FOR WOOD – Swivel Application**



**PRODUCT FEATURES**

- Eliminates distortion of threaded rod.
- Accommodates up to 3 1/2" x 12 pitch roof.
- Saves time from traditional methods.
- Reduces installation costs.
- Assembled in the U.S.A.



View our installation videos:  
[www.sammysanchors.com/technical/installation-videos](http://www.sammysanchors.com/technical/installation-videos)



**SWIVEL MOUNT**

Approvals	Rod Size	Part Number	Model	Screw Description	Ultimate Pullout (lbs)	UL Test Load (lbs)	FM Test Load (lbs)	Max. Deflection	Box Qty	Case Qty	Nut Driver
	3/8"	8139957	*SH-GST 20	1/4 x 2"	1257 (Fir)	1050	1475	17°	25	125	#14 Black Part # 8113910
	3/8"	8269957	SH-GST/CST 20	5/16 x 1-3/4"	1903 Dim. Lumber 1406 @ 45° off vertical Dim. Lumber	1500 850 @ 45°		89°	25	125	#14 SH Orange Part 8273910

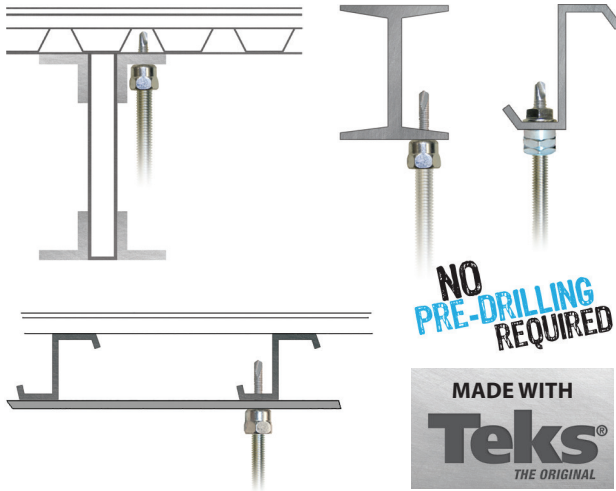
\* Will not swivel until installed with black nut driver.

ALL products may require pre-drilling depending on wood type - consult joist manufacturer.

To find a distributor near you, call 800-848-5611



## SAMMYS FOR STEEL – Vertical Application



## PRODUCT FEATURES

- Made with Teks® self-drilling fasteners — no pre-drilling required.
- Installs into steel range from 20 gauge - 1/2" thickness.
- Saves time from traditional methods.
- Reduces installation costs.
- Quick to install using the Sanny Nut Driver with an 18V cordless drill/driver.
- A standard screwgun with a depth sensitive nosepiece should be used to install Teks. For optimal fastener performance, the screwgun should be a minimum of 6 amps and have an RPM range of 0-2500 for Teks 3 and 1-1800 for Teks 5.
- Assembled in the U.S.A.



View our installation videos:  
[www.sannysanchors.com/technical/installation-videos](http://www.sannysanchors.com/technical/installation-videos)



## VERTICAL MOUNT

Approvals	Rod Size	Part Number	Model	Screw Description	Ultimate Pullout (lbs)	UL Test Load (lbs)	FM Test Load (lbs)	Min. Thick (ga)	Max. Thick (ga)	Box Qty	Case Qty	Nut Driver
	1/4"	8024957	DSTR 100 *	1/4-20 x 1" TEKS 3	1510 (20 ga.)			20	3/16"	25	125	#14 Black Part # 8113910
	1/4"	8025957	DST 100	1/4-14 x 1" TEKS 3	446 (20 ga.)			20	3/16"	25	125	#14 Black Part # 8113910
	1/4"	8026957	DST 150	1/4-14 x 1-1/2" TEKS 3	970 (16 ga.)			20	3/16"	25	125	#14 Black Part # 8113910
	1/4"	8027957	DST 200	1/4-14 x 2" TEKS 3	446 (20 ga.)			20	3/16"	25	125	#14 Black Part # 8113910
	3/8"	8038957	DSTR 1 *	1/4-20 x 1" TEKS 3	1510 (20 ga.)	1500	1475	20	3/16"	25	125	#14 Black Part # 8113910
	3/8"	8037957	DSTR 1-1/2 *	12-24 x 1-1/2" TEKS 5	1510 (3/16")	1500	1475	20	1/2"	25	125	#14 Black Part # 8113910
	3/8"	8039957	DSTR 516 *	5/16-18 x 1-1/4" TEKS 3	2200 (20 ga.)	1500	1475	20	3/16"	25	125	#14 Black Part # 8113910
	3/8"	8040957	DST 10	1/4-14 x 1" TEKS 3	446 (20 ga.) 970 (16 ga.)			20	3/16"	25	125	#14 Black Part # 8113910
	3/8"	8041957	DST 15	1/4-14 x 1-1/2" TEKS 3	446 (20 ga.) 970 (16 ga.)			20	3/16"	25	125	#14 Black Part # 8113910
	3/8"	8042957	DST 20	1/4 - 14 x 2" TEKS 3	446 (20 ga.) 970 (16 ga.)			20	3/16"	25	125	#14 Black Part # 8113910
	3/8"	8044957	DST 30	1/4-14 x 3" TEKS 3	446 (20 ga.) 970 (16 ga.)			20	3/16"	25	125	#14 Black Part # 8113910
	3/8"	8045957	DST 516	5/16-18 x 1-1/4" TEKS 3	1500 (3/16")	1500	1475	1/8"	3/16"	25	125	#14 Black Part # 8113910
	3/8"	8046957	TEK 50	12-24 x 1-1/2" TEKS 5	3125 (3/16")	1500	1475	1/4"	1/2"	25	125	#14 Black Part # 8113910
	1/2"	8031925	DST 2.0	1/4-14 x 2" TEKS 3	446 (20 ga.) 970 (16 ga.)			20	3/16"	25	125	#14 SW Red Part # 8114910

\*Retaining nut required for approvals when applicable.

## SAMMYS NUT DRIVERS



#14 Black Nut Driver  
Part # 8113910



#14 SW Red Nut Driver  
Part # 8114910



#14 SH Orange Nut Driver  
Part # 8273910

**SPECIAL NUT DRIVER SYSTEM:** The nut drivers were designed with a unique spin-off feature which provides a fast and safe installation each time. When the face of the driver comes into contact with the material you are installing into, continue drilling until nut driver spins free. Installation is then complete. Warranty requires the use of the appropriate nut driver for installations.





**SIDEWINDER® FOR STEEL – Horizontal Application**

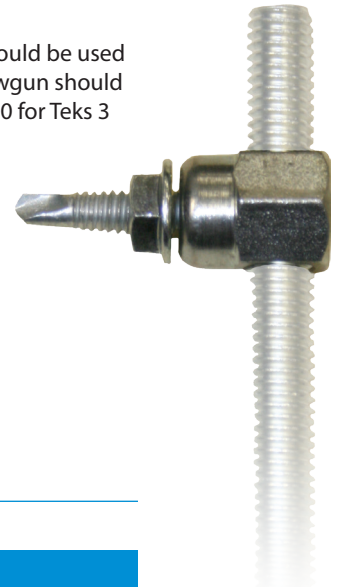


**PRODUCT FEATURES**

- Made with Teks® self-drilling fasteners - no pre-drilling required.
- Installs into steel range from 20 gauge – 1/2" thicknesses.
- A standard screwgun with a depth sensitive nosepiece should be used to install Teks. For optimal fastener performance, the screwgun should be a minimum of 6 amps and have an RPM range of 0-2500 for Teks 3 and 1-1800 for Teks 5.
- Saves time from traditional methods.
- Reduces installation costs.
- Quick to install using the Sammys Nut Driver with an 18V cordless drill/driver.
- Assembled in the U.S.A.



View our installation videos:  
[www.sammysanchors.com/technical/installation-videos](http://www.sammysanchors.com/technical/installation-videos)



**HORIZONTAL MOUNT**

Approvals	Rod Size	Part Number	Model	Screw Description	Ultimate Shear (lbs)	UL Test Load (lbs)	FM Test Load (lbs)	Min. Thick (ga)	Max. Thick (ga)	Box Qty	Case Qty	Nut Driver
	3/8"	8050957	SWD 10	1/4-14 x 1" TEKS 3	1477 (16 ga.)			16	3/16"	25	125	#14 SW Red Part # 8114910
	3/8"	8052957	SWD 20	1/4-14 x 2" TEKS 3	1477 (16 ga.)			16	3/16"	25	125	#14 SW Red Part # 8114910
	3/8"	8055957	SWDR 1*	1/4-20 x 1" TEKS 3	1900 (20 ga.)	1500	1475	20	3/16"	25	125	#14 SW Red Part # 8114910
	3/8"	8054957	SWDR 1-1/2*	12-24 x 1-1/2" TEKS 5	2375 (3/16")	1500	1475	3/16"	1/2"	25	125	#14 SW Red Part # 8114910
	3/8"	8056957	SWDR 516*	5/16-18 x 1-1/4" TEKS 3	2480 (20 ga.)	1500	1475	20	3/16"	25	125	#14 SW Red Part # 8114910

\*Includes retaining nut.

**SAMMYS SWIVEL HEAD™ FOR STEEL – Swivel Application**



**PRODUCT FEATURES**

- Eliminates distortion of threaded rod in sloped roof applications.
- Accommodates 3-1/2 x 12 pitch.
- Installs into angled z-purlin; allows threaded rod to hang plumb.
- Allows 17° deflection from vertical.
- Assembled in the U.S.A.



View our installation videos:  
[www.sammysanchors.com/technical/installation-videos](http://www.sammysanchors.com/technical/installation-videos)



**SWIVEL MOUNT**

Approvals	Rod Size	Part Number	Model	Screw Description	Ultimate Pullout (lbs)	UL Test Load (lbs)	FM Test Load (lbs)	Min. Thick (ga)	Max. Thick (ga)	Box Qty	Case Qty	Nut Driver
	3/8"	8137957	SH-DSTR 1*	1/4-20 x 1" TEKS 3	3220 (3/16")	1500	1475	20	3/16"	25	125	#14 Black Part # 8113910
	3/8"	8268957	SH-TEK 50	12-24 x 1-5/8" TEKS 5	2368 (1/2" steel vertical) 1306 (45° off vertical) 2281 (3/16" HSS) 1585 (3/16" HSS 45° off vertical)	1500 (vertical) 4" 850 (45° off vertical) 2-1/2"		3/16"	1/2"	25	125	#14 SH Orange Part # 8273910

\* Does not comply with ROHS requirements / Includes retaining nut.



## SAMMY X-PRESS® DRILL/DRIVE™



### PRODUCT FEATURES

- The **Sammy X-Press Drill/Drive™** expands to provide direct vertical attachment in steel deck or purlin (22 ga - 1/8").
- Streamlined Installation: Simplify your workflow and save time with the built-in drill bit feature. Say goodbye to the hassle of using a separate drill bit, dealing with dull drill bits, or searching for the right one. Sammy X-Press makes installation seamless and efficient.
- Rapid Installation: Effortlessly attach threaded rod into metal deck and thin gauge purlin using the Sammy X-Press It™ 2.0 Tool. No retaining nut required, ensuring a streamlined and user-friendly process.
- Ideal for applications where access to the back of the installed anchor is prohibited, ie. metal roof deck, tubular steel, or vapor barrier fabric.
- Assembled in the U.S.A.



View our installation videos:  
[www.sammysanchors.com/technical/installation-videos](http://www.sammysanchors.com/technical/installation-videos)

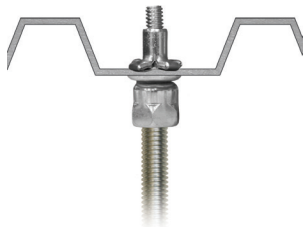


### DRILL/DRIVE VERTICAL MOUNT

Approvals	Rod Size	Part Number	Model	Description	UL Test Load (lbs)	UL Load Rating (lbs)	UL Min Thick (ga.)	Max. Thick (ga.)	Box Qty	Case Qty	Application
	3/8"	8151957	XPDD 40	Sammy X-Press Drill/Drive 40	850 (22 ga.)	850 (2-1/2" Pipe) (22 ga.)	22	1/8"	25	125	Metal Deck
					1000 (20 ga.)	1500 (4" Pipe) (16 ga.)	16				
					1500 (16 ga.)	185 (22 ga. Luminaire)	22				
						250 (20 ga. Luminaire)	20				
						283 (22 ga. Conduit & Cable)	22				
		500 (16 ga. Conduit & Cable)	16								



## SAMMY X-PRESS® – Vertical Application



### PRODUCT FEATURES

- The **Sammy X-Press** expands to provide direct vertical attachment in steel deck or purlin (22 ga – 1/8").
- Installs in seconds with Sammy X-Press It™ 2.0 Tool, saving time & installation costs.
- Use in applications where access to the back of the installed fastener is prohibited, ie. metal roof deck, tubular steel, or vapor barrier fabric.
- Less jobsite material needed.
- No retaining nut required.
- Provides design flexibility.
- Assembled in the U.S.A.

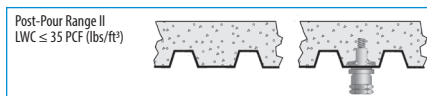


View our installation videos:  
[www.sammysanchors.com/technical/installation-videos](http://www.sammysanchors.com/technical/installation-videos)



### VERTICAL MOUNT

Approvals	Rod Size	Part Number	Model	Description	Ultimate Pullout (lbs)	UL Load Rating (lbs)	UL Min Thick (ga)	FM Test Load (lbs)	FM Min Thick (ga)	Max. Thick (ga)	Box Qty	Case Qty	Application		
	1/4"	8181922	XP 200	Sammy X-Press 200	1146 (22 ga)	185 (Luminaire)	22			1/8"	25	125	Metal Deck		
						250 (Luminaire)	16								
	3/8"	8150922	XP 20	Sammy X-Press 20	1146 (22 ga)	850 (2 1/2" Pipe)	22	940 (2" Pipe)	22	1/8"	25	125	Metal Deck		
						185 (Luminaire)	16							1475 (4" Pipe)	12
						250 (Luminaire)	22								
	3/8"	8150922	XP 20	Sammy X-Press 20	1146 (22 ga)	850 (2 1/2" Pipe)		Pre-Pour Structural Concrete @ 3000 psi			25	125	Metal Deck (Pre-Pour)		
								Post-Pour Range II LWC ≤ 35 PCF (lbs/ft³)					Metal Deck (Post-Pour)		
	3/8"	8153922	XP 35	Sammy X-Press 35	1783 (16 ga)	1500 (4" Pipe)	16	940 (2" Pipe)	22	1/8"	25	125	Purlin		
						185 (Luminaire)	16							1475 (4" Pipe)	12
						250 (Luminaire)	16								
						416 (Conduit & Cable)	16								



**SAMMY X-PRESS  
SIDEWINDER™ –  
Horizontal  
Application**

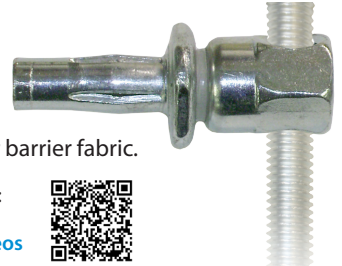


**PRODUCT FEATURES**

- The Sammy X-Press Sidewinder expands to provide horizontal attachment in 16 ga - 3/16" steel - purlin, tubular steel.
- Use in applications where access to the back of the installed fastener is prohibited; ie. metal roof deck, tubular steel, or vapor barrier fabric.
- Assembled in the U.S.A.



View our installation videos:  
[www.sammysanchors.com/technical/installation-videos](http://www.sammysanchors.com/technical/installation-videos)



**HORIZONTAL MOUNT**

Approvals	Rod Size	Part Number	Model	Description	Ultimate Shear (lbs)	UL Load Rating (lbs)	UL Min Thick (ga)	Max. Thick (ga)	Box Qty	Case Qty	Application
	3/8"	8293957	SWXP35	Sidewinder X-Press 35	1798 (16 ga)	1250 (3½" Pipe) 80 (Luminaire) 416 (Conduit & Cable)	16	1/8"	25	125	Metal Deck/Purlin

**SAMMY X-PRESS  
SWIVEL –  
Swivel  
Application**



**PRODUCT FEATURES**

- The Sammy X-Press Swivel allows you to hang plumb in extreme roof pitches: - 89° in z-purlin - 45° in metal deck for 12/12 pitch.
- Use in applications where access to the back of the installed fastener is prohibited, ie. metal roof deck, tubular steel, or vapor barrier fabric.
- Assembled in the U.S.A.



View our installation videos:  
[www.sammysanchors.com/technical/installation-videos](http://www.sammysanchors.com/technical/installation-videos)



**SWIVEL MOUNT**

Approvals	Rod Size	Part Number	Model	Description	Ultimate Pullout (lbs)	UL Load Rating (lbs)	UL Min Thick (ga)	FM Test Load (lbs)	FM Min Thick (ga)	Max. Thick (ga)	Box Qty	Case Qty	Application
	3/8"	8294922	SXP 20	Swivel X-Press 20	1061 (22 ga Vert) 829 (45° Off Vert)	750 (2" Pipe) 170 Vertical (Luminaire) 80 @ 45° (Luminaire) 283 Vertical (Conduit & Cable) 233 @ 45° (Conduit & Cable)	22	635 (2" Pipe)	22	1/8"	25	125	Metal Deck/Purlin
	3/8"	8295922	SXP 35	Swivel X-Press 35	1675 (16 ga Vert) 1558 (89° Off Vert)	1250 (3½" Pipe) 250 Vertical (Luminaire) 80 @ 90° (Luminaire) 500 Vertical (Conduit & Cable) 333 @ 89° (Conduit & Cable)	16	635 (2" Pipe)	22	1/8"	25	125	Metal Deck/Purlin
†	1/2"	8272957	SXP 2.0	Swivel X-Press 2.0	1061 (22 ga Vert) 829 (45° Off Vert)					1/8"	25	125	Metal Deck/Purlin
†	1/2"	8271957	SXP 3.5	Swivel X-Press 3.5	1675 (16 ga Vert) 1558 (89° Off Vert)					1/8"	25	125	Metal Deck/Purlin

† Approved for Sway Bar Bracing Only

**PRODUCT FEATURES**

- The Universal Installation Tool allows for an easy, seamless installation of all X-Press anchors.
- In-Line ergonomic handle makes installing overhead easier than ever.
- Installs directly onto a standard drill, no drill bit required.



View our installation videos:  
[www.sammysanchors.com/technical/installation-videos](http://www.sammysanchors.com/technical/installation-videos)

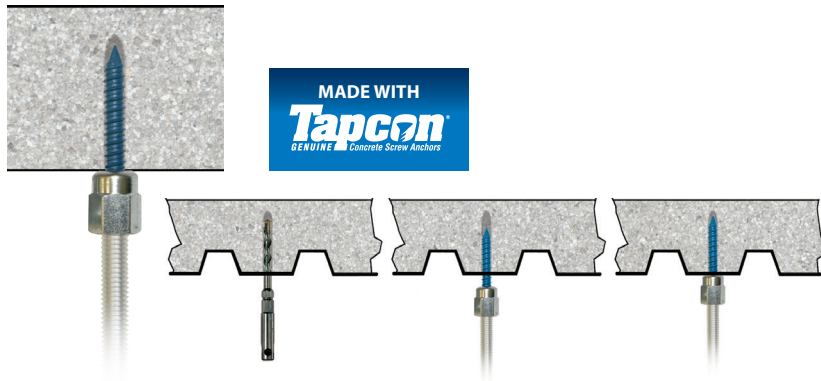


**SAMMY X-PRESS IT™ 2.0**

Part Number	Model	Description	Qty
8196910	UXPIT 2.0	Sammy X-Press It™ 2.0 Universal Installation Tool	1
8152910	XPDB	25/64" Drill Bit	1



## SAMMYS FOR CONCRETE – Vertical Application



### PRODUCT FEATURES

- Easy two step process (Drill hole & drive Sammys concrete anchor).
- ¼" pre-drilled pilot hole required.
- Concrete Installation Tool available for a one tool installation process.
- Assembled in the U.S.A.



View our installation videos:  
[www.sammysanchors.com/technical/installation-videos](http://www.sammysanchors.com/technical/installation-videos)

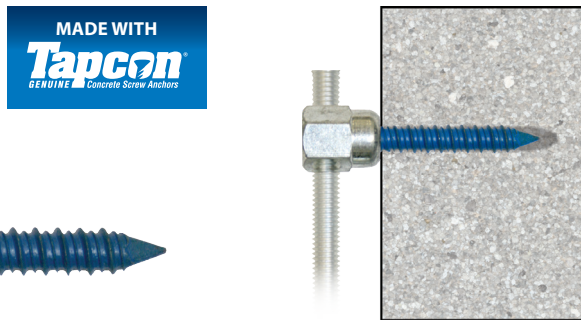


### VERTICAL MOUNT

Approvals	Rod Size	Part Number	Model	Screw Description	Ultimate Pullout (lbs)*	FM Test Load (lbs)	Box Qty	Case Qty	Nut Driver
	1/4"	8058957	CST 200	5/16 x 1-3/4"	2400		25	125	#14 Black Part # 8113910
	3/8"	8059957	CST 20	5/16 x 1-3/4"	2400	1475	25	125	#14 Black Part # 8113910
	1/2"	8060925	CST 2	5/16 x 1-3/4"	2400		25	125	#14 SW Red Part # 8114910

All products tested in 3000 PSI concrete.

## SIDEWINDER® FOR CONCRETE – Horizontal Application



### PRODUCT FEATURES

- Easy two step process (Drill hole & drive Sammys concrete anchor).
- ¼" pre-drilled pilot hole required.
- Concrete Installation Tool available for a one tool installation process.
- Assembled in the U.S.A.



View our installation videos:  
[www.sammysanchors.com/technical/installation-videos](http://www.sammysanchors.com/technical/installation-videos)



### HORIZONTAL MOUNT

Approvals	Rod Size	Part Number	Model	Screw Description	Ultimate Shear (lbs)*	FM Test Load (lbs)	Box Qty	Case Qty	Nut Driver
	3/8"	8061957	SWC 20	5/16 x 1-3/4"	2450	1475	25	125	#14 SW Red Part # 8114910

All products tested in 3000 PSI concrete.

## SAMMYS NUT DRIVERS



#14 Black Nut Driver  
Part # 8113910

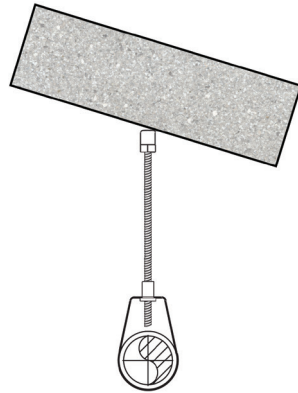
#14 SW Red Nut Driver  
Part # 8114910

#14 SH Orange Nut Driver  
Part # 8273910

**SPECIAL NUT DRIVER SYSTEM:** The nut drivers were designed with a unique spin-off feature which provides a fast and safe installation each time. When the face of the driver comes into contact with the material you are installing into, continue drilling until nut driver spins free. Installation is then complete. Warranty requires the use of the appropriate nut driver for installations.



**SAMMYS FOR CONCRETE – Swivel Application**



**PRODUCT FEATURES**

- Installs vertically and swivels up to 89° in wood & concrete structures.
- Eliminates distortion of threaded rod.
- 1/4" pre-drilled pilot hole required.
- Concrete installation tool available for a one piece installation process.
- Assembled in the U.S.A.



View our installation videos:  
[www.sammysanchors.com/technical/installation-videos](http://www.sammysanchors.com/technical/installation-videos)



**SWIVEL MOUNT**

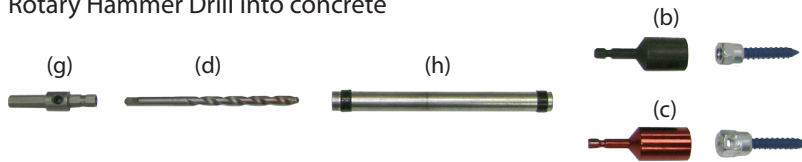
Approvals	Rod Size	Part Number	Model	Screw Description	Ultimate Pullout (lbs)*	Box Qty	Case Qty	Nut Driver
	3/8"	8269957	SH-GST/CST 20	5/16 x 1-3/4"	2537 in 3000 psi concrete 1459 @ 45° off vertical in 3000 psi concrete 2852 in 6000 psi concrete 1636 @ 45° off vertical in 6000 psi concrete	25	125	#14 SH Orange Part 8273910

All products tested in 3000 PSI concrete.

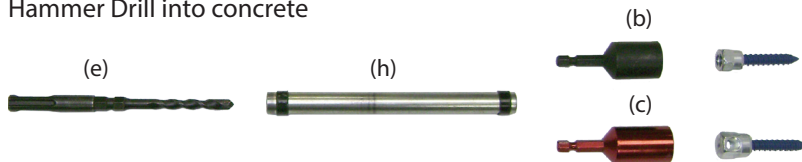
Note: UL Listed for wood – see page 5

**CONCRETE / WOOD INSTALLATION KIT**

Rotary Hammer Drill into concrete



Hammer Drill into concrete



**CONCRETE INSTALLATION KIT**

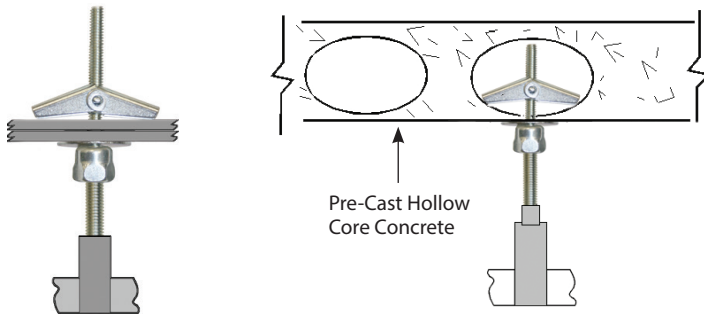
Part Number	Description	Each Qty
<b>8122910</b>	<b>(a) Concrete Installation Kit</b> – Kit includes the following items:	<b>1</b>
8113910	(b) #14 Black Nut Driver	1
8114910	(c) #14 SW Red Nut Driver	1
8116910*	(d) #250 Bit (1/4")	1
8117910	(e) SDS Bit (1/4")	1
8118910*	(f) 7/32 Wood Bit	1
8120910*	(g) HEX 250 Bit Receiver (1/4")	1
8098910*	(h) SL 250 Sleeve	1

\* Can only be purchased with complete kit.





## SAMMYS TOGGLE™ – Application



## PRODUCT FEATURES

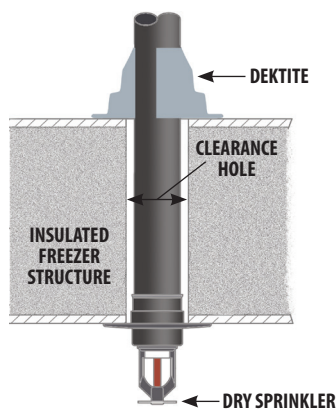
- Provides a quick and easy attachment of threaded rod to hollow substrates, especially when access to the back of the substrate is limited or restricted.
- Engineered to support 3/8" rod securely in place, ensuring stability and reliability in various installations.
- Utilize the black nut driver for straightforward and hassle-free installation.
- Ideal for light fixtures and low voltage cable lines.

## INSTALLATION STEPS

1. Pre-drill a 5/8" hole with a regular drill or hole saw.
2. Insert SST screw into #14 black nut driver. With wing nut and washer on bolt, insert wing nut through surface, and begin installation.
3. When bolt is secure and nut driver spins free, stop drill motor and remove.

Rod Size	Part Number	Model	Screw Description	Ultimate Pullout (lbs)	Box Qty	Case Qty	Nut Driver
3/8"	8064925	SST 30	1/4 x 3"	450 (Lath & Plaster) 404 (2 Layers 5/8 Drywall)	25	125	#14 Black Part # 8113910

## DEKTITE® PIPE FLASHING – Application



**STAY UP TO CODE!**  
with a quicker, more efficient way to flash your refrigeration/freezer units.

## PRODUCT FEATURES

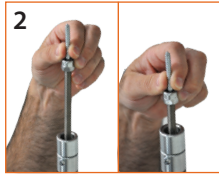
- Complies with NFPA 13 Code Changes.
- Flashing for dry pendant sprinklers subject to extreme temperature change.
- One piece construction is easy to install.
- Pipe diameter markings ensure accurate fit.
- EPDM temperature range of -65°F to +250°F.

Part Number	Description	Pipe Outside Diameter	Dektite Base Diameter	Dektite Height	Box Qty
4003910	1	1/4" - 2"	4-3/4"	3"	10
4004910	2	1-3/4" - 3-1/4"	6-1/4"	4"	10

**SAMMYS POLE TOOL™ –  
Installation Instructions**



1  
Adjust the Pole Tool to length. The adjusting pin must be 18" below the base or the pin may interfere with the rod.



2  
Load rod and Sammys into Pole Tool.



3  
The socket will spin free when the screw is completely installed. Pull down to remove the Pole Tool.

**PRODUCT FEATURES**

- Optimize jobsite speed.
- Work from the ground up.
- No scaffolding, ladders, or lifts.
- Perfect for working in tight spaces, through ceiling grid, and high vaulted ceilings.
- Works with any Vertical SAMMYS: Wood, Steel or Concrete.



Part Number	Description	Box Qty
SP6	Speedy Pole 6'-18'	1

Part Number	Model	Rod Size	Mount Direction	UL Max Pipe Size	UL Test Load (lbs)	UL Min Thickness	FM Max Pipe Size	FM Test Load (lbs)	FM Min Thickness
<b>SAMMYS FOR WOOD – PIPE HANGER</b>						<b>Min Wood Thickness</b>		<b>Min Wood Thickness</b>	
8007957	GST 10	3/8"	Vertical	CPVC 1-1/2"	300	1-1/2"			
8020957	SWG 10	3/8"	Horizontal	CPVC 1-1/2"	300	1-1/2"			
8008957	GST 20	3/8"	Vertical	2-1/2"	850	1-1/2"	4"	1475	1-1/2"
8068925	GST 20-SS	3/8"	Vertical	2-1/2"	850	1-1/2"			
8010957	GST 30	3/8"	Vertical	4"	1500	1-1/2"	4"	1475	1-1/2"
8009925	GST 25-380	3/8"	Vertical	4"	1500	1-1/2"			
8022925	SWG 25-380	3/8"	Horizontal	3-1/2" - 4"*	1500	1-1/2"			
8021957	SWG 20	3/8"	Horizontal	2-1/2" - 3"***	1050	1-1/2"			
8269957	SH-GST/CST 20	3/8"	Vertical	2-1/2"	850	1-1/2"			
8269957	SH-GST/CST 20	3/8"	45° Angle off Vertical	4"	1500	1-1/2"			
8139957	SH-GST 20	3/8"	17° Angle Off Vertical	3"	1050	1-1/2"	4"	1475	1-1/2"

<b>SAMMYS FOR STEEL – PIPE HANGER</b>						<b>Min Steel Thickness (ga)</b>		<b>Min Steel Thickness</b>	
8038957	DSTR 1	3/8"	Vertical	4"	1500	20	4"	1475	.105"
8037957	DSTR 1-1/2	3/8"	Vertical	4"	1500	20	4"	1475	.105"
8039957	DSTR 516	3/8"	Vertical	4"	1500	20	4"	1475	.105"
8045957	DST 516	3/8"	Vertical	4"	1500	3/16"	4"	1475	.188"
8046957	TEK 50	3/8"	Vertical	4"	1500	1/4"	4"	1475	.188"
8055957	SWDR 1	3/8"	Horizontal	4"	1500	20	4"	1475	.060"
8056957	SWDR 516	3/8"	Horizontal	4"	1500	20	4"	1475	.060"
8054957	SWDR 1-1/2	3/8"	Horizontal	4"	1500	20	4"	1475	.060"
8137957	SH-DSTR 1	3/8"	17° Angle off Vertical	4"	1500	20	4"	1475	.105"
8268957	SH-TEK 50	3/8"	Vertical 70° Angle off Vertical	2-1/2" 4"	850 1500				
8150922	XP 20	3/8"	Vertical	2-1/2"	850	22 4"	2" 4"	940 1475	.029" .105"
8153922	XP 35	3/8"	Vertical	4"	1500	16	2" 4"	940 1475	.029" .125"
8151957	XPDD 40	3/8"	Vertical	4"	1500	16			
8294922	SXP 20	3/8"	Vertical or up to 45°	2"	750	22	2"	635	.029"
8295922	SXP 35	3/8"	Vertical or up to 89°	3-1/2"	1250	16	2"	635	.029"
8293957	SWXP 35	3/8"	Horizontal	3-1/2"	1250	16			

<b>SAMMYS FOR CONCRETE – PIPE HANGER</b>									
8059957	CST 20	3/8"	Vertical				4"	1475	3000psi
8061957	SWC 20	3/8"	Horizontal				4"	1475	3000psi
8150922	XP 20	3/8"	Vertical	2-1/2"	850	Pre-Pour Structural @ 3000psi			
8150922	XP 20	3/8"	Vertical	2-1/2"	850	Post-Pour Range II LWC ≤ 35 PCF (lbs/ft³)			

Part Number	Model	Rod Size	Mount Direction	UL Load Rating (lbs)	UL Min Steel Thickness (ga)
<b>SAMMYS FOR STEEL – LUMINAIRE FITTING</b>					
8150922	XP 20	3/8"	Vertical	185 250	22 16
8153922	XP 35	3/8"	Vertical	185 250	22 16
8181922	XP 200	1/4"	Vertical	185 250	22 16
8151957	XPDD 40	3/8"	Vertical	185 250	22 20
8294922	SXP 20	3/8"	Vertical 45°	170 80	22 22
8295922	SXP 35	3/8"	Vertical 90°	250 80	16 16
8293957	SWXP 35	3/8"	Horizontal	80	16

Part Number	Model	Rod Size	Mount Direction	UL Load Rating (lbs)	UL Min Steel Thickness (ga)	Listed Application
<b>SAMMYS FOR STEEL – CONDUIT, TUBING, AND CABLE</b>						
8150922	XP 20	3/8"	Vertical	283	22	Max 4 trade size EMT, RMC, and IMC & 5 trade size rigid PVC conduit
8153922	XP 35	3/8"	Vertical	500	16	Max 4 trade size EMT & 6 trade size RMC, IMC, and rigid PVC conduit
8151957	XPDD 40	3/8"	Vertical	283 500	22 16	
8294922	SXP 20	3/8"	Vertical	283	22	Max 4 trade size EMT, RMC, and IMC & 5 trade size rigid PVC conduit
8295922	SXP 35	3/8"	Vertical	500	16	Max 4 trade size EMT & 6 trade size RMC, IMC, and rigid PVC conduit
8293957	SWXP 35	3/8"	Horizontal	500	16	Max 4 trade size EMT & 6 trade size RMC, IMC, and rigid PVC conduit

\* SWG 25-380 Maximum pipe size in composite wood joist allowed by UL is 3-1/2"  
 \* SWG 25-380 Maximum pipe size in wood timber or joist allowed by UL is 4"  
 \*\* SWG 20 Maximum pipe size in composite wood joist allowed by UL is 2-1/2"  
 \*\* SWG 20 Maximum pipe size in wood timber or joist allowed by UL is 3"

UL compliance with NEC Standards.  
 UL and FM tests were performed in compliance with NFPA 13 Standards.  
 Fastening requirement: 5 times weight of water-filled schedule 40 pipe plus 250 pounds



**SHEET STEEL GAUGES**

<b>Gauge No.</b>	22 ga	20 ga	18 ga	16 ga	14 ga	12 ga	1/8"	3/16"	1/4"
<b>Nominal Decimal Equivalent</b>	.030"	.036"	.048"	.060"	.075"	.105"	.125"	.188"	.25"

**ENGINEERING NOTE**

The anchors listed by UL were tested in plate steel that measured .188" and .118". Subsequent testing was done for z-purlin applications using (.037") or 20 gauge steel. Testing with the new Sammy X-Press® was completed using (.030") or 22 gauge steel metal deck.

**SAMMYS NUT DRIVERS**

Special nut drivers were designed to be used with Sammys. When the appropriate nut drivers are used for installation, the driver spins freely on the screw after installation is complete and eliminates the expected wrist snap, reduces over-torque, and prevents screw failure.

**STEEL SCREWS**

Due to variations in hardness of certain metals, it should be noted that our self-drilling screws for steel will experience different drill speeds, with an RPM range of 0-2500 for Teks 3 and 1-1800 for Teks 5.

**VIBRATORY ENVIRONMENTS**



For attaching or anchoring in high vibratory environments, special care should be taken not just for building attachments but also for the hangers or assemblies being supported. Consult local code authorities for accepted anchoring devices.

**COMPOSITE JOIST/TRUSS**

Truss manufacturers vary installation recommendations for composite joist. UL testing was completed to validate that Sammys and Sidewinders SWG 20 and SWG 25-380 can be installed into the top cord of a truss. Sammy GST 20 can be installed into the center of the lower cord of a composite joist. Penetration of the upright center web is permitted by some joist manufacturers. Consult truss manufacturer for recommended installation point.

Pre-drilling may be required by joist manufacturers. If so, pre-drill pilot hole 1/8" smaller than root diameter of fastener.

Consult the table below:

Part Number	Root Diameter	Hole Size
GST 20	.182"	1/8"
GST 25-380	.280"	7/32"
SWG 20	.182"	1/8"
SWG 25-380	.280"	7/32"

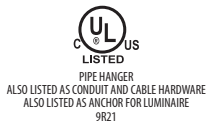
To increase efficiency of the installation process, sleeve tools, bit receivers, and wood bits are available for pre-drilling.

**NFPA/NEC STANDARDS**

All UL and FM testing complies with NFPA 13 and NEC standards. Check with your local (AHJ) Authority Having Jurisdiction to confirm application and usage.

**UL LISTINGS / FM APPROVALS**

UL and FM reports are available at [www.sammysanchors.com](http://www.sammysanchors.com)



**TECHNICAL DRAWINGS**

Technical drawings are available and can be downloaded at [www.sammysanchors.com](http://www.sammysanchors.com) in the following formats: .dwg, .dxf, and .pdf



**CONTACT INFORMATION**

Technical Assistance: (800) 848-5611  
Customer Service: (800) 848-5611





# SAMMYS<sup>®</sup>

## NATIONAL HEADQUARTERS

ITW COMMERCIAL CONSTRUCTION,  
NORTH AMERICA  
155 HARLEM AVE,  
GLENVIEW IL 60025  
PHONE: 800-848-5611  
FAX: 630-893-1270

## TECHNICAL SUPPORT

PHONE: 800-848-5611  
HOURS: 8:30 A.M. - 5:00 P.M. (CST, M-F)  
EMAIL: TECHSUPPORT@ITWCCNA.COM

## CUSTOMER SERVICE

PHONE: 800-848-5611  
HOURS: 7:30 A.M. - 5:00 P.M. (CST, M-F)  
EMAIL: ORDERS@ITWCCNA.COM

## WILL CALL/DISTRIBUTION

2501 GALVIN DR  
ELGIN, IL 60123  
PHONE: 800-848-5611



[www.sammysanchors.com](http://www.sammysanchors.com)

Check out our  
website