

SUBMITTAL: FX-OPTION SCHOOL FIRE EXTINGUISHER CABINETS

JL School Cabinets for fire extinguishers are constructed of heavy duty materials for rough duty applications, and offer a range of durable options.

Door & Trim Construction: 12 gauge steel with white powder-coat paint finish or 14 gauge #4 stainless steel door. Flush cabinet doors with 1-1/2" face trim on doors with glazing are mounted in a 5/8" door stop, attached by a heavy-duty continuous hinge and equipped with a zinc-plated handle and roller catch. Saf-T-Lok™ theft-deterrent feature is available on several door styles. All models meet the 4" ADA projection requirement.

Trim Style & Depth: **Recessed** - 1-1/2" wide flat trim. **Semi-Recessed** - 1-1/2" wide by 2-1/2" deep square edge.

Tub: FX models feature an inner tub of the same material and finish as the frame surrounded by fire-resistant material, and a painted steel, outer tub. Heavy-duty masonry anchors are provided on recessed & semi recessed models.

Fire-Rating: The recessed and semi-recessed Fire-FX™ cabinets are Intertek listed and labeled as an approved membrane penetration firestop system for up to 2 hours in accordance with ASTM-E814 when properly installed in a wall assembly according to installation instructions. The installation of this fire-rated cabinet which lacks a cabinet door or a condition in which the door is left ajar, will void the fire rating.



CS2015F17FX

STEP 1: SELECT MODEL NUMBER AND QUANTITY ON CHART BELOW

STEP 2: SELECT DOOR STYLE WITH HANDLE

Check one box below

- | | | |
|---|--|---|
| <input type="checkbox"/> F Full Glazing | <input type="checkbox"/> E Horizontal Duo Panel with SAF-T-LOK™ | <input type="checkbox"/> V Vertical Duo |
| <input type="checkbox"/> G Full Glazing with SAF-T-LOK | <input type="checkbox"/> S21 Solid Door | <input type="checkbox"/> W Vertical Duo with SAF-T-LOK |
| <input type="checkbox"/> D Horizontal Duo Panel | <input type="checkbox"/> L22 Solid with SAF-T-LOK™ | |

STEP 3: SELECT DOOR GLAZING Check one box below

- 10 Clear Acrylic
 17 Clear Tempered Glass
 18 Laminated Safety Glass

TRIM & DOOR MATERIAL & SERIES					TUB I.D. W x H x D in Inches			FRAME O.D. W x H in Inches		WALL OPENING FIRE-RATED FX OPTION			SHIP WT*	RECOMMENDED EXTINGUISHER
QTY	STEEL	QTY	STAINLESS	TRIM STYLE	A	B	C	E	F	W	H	D	LBS	Link to Extinguishers
	CS2015__FX		CS2035__FX	Flat Trim	12	27	7-3/4	15	30	14	29	8-3/4	61	Any Cosmic, Galaxy, Mercury, Saturn & Grenadier P, Sentinel 5-10
	CS2017__FX		CS2037__FX	2-1/2" Square Edge	12	27	7-3/4	15	30	14	29	6-1/2	62	

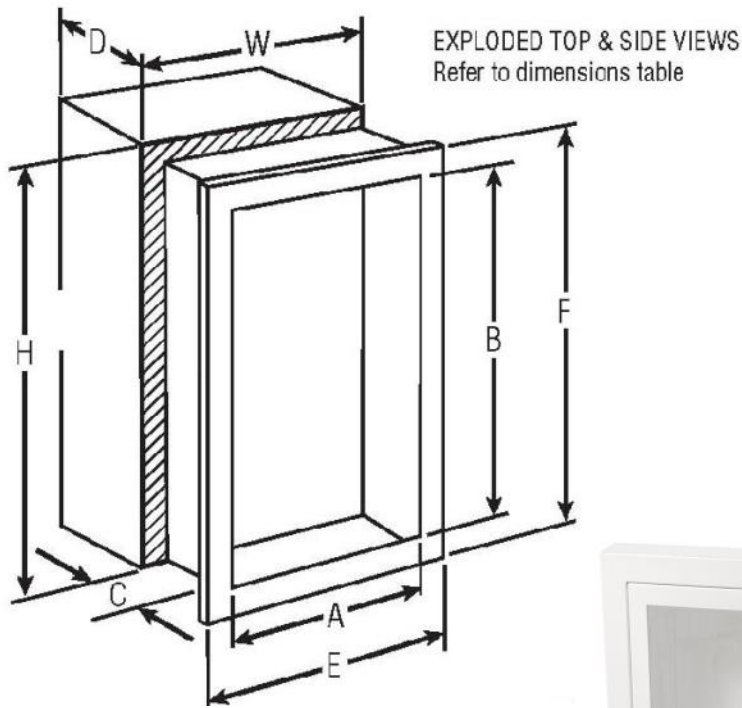
STEP 4: OPTIONAL FEATURES AT ADDED COST (SELECT ANY)

- | | | | |
|---|---|---|---|
| <input type="checkbox"/> Optional Tub Color: ___ Black ___ Red | <input type="checkbox"/> Black Vertical FE Letters LDCVBF | <input type="checkbox"/> White Horizontal FE Letters LDCHWFE | <input type="checkbox"/> Red Horizontal Decal LDHRFE |
| <input type="checkbox"/> Futura "Fire" Pull ___ Mill Alum ___ Red ___ White | <input type="checkbox"/> Red Vertical FE Letters LDCVRF | <input type="checkbox"/> Black Vertical Decal LDVBFE | <input type="checkbox"/> White Horizontal Decal LDHWFE |
| <input type="checkbox"/> Flush Pull Handle (PRH) | <input type="checkbox"/> White Vertical FE Letters LDCVWFE | <input type="checkbox"/> Red Vertical Decal LDVRF | |
| <input type="checkbox"/> Red Powder Coat Finish | <input type="checkbox"/> Black Horizontal FE Letters LDCHBFE | <input type="checkbox"/> White Vertical Decal LDVWFE | |
| <input type="checkbox"/> Black Powder Coat Finish | <input type="checkbox"/> Red Horizontal FE Letters LDCHRFE | <input type="checkbox"/> Black Horizontal Decal LDHBFE | |

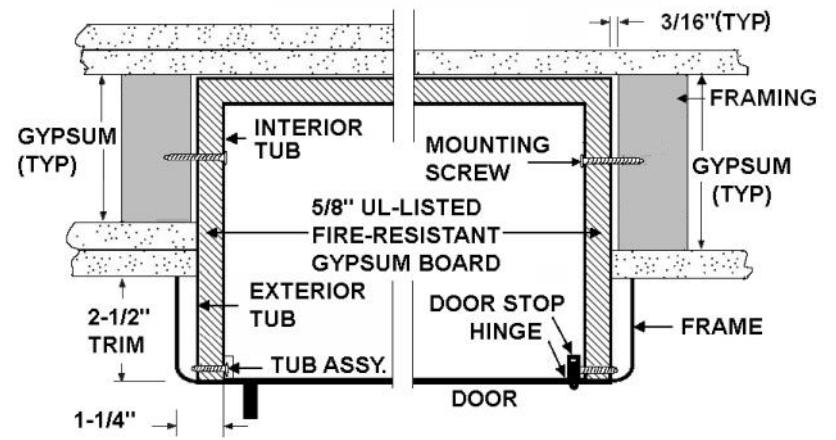
View Details for Decals & Die Cuts online

<p>800-554-6077 sales@activarcpg.com www.activarcpg.com</p> <p>9702 Newton Av S. Bloomington, MN 55431</p>	Distributor:	Project:	
	Contractor:	Approved By:	
	Date:	Quantity:	Architect:
	Scale: N/A	Pages: 1 of 2	Item #

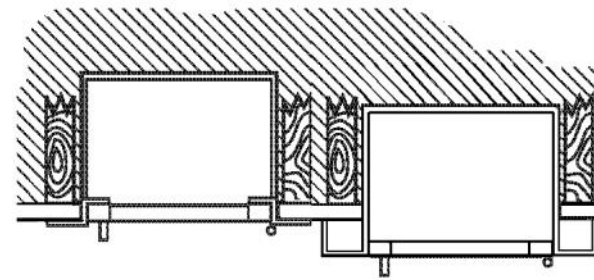
SUBMITTAL: FX-OPTION SCHOOL FIRE EXTINGUISHER CABINETS



CS2017F17FX



TYPICAL FIRE-RATED INSTALLATION



Flat Trim

2-1/2" Square Trim

It is the responsibility of the customer to communicate specifications and product performance requirements that are needed for their application. This document is intended to convey potential product configurations and offerings. It is not to be used to imply or represent a specification or rating, of finished products shipped. Detailed, specific submittals can be created upon request. It is the responsibility of the customer to specify product accordingly to comply with local laws, codes, and ordinances.