

# CABINETS — FX2—FIRE-RATED — 14I-102

## INSTALLATION AND MAINTENANCE GUIDE

### TOOLS AND HARDWARE NEEDED: (optional)

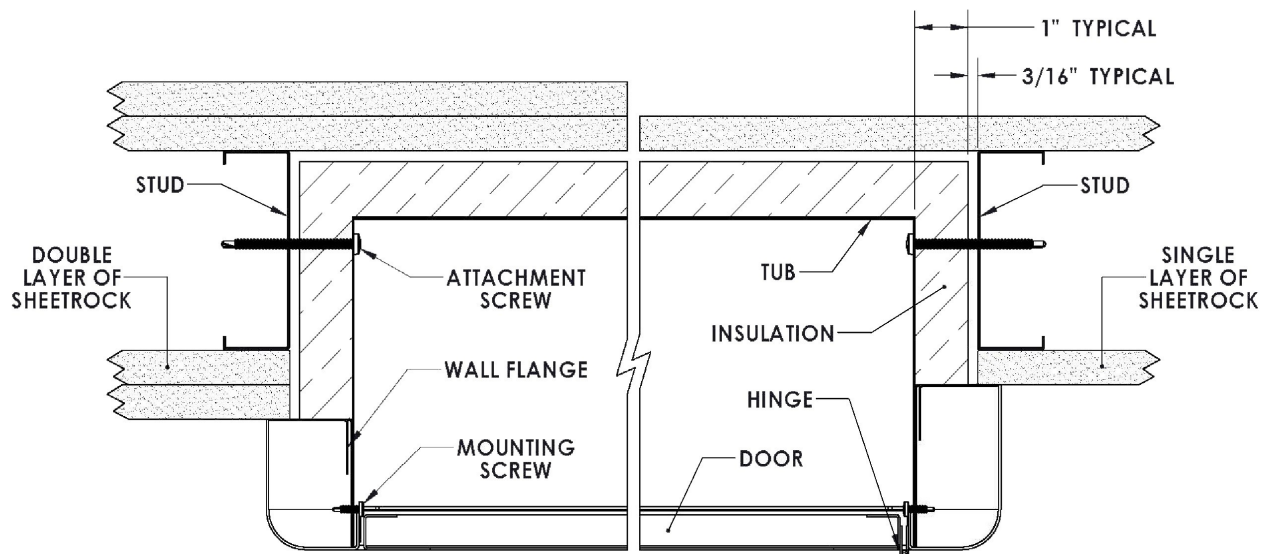
Screw gun, Universal # 6 x 2-1/2" (6.4 cm) self-drilling screws

### METAL OR WOOD FRAMING INSTALLATION (FIG 1):

1. Remove all hardware and glazing, unlock cabinet if lock provided.
2. Install a framed opening above, below and at both sides of cabinet opening at specified location. Wall opening width, height and depth must correspond with dimensions indicated in catalog or submittal sheet.
3. Use holes provided in cabinet tub for attaching to studding. If wall configuration does not allow for that, then follow step 4 below; otherwise, skip to step 5.
4. [Drilling Additional Holes] Drill (2) 1/8" (3.2 mm) holes through tub on each side of cabinet.
5. Place cabinet in position and attach with Universal # 6 x 2-1/2" (6.4 cm) self-drilling screws. Be sure not to over-tighten on either side, which could pull the cabinet out of position in the opening and result in an exposed gap between the cabinet frame and wall opening.
6. Start the screw without completely tightening; then start a screw on the opposite side of the tub. Once all screws are started, tighten each screw in a "criss-cross" pattern. A torque setting of 4-6 is recommended if using a screw gun.
7. Once screws are fully tightened, check cabinet for square and plumb. Adjust if necessary. All interior sides should be straight with no bowing or warping.
8. Check cabinet door assembly for freedom of movement. If it binds, shim as necessary to remove any racking of tub at attachments of stud. Cabinet will need to be removed temporarily in order to add shims.
9. Remove protective plastic from acrylic or glass and install decal if intended for glass. (Panorama models glazing is pre-installed)
10. Align glazing on inside of door, holding in place while installing glass mounting clips on inside of door. Do not over-tighten.
11. Install handle and roller catch or SAF-T-LOK™ in door. Check alarm if provided.

**NOTES:** For Trimless Cabinets (except Embassy)—see separate installation instructions. See separate Valve and Hose Cabinet installation instructions if knockouts are needed.

FIG 1



Note: Drawings shown on this page are examples only of typical installation in a fire-rated wall, and are not to be used as recommendations for wall construction



JL INDUSTRIES

800-554-6077

sales@activarcpg.com

www.activarcpg.com

9702 Newton Av S. Bloomington, MN 55431 | Many Locations Nationwide

INSTALLATION AND MAINTENANCE  
GUIDE 14I-102

Page 1 of 2

# CABINETS — FX2—FIRE-RATED — 14I-102

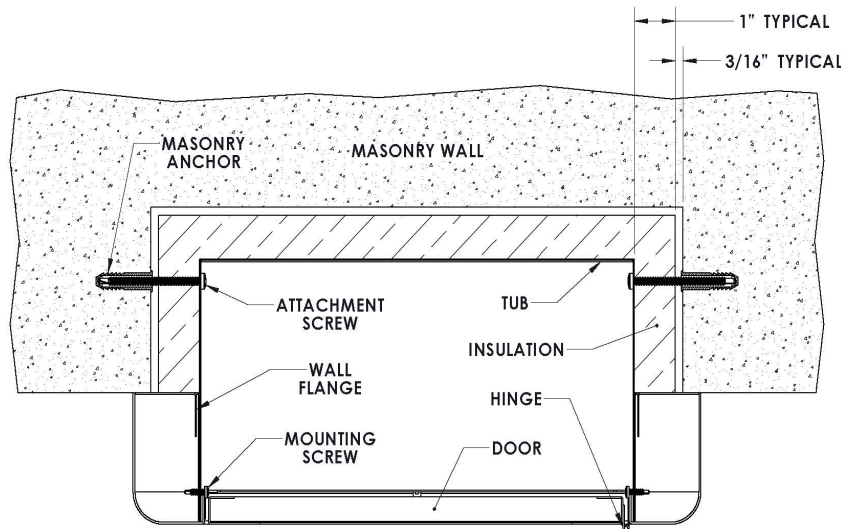
## INSTALLATION AND MAINTENANCE GUIDE

### MASONRY INSTALLATION (FIG 2):

1. Remove all hardware and glazing, unlock cabinet if lock provided.
2. Leave or create an opening in the masonry wall at specified location. Wall opening width, height and depth must correspond with dimensions indicated in catalog or submittal sheet.
3. Use holes provided in cabinet tub for attaching to masonry wall. If wall configuration does not allow for that, then follow step 4 below; otherwise, skip to step 5.
4. [Drilling Additional Holes] Drill (2) 1/8" (3.2 mm) holes through tub on each side of cabinet.
5. Place cabinet in position and mark location of attachments on masonry using 1/8" (3.2mm) holes as marking guides.
6. Remove cabinet and drill appropriately sized holes for your masonry anchors into masonry at marked points, and install anchors.
7. Place cabinet in position and attach with screws into masonry anchors. Be sure not to over-tighten on either side, which could pull the cabinet out of position in the opening and result in an exposed gap between the cabinet frame and wall opening.
8. Start the screw without completely tightening; then start a screw on the opposite side of the tub. Once all screws are started, tighten each screw in a "criss-cross" pattern. A torque setting of 4-6 is recommended if using a screw gun.
9. Once screws are fully tightened, check cabinet for square and plumb. Adjust if necessary. All interior sides should be straight with no bowing or warping.
10. Check cabinet door assembly for freedom of movement. If it binds, shim as necessary to remove any racking of tub at attachment to wall. Cabinet will need to be removed temporarily in order to add shims.
11. Remove protective plastic from acrylic or glass and install decal if intended for glass. (Panorama models glazing is pre-installed)
12. Align glazing on inside of door, holding in place while installing glass mounting clips on inside of door. Do not over-tighten.
13. Install handle and roller catch or SAF-T-LOK™ in door. Check alarm if provided.

**NOTES:** For Trimless Cabinets (except Embassy)—see separate installation instructions. See separate Valve and Hose Cabinet installation instructions if knockouts are needed.

FIG 2



**MAINTENANCE:** Manually operate once a year to check functionality of moving parts such as latches, hinges and handles. Periodically dust using a clean dry cloth. See separate "Cabinet Maintenance" for more information on cleaning various finishes.

Note: Drawings shown on this page are examples only of typical installation in a fire-rated wall, and are not to be used as recommendations for wall construction



**JL INDUSTRIES**



800-554-6077



sales@activarcpg.com



www.activarcpg.com

**INSTALLATION AND MAINTENANCE  
GUIDE 14I-102**

9702 Newton Av S. Bloomington, MN 55431 | Many Locations Nationwide

Page 2 of 2