



ROOF ACCESSORIES CATALOG

DIVISION 07 72 00

DIVISION 07 72 33

DIVISION 07 72 36

DIVISION 08 62 00

ROOFTOP PIPE SUPPORTS

ROOF HATCHES

SAFETY RAILINGS

SAFETY POSTS

EQUIPMENT HATCHES

SMOKE VENTS

SKYLIGHTS



ACTIVAR CONSTRUCTION PRODUCTS GROUP INC.



OUR BRANDS

For over 75 years, we have been known for developing, manufacturing, and distributing quality products for the commercial construction industry. Activar Construction Products Group now offer products under the brand names of JL Industries, Air Louvers, Maxam Metal Products, Dur-Red Products, and Cato. With multiple manufacturing plants and the most stocking locations in the industry, we provide fast local distribution to most major metropolitan areas of the US.

Dur-Red Products:

Dur-Red has been an industry leader for over 60 years in roof accessories due to our industry leading smoke vents and roof hatches. Our products are designed with cutting edge engineering to modernize the fabrication process along with using energy efficient components. We strive to manufacture the most durable products in the industry. Based in Los Angeles California, Dur-Red started as a family-run business that has been in operation since 1960. We have expanded and added to our offerings over the years, continuously developing new products. That legacy of innovation continues to this day by providing you a consistently superior product. Dur-Red is proud to produce the reliable RVF and RVFV smoke vent series, which increases safety by automatically opening during a fire to release harmful smoke and fumes. Always seeking to improve, we have added upgrades of polyisocyanurate insulation to our products for greater building energy efficiency. Further innovations include creating products that are now fabricated with galvalume steel and powder-coated, providing a more durable factory finish that will last for years

JL Industries:

Since 1947, the legacy brand of JL Industries has been designing, testing, and manufacturing quality products. With knowledgeable factory sales reps who work closely with our distribution partners nationwide, we support you from the start of a project to closeout. We give you easy access to resources such as specifications, BIM information and product documentation directly on our website. We are proud of our reputation for excellence and reliability in the industry. Our line of roof accessories includes roof hatches, safety railings and posts, and rooftop pipe supports.

Find documentation and the most current product information on our website at www.activarcpg.com

ANATOMY OF A ROOF HATCH Pictured below, JL Industries Diamond Series™ RHDG

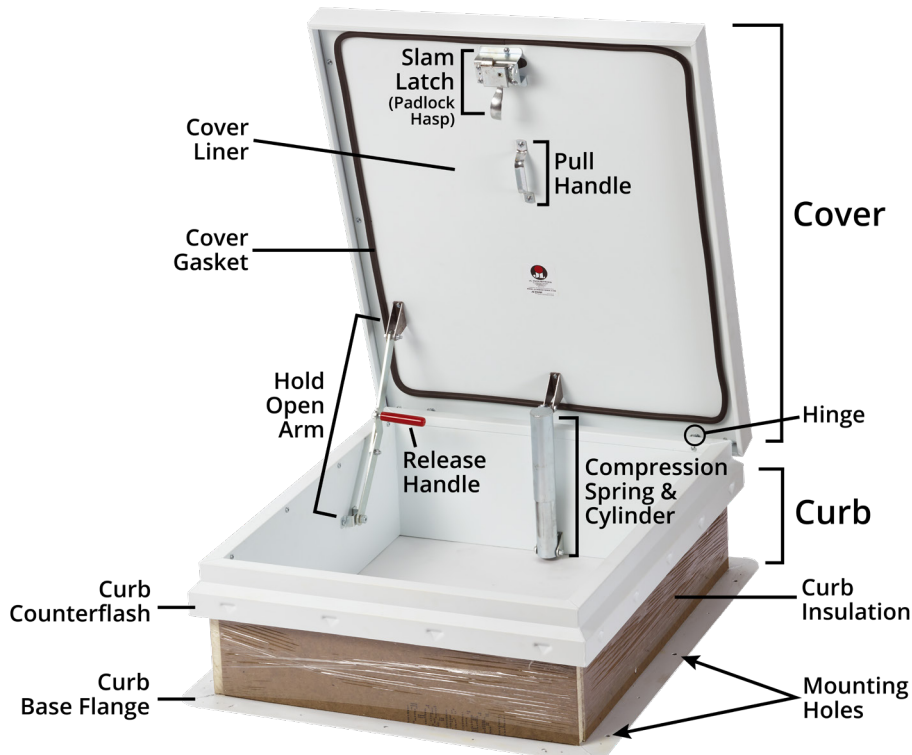


TABLE OF CONTENTS

ROOF HATCHES

Diamond™ Series Roof Hatch RHD4-5
 Dura Hatch™ Series Roof Hatch RHU6
 Dura Hatch™ Series Domed Roof Hatch RHUV7
 Thermablock™ Series Thermally Broken Roof Hatch RHTBA.8

SAFETY RAILINGS & ACCESSORIES

Bolt-On Safety Railing RSHWB9
 Compression Safety Railing RSHWC.....9
 Diamond™ Series Saf-T-Hatch™ with Railing RHDG-STH 10
 Safety Railing Gate RSHG 10
 Safety Grab Bar RSCBB-Y 10
 Spring-Balanced Ladder Post RSLP 11
 Extendable Safety Ladder Post LP-4 11
 EZ-Up Folding Safety Ladder Post LP-6..... 11
 Deflector Plate RHD-KIT-DEFLECTOR 11

SMOKE VENTS

Fahrenheit Series™, Double Door RVF..... 12
 Fahrenheit Series™, Double Door Domed RVFV..... 13

EQUIPMENT HATCHES

Dura-Hatch™ Series REH 14

SKYLIGHTS & SECURITY GRILLES

Spotlight Series™ Skylight RLV 15
 Security Grills RSG..... 15

PIPE SUPPORTS

Keycurb™ Supports RKC..... 15-16

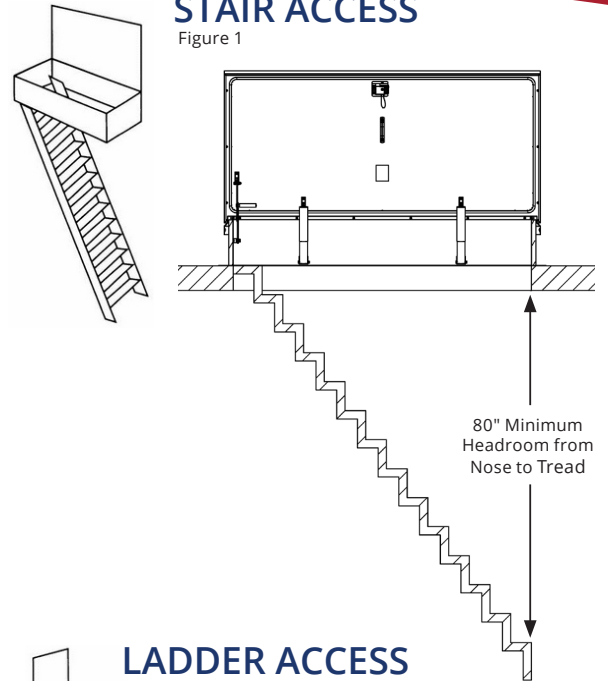


GALVANNEAL PERFORMANCE

Dur-Red continues to improve. In 2023, we converted many of our products from galvanized to galvaneal steel. Galvaneal steel is a much harder, more scratch-resistant steel that vastly improves formability, weldability and paint adhesion. The surface zinc-iron crystals mechanically lock to the powder paint. Galvanealed steel products, together with a powder coat paint, result in a synergistically improved corrosion resistance. We are always looking to the future with an eye for innovation.

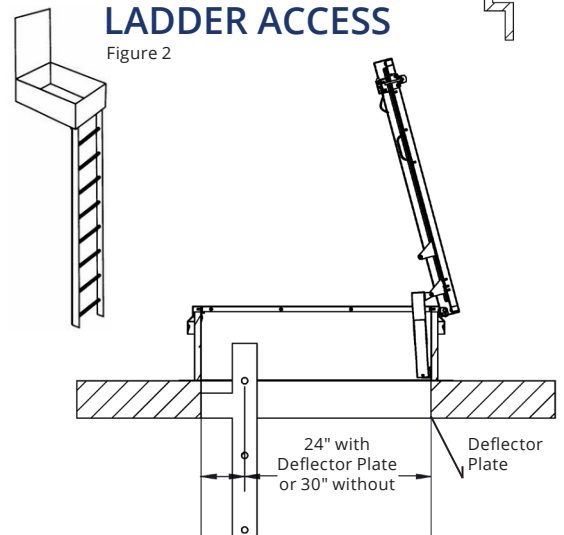
STAIR ACCESS

Figure 1



LADDER ACCESS

Figure 2



HEADROOM CLEARANCE: IBC & OSHA

Both International Building Code (IBC) 1011.3 and Occupational Safety and Health Administration (OSHA) 1910.25(b)(2) require 80" minimum stairway headroom clearance, as shown in the Stair Access image above (figure 1).

To provide adequate clearance for emergency personnel, and protect workers from injury while using the hatch, OSHA 1910.23(d)(13)(ii) specifies a minimum clearance of 30" between the centerline of the ladder rungs to the back edge (hinged side) of the hatch opening. Also, the minimum clearance may be reduced to 24 inches, provided deflector plates are installed, as shown in the Ladder Access image above (figure 2).



ROOF HATCHES

WHICH ROOF HATCH SHOULD I CHOOSE?

Use the chart below to select the roof hatch for your project needs.



ROOF HATCH SELECTION GUIDE		
SERIES	FEATURE	PAGE NO.
JL Industries Diamond Series RHD	<ul style="list-style-type: none"> • Simple Installation for membrane roofs • Powder coat options • Sizes up to 48" x 96" 	5
Dur-Red Dura-Hatch Series RHU	<ul style="list-style-type: none"> • Curb mount, All-But-Curb™, pitched curbs, standing seam curbs • Powder coat options • Larger sizes up to 48" x 120" 	6
Dur-Red Dura-Hatch Series RHUV	<ul style="list-style-type: none"> • Domed cover for natural lighting 	7
Thermablock Series RHTB	<ul style="list-style-type: none"> • Thermally broken for energy efficiency • Thermal resistance R-20 curb and cover 	8
Saf-T-Hatch Roof Hatch Series with Railing	<ul style="list-style-type: none"> • Combination roof hatch with safety railing kit 	9
Dur-Red Dura-Hatch Equipment Series REH	<ul style="list-style-type: none"> • Used to install and service large equipment • Sizes up to 72" x 96" 	14

DIAMOND SERIES™ ROOF HATCHES

Roof hatches provide convenient access to the rooftop from the inside of commercial buildings. JL Industries Diamond Series brings you the most value in a standard roof hatch. Available for both ladder and stair applications.

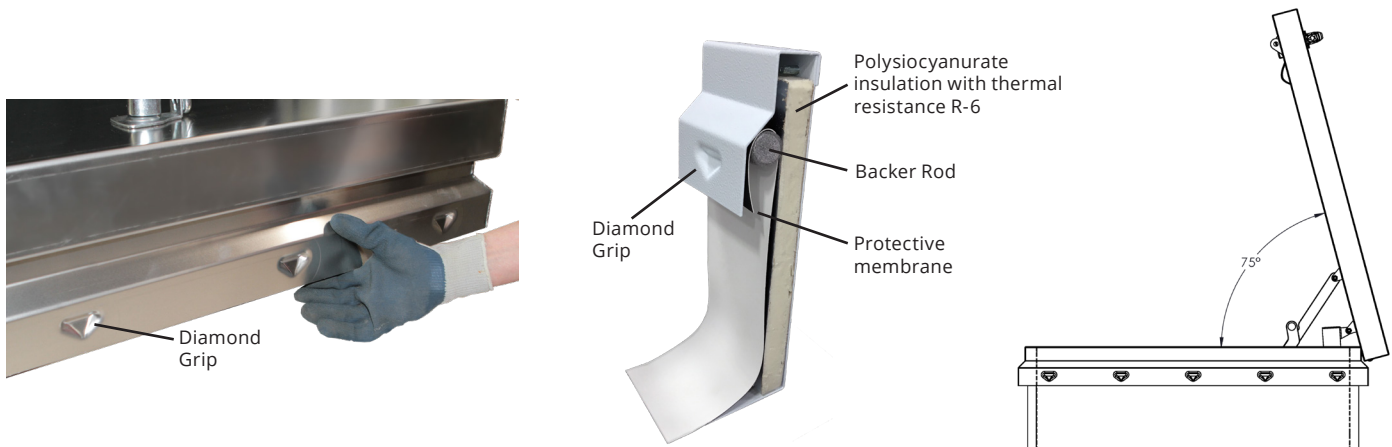
FEATURES

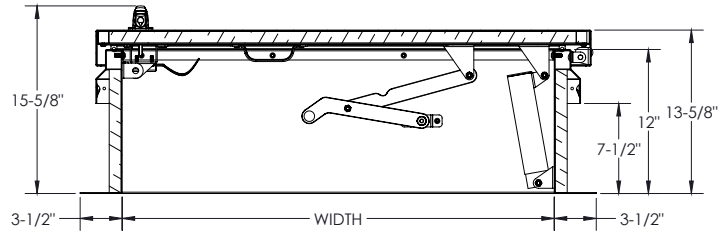
Easier, Faster Flashing System: Innovative patented Diamond Grip™ embossed counterflashing secures membrane for easier installation without tools

Energy Efficiency: Reduce energy costs with an R-6 insulation value for both curb and cover

Ease of Use: Counterbalance spring design makes cover easier to operate for compliance with OSHA standards for one-handed operation while on a ladder

Durable Powder Coat Finish: Durable infrared-reflective white or aluminum mill finish that minimizes heat buildup





DIAMOND SERIES™: RHDG STEEL ROOF HATCHES

JL Industries RHDG Diamond series in galvanized steel is designed for safe and easy roof access with R-6 insulation to reduce building energy costs. Our unique patented Diamond Grip® simplifies installation by securing the roof membrane without tools.

- Curb Material:** 14 gauge galvanized steel
 - Cover Material:** 14 gauge with 22 gauge galvanized steel liner
 - Finish:** White textured powder coat
 - Gasket:** Continuous, weatherproof EPDM sponge rubber adhesive-backed seal
 - Insulation:** 1" polyisocyanurate in curb and cover with R-6 thermal resistance
 - Hinge:** Heavy duty clear zinc-plated steel pintle hinge
 - Latch:** Clear zinc-plated steel slam latch with inside and outside handles and padlock hasps. Tested to 50psf wind uplift.
 - Spring:** Counterbalanced compression springs contained in clear zinc-plated steel cylinders
 - Hold-Open Arm:** Clear zinc-plated automatic locking hold-open arm with red vinyl grip for one-handed door operation
 - Performance:** Tested to support a live load of 40 psf
 - Sizes:**
 - Minimum:** 24" x 24"
 - Maximum:** 48" x 72" or 36" x 96"
- (Note: See Dur-Red model RHU for larger sizes)*

ADDITIONAL OPTIONS:

Stainless steel hardware, double wall curb, 2" R-12 or 1.5" R-9 polyisocyanurate curb insulation, curb height 13-22", color option for gray, red, or bronze textured powder coat painted finish

DIAMOND SERIES™: RHDA ALUMINUM ROOF HATCHES

JL Industries RHDA Diamond series in aluminum is designed for safe and easy roof access with R-6 insulation to reduce building energy costs. Our unique patented Diamond Grip® simplifies installation by securing the roof membrane without tools.

- Curb Material:** 11 gauge aluminum
 - Cover Material:** 11 gauge with 18 gauge aluminum liner
 - Finish:** Mill
 - Gasket:** Continuous, weatherproof EPDM sponge rubber adhesive-backed seal
 - Insulation:** 1" polyisocyanurate in curb and cover with R-6 thermal resistance
 - Hinge:** Heavy duty clear zinc-plated steel pintle hinge
 - Latch:** Clear zinc-plated steel slam latch with inside and outside handles and padlock hasps. Tested to 50psf wind uplift.
 - Spring:** Counterbalanced compression springs contained in clear zinc-plated steel cylinders
 - Hold-Open Arm:** Clear zinc-plated automatic locking hold-open arm with red vinyl grip for one-handed door operation
 - Performance:** Tested to support a live load of 40 psf
 - Sizes:**
 - Minimum:** 24" x 24"
 - Maximum:** 48" x 72" or 36" x 96"
- (Note: See Dur-Red model RHU for larger sizes)*

ADDITIONAL OPTIONS:

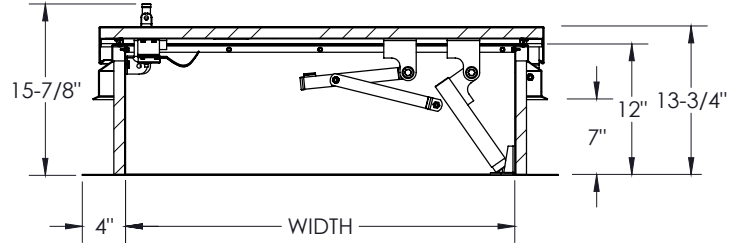
Stainless steel hardware, double wall curb, 2" R-12 or 1.5" R-9 polyisocyanurate curb insulation, curb height 13-22", fluoropolymer finish, color option for gray, red, or bronze textured powder coat painted finish

COMMON SIZES FOR RHDG & RHDA

ORDER SIZE W x L (L = Hinge Side)	RHDG (STEEL)	RHDA (ALUMINUM)	APPLICATION	ORDER SIZE W x L (L = Hinge Side)	RHDG (STEEL)	RHDA (ALUMINUM)	APPLICATION
36" x 30"	RHDG-1WT	RHDA-1	Ladder	48" x 48"	RHDG-5WT	RHDA-5	Ladder
30" x 54"	RHDG-2WT	RHDA-2	Stair	32" x 72"	RHDG-6WT	RHDA-6	Stair
30" x 96"	RHDG-3WT	RHDA-3	Stair	37" x 30"	RHDG-7WT	RHDA-7	Ladder
36" x 36"	RHDG-4WT	RHDA-4	Ladder	More Sizes Available, Refer to Submittal.			



ROOF HATCHES



DURA-HATCH SERIES™: RHUG STEEL ROOF HATCHES

The Dur-Red Dura Hatch Series in galvanized steel provides safe and easy access to rooftops from either ladders or stairs. Polyisocyanurate insulation in the cover and on the curb delivers energy savings. Our galvanized construction with factory powder coat paint affords a durable finish to withstand the elements.

- Curb Material:** 14 gauge galvanized steel
- Cover Material:** 14 gauge with 22 gauge galvanized steel liner
- Finish:** Grey textured powder coat
- Gasket:** Continuous, weatherproof EPDM sponge rubber adhesive-backed seal
- Insulation:** 1" polyisocyanurate in curb and cover with R-6 thermal resistance
- Hinge:** Heavy duty galvanized steel hinge with bolt pin
- Latch:** Zinc-plated steel single slam latch, or two-point universal spring latch spring assembly for larger sizes
- Spring:** Pressure intensifiers with compression spring provide lift assistance
- Hold-Open Arm:** Clear zinc-plated steel hold-open arm
- Sizes:**
Minimum: 24" x 24"
Maximum: 48" x 120"

ADDITIONAL OPTIONS:

All-But-Curb™, curb mount, double wall curb, standing seam curb, curb height 13" - 18", stainless steel hardware, 2" polyisocyanurate curb insulation, 1" x 6" wood nailer

DURA-HATCH SERIES™: RHUA ALUMINUM ROOF HATCHES

The Dur-Red Dura Hatch Series in aluminum provides safe and easy access to rooftops from either ladders or stairs. Polyisocyanurate insulation in the cover and on the curb delivers energy savings. Our aluminum construction with factory powder coat paint affords a durable finish to withstand the elements.

- Curb Material:** 11 gauge aluminum
- Cover Material:** 11 gauge with 18 gauge aluminum liner
- Finish:** Silver textured powder coat
- Gasket:** Continuous, weatherproof EPDM sponge rubber adhesive-backed seal
- Insulation:** 1" polyisocyanurate in curb and cover with R-6 thermal resistance
- Hinge:** Heavy duty aluminum hinge with bolt pin
- Latch:** Zinc-plated steel single slam latch, or two-point universal spring latch spring assembly for larger sizes
- Spring:** Pressure intensifiers with compression spring provide lift assistance
- Hold-Open Arm:** Clear zinc-plated steel hold-open arm
- Sizes:**
Minimum: 24" x 24"
Maximum: 48" x 120"

ADDITIONAL OPTIONS:

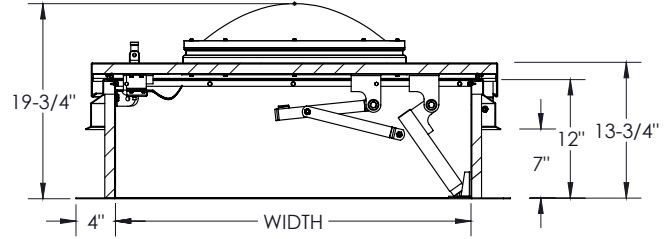
All-But-Curb™, curb mount, double wall curb, standing seam curb, curb heights, stainless steel hardware, 2" polyisocyanurate curb insulation, 1" x 6" wood nailer

COMMON SIZES FOR RHUG & RHUA

ORDER SIZE W x L (L = Hinge Side)	RHUG (STEEL)	RHUA (ALUMINUM)	APPLICATION	ORDER SIZE W x L (L = Hinge Side)	RHUG (STEEL)	RHUA (ALUMINUM)	APPLICATION
36" x 30"	RHUG-1GT	RHUA-1ST	Ladder	36" x 36"	RHUG-4GT	RHUA-4ST	Ladder
30" x 54"	RHUG-2GT	RHUA-2ST	Stair	48" x 48"	RHUG-5GT	RHUA-5ST	Ladder
30" x 96"	RHUG-3GT	RHUA-3ST	Stair	More Sizes Available, Refer to Submittal.			

ALL-BUT-CURB

Dur-Red's custom unit is called an All-But-Curb, because it comes without a curb. It is commonly used as a hatch rebuild kit. This unit is unique in that it allows you to use the existing curb and no re-roofing is needed.



DURA-HATCH SERIES™: RHUVG STEEL DOMED ROOF HATCHES

The Dur-Red domed roof hatch in galvanized steel provides single-handed opening and closing for safe and easy access to rooftops from either ladders or stairs. The cover includes domes that provide natural daylighting. Polyisocyanurate insulation in the cover and on the curb offer consistent energy-savings. Galvanized construction with a durable factory powder coat finish does not need to be painted in the field.

- Curb Material:** 14 gauge galvanized steel
- Cover Material:** 14 gauge with 22 gauge galvanized steel liner and polycarbonate domes
- Finish:** Grey textured powder coat
- Gasket:** Continuous, weatherproof EPDM sponge rubber adhesive-backed seal
- Insulation:** 1" polyisocyanurate in curb and cover with R-6 thermal resistance
- Hinge:** Heavy duty galvanized steel hinge with bolt pin
- Latch:** Zinc-plated aluminum single slam latch
- Spring:** Pressure intensifiers with compression spring provide lift assistance
- Hold-Open Arm:** Clear zinc-plated steel hold-open arm
- Dome:** Clear over white polycarbonate
- Sizes:**
 - Minimum:** 30" x 30"
 - Maximum:** 36" x 60" or 48" x 48"

ADDITIONAL OPTIONS:

- Hatch:** All-But-Curb™, curb mount, double wall curb, standing seam curb, curb height 13" - 18", stainless steel hardware, 2" polyisocyanurate curb insulation, 1" x 6" wood nailer
- Dome:** Polycarbonate single dome clear, polycarbonate single dome white, polycarbonate double dome - white over white

DURA-HATCH SERIES™: RHUVA ALUMINUM DOMED ROOF HATCHES

The Dur-Red domed roof hatch in aluminum provides single-handed opening and closing for safe and easy access to rooftops from either ladders or stairs. The cover includes domes that provide natural daylighting. Polyisocyanurate insulation in the cover and on the curb offer consistent energy-savings. Aluminum construction with a durable factory powder coat finish does not need to be painted in the field.

- Curb Material:** 11 gauge aluminum
- Cover Material:** 11 gauge with 18 gauge aluminum liner and polycarbonate domes
- Finish:** Silver textured powder coat
- Gasket:** Continuous, weatherproof EPDM sponge rubber adhesive-backed seal
- Insulation:** 1" polyisocyanurate in curb and cover with R-6 thermal resistance
- Hinge:** Heavy duty aluminum steel hinge with bolt pin
- Latch:** Zinc-plated aluminum single slam latch
- Spring:** Pressure intensifiers with compression spring provide lift assistance
- Hold-Open Arm:** Clear zinc-plated steel hold-open arm
- Dome:** Clear over white polycarbonate
- Sizes:**
 - Minimum:** 30" x 30"
 - Maximum:** 36" x 60" or 48" x 48"

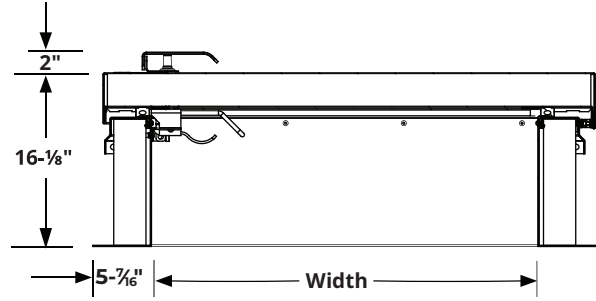
ADDITIONAL OPTIONS:

- Hatch:** All-But-Curb™, curb mount, double wall curb, standing seam curb, curb height 13" - 18", stainless steel hardware, 2" polyisocyanurate curb insulation, 1" x 6" wood nailer
- Dome:** Polycarbonate single dome clear, polycarbonate single dome white, polycarbonate double dome - white over white

COMMON SIZES FOR RHUVG & RHUVA							
ORDER SIZE W x L (L = Hinge Side)	RHUVG (STEEL)	RHUVA (ALUMINUM)	APPLICATION	ORDER SIZE W x L (L = Hinge Side)	RHUVG (STEEL)	RHUVA (ALUMINUM)	APPLICATION
36" x 30"	RHUVG-1GT	RHUVA-1ST	Ladder	36" x 36"	RHUVG-4GT	RHUVA-4ST	Ladder
30" x 54"	RHUVG-2GT	RHUVA-2ST	Stair	48" x 48"	RHUVG-5GT	RHUVA-5ST	Ladder
30" x 30"	RHUVG-3030GT	RHUVA-3030ST	Ladder	More Sizes Available, Refer to Submittal.			



ROOF HATCHES



THERMABLOCK SERIES: RHTB

The ThermalBlock thermally-broken roof hatch provides superior energy efficiency with R-20 insulation in both curb and cover, which reduces condensation and building energy costs.

Curb Material: 11 gauge aluminum

Cover Material: 11 gauge aluminum

Finish: Mill

Gasket: Continuous, weatherproof EPDM sponge rubber adhesive-backed seal

Insulation: 3" polyisocyanurate in curb and cover with R-20 thermal resistance

Hinge: Heavy duty zinc-plated steel pintle hinge

Latch: Zinc-plated steel slam latch with inside and outside handles and padlock hasps. Tested to 20psf wind uplift.

Spring: Gas spring with integrated damper for smooth, controlled lift assistance

Hold-Open Arm: Zinc-plated automatic locking hold-open arm locks cover in open position

Curb Construction: Thermally-broken single wall curb and counterflashing with tabs

Cover Construction: Thermally-broken cover stiffened to support a live load of 40 psf

Sizes:

Minimum: 26" x 24"

Maximum: 48" x 120"

COMMON SIZES FOR RHTB

ORDER SIZE W x L (L = Hinge Side)	ALUMINUM	APPLICATION
36" x 30"	RHTBA-1	Ladder
30" x 54"	RHTBA-2	Stair
30" x 96"	RHTBA-3	Stair
36" x 36"	RHTBA-4	Ladder
48" x 48"	RHTBA-5	Ladder

More Sizes Available, Refer to Submittal

ADDITIONAL OPTIONS:

Double wall curb



ENERGY EFFICIENCY = LOWER UTILITY COSTS

Our ThermalBlock system works via two continuous gaskets with low thermal conductivity to create a thermal block between the outside and the inside.

When the weather outside is colder, this combination of insulation and gasketing moderates the temperature on the inside of the roof hatch reducing condensation and icing. The roof hatch can also reduce the amount of heat transferred from a warmer exterior, keeping air conditioning costs lower.





BOLT-ON SERIES SAFETY RAILING: RSHWB

The OSHA compliant bolt-on series safety railing is ideal for new roof hatch installations. It's designed to bolt on the curb counterflashing and does not penetrate the curb protecting the integrity of the roof membrane. In addition, the overall height is adjustable to ensure code compliance.

Material: 1-5/8" x .065" (16 gauge) galvanized steel tubing

Bracket Material: 2" x 2" x .120" square galvanized steel tubing, 1/4" and 1/2" plate cold rolled steel

Finish: Yellow powder coat

Hinges: Steel, adjustable spring hinges

Gate: Self-closing, self-latching with telescoping size adjustment

Latch: Steel, black powder coat pin hooks around gravity latch catch

Hardware: Black plastic tubing caps and zinc-plated steel hardware

Sizing: Based on roof hatch size W x L, where L is hinged side

Minimum: 24" x 24"

Maximum: 48" x 120"

COMPRESSION SAFETY RAILING: RSHWC

The OSHA compliant, patented compression series safety railing is ideal for existing roof hatches. It's designed to mount on the curb counterflashing with adjustable width and length to accommodate other manufacturer's designs. In addition, the overall height is adjustable to ensure code compliance.

Material: 1-5/8" x .065" (16 gauge) galvanized steel tubing

Bracket Material: 2" x 2" x .048" (18 gauge) square galvanized steel tubing

Finish: Yellow powder coat

Hinges: Steel, adjustable spring hinges

Gate: Self-closing, self-latching with telescoping size adjustment

Latch: Steel, black powder coat pin hooks around gravity latch catch

Hardware: Black plastic tubing caps and zinc-plated steel hardware

Sizing: Based on roof hatch size W x L, where L is hinged side

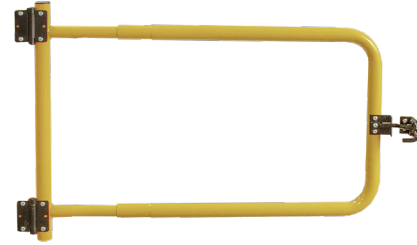
Minimum: 24" x 24"

Maximum: 48" x 96"

COMMON SIZES FOR RSHWB & RSHWC

SIZE W x L (W = EXIT DIMENSION)	MODEL (RSHWB)	MODEL (RSHWC)	FITS ROOF HATCH (W X L)	SIZE W x L (W = EXIT DIMENSION)	MODEL (RSHWB)	MODEL (RSHWC)	FITS ROOF HATCH (W X L)
36" x 30"	RSHWB-1LY	RSHWC-1LY	36" x 30"	36" x 36"	RSHWB-4LY	RSHWC-4LY	36" x 36"
30" x 54"	RSHWB-2LY	RSHWC-2LY	30" x 54"	48" x 48"	RSHWB-5LY	RSHWC-5LY	48" x 48"
30" x 96"	RSHWB-3LY	RSHWC-3LY	30" x 96"	32" x 72"	RSHWB-6LY	RSHWC-6LY	32" x 72"
				37" x 30"	RSHWB-7LY	RSHWC-7LY	37" x 30"

More Sizes Available, Refer to Submittal



DIAMOND SERIES™ SAF-T-HATCH™: RHDG-STH

The Diamond Series Saf-T-Hatch is a complete roof hatch with bolt-on safety railing. It is an all-in-one solution to ensure compatibility between the roof hatch and safety railing, that complies with OSHA fall protection requirements.

RHDG - STEEL DIAMOND™ SERIES PRODUCT DETAILS:

- Material:** 14 gauge galvanized steel curb and cover with 22 gauge galvanized steel liner
- Finish:** White textured powder coat
- Hinge:** Heavy-duty clear zinc-plated steel pintle hinge
- Latch:** Clear zinc-plated steel slam latch with inside and outside handles and padlock hasps
- Gasket:** Continuous weatherproof EPDM sponge rubber adhesive-backed seal
- Spring:** Counterbalanced compression springs contained in clear zinc-plated steel cylinders
- Hold Open Arm:** Clear zinc-plated steel hold-open arm
- Insulation:** 1" polyisocyanurate (R-6) on curb and in cover

RSHWB BOLT-ON RAILING DETAILS:

- Material:** 1-5/8" x .065" (16 gauge) galvanized steel tubing
- Bracket Material:** 2" x 2" x .120" square galvanized steel tubing, 1/4" and 1/2" cold rolled steel
- Finish:** Yellow powder coat
- Hinges:** Steel, adjustable spring hinges
- Gate:** Self-closing, self-latching with telescoping size adjustment
- Latch:** Steel, black powder coat pin hooks around gravity latch catch
- Hardware:** Black plastic tubing caps and zinc-plated steel hardware
- Certifications:** Railing meets OSHA 1910.29 requirement for safe egress and ingress through rooftop hatch openings

NOTE: Combination kit includes roof hatch with safety railing

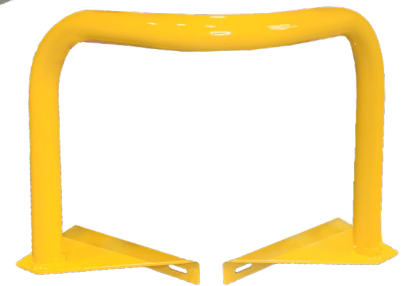
COMMON SIZES FOR RHDG-STH

ORDER SIZE W x L (L = Hinge Side)	MODEL	APPLICATION
36" x 30"	RHDG-1-STH	Ladder
30" x 54"	RHDG-2-STH	Stair
30" x 96"	RHDG-3-STH	Stair
36" x 36"	RHDG-4-STH	Ladder
48" x 48"	RHDG-5-STH	Ladder
32" x 72"	RHDG-6-STH	Stair
37" x 30"	RHDG-7-STH	Ladder

SELF CLOSING GATE FOR RAILING: RSHG-3048

The stand-alone, self-closing, self-latching gate is used to replace chains on existing safety railings to ensure compliance with OSHA CFR 29 1910.29 fall protection. The gate telescopes to accommodate 30"- 48" openings, and easily bolts onto existing upright posts of any manufacturer's safety railing.

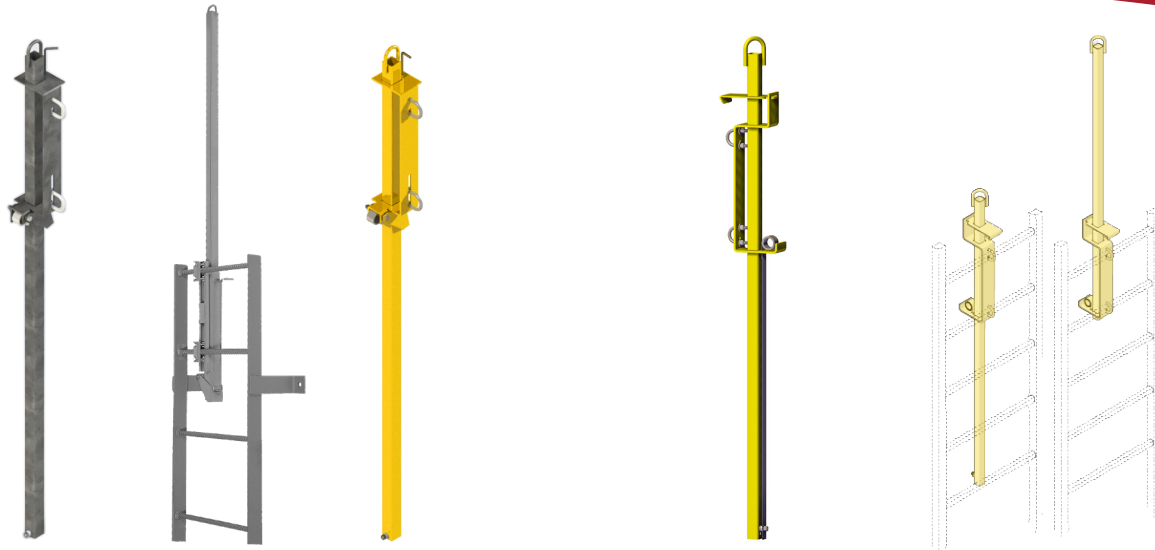
- Material:** 1-5/8" x .065" (16 gauge) galvanized steel tubing
- Finish:** Yellow powder coat
- Hinges:** Steel, adjustable spring hinges
- Hardware:** Black plastic tubing caps and zinc plated steel hardware



SAFETY GRAB BAR: RSCBB-Y EXTERIOR MOUNTED

The Safety Grab Bar is always right in place, ready for use! Easily retrofitted with its universal mounting on either the right or left side of the roof hatch curb corner into the capflashing, so it does not penetrate the roof membrane.

- Material:** 1-1/4" (32 mm) steel tubing and steel plate mounting brackets
- Finish:** Safety yellow powder coat paint
- Mounting Hardware:** Steel bolts with nylon lock nuts
- Size:** 12" (305 mm) wide x 12" (305 mm) tall



SPRING-BALANCED LADDER POST: RSLP EXTERIOR MOUNTED

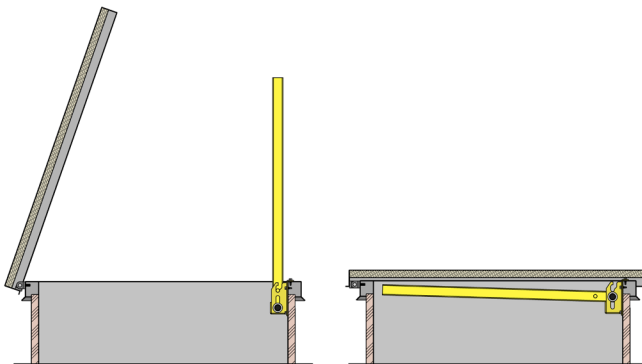
Designed for safe entry and exit assistance from roof hatch or floor door in an upright and balanced position. The spring balanced safety post comes fully assembled, ready for installing onto fixed vertical ladder rungs.

- Post Material:** Heavy wall square tubing: 1-1/2" x 1-1/2" steel
- Finish:** Hot dip galvanized or yellow powder coat
- Spring Type:** Constant force balancing stainless steel spring
- Hardware Included:** Zinc plated U-Bolts.

EXTENDABLE SAFETY LADDER POST: LP-4 SPRING BALANCED, LADDER MOUNTED

The telescoping safety ladder post, when fully extended to its locked position, enables the user to step on or off the fixed ladder in a safe standing position while holding onto the post. Safety posts mount to the top two rungs of a fixed vertical ladder and when extended resides 42" above the access/egress level, as required by ANSI 14.3.

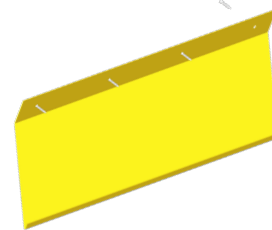
- Material:** Mild steel square tubing 1-1/2" x 1-1/2" x 1/8"
- Locking Bracket Material:** 0.20" Steel plate
- Clamping Bracket Material:** 0.25" Steel plate
- Finish:** Yellow powder coat
- Spring Type:** Stainless steel constant force power spring
- Hardware Kit (included):** Zinc-plated steel U bolts, 3/8" zinc plated steel nylon insert locknuts and washers



EZ-UP FOLDING LADDER POST: LP-6 INTERIOR MOUNTED

JL Industries EZ-UP LP-6 assembly permanently mounts to the roof hatch interior to act as an extension to the ladder enabling users to safely enter and exit the roof hatch. The ladder post folds down into the curb when not in use and can be raised and lowered with ease, using only one hand.

- Material:** 1-1/2" x 1-1/2" square steel post attached by swivel bolt to welded 10 gauge steel plate mount
- Finish:** Safety yellow powder coat paint
- Mounting:** Mounts to roof hatch curb with 3/8" x 14 screws
- Size:** Overall dimensions 34-3/8" x 1-1/2"



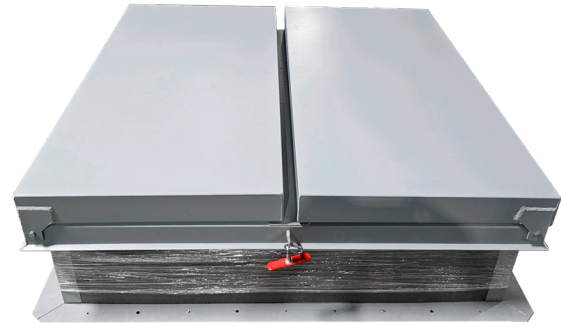
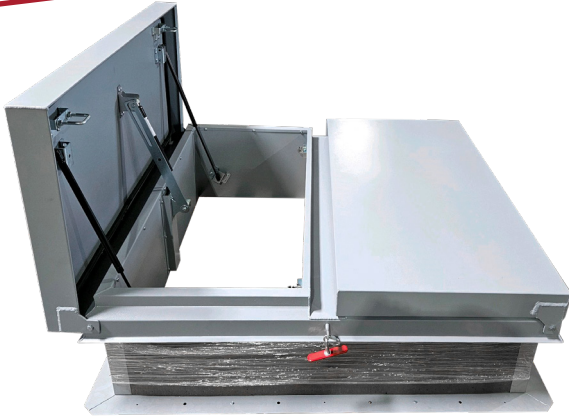
DEFLECTOR PLATE: RHD-KIT-DEFLECTOR

OSHA 1910.23(d)(13)(ii) requires deflector plates for head hazards when the clearance is not sufficient. All ladder access roof hatches with widths <37" require deflector plates, which includes industry standard roof hatch sizes like the 36"x30" model RHDG-1WT.

- Material:** 20 gauge cold rolled steel (CRS)
- Finish:** Safety yellow powder coat paint
- Hardware:** #8 Flathead Philips screws mount into wood blocking or other material supporting the roof hatch



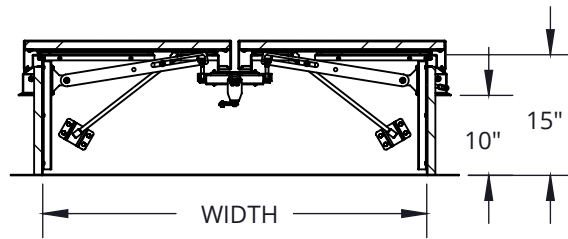
SMOKE VENTS



FARENHEIT SERIES™: RVF DOUBLE DOOR SMOKE VENT

Dur-Red's Fahrenheit series automatically opens during a fire, releasing harmful smoke and fumes. Formerly known as the UFV, UFSH or FSH series.

- Curb Material:** 14 Gauge galvalneal steel
- Cover Material:** 11 Gauge aluminum with 18 gauge aluminum cover liner
- Finish:** Silver textured powder coat
- Gasket:** Continuous, weatherproof EPDM sponge rubber adhesive-backed seal
- Insulation:** 1" polyisocyanurate on curb and in cover
- Hinge:** Heavy-duty aluminum hinge with bolt pin
- Hold-Open Arm:** Clear zinc-plated steel hold-open arm
- Latch:** Rotary latch mechanism designed to hold covers closed against 90psf wind uplift. Opens manually with internal and external manual pull handles and automatically with fusible link.
- Spring:** Gas springs with dampers automatically open doors against 10 PSF snow load
- Sizes:**
 - Minimum:** 48" x 48"
 - Maximum:** 48" x 96"
- Certifications:** UL793 listed and labeled up to 48"x 96"



ADDITIONAL OPTIONS:

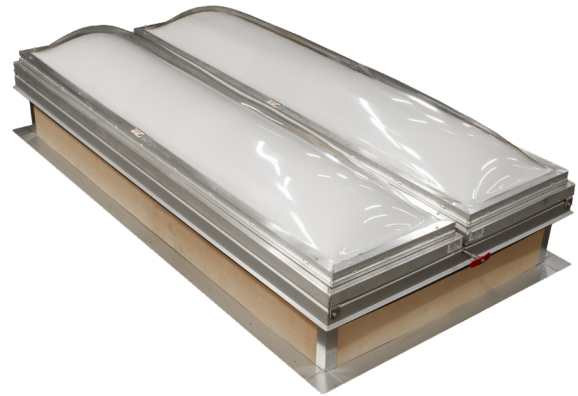
Curb mount, double wall curb, 2" polyisocyanurate on curb, electrical/thermal McCabe® link temperatures, various fuse link temperatures

COMMON SIZES FOR RVF	
ORDER SIZE W X L (L = Hinge Side)	RVF
48" x 48"	RVFGA-4848ST
48" x 72"	RVFGA-4872ST
48" x 90"	RVFGA-4890ST
48" x 96"	RVFGA-4896ST

More Sizes Available, Refer to Submittal.

BENEFITS OF OUR SMOKE VENT

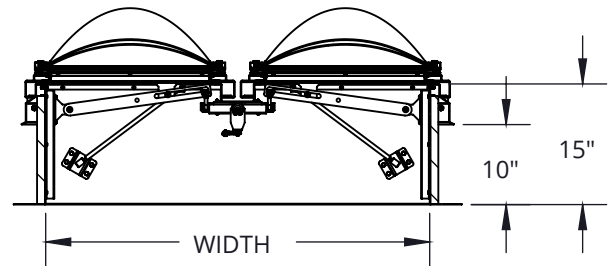
Double door smoke vents automatically open during a fire with a heat responsive device, releasing harmful smoke and fumes. Smoke vents are required as referenced in International Building Code section 410 for stages, platforms and technical production areas and section 910 for smoke and heat removal in storage and warehouse occupancies.



FARENHEIT SERIES™: RVFV DOUBLE DOOR DOMED SMOKE VENT

Dur-Red's Farenheit domed series automatically opens during a fire, releasing harmful smoke and fumes. The dome provides natural daylighting where smoke vents are installed. Formerly known as the UDFV, and FSHD series.

- Curb Material:** 14 Gauge galvalneal steel
- Cover Material:** Polycarbonate domes with aluminum extrusion frame
- Finish:** Silver textured powder coat
- Dome:** Clear over white polycarbonate
- Gasket:** Continuous, weatherproof EPDM sponge rubber adhesive-backed seal
- Insulation:** 1" polyisocyanurate on curb
- Hinge:** Heavy-duty aluminum hinge with bolt pin
- Hold-Open Arm:** Clear zinc-plated steel hold-open arm
- Latch:** Rotary latch mechanism designed to hold covers closed against 90psf wind uplift. Opens manually with internal and external manual pull handles and automatically with fusible link.
- Spring:** Gas springs with dampers automatically open doors against 10 PSF snow load
- Sizes:**
 - Minimum:** 48" x 48"
 - Maximum:** 48" x 96"
- Certifications:** UL793 listed and labeled up to 48"x 96"



COMMON SIZES FOR RVFV	
ORDER SIZE W X L (L = Hinge Side)	RVFV (DOMED)
48" x 48"	RVFVGA-4848ST
48" x 72"	RVFVGA-4872ST
48" x 90"	RVFVGA-4890ST
48" x 96"	RVFVGA-4896ST

More Sizes Available, Refer to Submittal.

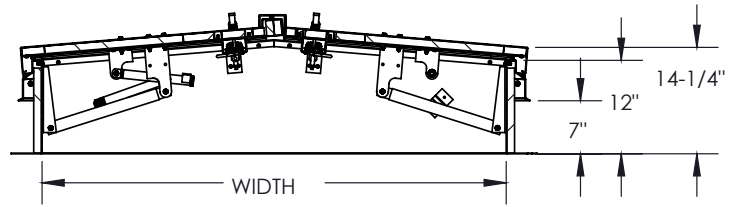
ADDITIONAL OPTIONS:

Hatch: Curb mount, double wall curb, 2" polyisocyanurate on curb, electrical/thermal McCabe® link temperatures, various fuse link temperatures

WHY GET A DOME?
 A dome on your smoke vent serves as a natural light source by providing a skylight. Without sacrificing energy saving properties or safety, a domed smoke vent is ideal for commercial applications where some extra illumination is desired.



EQUIPMENT HATCHES



EQUIPMENT DURA-HATCH SERIES™: REHG STEEL DOUBLE DOOR HATCH

The Dur-Red Dura-Hatch Equipment series is ideal for installing and servicing large equipment through the roof

- Curb Material:** 14 Gauge galvalneal steel
- Cover Material:** 14 Gauge with 22 gauge galvalneal steel liner
- Finish:** Gray textured powder coat
- Gasket:** Continuous, weatherproof EPDM sponge rubber adhesive-backed seal
- Insulation:** 1" polyisocyanurate on curb and in cover
- Hinge:** Heavy-duty galvalneal steel hinge with bolt pin
- Hold-Open Arm:** Clear zinc-plated steel hold-open arm
- Latch:** Two point universal spring latches on each cover with exterior and interior handles
- Spring:** Pressure intensifiers with compression springs provide lift assistance
- Sizes:**
 - Minimum:** 48" x 48"
 - Maximum:** 72" x 96"
- Clear Opening:** Minus 8" on width and minus 8" on length

ADDITIONAL OPTIONS:

Curb-mount, double-wall curb, curb height 13" - 18", stainless steel hardware, 2" polyisocyanurate insulation in curb, 1" x 6" nailer, galvalneal steel double door domed cover

EQUIPMENT DURA-HATCH SERIES™: REHA ALUMINUM DOUBLE DOOR HATCH

The Dur-Red Dura-Hatch Equipment series is ideal for installing and servicing large equipment through the roof

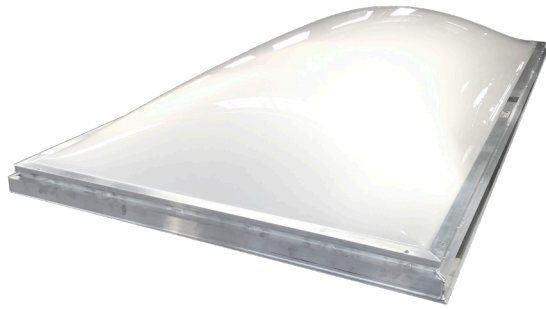
- Curb Material:** 11 Gauge aluminum
- Cover Material:** 11 Gauge with 18 gauge aluminum liner
- Finish:** Silver textured powder coat
- Gasket:** Continuous, weatherproof EPDM sponge rubber adhesive-backed seal
- Insulation:** 1" polyisocyanurate on curb and in cover
- Hinge:** Heavy-duty aluminum hinge with bolt pin
- Hold-Open Arm:** Clear zinc-plated steel hold-open arm
- Latch:** Two point universal spring latches on each cover with exterior and interior handles
- Spring:** Pressure intensifiers with compression springs provide lift assistance
- Sizes:**
 - Minimum:** 48" x 48"
 - Maximum:** 72" x 96"
- Clear Opening:** Minus 8" on width and minus 8" on length

ADDITIONAL OPTIONS:

Curb-mount, double-wall curb, curb height 13" - 18", stainless steel hardware, 2" polyisocyanurate insulation in curb, 1" x 6" nailer, aluminum double door domed cover

COMMON SIZES FOR REHG & REHA					
ORDER SIZE W X L (L = Hinge Side)	REHG (STEEL)	REHG (ALUMINUM)	ORDER SIZE W X L (L = Hinge Side)	RHUG (STEEL)	REHG (ALUMINUM)
48" x 48"	REHG-4848GT	REHA-4848ST	60" x 96"	REHG-6096GT	REHA-6096ST
48" x 90"	REHG-4890GT	REHA-4890ST	72" x 72"	REHG-7272GT	REHA-7272ST
60" x 60"	REHG-6060GT	REHA-6060ST	72" x 96"	REHG-7296GT	REHA-7296ST

More Sizes Available, Refer to Submittal.



SPOTLIGHT SERIES™ SKYLIGHT: RLV

Provides natural daylighting in commercial buildings

Material: Curb-mounted extruded aluminum frame with sloping condensation gutter for drainage

Domes: Clear over white acrylic

Sizes: Minimum 14" x 14". Maximum 48" x 96"

ADDITIONAL OPTIONS:

6" Self-flashing curb with 18 gauge galvanized steel or 11 gauge aluminum. Self-flashing curb heights up to 18".

Dome Options: Acrylic or polycarbonate, clear or white, single dome

SECURITY GRILLES: RSG

FOR SMOKE VENTS AND SKYLIGHTS

Add security and fall protection to rooftop smoke vents and skylights with Dur-Red's RSG security grille. Available in drop-in or bolt-in models.

Material: 1/2" Diameter steel rod welded to flange with 6" x 12" bar spacing

Flange: 1-1/4" x 1-1/4" 14 gauge galvanized steel angle drop-in flange for mounting prior to and underneath the smoke vent flange

Finish: Powder coat silver textured

Sizes:

Minimum: 48" x 48"

Maximum: 60" x 96"

ADDITIONAL OPTIONS:

Bolt-in flange that mounts inside smoke vent or support structure, various bar spacings

KEYCURB™ SUPPORTS

KEYCURB SUPPORTS: RKC CONFIGURABLE ROOFTOP PIPE SUPPORTS

The KeyCurb series is ideal for properly supporting piping, conduits and other rooftop components without penetrating the roof deck. Made from 100% recycled UV-resistant rubber base, it distributes weight to comply with roof deck compression load limits. Easy to install, KeyCurb supports come in a variety of adjustable heights to provide flexibility when supporting custom HVAC ductwork.



KeyCurb Base RKC

Base Material: Molded recycled rubber

Base Dimensions W x L x H: 6" x 10" x 4-7/8"

Base Weight (RKC base only): 5 lbs.

KEYCURB SUPPORT MODELS

STRUT RKCSN		BRIDGE RKCBN		ROLLER RRCRN		ROLLER EXTENSION RKCRE	
Overall Height 6-1/2"	Channel 7/8" x 1-5/8"	Overall Height 6-1/2"	Channel 7/8" x 1-5/8"	Height 9-2/3"	Roller 3-1/2" width	Height adjust- able up to 13"	Roller 3-1/2" width
MODELS		MODELS		MODELS		MODELS	
RKCSN1-8 8" Channel length		RKCSN2-24 24" Channel length		RRCRN1-4 Pipe diameters up to 4"		RKCRE1-4 Pipe diameters up to 4"	
RKCSN1-12 12" Channel length		RKCSN2-36 36" Channel length		Roller is made from molded plastic		Roller is made from molded plastic	
RKCSN1-16 16" Channel length		RKCSN2-48 48" Channel length					

KEYCURB™ SUPPORTS CONT.



KEYCURB SUPPORTS: CONFIGURABLE ROOFTOP PIPE SUPPORTS

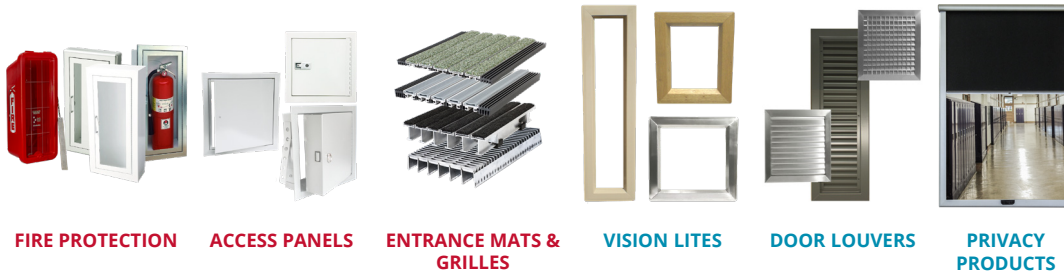
KEYCURB SUPPORT MODELS			
STRUT EXTENSION RKCSE		BRIDGE RKCBN	
Height adjustable up to 13"	Channel 7/8" x 1-5/8"	Height adjustable up to 13"	Channel 7/8" x 1-5/8"
MODELS		MODELS	
RKCSE1-8 8" Channel length		RKCBE2-24 24" Channel length	
RKCSE1-12 12" Channel length		RKCBE2-36 36" Channel length	
RKCSE1-16 16" Channel length		RKCBE2-48 48" Channel length	
MULTIPURPOSE SINGLE RKCMA1		MULTIPURPOSE DUAL RKCMA2	
Heights: 18", 24", 36", 48", 60"	Channels 1-5/8" x 1-5/8"	Heights: 18", 24", 36", 48", 60"	Channels 1-5/8" x 1-5/8"
MODELS		MODELS	
RKCMA1-3618 36" Vertical, 18" Crossbar		RKCMA2-3618 36" Vertical, 18" Crossbar	
RKCMA1-3624 36" Vertical, 24" Crossbar		RKCMA2-3624 36" Vertical, 24" Crossbar	
RKCMA1-3636 36" Vertical, 36" Crossbar		RKCMA2-3636 36" Vertical, 36" Crossbar	
RKCMA1-3648 36" Vertical, 48" Crossbar		RKCMA2-3648 36" Vertical, 48" Crossbar	

It is the responsibility of the customer to communicate specifications and product performance requirements that are needed for their application. This document is intended to convey potential product configurations and offerings. It is not to be used to imply or represent a specification or rating, of finished products shipped. Detailed, specific submittals can be created upon request. It is the responsibility of the customer to specify product accordingly to comply with local laws, codes, and ordinances.

CHECK OUT ALL OUR BRANDS WITH A VARIETY OF PRODUCTS!

Manufacturing locations: Bloomington, MN | Commerce, CA | Fort Myers, FL | Burnaby, BC, Canada

Warehouses: Dallas, TX | Chicago, IL | Seattle, WA | Atlanta, GA | Lancaster, PA | Salt Lake City, UT



FIRE PROTECTION

ACCESS PANELS

ENTRANCE MATS & GRILLES

VISION LITES

DOOR LOUVERS

PRIVACY PRODUCTS



800-554-6077

sales@activarcpg.com

www.activarcpg.com

ACTIVAR CONSTRUCTION PRODUCTS GROUP INC.