

SOUND

ACOUSTICAL ASSEMBLIES
REFERENCE GUIDE

MANAGEMENT



Johns Manville
A Berkshire Hathaway Company

AS AN INDUSTRY LEADER

*in insulation solutions, Johns Manville takes great pride in developing products with strong sound-attenuating properties. **We achieve this by paying strict attention to third-party research and meeting industry standards.** Our products also undergo rigorous testing in our own certified laboratories to ensure that we deliver the solutions our customers have depended on for years.*

Refer to this easy-to-use guide to determine the most appropriate assemblies to meet your Sound Transmission Class (STC) requirements. With the widest offerings on the market and a customer service staff ready to offer full support, we are confident you'll find the appropriate sound-control solution you need for your project.

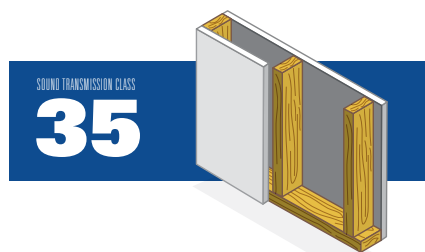
TABLE OF CONTENTS

Fiberglass Interior Wall Assemblies	
Single Wood Studs	4
Staggered Wood Studs	6
Double Wood Studs	7
2½" 25-Gauge Steel Studs	8
3⅝" 25-Gauge Steel Studs	9
3⅝" 20-Gauge Steel Studs	10
6" Steel Studs	11
Fiberglass Floor/Ceiling Assemblies	12
Spray Foam Interior Wall Assemblies	14
Sheathing Continuous Insulation Exterior Residential Wall Assemblies	16

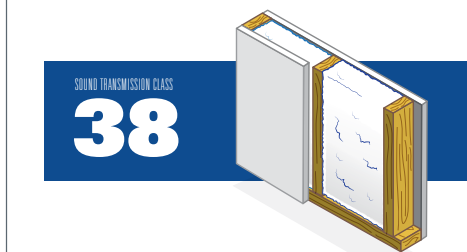
FIBERGLASS

Fiberglass is one of America's most common insulation materials. JM Formaldehyde-free™ thermal and acoustical fiberglass insulation is comprised of long, resilient glass fibers bonded with a thermosetting resin.

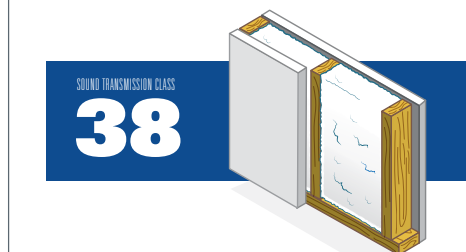
Single Wood Studs | 2" × 4" (38 mm × 89 mm)



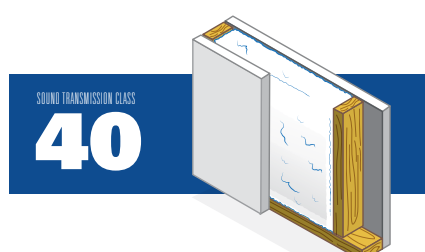
STC	35
Stud Spacing	16" (406 mm) o.c.
Gypsum Thickness	½" (13 mm)
Gypsum Layers	Side A: 1 Side B: 1
Fiberglass Thickness	None
Resilient Channels	No



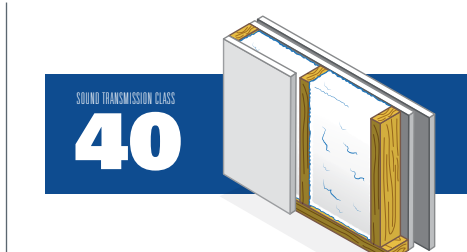
STC	38
Stud Spacing	16" (406 mm) o.c.
Gypsum Thickness	½" (13 mm)
Gypsum Layers	Side A: 1 Side B: 1
Fiberglass Thickness	3⅝" (92 mm) R-13 batts
Resilient Channels	No



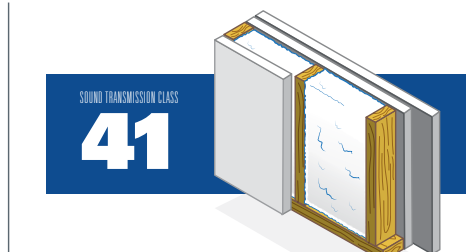
STC	38
Stud Spacing	16" (406 mm) o.c.
Gypsum Thickness	⅝" (16 mm)
Gypsum Layers	Side A: 1 Side B: 1
Fiberglass Thickness	3⅝" (92 mm) R-13 batts
Resilient Channels	No



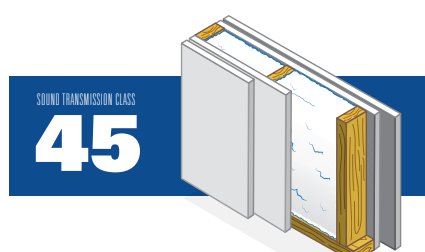
STC	40
Stud Spacing	24" (610 mm) o.c.
Gypsum Thickness	⅝" (16 mm)
Gypsum Layers	Side A: 1 Side B: 1
Fiberglass Thickness	3⅝" (92 mm) R-13 batts
Resilient Channels	No



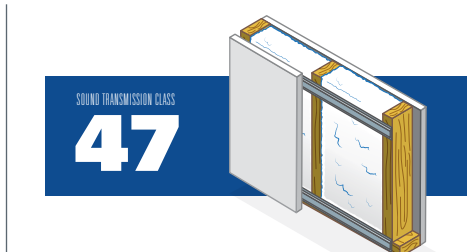
STC	40
Stud Spacing	16" (406 mm) o.c.
Gypsum Thickness	½" (13 mm)
Gypsum Layers	Side A: 1 Side B: 2
Fiberglass Thickness	3⅝" (92 mm) R-13 batts
Resilient Channels	No



STC	41
Stud Spacing	16" (406 mm) o.c.
Gypsum Thickness	⅝" (16 mm)
Gypsum Layers	Side A: 1 Side B: 2
Fiberglass Thickness	3⅝" (92 mm) R-13 batts
Resilient Channels	No



STC	45
Stud Spacing	16" (406 mm) o.c.
Gypsum Thickness	½" (13 mm)
Gypsum Layers	Side A: 2 Side B: 2
Fiberglass Thickness	3⅝" (92 mm) R-13 batts
Resilient Channels	No

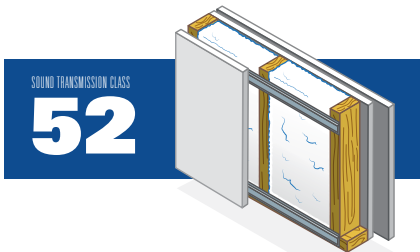


STC	47
Stud Spacing	16" (406 mm) o.c.
Gypsum Thickness	½" (13 mm)
Gypsum Layers	Side A: 1 Side B: 1
Fiberglass Thickness	3⅝" (92 mm) R-13 batts
Resilient Channels	24" (610 mm) o.c. (vertical)

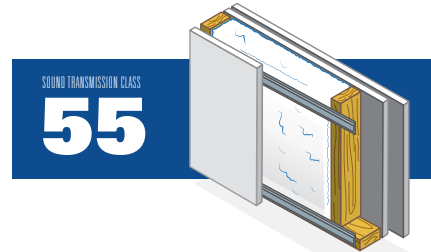


STC	52
Stud Spacing	24" (610 mm) o.c.
Gypsum Thickness	⅝" (16 mm)
Gypsum Layers	Side A: 1 Side B: 1
Fiberglass Thickness	3⅝" (92 mm) R-13 batts
Resilient Channels	24" (610 mm) o.c. (vertical)

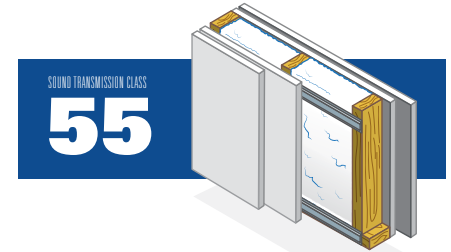
Single Wood Studs | 2" × 4" (38 mm × 89 mm)



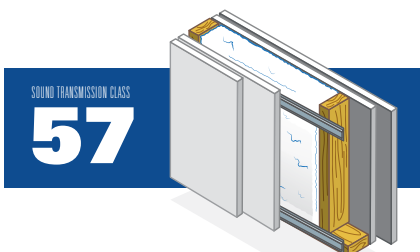
STC	52
Stud Spacing	16" (406 mm) o.c.
Gypsum Thickness	½" (13 mm)
Gypsum Layers	Side A: 1 Side B: 2
Fiberglass Thickness	3¾" (92 mm) R-13 batts
Resilient Channels	24" (610 mm) o.c. (vertical)



STC	55
Stud Spacing	24" (610 mm) o.c.
Gypsum Thickness	½" (13 mm)
Gypsum Layers	Side A: 1 Side B: 2
Fiberglass Thickness	3¾" (92 mm) R-13 batts
Resilient Channels	24" (610 mm) o.c. (vertical)



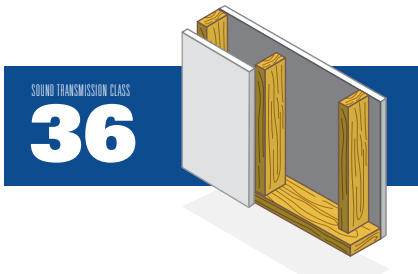
STC	55
Stud Spacing	16" (406 mm) o.c.
Gypsum Thickness	½" (13 mm)
Gypsum Layers	Side A: 1 Side B: 2
Fiberglass Thickness	3¾" (92 mm) R-13 batts
Resilient Channels	24" (610 mm) o.c. (vertical)



STC	57
Stud Spacing	24" (610 mm) o.c.
Gypsum Thickness	½" (13 mm)
Gypsum Layers	Side A: 2 Side B: 2
Fiberglass Thickness	3¾" (92 mm) R-13 batts
Resilient Channels	24" (610 mm) o.c. (vertical)

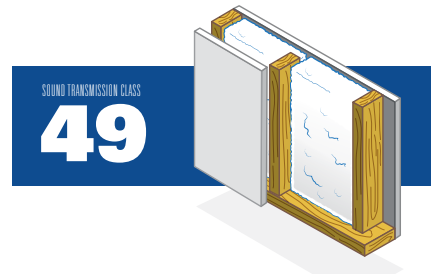
Staggered Wood Studs | 2" x 4" (38 mm x 89 mm)

No Resilient Channels



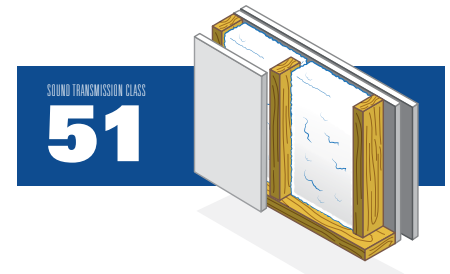
SOUND TRANSMISSION CLASS
36

Stud Spacing	16" (406 mm) o.c.
Gypsum Thickness	½" (13 mm)
Gypsum Layers	Side A: 1 Side B: 1
Fiberglass Thickness	None



SOUND TRANSMISSION CLASS
49

Stud Spacing	16" (406 mm) o.c.
Gypsum Thickness	½" (13 mm)
Gypsum Layers	Side A: 1 Side B: 1
Fiberglass Thickness	3⅝" (92 mm) R-13 batts



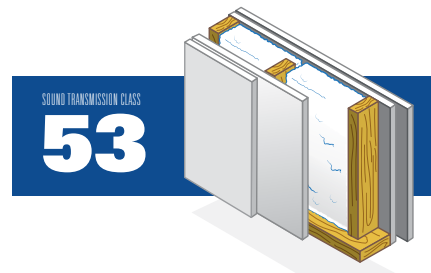
SOUND TRANSMISSION CLASS
51

Stud Spacing	16" (406 mm) o.c.
Gypsum Thickness	½" (13 mm)
Gypsum Layers	Side A: 1 Side B: 2
Fiberglass Thickness	3⅝" (92 mm) R-13 batts



SOUND TRANSMISSION CLASS
52

Stud Spacing	24" (610 mm) o.c.
Gypsum Thickness	½" (13 mm)
Gypsum Layers	Side A: 1 Side B: 1
Fiberglass Thickness	3⅝" (92 mm) R-13 batts



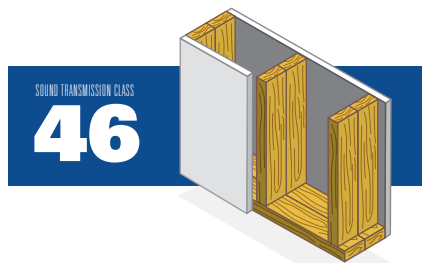
SOUND TRANSMISSION CLASS
53

Stud Spacing	16" (406 mm) o.c.
Gypsum Thickness	½" (13 mm)
Gypsum Layers	Side A: 2 Side B: 2
Fiberglass Thickness	3⅝" (92 mm) R-13 batts

Double Wood Studs

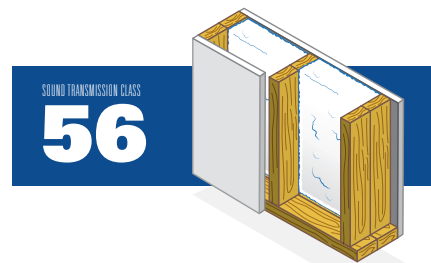
2" x 4" + 2" x 4" (38 mm x 89 mm + 38 mm x 89 mm)

No Resilient Channels



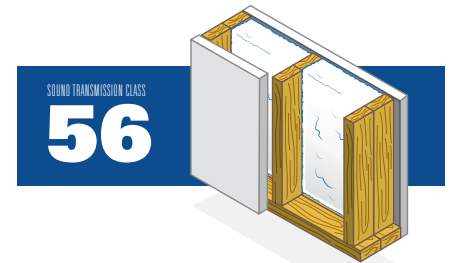
SOUND TRANSMISSION CLASS
46

Stud Spacing	16" (406 mm) o.c.
Gypsum Thickness	½" (13 mm)
Gypsum Layers	Side A: 1 Side B: 1
Fiberglass Thickness	None



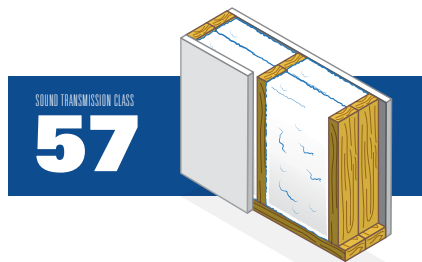
SOUND TRANSMISSION CLASS
56

Stud Spacing	16" (406 mm) o.c.
Gypsum Thickness	½" (13 mm)
Gypsum Layers	Side A: 1 Side B: 1
Fiberglass Thickness	3⅝" (92 mm) R-13 batts



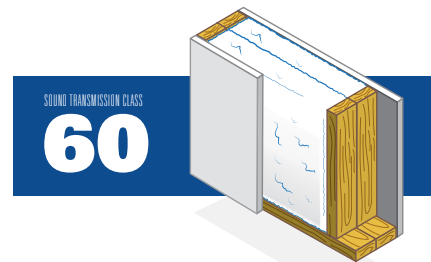
SOUND TRANSMISSION CLASS
56

Stud Spacing	16" (406 mm) o.c.
Gypsum Thickness	⅝" (16 mm)
Gypsum Layers	Side A: 1 Side B: 1
Fiberglass Thickness	3⅝" (92 mm) R-13 batts



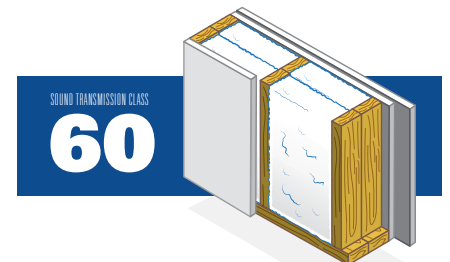
SOUND TRANSMISSION CLASS
57

Stud Spacing	16" (406 mm) o.c.
Gypsum Thickness	½" (13 mm)
Gypsum Layers	Side A: 1 Side B: 1
Fiberglass Thickness	2 x 3⅝" (92 mm) R-13 batts



SOUND TRANSMISSION CLASS
60

Stud Spacing	24" (610 mm) o.c.
Gypsum Thickness	½" (13 mm)
Gypsum Layers	Side A: 1 Side B: 1
Fiberglass Thickness	2 x 3⅝" (92 mm) R-13 batts



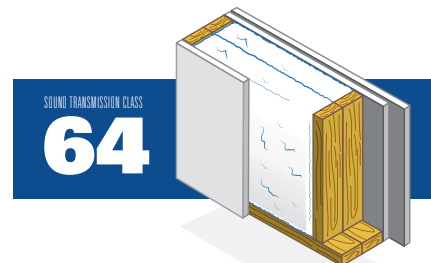
SOUND TRANSMISSION CLASS
60

Stud Spacing	16" (406 mm) o.c.
Gypsum Thickness	½" (13 mm)
Gypsum Layers	Side A: 1 Side B: 2
Fiberglass Thickness	2 x 3⅝" (92 mm) R-13 batts



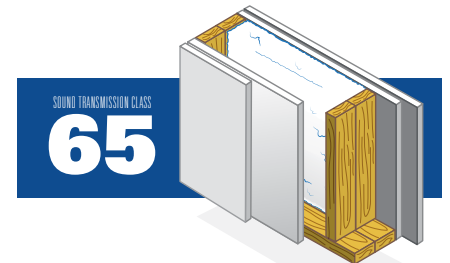
SOUND TRANSMISSION CLASS
63

Stud Spacing	16" (406 mm) o.c.
Gypsum Thickness	½" (13 mm)
Gypsum Layers	Side A: 2 Side B: 2
Fiberglass Thickness	2 x 3⅝" (92 mm) R-13 batts



SOUND TRANSMISSION CLASS
64

Stud Spacing	24" (610 mm) o.c.
Gypsum Thickness	½" (13 mm)
Gypsum Layers	Side A: 1 Side B: 2
Fiberglass Thickness	2 x 3⅝" (92 mm) R-13 batts



SOUND TRANSMISSION CLASS
65

Stud Spacing	24" (610 mm) o.c.
Gypsum Thickness	½" (13 mm)
Gypsum Layers	Side A: 2 Side B: 2
Fiberglass Thickness	2 x 3⅝" (92 mm) R-13 batts

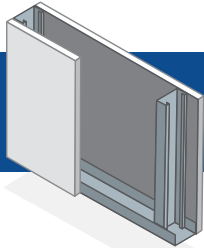
Steel Studs | 2½" (64 mm)

25-Gauge Steel

24" (610 mm) o.c. Stud Spacing

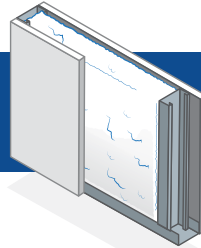
No Resilient Channels

SOUND TRANSMISSION CLASS
36



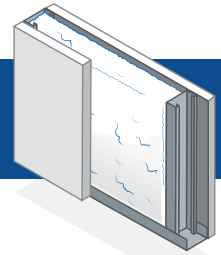
Gypsum Thickness	½" (13 mm)
Gypsum Layers	Side A: 1 Side B: 1
Fiberglass Thickness	None

SOUND TRANSMISSION CLASS
45



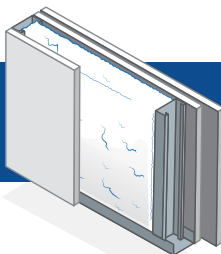
Gypsum Thickness	½" (13 mm)
Gypsum Layers	Side A: 1 Side B: 1
Fiberglass Thickness	2¾" (70 mm) batts

SOUND TRANSMISSION CLASS
47



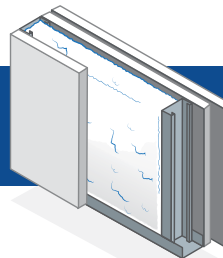
Gypsum Thickness	⅝" (16 mm)
Gypsum Layers	Side A: 1 Side B: 1
Fiberglass Thickness	2¾" (70 mm) batts

SOUND TRANSMISSION CLASS
50



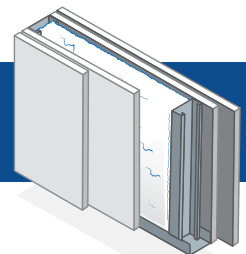
Gypsum Thickness	½" (13 mm)
Gypsum Layers	Side A: 1 Side B: 2
Fiberglass Thickness	2¾" (70 mm) batts

SOUND TRANSMISSION CLASS
52



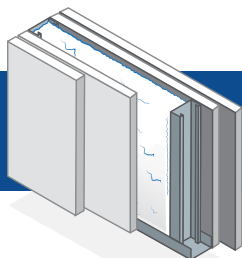
Gypsum Thickness	⅝" (16 mm)
Gypsum Layers	Side A: 1 Side B: 2
Fiberglass Thickness	2¾" (70 mm) batts

SOUND TRANSMISSION CLASS
54



Gypsum Thickness	½" (13 mm)
Gypsum Layers	Side A: 2 Side B: 2
Fiberglass Thickness	2¾" (70 mm) batts

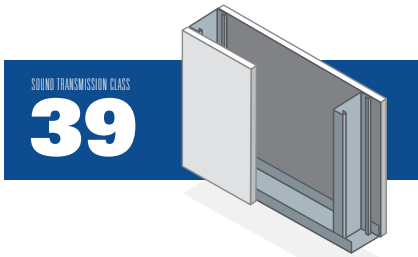
SOUND TRANSMISSION CLASS
57



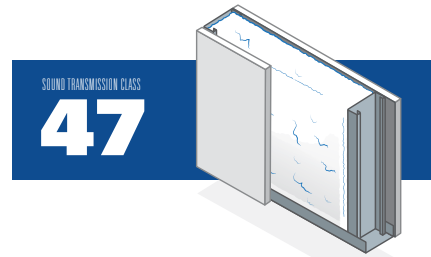
Gypsum Thickness	⅝" (16 mm)
Gypsum Layers	Side A: 2 Side B: 2
Fiberglass Thickness	2¾" (70 mm) batts

Steel Studs | 3⁵/₈" (92 mm)

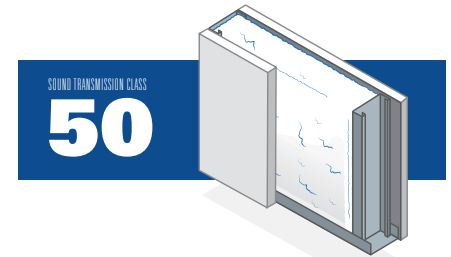
25-Gauge Steel | No Resilient Channels



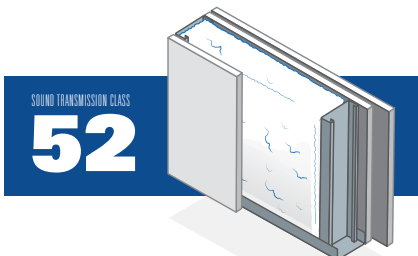
Stud Spacing	24" (610 mm) o.c.
Gypsum Thickness	1/2" (13 mm)
Gypsum Layers	Side A: 1 Side B: 1
Fiberglass Thickness	None



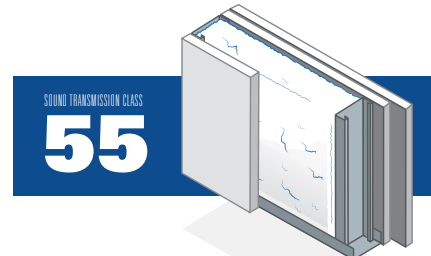
Stud Spacing	24" (610 mm) o.c.
Gypsum Thickness	1/2" (13 mm)
Gypsum Layers	Side A: 1 Side B: 1
Fiberglass Thickness	3 ⁵ / ₈ " (92 mm) R-13 batts



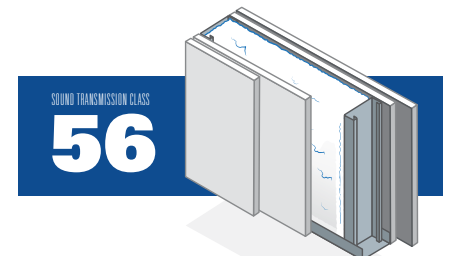
Stud Spacing	24" (610 mm) o.c.
Gypsum Thickness	5/8" (16 mm)
Gypsum Layers	Side A: 1 Side B: 1
Fiberglass Thickness	3 ⁵ / ₈ " (92 mm) R-13 batts



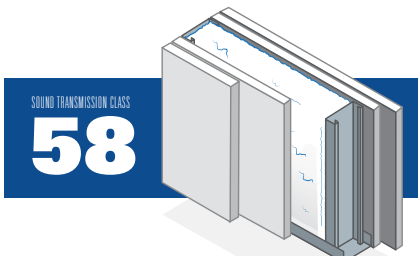
Stud Spacing	16" (406 mm) o.c.
Gypsum Thickness	1/2" (13 mm)
Gypsum Layers	Side A: 1 Side B: 2
Fiberglass Thickness	3 ⁵ / ₈ " (92 mm) R-13 batts



Stud Spacing	24" (610 mm) o.c.
Gypsum Thickness	5/8" (16 mm)
Gypsum Layers	Side A: 1 Side B: 2
Fiberglass Thickness	3 ⁵ / ₈ " (92 mm) R-13 batts



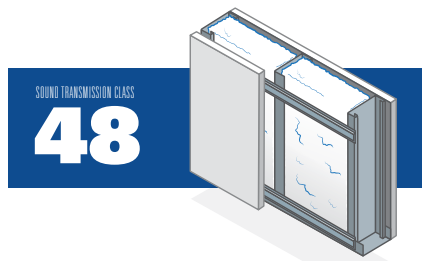
Stud Spacing	24" (610 mm) o.c.
Gypsum Thickness	5/8" (13 mm)
Gypsum Layers	Side A: 2 Side B: 2
Fiberglass Thickness	3 ⁵ / ₈ " (92 mm) R-13 batts



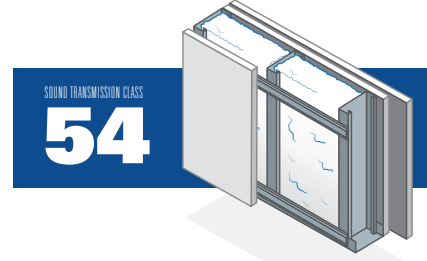
Stud Spacing	24" (610 mm) o.c.
Gypsum Thickness	5/8" (16 mm)
Gypsum Layers	Side A: 2 Side B: 2
Fiberglass Thickness	3 ⁵ / ₈ " (92 mm) R-13 batts

Steel Studs | 3⁵/₈" (92 mm)

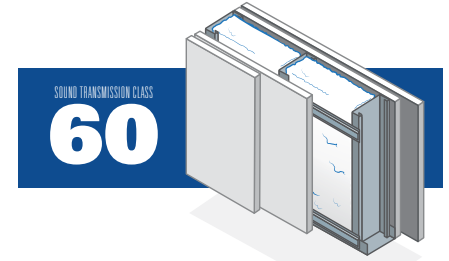
20-Gauge Steel



STC	48
Stud Spacing	16" (406 mm) o.c.
Gypsum Thickness	1/2" (13 mm)
Gypsum Layers	Side A: 1 Side B: 1
Fiberglass Thickness	3 ⁵ / ₈ " (92 mm) R-13 batts
Resilient Channels	24" (610 mm) o.c. (vertical)



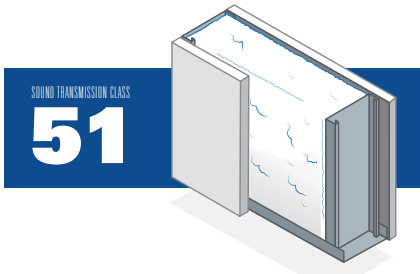
STC	54
Stud Spacing	16" (406 mm) o.c.
Gypsum Thickness	1/2" (13 mm)
Gypsum Layers	Side A: 1 Side B: 2
Fiberglass Thickness	3 ⁵ / ₈ " (92 mm) R-13 batts
Resilient Channels	24" (610 mm) o.c. (vertical)



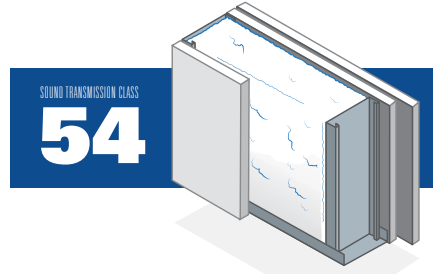
STC	60
Stud Spacing	16" (406 mm) o.c.
Gypsum Thickness	1/2" (13 mm)
Gypsum Layers	Side A: 2 Side B: 2
Fiberglass Thickness	3 ⁵ / ₈ " (92 mm) R-13 batts
Resilient Channels	24" (610 mm) o.c. (vertical)

Steel Studs | 6" (152 mm)

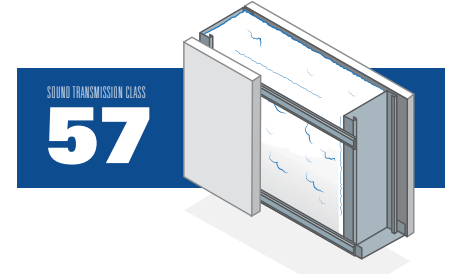
25-Gauge Steel	24" (610 mm) o.c. Stud Spacing	5/8" (16 mm) thick Gypsum Board	6 1/2" (165 mm) thick R-19 Fiberglass Batts
----------------	--------------------------------	---------------------------------	---------------------------------------------



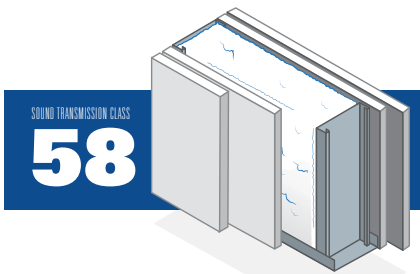
Gypsum Layers	Side A: 1
	Side B: 1
Resilient Channels	No



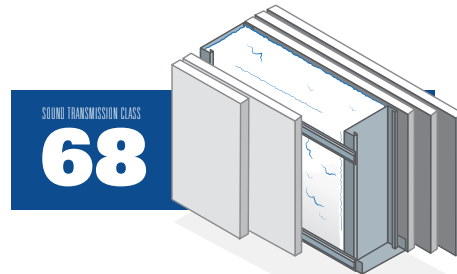
Gypsum Layers	Side A: 1
	Side B: 2
Resilient Channels	No



Gypsum Layers	Side A: 1
	Side B: 1
Resilient Channels	24" (610 mm) o.c. (vertical)



Gypsum Layers	Side A: 2
	Side B: 2
Resilient Channels	No

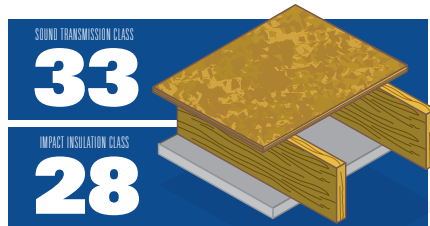


Gypsum Layers	Side A: 2
	Side B: 3
Resilient Channels	24" (610 mm) o.c. (vertical)

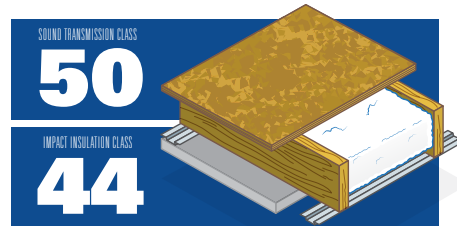
Floor/Ceiling Assemblies

16" (406 mm) o.c. Joist Spacing

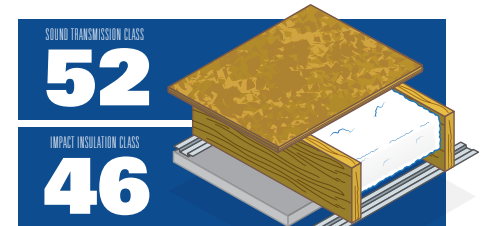
5/8" (16 mm) Gypsum Board Ceiling



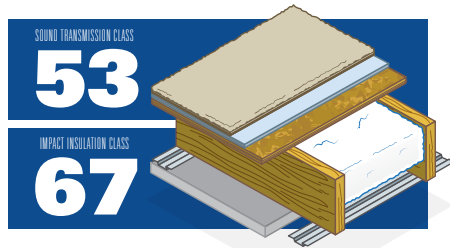
Wood Joist	2" × 10" (38 mm × 235 mm)
Floor Topping	1 ⁹ / ₃₂ " OSB subfloor
Fiberglass Thickness	None
Resilient Channels	No



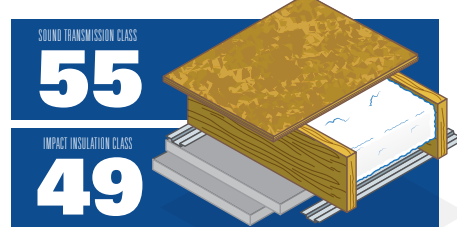
Wood Joist	2" × 8" (38 mm × 184 mm)
Floor Topping	1 ⁹ / ₃₂ " OSB subfloor
Fiberglass Thickness	6 ¹ / ₂ " (165 mm) R-19 batts
Resilient Channels	24" (610 mm) o.c. (vertical)



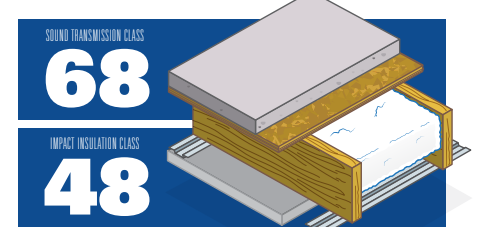
Wood Joist	2" × 10" (38 mm × 235 mm)
Floor Topping	1 ⁹ / ₃₂ " OSB subfloor
Fiberglass Thickness	6 ¹ / ₂ " (165 mm) R-19 batts
Resilient Channels	24" (610 mm) o.c. (vertical)



Wood Joist	2" × 10" (38 mm × 235 mm)
Floor Topping	1 ⁹ / ₃₂ " OSB subfloor + pad + carpet
Fiberglass Thickness	6 ¹ / ₂ " (165 mm) R-19 batts
Resilient Channels	24" (610 mm) o.c. (vertical)



Wood Joist	2" × 10" (38 mm × 235 mm)
Floor Topping	1 ⁹ / ₃₂ " OSB subfloor
Fiberglass Thickness	6 ¹ / ₂ " (165 mm) R-19 batts
Resilient Channels	24" (610 mm) o.c. (vertical)



Wood Joist	2" × 10" (38 mm × 235 mm)
Floor Topping	1 ⁹ / ₃₂ " OSB subfloor + 1 ³ / ₈ " concrete
Fiberglass Thickness	6 ¹ / ₂ " (165 mm) R-19 batts
Resilient Channels	24" (610 mm) o.c. (vertical)

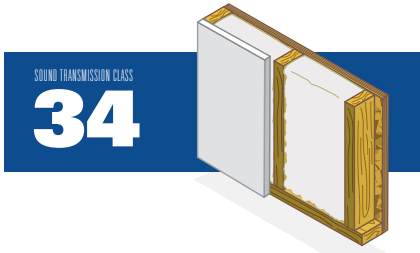
SPRAY FOAM

Johns Manville spray foam delivers high yield, superior performance and exceptional sprayability, making it an ideal choice for air-sealing and insulating energy-efficient buildings.

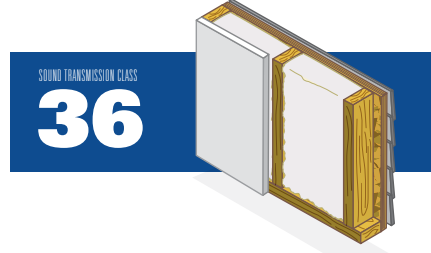
Single Wood Studs

Single interior layer 1/2" (13 mm) Gypsum Board

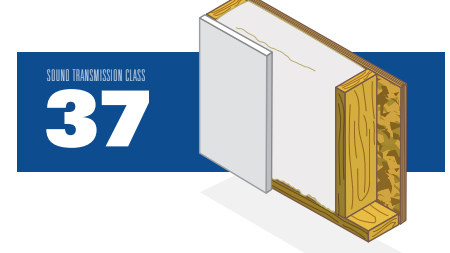
1 9/32" (14 mm) exterior OSB Sheathing



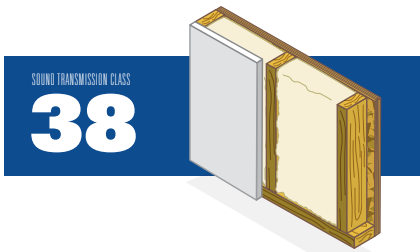
STC	34
Stud	2" x 4" (38 mm x 89 mm)
Stud Spacing	16" (406 mm) o.c.
Cavity Insulation	Closed-cell SPF
Cladding	N.A.



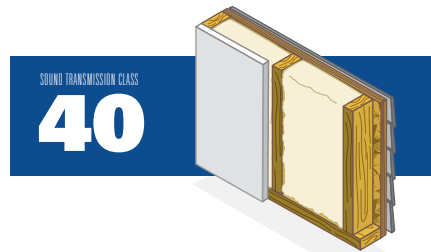
STC	36
Stud	2" x 4" (38 mm x 89 mm)
Stud Spacing	16" (406 mm) o.c.
Cavity Insulation	Closed-cell SPF
Cladding	Fiber cement lap siding



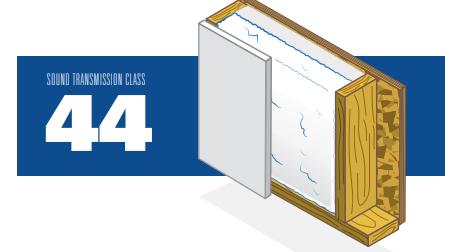
STC	37
Stud	2" x 6" (38 mm x 140 mm)
Stud Spacing	24" (610 mm) o.c.
Cavity Insulation	Closed-cell SPF
Cladding	N.A.



STC	38
Stud	2" x 4" (38 mm x 89 mm)
Stud Spacing	16" (406 mm) o.c.
Cavity Insulation	Open-cell SPF
Cladding	N.A.



STC	40
Stud	2" x 4" (38 mm x 89 mm)
Stud Spacing	16" (406 mm) o.c.
Cavity Insulation	Open-cell SPF
Cladding	Fiber cement lap siding

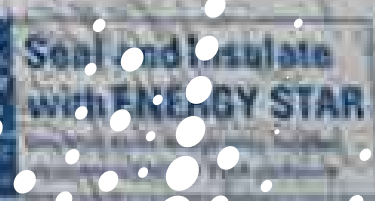


STC	44
Stud	2" x 6" (38 mm x 140 mm)
Stud Spacing	24" (610 mm) o.c.
Cavity Insulation	Half closed-cell SPF & half R-13 fiberglass batt
Cladding	N.A.



SHEATHING CONTINUOUS INSULATION

Rigid polyisocyanurate foam sheathing insulation for use in commercial and residential construction where continuous insulation and/or high thermal efficiency is required.



100% Polyisocyanurate
 2019 National Green Building Conference
 2019 GreenSource All Rights Reserved

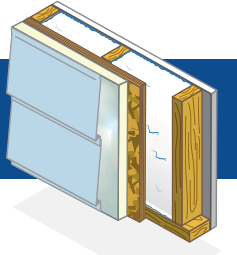
10

Exterior Residential Walls

2" x 4" (38 mm x 89 mm) Wood Studs	16" (406 mm) o.c. Stud Spacing	Single interior layer 1/2" (13 mm) Gypsum Board
3 5/8" (92 mm) R-13 Fiberglass Batts	7/16" (11 mm) OSB Exterior Sheathing	AP™ Foil-Faced Foam Sheathing Continuous Insulation

SOUND TRANSMISSION CLASS

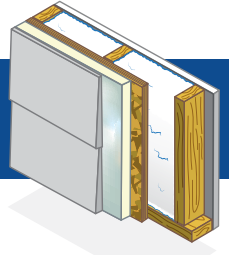
34



Resilient Channels	No
Continuous Insulation	R-5 AP Foil
Cladding	Vinyl lap siding

SOUND TRANSMISSION CLASS

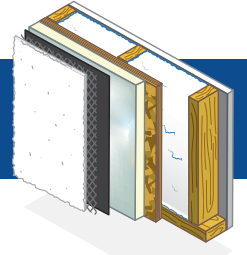
37



Resilient Channels	No
Continuous Insulation	R-5 AP Foil
Cladding	Fiber cement lap siding

SOUND TRANSMISSION CLASS

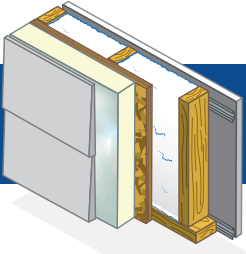
45



Resilient Channels	No
Continuous Insulation	R-5 AP Foil
Cladding	7/8" stucco

SOUND TRANSMISSION CLASS

45



Resilient Channels	24" (610 mm) o.c. (vertical)
Continuous Insulation	R-13 AP Foil
Cladding	Vinyl lap siding

SOUND TRANSMISSION CLASS

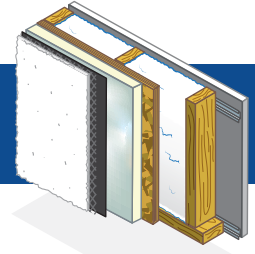
47



Resilient Channels	24" (610 mm) o.c. (vertical)
Continuous Insulation	R-13 AP Foil
Cladding	Fiber cement lap siding

SOUND TRANSMISSION CLASS

55



Resilient Channels	24" (610 mm) o.c. (vertical)
Continuous Insulation	R-5 AP Foil
Cladding	7/8" stucco



Johns Manville
A Berkshire Hathaway Company

Visit our website at www.JM.com or call 800 654 3103

Building Insulation Division P.O. Box 5108 | Denver, CO 80217-5108

Technical specifications as shown in this literature are intended to be used as general guidelines only. Please refer to the Safety Data Sheet and product label prior to using any product. The physical and chemical properties of thermal and acoustical fiberglass insulation listed herein represent typical, average values obtained in accordance with accepted test methods and are subject to normal manufacturing variations. They are supplied as a technical service and are subject to change without notice.

All Johns Manville products are sold subject to Johns Manville's standard Terms and Conditions, which includes a Limited Warranty and Limitation of Remedy. For a copy of the Johns Manville standard Terms and Conditions or for information on other Johns Manville insulation and systems, visit www.JM.com/terms-conditions or call 800 654 3103.

© 2019 Johns Manville. All Rights Reserved.