



# ASSEMBLY REFERENCE GUIDE

INTERNAL REFERENCE COPY



**LP** **FlameBlock**<sup>®</sup>  
FIRE-RATED SHEATHING

LP<sup>®</sup> FLAMEBLOCK<sup>®</sup> FIRE-RATED SHEATHING FEATURES LP'S PROPRIETARY NONCOMBUSTIBLE FIBERGLASS REINFORCED PYROTITE<sup>®</sup> COATING.

LOOK BENEATH THE NONCOMBUSTIBLE PYROTITE COATING AND YOU'LL FIND THE STRENGTH OF LP<sup>®</sup> ENGINEERED STRAND TECHNOLOGY (EST).





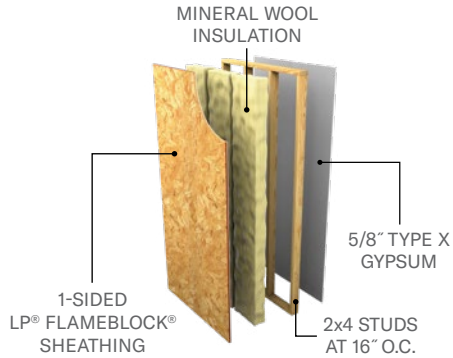
---

# SINGLE-FAMILY

# V340

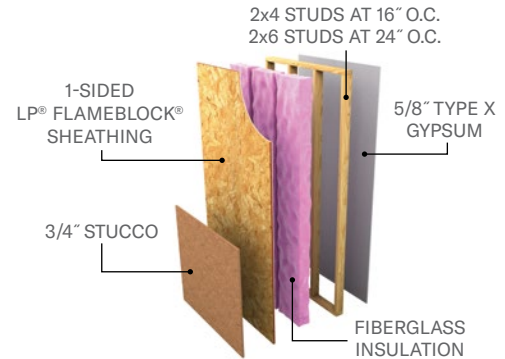
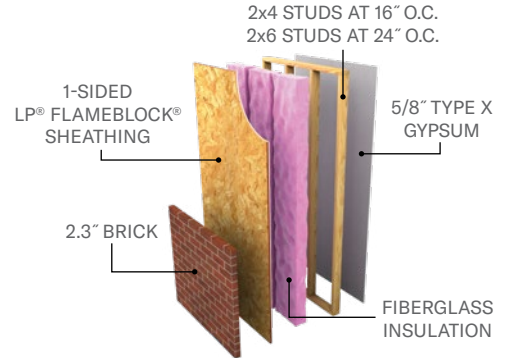
## 1-HOUR EITHER SIDE

Note: Replaces previous Intertek Design Number LPB/WPPS 60-01



# U348

## 1-HOUR EITHER SIDE



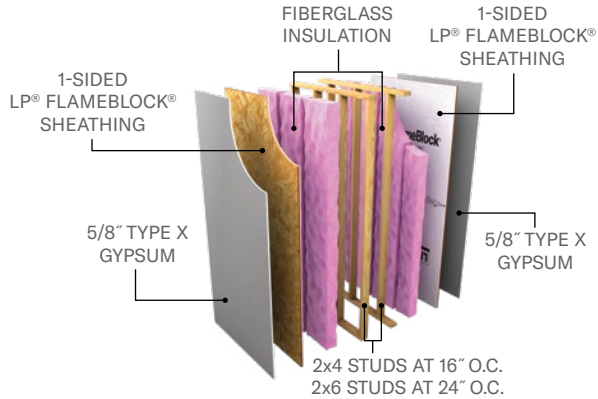


---

# TOWNHOUSE SEPARATIONS

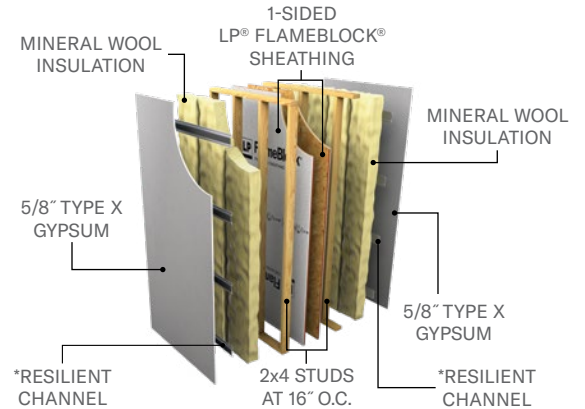
## U350 A

2-HOUR EITHER SIDE



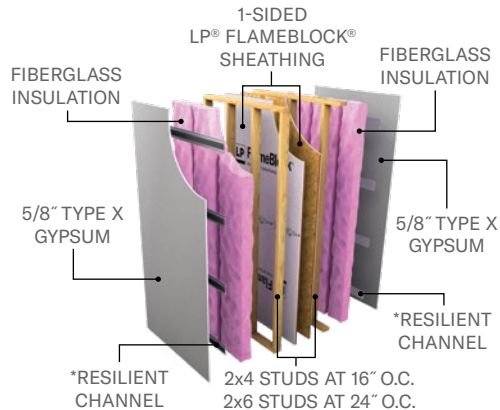
## V340

TWO 1-HOUR WALLS



## U350 B

2-HOUR EITHER SIDE



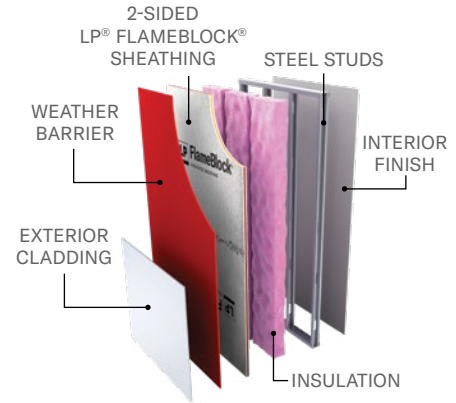
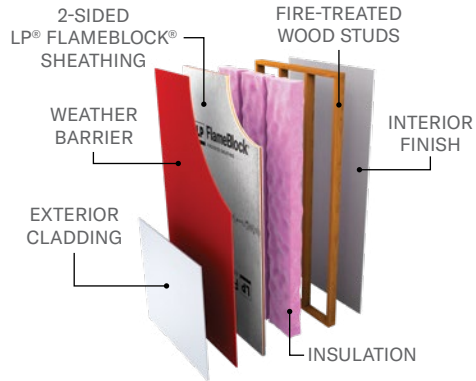


---

# TYPE I & II CONSTRUCTION

# TYPE I & II NON-BEARING EXTERIOR WALL

---





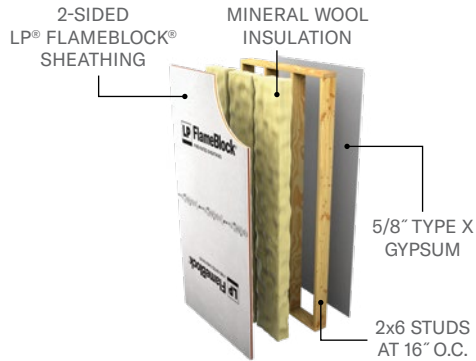


---

# TYPE III & V CONSTRUCTION

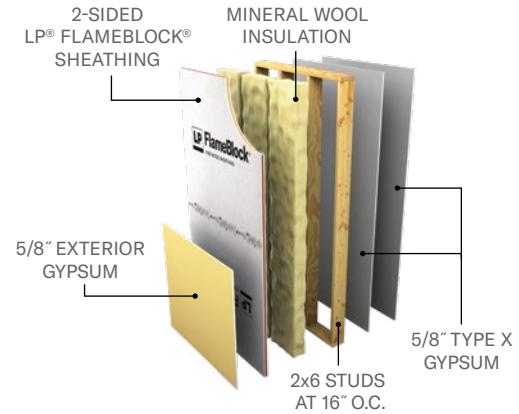
## V337

### 1-HOUR EITHER SIDE



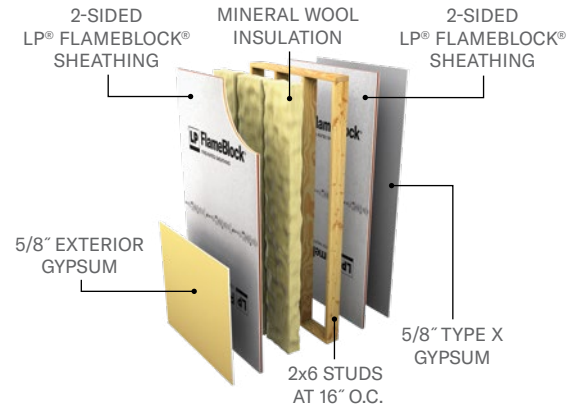
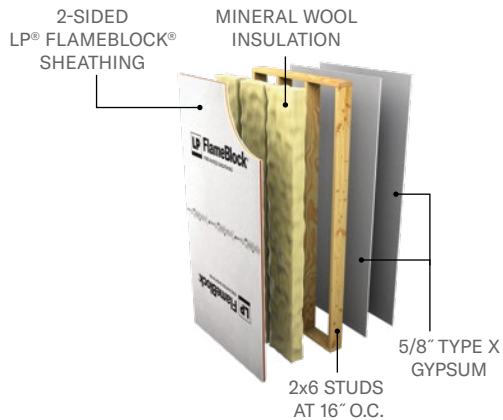
## V337

### 2-HOUR EITHER SIDE



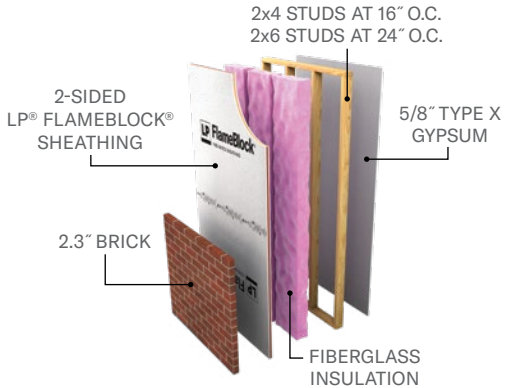
## V337

### 2-HOUR INTERIOR 1-HOUR EXTERIOR



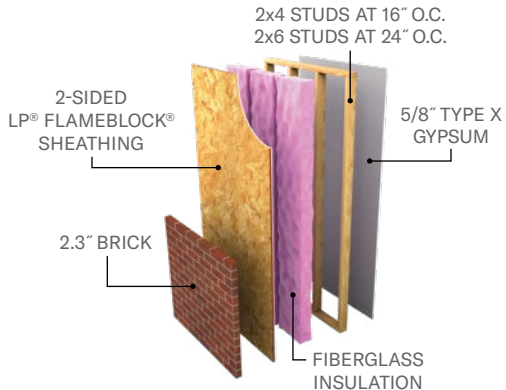
## U348 TYPE III

### 1-HOUR EITHER SIDE



## U348 TYPE V

### 1-HOUR EITHER SIDE



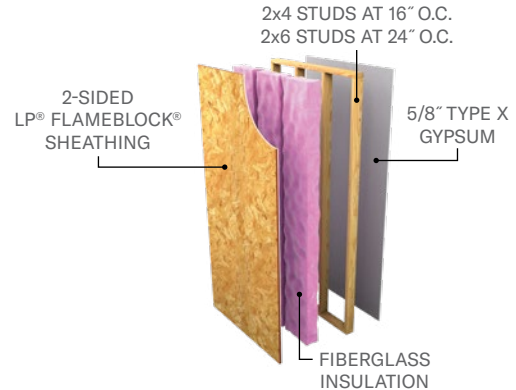
## U348 TYPE III

### 1-HOUR INTERIOR RESISTANCE ONLY



## U348 TYPE V

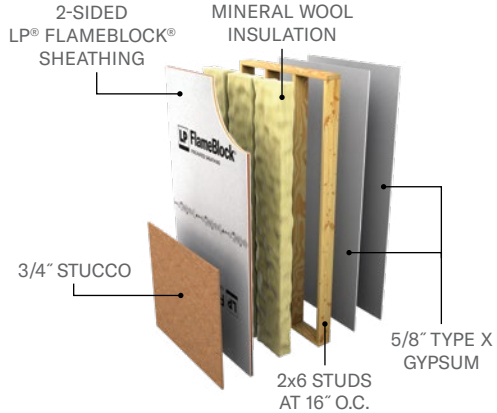
### 1-HOUR INTERIOR RESISTANCE ONLY



## V337

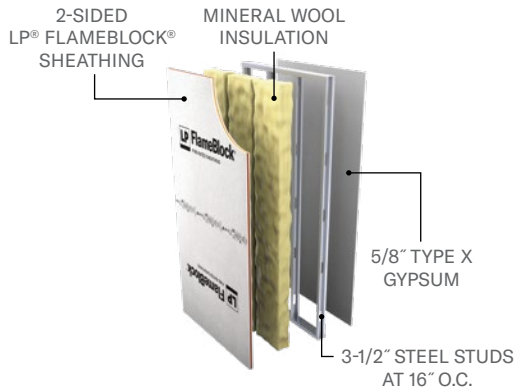
### 2-HOUR EITHER SIDE

Note: Base layer of interior gypsum may be replaced with 2-sided LP FlameBlock sheathing.



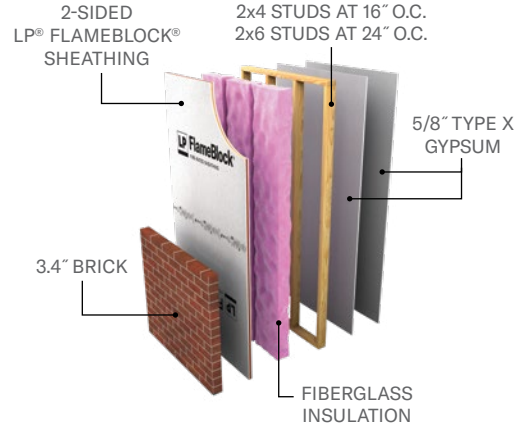
## V337

### 1-HOUR EITHER SIDE



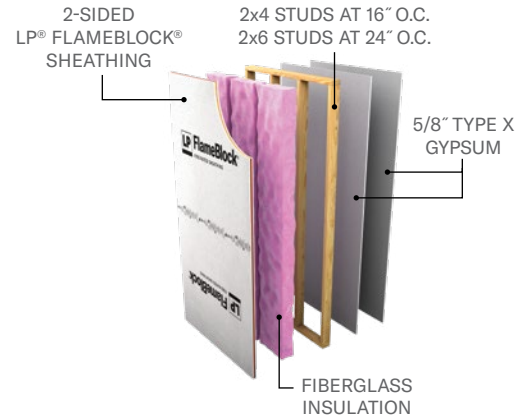
## U349

### 2-HOUR EITHER SIDE



## U349

### 2-HOUR INTERIOR RESISTANCE ONLY



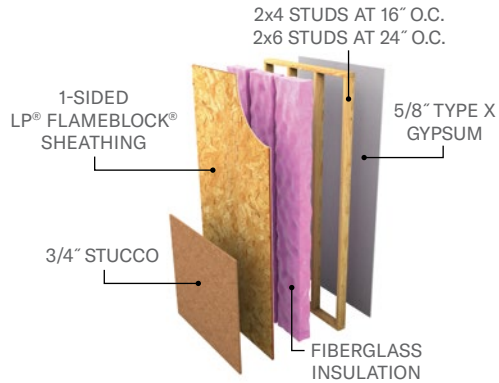


---

# TYPE V CONSTRUCTION

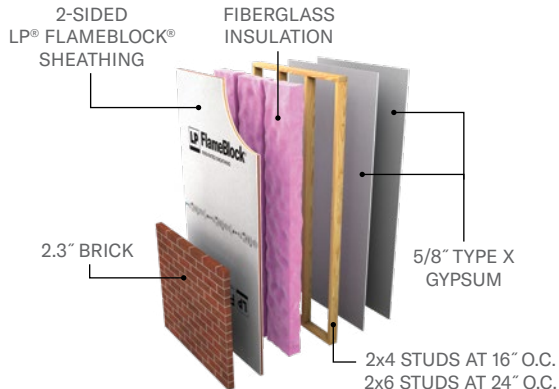
## U348

1-HOUR EITHER SIDE



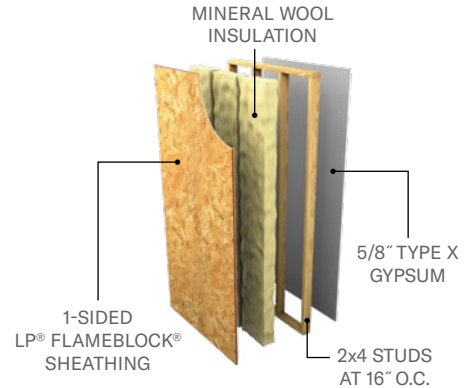
## U349

2-HOUR INTERIOR  
1-HOUR EXTERIOR



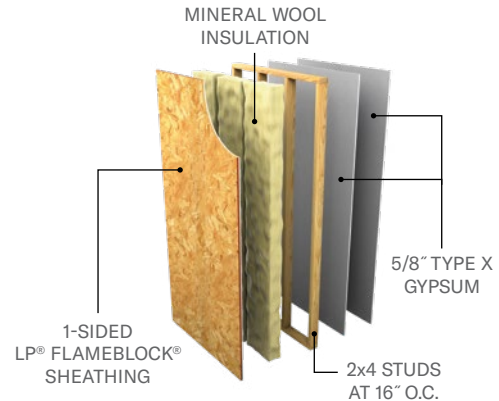
## V340

1-HOUR EITHER SIDE



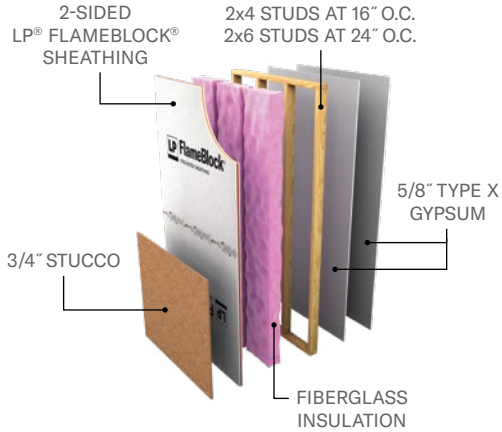
## V340

2-HOUR INTERIOR  
1-HOUR EXTERIOR



# U349

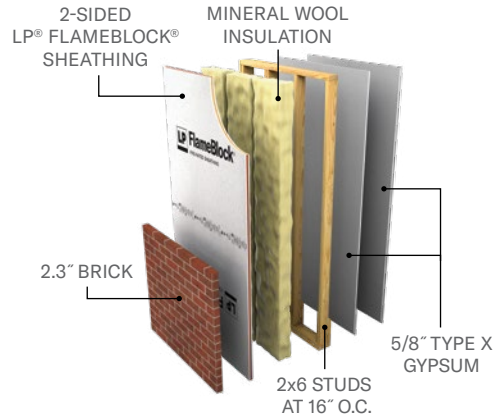
**2-HOUR INTERIOR  
1-HOUR EXTERIOR**



# V337

**2-HOUR EITHER SIDE**

Note: Base layer of interior gypsum may be replaced with 2-sided LP FlameBlock sheathing.





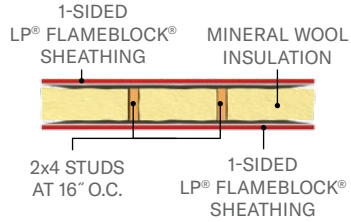
---

# ASSEMBLIES WOOD STUDS



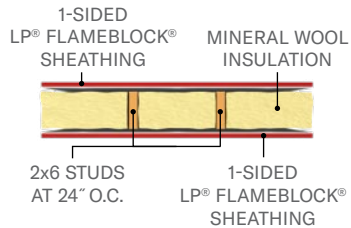
## V338

45-MINUTE EITHER SIDE



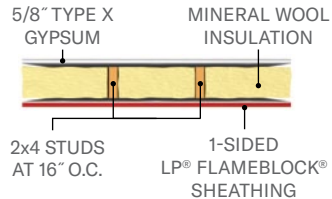
## V339

45-MINUTE EITHER SIDE



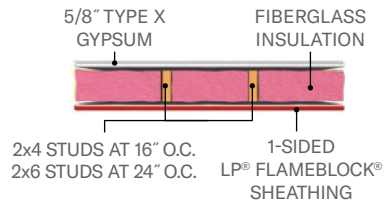
## V340

1-HOUR EITHER SIDE



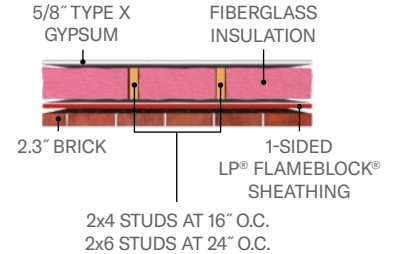
## U348

1-HOUR INTERIOR RESISTANCE ONLY



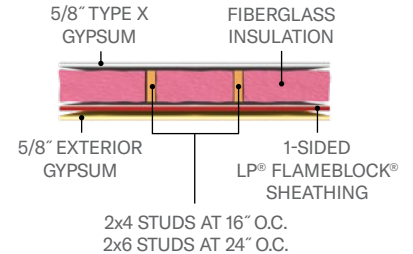
## U348

1-HOUR EITHER SIDE



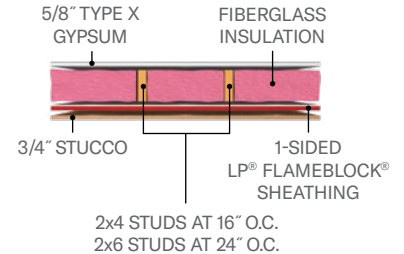
## U348

1-HOUR EITHER SIDE



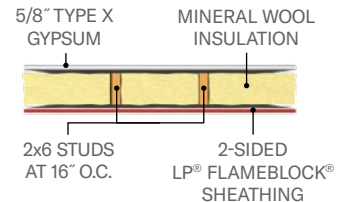
## U348

1-HOUR EITHER SIDE



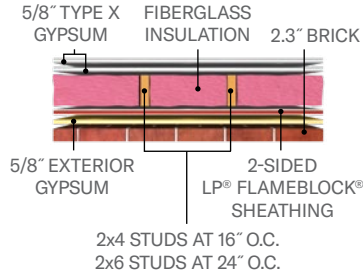
## V337

1-HOUR EITHER SIDE



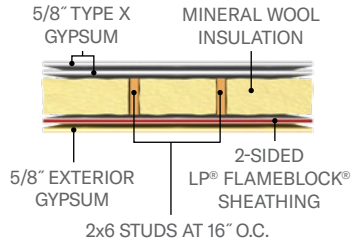
## U349

2-HOUR EITHER SIDE



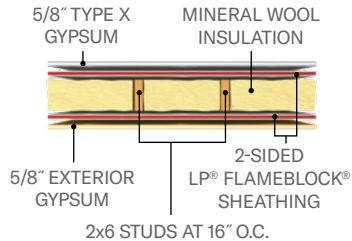
## V337

2-HOUR EITHER SIDE



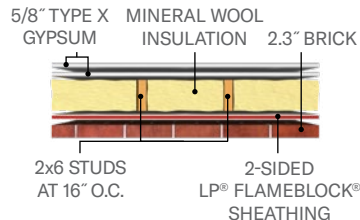
## V337

2-HOUR EITHER SIDE



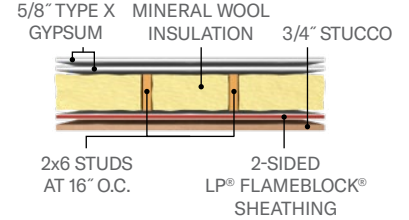
## V337

2-HOUR EITHER SIDE



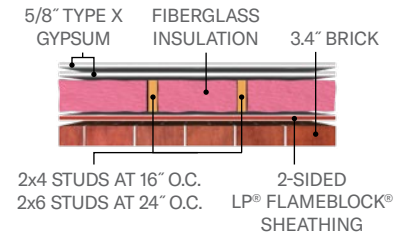
## V337

2-HOUR EITHER SIDE



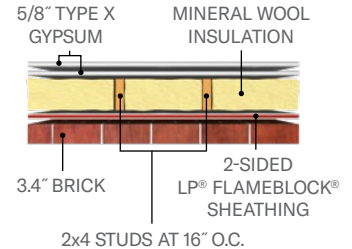
## U349

2-HOUR EITHER SIDE



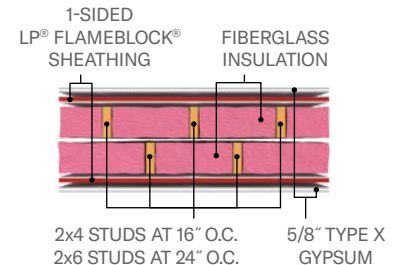
## V340

2-HOUR EITHER SIDE



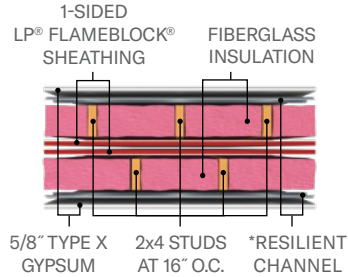
## U350 A

2-HOUR EITHER SIDE



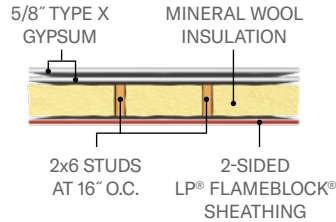
## U350 B

2-HOUR EITHER SIDE



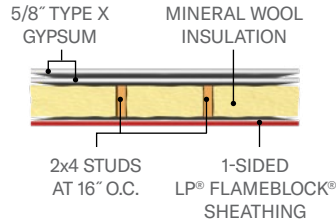
## V337

2-HOUR INTERIOR  
1-HOUR EXTERIOR



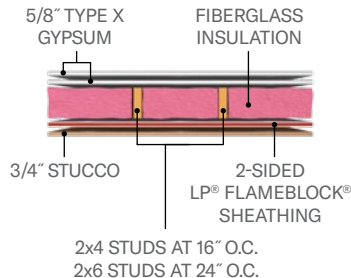
## V340

2-HOUR INTERIOR  
1-HOUR EXTERIOR



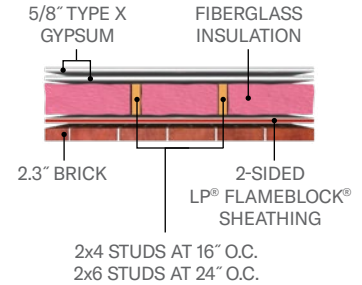
## U349

2-HOUR INTERIOR  
1-HOUR EXTERIOR



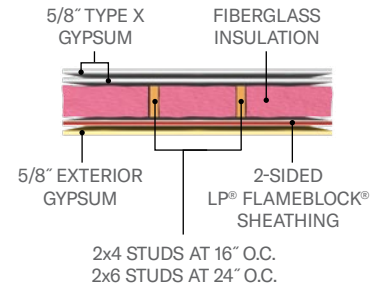
## U349

2-HOUR INTERIOR  
1-HOUR EXTERIOR



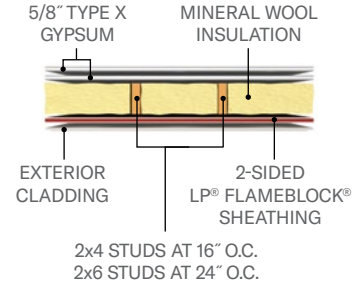
## U349

2-HOUR INTERIOR  
1-HOUR EXTERIOR



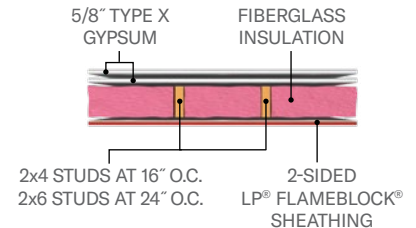
## W408

2-HOUR INTERIOR  
1-HOUR EXTERIOR



## U349

2-HOUR INTERIOR  
RESISTANCE ONLY



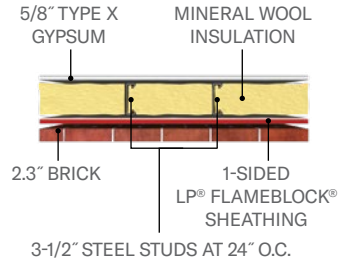


---

# ASSEMBLIES STEEL STUDS

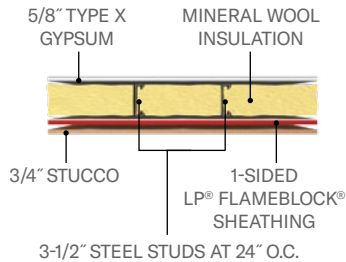
## U348

1-HOUR EITHER SIDE



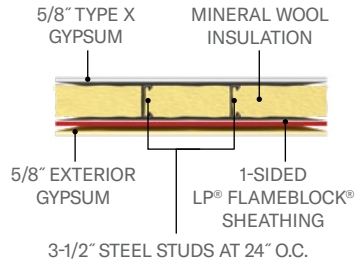
## U348

1-HOUR EITHER SIDE



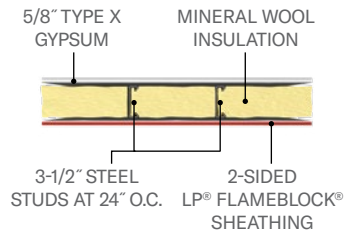
## U348

1-HOUR EITHER SIDE



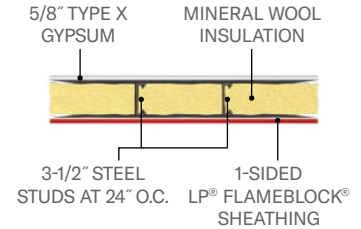
## V337

1-HOUR EITHER SIDE



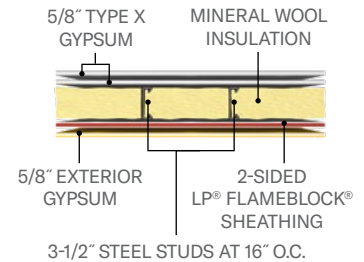
## U348

1-HOUR INTERIOR RESISTANCE ONLY



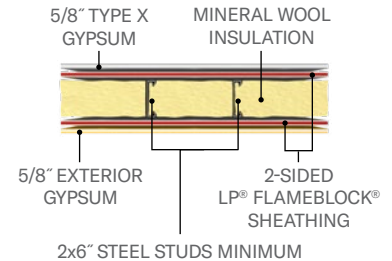
## V337

2-HOUR EITHER SIDE



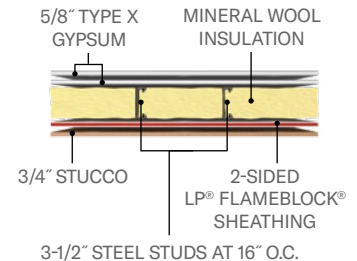
## V337

2-HOUR EITHER SIDE



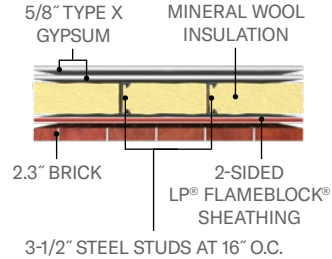
## V337

2-HOUR EITHER SIDE



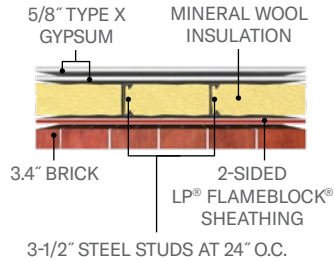
## V337

2-HOUR EITHER SIDE



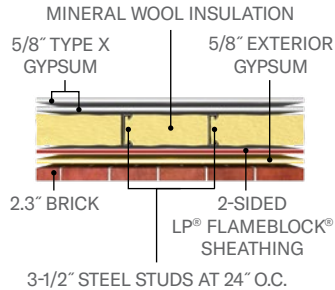
## U349

2-HOUR EITHER SIDE



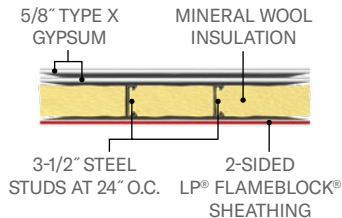
## U349

2-HOUR EITHER SIDE



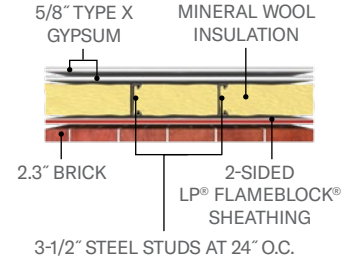
## U349

2-HOUR INTERIOR RESISTANCE ONLY



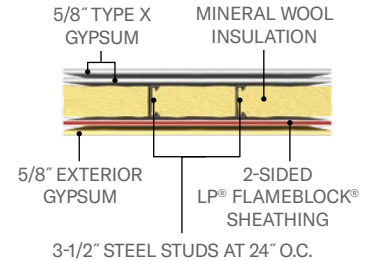
## U349

2-HOUR INTERIOR  
1-HOUR EXTERIOR



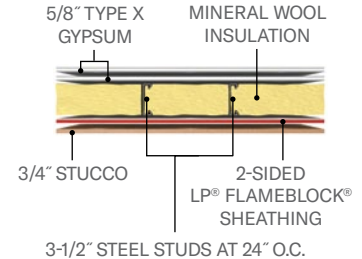
## U349

2-HOUR INTERIOR  
1-HOUR EXTERIOR



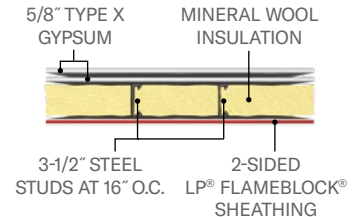
## U349

2-HOUR INTERIOR  
1-HOUR EXTERIOR



## V337

2-HOUR INTERIOR  
1-HOUR EXTERIOR



# Code Compliance and Fire Performance

## **Certification and Testing**

LP® FlameBlock® Fire-Rated Sheathing is evaluated to meet code requirements for fire-resistant construction as a component of 1-hour and 2-hour fire-resistance-rated wall assemblies.

## **Relevant Listings/Assemblies**

Relevant Assemblies

UL® Listing BXUV.U348

UL® Listing BXUV.U349

UL® Listing BXUV.U350

UL® Listing BXUV.V337

UL® Listing BXUV.V338

UL® Listing BXUV.V339

UL® Listing BXUV.W408

## **Moisture Exposure**

LP FlameBlock panels have the Exposure 1 classification signifying that the OSB substrate is intended to resist the effects of moisture on structural performance during typical construction exposure to weather. The fire resistance of the Pyrotite® coating is also not impacted by exposure to moisture during construction.



PROVEN TO SLOW DOWN THE SPREAD OF FLAMES.

When it comes to defending your build from fire, LP® FlameBlock® Fire-Rated Sheathing combines proven flame-spread and burn-through resistance in one panel. Designed for 1-hour and 2-hour wall assemblies as well as in roof deck applications, it delivers exceptional strength and integrity to give you greater design flexibility on every build.

**Phone: 1-888-820-0325**

**Fax: 1-877-523-7192**

**Email: [customer.support@lpcorp.com](mailto:customer.support@lpcorp.com)**

**▲ WARNING:** Drilling, sawing, sanding or machining wood products can expose you to wood dust, a substance known to the State of California to cause cancer. Avoid inhaling wood dust or use a dust mask or other safeguards for personal protection. For more information, go to [www.P65Warnings.ca.gov/wood](http://www.P65Warnings.ca.gov/wood).

© 2022 Louisiana-Pacific Corporation. All rights reserved. APA is a registered trademark of APA – The Engineered Wood Association. Intertek is a registered trademark of Intertek Group, PLC. UL is a registered trademark of UL LLC. ICC-ES is a registered trademark of ICC Evaluation Service, LLC. All other trademarks are owned by Louisiana-Pacific Corporation.

LPFB0162 8/22

Find all LP® FlameBlock® product literature at [LPCORP.COM/FLAMEBLOCK](http://LPCORP.COM/FLAMEBLOCK)





**FlameBlock®**

FIRE-RATED SHEATHING