

Technical Note No. 038



“J” Shaped Flashing over LP® SmartSide® Trim installed Horizontally

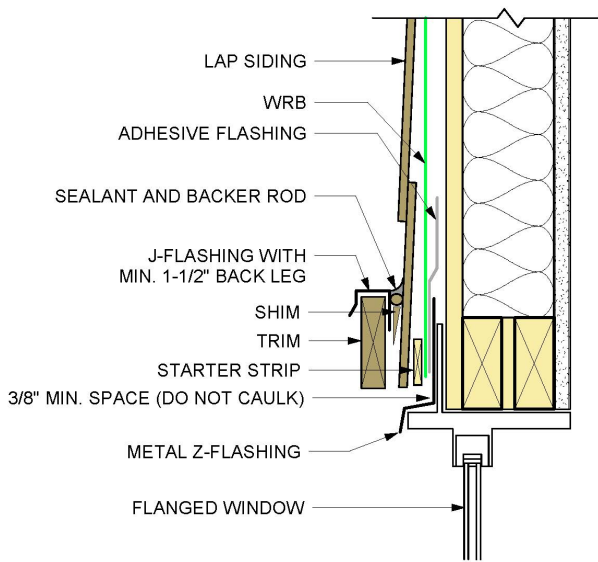
This Technical Note is an addendum to the LP® SmartSide® Trim and Fascia Application Instructions. It is intended to provide alternative flashing options for LP SmartSide Trim installed horizontally. The Instructions remain effective except as may be modified by this Note. Refer to the Instructions for all other aspects of trim installation.

Flashing Purpose:

- International Residential Code, Section 703.4 requires that flashing be continuous over all projecting wood trim
- The flashing requirement directs any liquid water behind the siding, to the surface of the exterior wall finish. Additionally flashing provides protection to trim from resting water

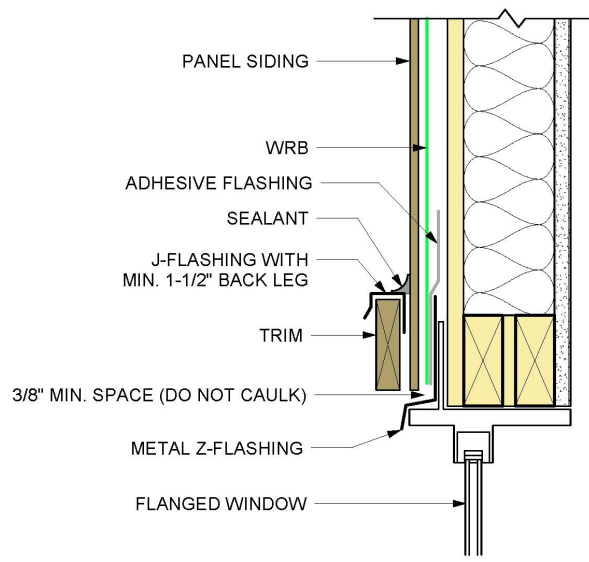
Alternative Horizontal Flashing Option: *(See Figures 1a, 1b, 2a, 2b, 3a and 3b)*

- Cap horizontal trim surface with an inverted “J” shaped flashing
- The top surface width of flashing should be 1/8 inch to 1/4 inch wider than the width of the trim to provide a capillary break
- The top surface of flashing should slope forward to drain, if possible
- Back leg of inverted “J” flashing should be long enough to be captured by trim nailing
- Caulk the horizontal seam between the back edge of the inverted “J” shaped flashing and the siding
- Drip edge or front leg of flashing should provide a drip point to release droplets to the exterior
- Flashing can be metal, vinyl, or any durable material capable of preventing rust, stain and deterioration under normal outdoor environmental conditions for a period of no less than 50 years. For further information or guidance, consult your flashing supplier/manufacturer



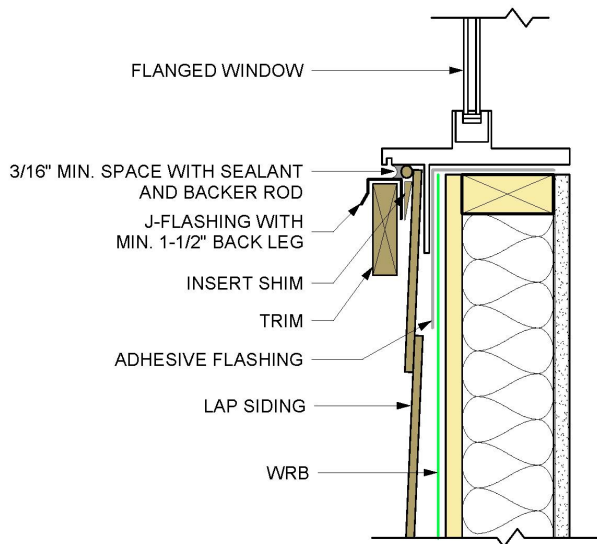
Trim Applied Over Lap Siding

Figure 1a



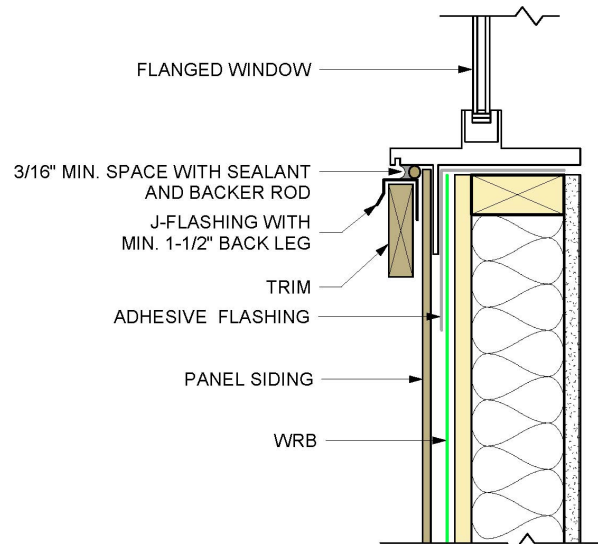
Trim Applied Over Panel Siding

Figure 1b



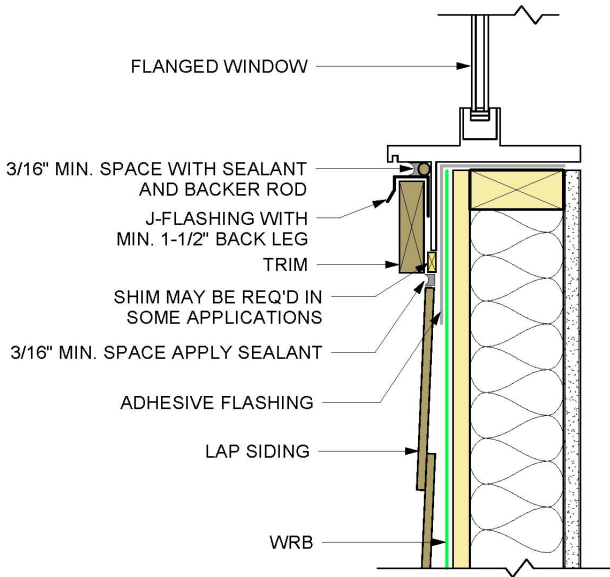
Trim Applied Over Lap Siding

Figure 2a



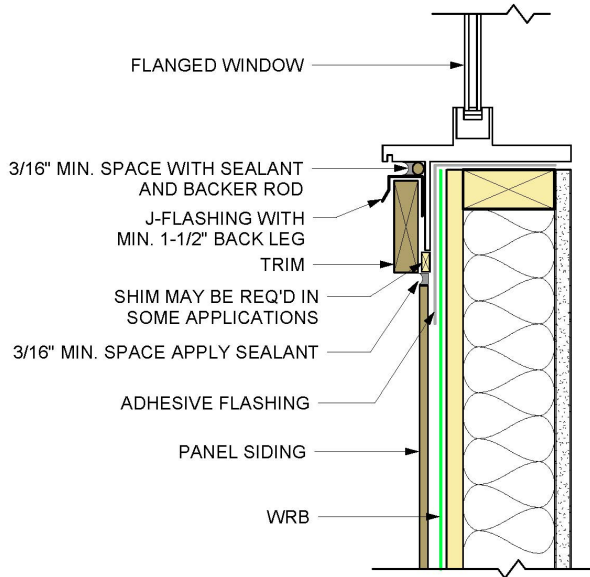
Trim Applied Over Panel Siding

Figure 2b



Lap Siding

Figure 3a



Panel Siding

Figure 3b