

Technical Bulletin 120523 – Common details outside of the LP® WeatherLogic® Air & Water Barrier System

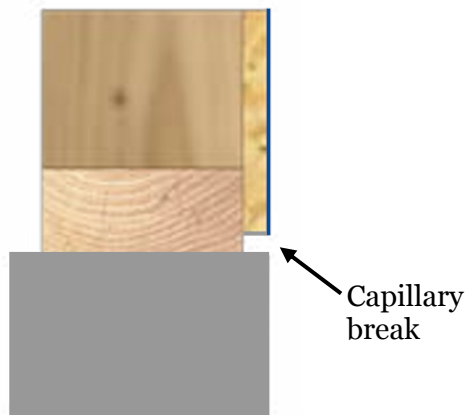
This Technical Bulletin is intended to add definition and clarity to LP WeatherLogic installation details that are required by LP, and common construction details that are acceptable with LP's product but not required by LP.

The LP WeatherLogic Air & Water Barrier system consists of LP WeatherLogic panels with the seams sealed by the LP WeatherLogic Seam & Flashing Sealant and/or the LP WeatherLogic Seam & Flashing Tape. Under the General Information section, LP states that other code-approved materials may be used for fenestration, penetrations, and material transitions.

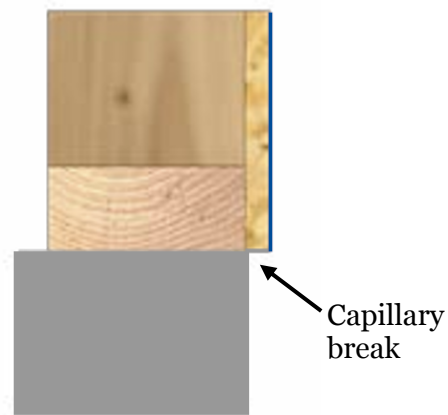
Base of Wall – Capillary Break:

The LP WeatherLogic Air & Water Barrier System requires a capillary break between the masonry foundation and the LP WeatherLogic panel. When LP WeatherLogic panel is installed in plane with the foundation, LP defaults to the APA required 1/2 inch spacing between the panel edge and the foundation. LP does not require the bottom edge of the LP WeatherLogic panel to be covered or wrapped with flashing tape. Other parties or documentation such as local/state codes, project engineers, or approved project specifications may override the 1/2 inch default spacing. LP recommends that the builder, city, installer, inspector, or any other validating party should refer to the approved project specifications as a reference when evaluating the space between the panel and foundation. Here are common constructions details used at the base of the wall, but not required by LP.

Sheathing in plane with foundation wall



Sheathing out of plane with foundation wall



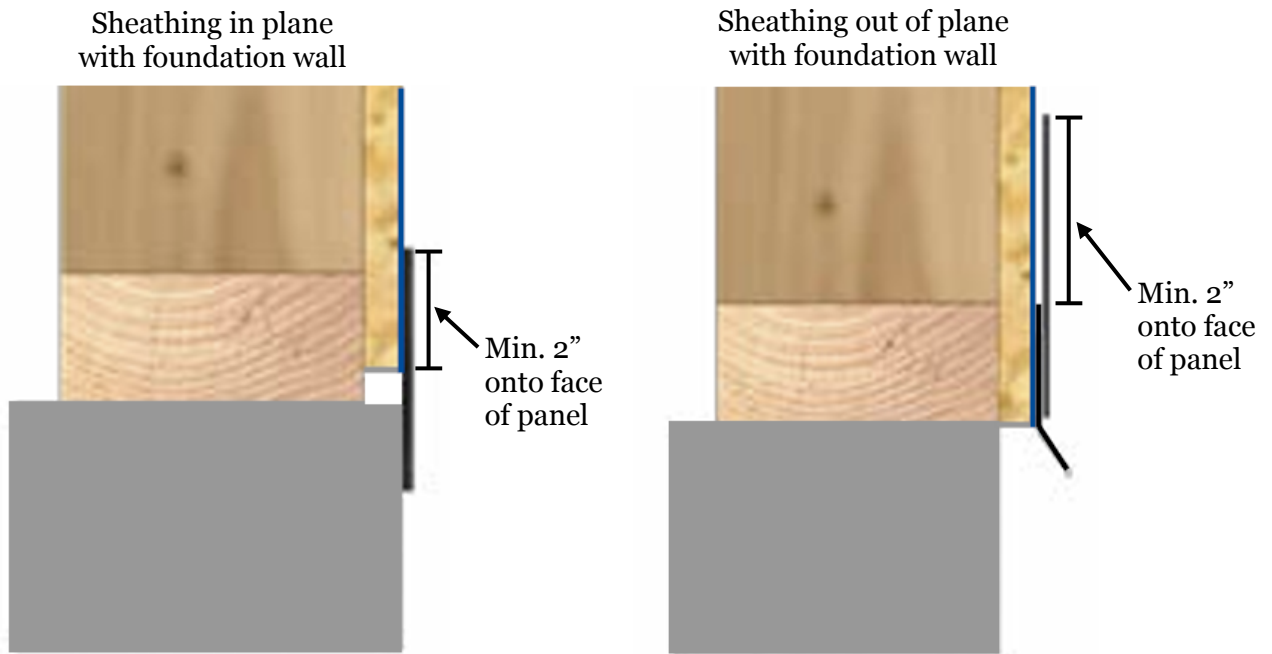
Note: Install a capillary break between the foundation and sill plate as required by code.

Base of Wall – Foundation Transitions:

The LP WeatherLogic Air & Water Barrier System does not require the use of horizontal flashing, drip edge, or flashing tape at the base of the wall. LP does not require the bottom edge of the LP WeatherLogic panel to be covered or wrapped with flashing tape.

Horizontal flashing, drip edge, or flashing tape may be required by other parties such as local/state codes, façade manufacturers, or project engineers.

If LP WeatherLogic Seam & Flashing Tape is applied horizontally at the base of the wall, LP requires the tape to extend at least 2” onto the face of the LP WeatherLogic panel. Here are common constructions details used at the base of the wall, but not required by LP.

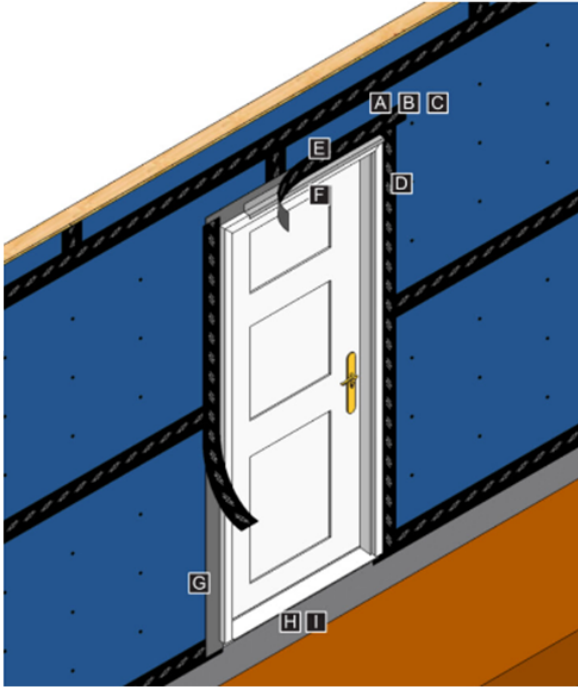


Note: LP WeatherLogic Seam & Flashing Tape must extend at least 2” onto the face of the LP WeatherLogic panel. LP does not require the tape to adhere to the masonry foundation.

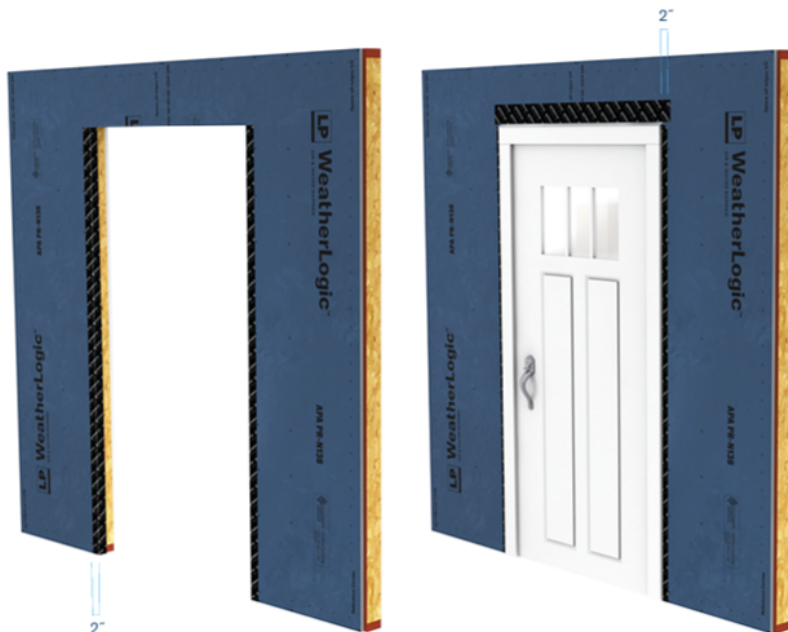
Fenestrations – Door Installation:

Detailing fenestrations falls outside the scope of the LP WeatherLogic Air & Water Barrier system. LP recommends following the fenestration manufacturer's instructions. If LP WeatherLogic Seam & Flashing Tape is applied at fenestrations, LP requires the tape to extend at least 2" onto the face of the LP WeatherLogic panel. Always shingle flashing tape properly.

Here are common constructions details used at fenestrations, but not required by LP.



Door unit has flashing tape applied between brickmold and door jamb to create flashing flanges



Door fenestration has jamb flashing tape applied before door installation