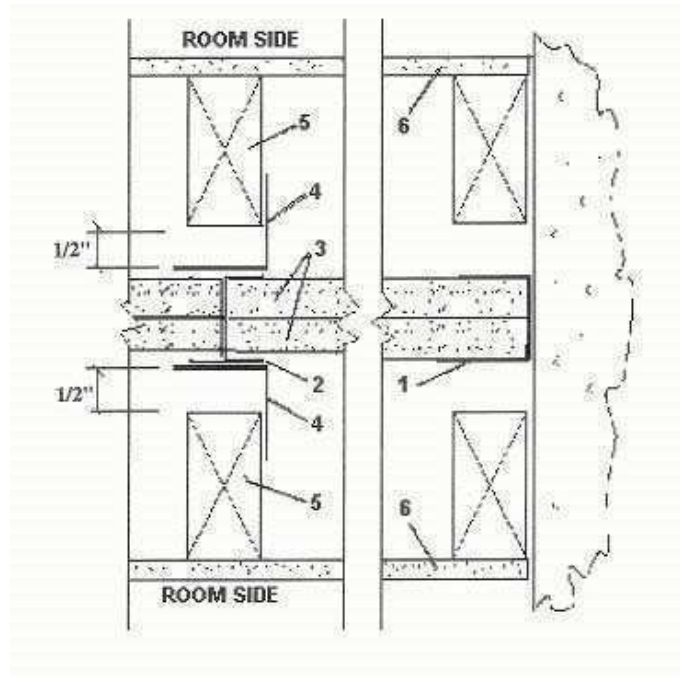




**MARINOWARE INDUSTRIES INC.
400 METUCHEN ROAD
SOUTH PLAINFIELD, NJ 07080**

**DESIGN NO. MW/WA 120-03
ASSEMBLY RATING - 2 HOURS, SYMMETRICAL AREA SEPARATION WALL**



- | | |
|----|--|
| 1. | Floor, Upper, Corner and Intersection Runners*: MarinoWARE 'U' shaped runner, 2-1/8" wide, minimum 25 gauge galvanized steel. Runners attached to floor, ceiling, or structural members with steel fasteners located at 24" oc maximum. |
| 2. | Steel Studs*: MarinoWARE 2" wide, minimum 25 gauge galvanized steel 'H' shaped studs. Studs are cut to length 1/2" less than the wall height and friction fit to gypsum liner boards. |

CORPORATE OFFICE
400 METUCHEN ROAD
SOUTH PLAINFIELD, NJ 07080
TF (800) 627-4661
P (908) 757-9000
F (908) 753-8786
SALES@MARINOWARE.COM

★ **NEW YORK SALES OFFICE** ★
137 BROADWAY (SUITE B)
AMITYVILLE, NY 11701
TF (800) 627-4667
P (631) 691-2200
F (631) 691-1492
FRAMERITE@MARINOWARE.COM

GEORGIA FACILITY
777 GREENBELT PARKWAY
GRIFFIN, GA 30223
TF (800) 504-8199
P (678) 688-1312
F (678) 688-1379
ENGINEERING@MARINOWARE.COM

★ **INDIANA FACILITY** ★
4245 RAILROAD AVENUE
EAST CHICAGO, IN 46312
P (219) 378-7100
F (219) 397-5448
INFO@MARINOWARE.COM



**DESIGN NO. MW/WA 120-03
ASSEMBLY RATING - 2 HOURS, SYMMETRICAL AREA SEPARATION WALL**

3.	Gypsum Liner Boards: 1" thick Listed Type X Gypsum liner boards, supplied in nominal 24" width. Two boards back-to-back are inserted against the web of the track and into the recess of the studs
4.	Aluminium Clips: 2" long x .050" thick aluminium angle attached to wood framing with 1-1/4" Type W drywall screws and to alternate steel stud flanges staggered between exposed sides using framing screws.
5.	Wood Framing: Nominal 2" x 4" wood framing, spaced 24" o.c. maximum and spaced 1/2" from shaft wall surface.
6.	Gypsum Wallboard: 1/2" thick gypsum wallboard applied vertically or horizontally to wood framing, and fastened with 1-1/2" drywall screws 12" o.c. Joints are finished with paper tape and joint compound. Exposed screw heads are finished with joint compound.

CORPORATE OFFICE
400 METUCHEN ROAD
SOUTH PLAINFIELD, NJ 07080
TF (800) 627-4661
P (908) 757-9000
F (908) 753-8786
SALES@MARINOWARE.COM

✦ **NEW YORK SALES OFFICE** ✦
137 BROADWAY (SUITE B)
AMITYVILLE, NY 11701
TF (800) 627-4667
P (631) 691-2200
F (631) 691-1492
FRAMERITE@MARINOWARE.COM

GEORGIA FACILITY
777 GREENBELT PARKWAY
GRIFFIN, GA 30223
TF (800) 504-8199
P (678) 688-1312
F (678) 688-1379
ENGINEERING@MARINOWARE.COM

✦ **INDIANA FACILITY** ✦
4245 RAILROAD AVENUE
EAST CHICAGO, IN 46312
P (219) 378-7100
F (219) 397-5448
INFO@MARINOWARE.COM