



Fire Gasket®

Fire Gasket® is the fastest firestopping solution for head-of-wall joints on the market, installing up to three times faster than traditional sealants and sprays. Fire Gasket® is installed pre-drywall, and is available in three different sizes to provide a range of unencumbered movement — 0.5", 1" and 1.5".



Installation Guide

Before Installation:

Install Fire Gasket® to the wall framing before hanging drywall.

Step 1:

Measure and cut to length.

Step 2:

Remove backing on adhesive foam tape.

Step 3:

Compress the bubble gasket firmly against the adjoining structure. Pressure the product into place while adhering it to the framing.

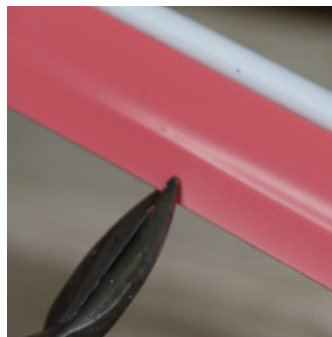
Step 4:

Install drywall directly over Fire Gasket® per the deflection requirement allowed by the required UL joint system reports.

Notes:

- To keep the drywall gap consistent, use an appropriately sized spacer on top of drywall.
- If desired, finish top of drywall with L Bead or Tear Away L Bead.
- Fire Gasket® can optionally be fastened to the framing using appropriate 1/2" screws through the adhesive foam on its lower leg.
- There should be no gaps left in joints between pieces. Additional sealant may be used at butt joint to ensure seamless joints.

Step 1:



Step 2:



Step 3:



Step 4:



Snipped Inside/Outside Corners:

Step 1:

Snip the small return leg at top/back just under the bubble gasket. Do not snip through the bubble gasket.

Step 2:

Snip 1/8" on the bottom of the Fire Gasket®.

Step 3:

Lightly score the intumescent and foam tapes with utility knife to keep it from ripping when bent. Do not cut all the way through the tapes.

Step 4:

Bend Fire Gasket® to meet the inside or outside corner and fasten into place with the foam tape and optionally with 1/2" framing screws through the lower adhesive area of the bead.

Step 1:



Step 2:



Step 3:



Step 4:



Snipped Horizontal to Vertical Joint:

Step 1:

Measure horizontal leg to length and snip off a flat 45° triangular section of the product.

Step 2:

Repeat with the vertical leg, and on install, ensure there are no gaps where the intumescent tape meets.

Step 1:



Step 2:



Mitered Horizontal to Vertical Joint:

Step 1:

Measure top leg to length. Lay product flat on miter saw and make appropriate 45° cut, ensuring product is oriented properly.

Step 2:

Repeat with vertical leg, and on install, ensure there are no gaps where the intumescent tape meets.

Step 1:



Step 2:

