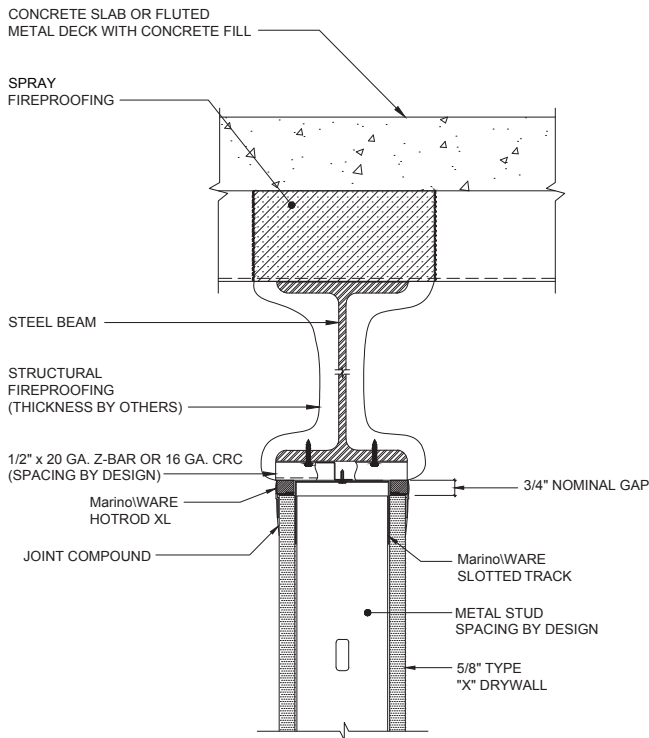
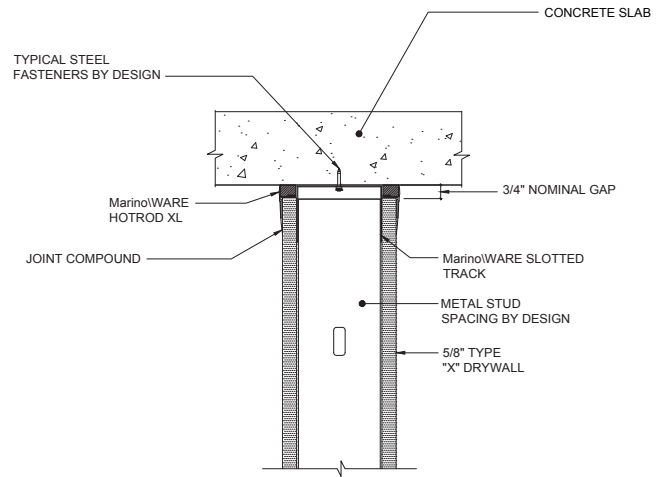


HW-D-0551 1 & 2HR PARALLEL & CENTERED DIRECTLY UNDER BEAM



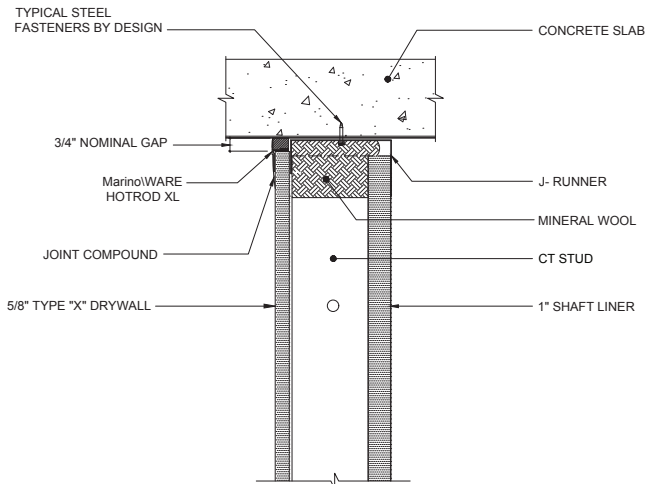
*NOTE: SINGLE LAYER OF 5/8\"/>

HW-D-0624 1 & 2HR STANDARD WALL, CONCRETE SLAB



*NOTE: SINGLE LAYER OF 5/8\"/>

HW-D-0625 1 & 2HR SHAFT WALL, CONCRETE SLAB



*NOTE: SINGLE LAYER OF 5/8\"/>

Always check UL Fire resistance directory for complete design requirements.
 For more information, please contact MarinoWARE® Technical Services at 866.545.1545

This technical information reflects the most current information available and supersedes any and all previous publications effective December 7, 2023 | MW-Joint Firestopping Catalog | ©WARE Industries, Inc. 2023