



BXUV.U428 Fire Resistance Ratings - ANSI/UL 263

[Page Bottom](#)

Design/System/Construction/Assembly Usage Disclaimer

- Authorities Having Jurisdiction should be consulted in all cases as to the particular requirements covering the installation and use of UL Listed or Classified products, equipment, system, devices, and materials.
- Authorities Having Jurisdiction should be consulted before construction.
- Fire resistance assemblies and products are developed by the design submitter and have been investigated by UL for compliance with applicable requirements. The published information cannot always address every construction nuance encountered in the field.
- When field issues arise, it is recommended the first contact for assistance be the technical service staff provided by the product manufacturer noted for the design. Users of fire resistance assemblies are advised to consult the general Guide Information for each product category and each group of assemblies. The Guide Information includes specifics concerning alternate materials and alternate methods of construction.
- Only products which bear UL's Mark are considered as Classified, Listed, or Recognized.

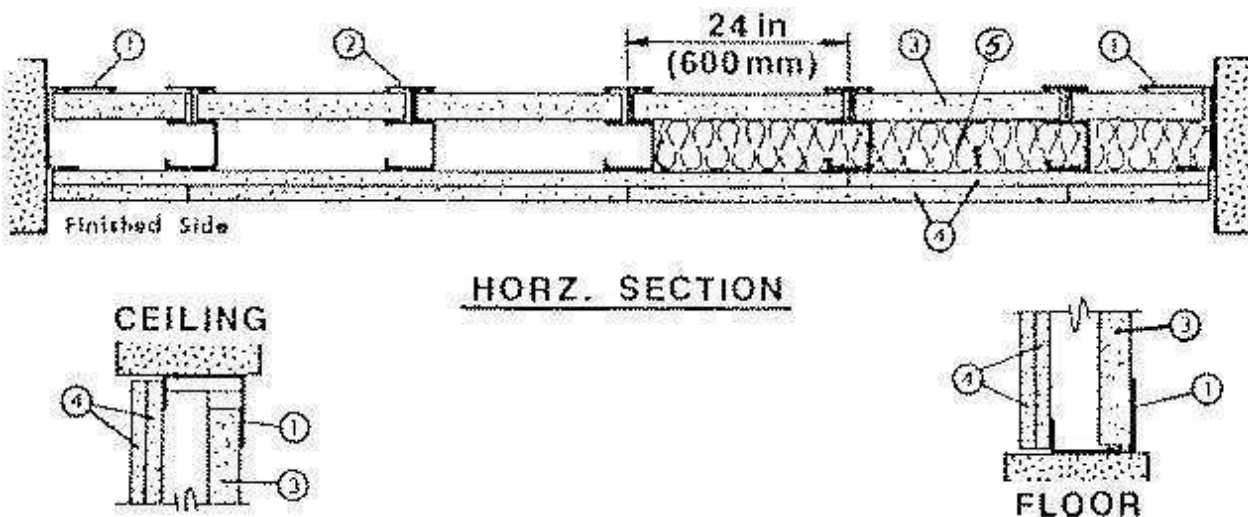
Fire Resistance Ratings - ANSI/UL 263

[See General Information for Fire Resistance Ratings - ANSI/UL 263](#)

Design No. U428

September 02, 2010

Nonbearing Wall Rating — 2 Hr



1. **Floor and Ceiling Runners** — "J" -shaped runners, min. 2-1/2 in. wide with unequal legs of 1 in. and 2-1/4 in., fabricated from 25 MSG galv steel. Runners positioned with short leg toward finished side of wall. Runners attached to structural supports with steel fasteners located not more than 2 in. from ends and not more than 24 in. OC.

2. **Steel Studs** — "C-T" or "C-H" shaped studs 1-5/8 in. wide by min. 2-1/2 in. deep, fabricated from 25 MSG galv steel. Cut to lengths 3/4 in. less than floor to ceiling height and spaced 24 in. or 600 mm OC.

3. **Gypsum Board*** — 1 in. thick gypsum wallboard liner panels, supplied in nom. 24 in. or 600 mm (for metric spacing) widths. Panels cut 1 in. less in length than the floor to ceiling height. Vertical edges of the panels inserted into "T" shaped section of C-T studs or the "H" section of the C-H studs. Free edge of end panels secured to long leg of J runner with tabs in runner or 1-5/8 in. long Type S self-tapping bugle head steel screws spaced not more than 12 in. OC.

AMERICAN GYPSUM CO — Types AG-S

CERTAINTED GYPSUM INC — Types ProRoc Shaftliner, EGRG Shaftliner, GlasRoc Shaftliner.

LAFARGE NORTH AMERICA INC — Type LGFCSL

NATIONAL GYPSUM CO — Types FSW, FSW-B, FSW-7

PABCO BUILDING PRODUCTS L L C, DBA

PABCO GYPSUM — Type PG-10

TEMPLE-INLAND — Type TP-6

4. **Gypsum Board*** — 1/2 or 5/8 in. thick, 4 ft wide, applied in two layers. Base layer attached horizontally to studs and side "J" runners with 1 in. long Type S self-tapping steel screws starting at 2 in. from the floor and ceiling runners and spaced a maximum 24 in. OC along the vertical edges and in the field of the boards.

Face layer installed vertically to studs and side "J" runners and attached with 1-5/8 in. long Type S self-tapping steel screws, starting at 3 in. from the floor and ceiling runners and spaced a maximum 12 in. OC along the vertical edges and in the field of the boards. Face layer joints covered with paper tape and two coats of joint compound. Exposed screw heads covered with two coats of joint compound.

AMERICAN GYPSUM CO — Types AG-C

CERTAINTED GYPSUM INC — ProRoc Type C

CERTAINTED GYPSUM CANADA INC — ProRoc Type C.

GEORGIA-PACIFIC GYPSUM L L C — Type DAPC

LAFARGE NORTH AMERICA INC — Types LGFC-C/A, LGFC6A

NATIONAL GYPSUM CO — Types FSW-C, FSW-G

PABCO BUILDING PRODUCTS L L C, DBA

PABCO GYPSUM — Types PG-C, 5/8 in. Type C.

TEMPLE-INLAND — Type TG-C

4A. **Gypsum Board*** — (As an alternate to Item 4) - Installed vertically only as described in Item 4. 5/8 in. thick, 4 ft. wide, paper surfaced.

NATIONAL GYPSUM CO — SoundBreak XP Type X Gypsum Board

5. **Batts and Blankets*** — (optional) — Mineral wool or glass fiber batts partially or completely filling stud cavity. Any mineral wool or glass fiber batt material bearing the UL Classification Marking as to Fire Resistance.

5A. **Fiber, Sprayed*** — As an alternate to Batts and Blankets (Item 5) — Spray applied cellulose insulation material. The fiber is applied with water to completely fill the enclosed cavity in accordance with the application instructions supplied with the product. Nominal dry density of 3.0 lb/ft³. Alternate application method: The fiber is applied with U.S. Greenfiber LLC Type AD100 hot melt adhesive at a nominal ratio of one part adhesive to 6.6 parts fiber to completely fill the enclosed cavity in accordance with the application instructions supplied with the product. Nominal dry density of 2.5 lb/ft³.

U S GREENFIBER L L C — Cocoon2 Stabilized or Cocoon-FRM (Fire Rated Material)

5B. **Fiber, Sprayed*** — As an alternate to Batts and Blankets (Item 5) and Item 5A - Spray applied cellulose insulation material. The fiber is applied with water to interior surfaces in accordance with the application instructions supplied with the product. Applied to completely fill the enclosed cavity. Minimum dry density of 4.3 pounds per cubic ft.

NU-WOOL CO INC — Cellulose Insulation

5C. **Fiber, Sprayed*** — As an alternate to Batts and Blankets (Item 5) - Spray applied cellulose fiber. The fiber is applied with water to completely fill the enclosed cavity in accordance with the application instructions supplied with the product. The minimum dry density shall be 4.30 lbs/ft³.

INTERNATIONAL CELLULOSE CORP — Celbar-RL

*Bearing the UL Classification Mark

Last Updated on 2010-09-02

[Questions?](#)

[Print this page](#)

[Notice of Disclaimer](#)

[Page Top](#)

Copyright © 2010 Underwriters Laboratories Inc.®

The appearance of a company's name or product in this database does not in itself assure that products so identified have been manufactured under UL's Follow-Up Service. Only those products bearing the UL Mark should be considered to be Listed and covered under UL's Follow-Up Service. Always look for the Mark on the product.

UL permits the reproduction of the material contained in the Online Certification Directory subject to the following conditions: 1. The Guide Information, Designs and/or Listings (files) must be presented in their entirety and in a non-misleading manner, without any manipulation of the data (or drawings). 2. The statement "Reprinted from the Online Certifications Directory with permission from Underwriters Laboratories Inc." must appear adjacent to the extracted material. In addition, the reprinted material must include a copyright notice in the following format: "Copyright © 2010 Underwriters Laboratories Inc.®"

An independent organization working for a safer world with integrity, precision and knowledge.

