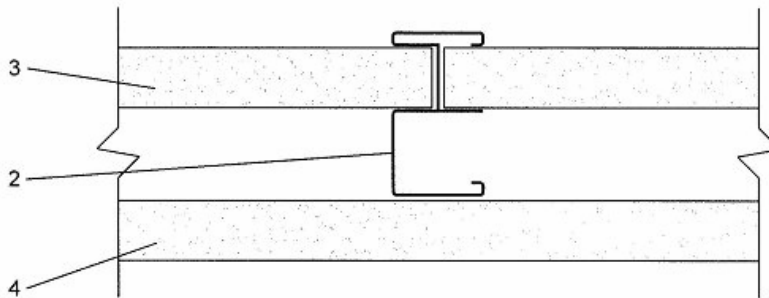




**MARINOWARE INDUSTRIES INC.  
400 METUCHEN ROAD  
SOUTH PLAINFIELD, NJ 07080**

**DESIGN NO. MW/WA 60-01  
ASSEMBLY RATING: 1 HOUR, NON-BERING SHAFTWALL ASSEMBLY  
DESIGN WEIGHT: 6 PSF**



- |    |  |
|----|--|
| 1. | <b>Floor, Ceiling, Corner, and Intersection Runners</b> (Not Shown): Marino Ware 'J' shaped runner with unequal legs, 2-1/2" minimum depth, fabricated from minimum 25 gauge galvanized steel. Long leg of runners is oriented towards shaft. 'J' runners fastened to structural members with steel fasteners at 24" oc maximum. Gypsum board is retained by bending tabs of 'J' runners against board surface.  |
| 2. | <b>Steel Studs:</b> Marino Ware 'C-T' shaped studs, 1-1/2" wide by 2-1/2" minimum depth, fabricated from minimum 25 gauge galvanized steel. Studs are cut to length 1/2" to 3/4" less than the wall height. Friction fit to Shaftliner board edges.  |
| 3. | <b>Gypsum Shaftliner Wallboard:</b> 1" thick Shaftliner Type X, supplied in nominal 24" widths. The panels are inserted against the long leg of the 'J' runners and into the 1" wide slot of the 'C-T' studs.  |
| 4. | <b>Gypsum Wallboard:</b> One layer of 5/8" Type X or 1/2" Type C gypsum wallboard, oriented vertically, with edge joints staggered between layers, fastened to room side of studs using bugle-head Type S drywall screws located 12" oc, except 3" from top and bottom of wall. Screws shall be long enough to penetrate at least 5/8" into studs. Outer layer is finished with paper tape and two layers of joint compound. Screw heads are finished with joint compound. |

**CORPORATE OFFICE**  
400 METUCHEN ROAD  
SOUTH PLAINFIELD, NJ 07080  
**TF** (800) 627-4661  
**P** (908) 757-9000  
**F** (908) 753-8786  
[SALES@MARINOWARE.COM](mailto:SALES@MARINOWARE.COM)

**NEW YORK SALES OFFICE**  
137 BROADWAY (SUITE B)  
AMITYVILLE, NY 11701  
**TF** (800) 627-4667  
**P** (631) 691-2200  
**F** (631) 691-1492  
[FRAMERITE@MARINOWARE.COM](mailto:FRAMERITE@MARINOWARE.COM)

**GEORGIA FACILITY**  
777 GREENBELT PARKWAY  
GRIFFIN, GA 30223  
**TF** (800) 504-8199  
**P** (678) 688-1312  
**F** (678) 688-1379  
[ENGINEERING@MARINOWARE.COM](mailto:ENGINEERING@MARINOWARE.COM)

**INDIANA FACILITY**  
4245 RAILROAD AVENUE  
EAST CHICAGO, IN 46312  
**P** (219) 378-7100  
**F** (219) 397-5448  
[INFO@MARINOWARE.COM](mailto:INFO@MARINOWARE.COM)