

Design/System/Construction/Assembly Usage Disclaimer

- Authorities Having Jurisdiction should be consulted in all cases as to the particular requirements covering the installation and use of UL Certified products, equipment, system, devices, and materials.
- Authorities Having Jurisdiction should be consulted before construction.
- Fire resistance assemblies and products are developed by the design submitter and have been investigated by UL for compliance with applicable requirements. The published information cannot always address every construction nuance encountered in the field.
- When field issues arise, it is recommended the first contact for assistance be the technical service staff provided by the product manufacturer noted for the design. Users of fire resistance assemblies are advised to consult the general Guide Information for each product category and each group of assemblies. The Guide Information includes specifics concerning alternate materials and alternate methods of construction.
- Only products which bear UL's Mark are considered Certified.

BXUV - Fire Resistance Ratings - ANSI/UL 263 Certified for United States

BXUV7 - Fire Resistance Ratings - CAN/ULC-S101 Certified for Canada

See General Information for Fire-resistance Ratings - ANSI/UL 263 Certified for United States Design Criteria and Allowable Variances

See General Information for Fire Resistance Ratings - CAN/ULC-S101 Certified for Canada Design Criteria and Allowable Variances

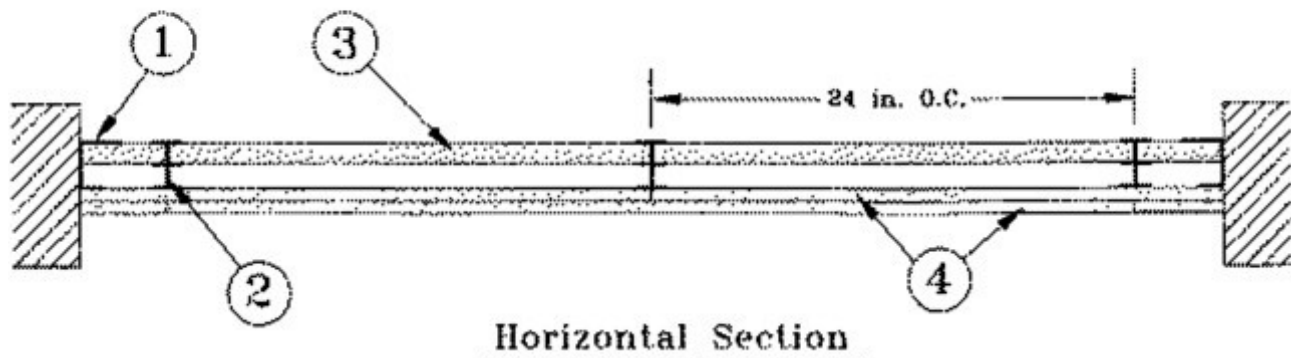
Design No. **V481**

August 4, 2023

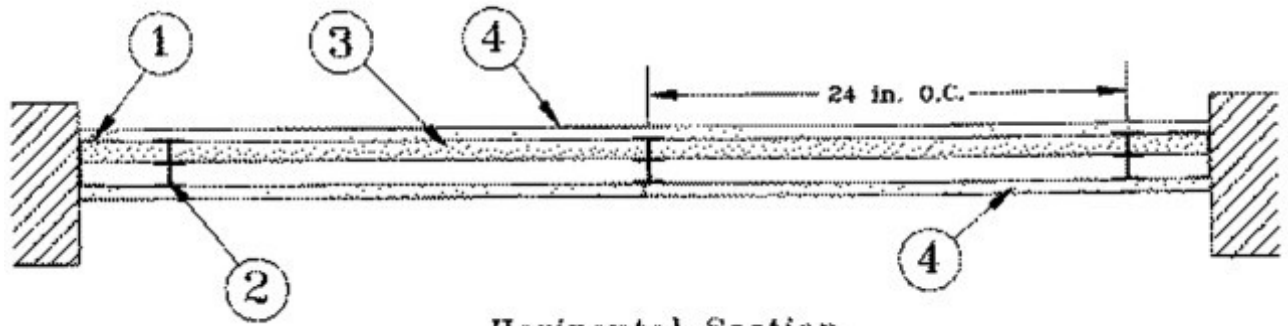
Nonbearing Wall Ratings — 1, 2 and 3 Hr (See Items 3 and 4)

*** Indicates such products shall bear the UL or cUL Certification Mark for jurisdictions employing the UL or cUL Certification (such as Canada), respectively.**

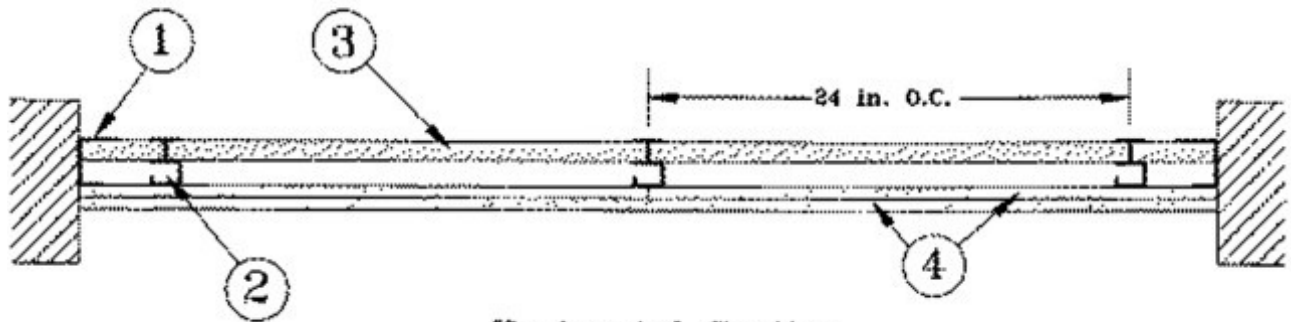
System A - 2 Hr.



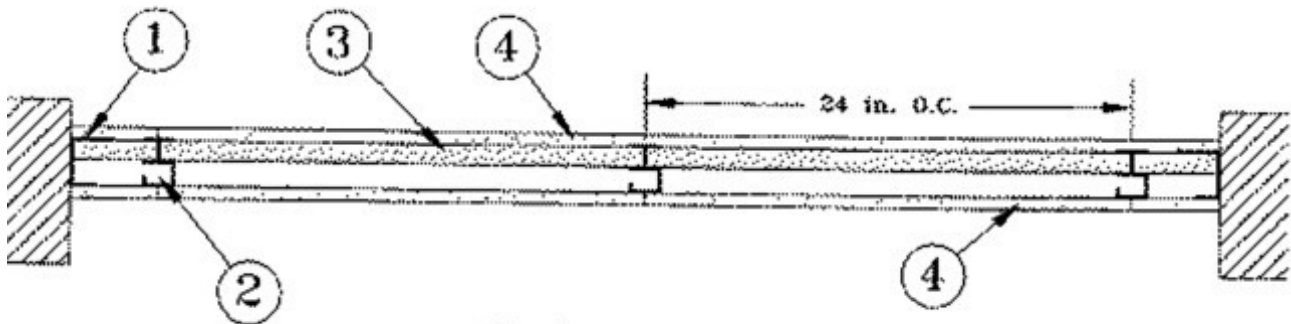
System B - 2 Hr.



Horizontal Section
System C - 2 Hr.

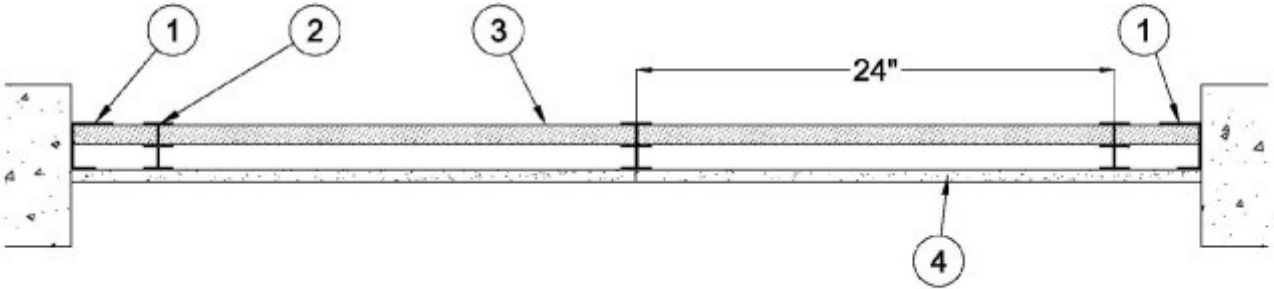


Horizontal Section
System D - 2 Hr.

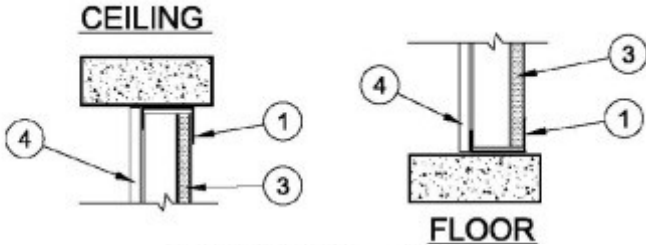


Horizontal Section

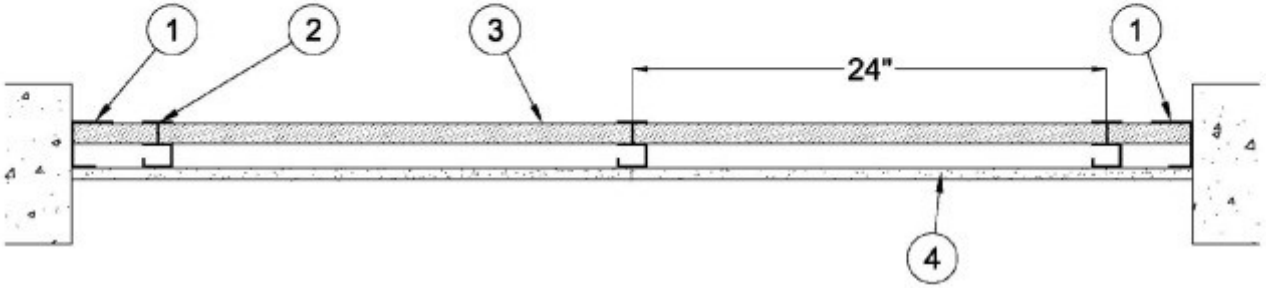
SYSTEM E - 1 HR.



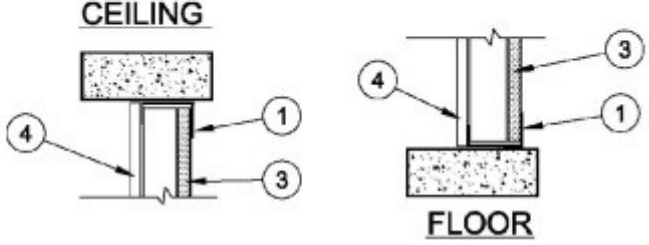
HORIZONTAL SECTION



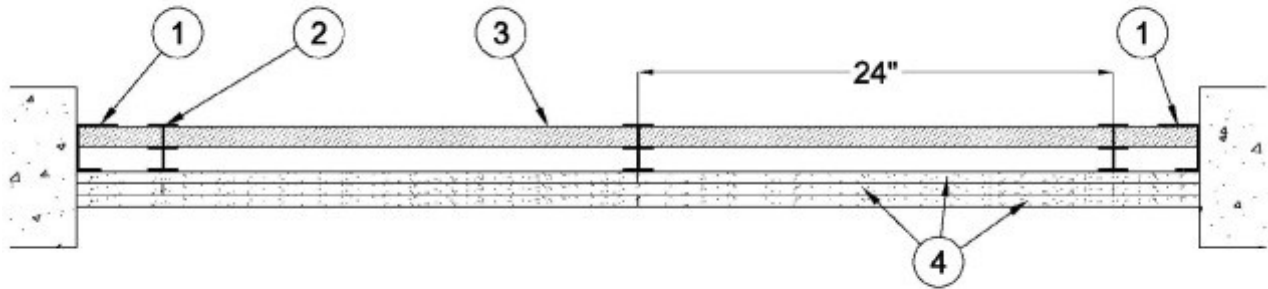
SYSTEM F - 1 HR.



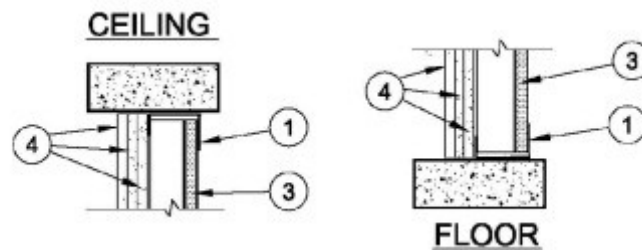
HORIZONTAL SECTION



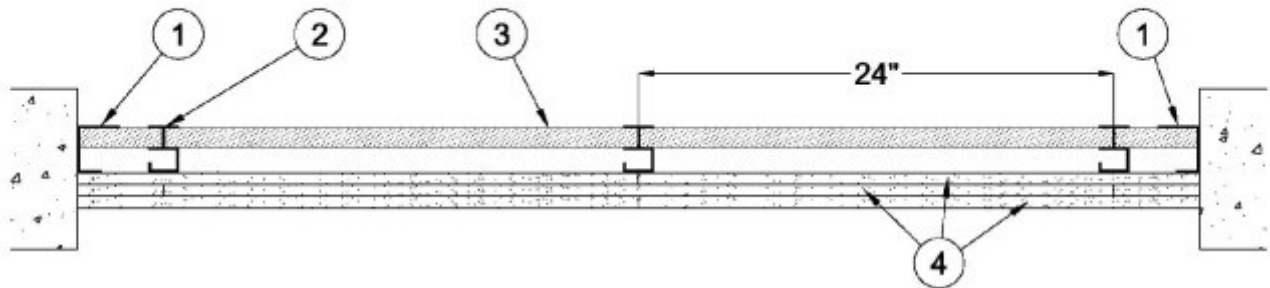
SYSTEM G - 3 HR.



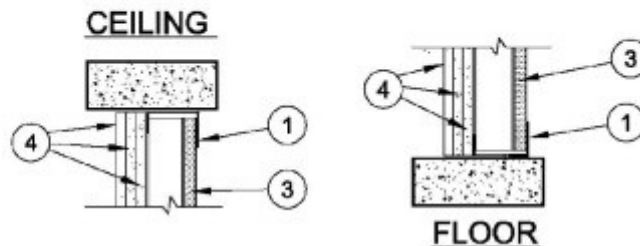
HORIZONTAL SECTION



SYSTEM H - 3 HR.



HORIZONTAL SECTION



1. **Floor, Side and Ceiling Runners** — "J" -shaped runner, min 2-1/2 in. deep, with unequal legs of 1 in. and 2 in., fabricated from min 25 MSG galv steel. Runners positioned with short leg toward finished side of wall. Runners attached to structural supports with steel fasteners located not greater than 2 in. from ends and not greater than 24 in. OC.

2. **Steel Studs** —

Systems A B, E and G

"I" -shaped studs fabricated from min 25 MSG galv steel, min 2-1/2 in. deep, 1-1/2 in. wide. Studs contain 3/4 in. wide by 2-1/4 in. high holding tabs spaced 2-3/4 in. OC. Cut to lengths 3/4 in. less than floor-to-ceiling height and spaced 24 in.

Systems C, D, F, and H

"C-T" or "C-H" -shaped studs, min 2-1/2 in. deep, 1-1/2 in. wide, fabricated from min 25 MSG galv steel. Cut to lengths 3/4 in. less than floor-to-ceiling height and spaced 24 in.

2A. Furring Channels — (Optional, Not Shown) — For use with Systems A and C (double layer systems). Resilient furring channels fabricated from min 25MSG corrosion protected steel, installed horizontally, and spaced vertically a max 24 in. OC. Flange portion of channel attached to each intersecting "I", "C-T", or "C-H" stud on side of stud opposite the 1 in. liner panels with 1/2 in. long Type S or S-12 pan-head steel screws. When furring channels are used, wallboard to be installed vertically only.

2B. Steel Framing Members* — (Optional, Not Shown) — For use with Systems A and C (double layer systems). Furring channels and Steel Framing Members as described below.

a. **Furring Channels** — Formed of No. 25 MSG galv steel. 2-9/16 in. or 2-23/32 in. wide by 7/8 in. deep, spaced max. 24 in. OC perpendicular to studs. Channels secured to studs as described in Item b. Gypsum board (Item 4) installed vertically only and attached to furring channels as described in Item 4.

b. **Steel Framing Members*** — Used to attach furring channels (Item 2Ba) to studs (Item 2). Clips spaced max. 24 in. OC., and secured to studs with No. 8 x 1-1/2 in. minimum self-drilling, S-12 steel screw through the center grommet. Furring channels are friction fitted into clips. RSIC-1 clip for use with 2-9/16 in. wide furring channels. RSIC-1 (2.75) clip for use with 2-23/32 in. wide furring channels.

PAC INTERNATIONAL L L C — Types RSIC-1, RSIC-1 (2.75)

2C. Steel Framing Members* — (Optional, Not Shown) — For use with Systems A and C (double layer systems). Furring channels and Steel Framing Members as described below:

a. **Furring Channels** — Formed of No. 25 MSG galv steel. Spaced 24 in. OC perpendicular to studs. Channels secured to studs as described in Item b. Ends of adjoining channels overlapped 6 in. and tied together with double strand of No. 18 AWG galvanized steel wire. Gypsum board (Item 4) attached to furring channels as described in Item 4

b. **Steel Framing Members*** — Used to attach furring channels (Item 2Ca) to studs. Clips spaced 24 in. OC., and secured to studs with 2 in. coarse drywall screw with 1 in. diam washer through the center hole. Furring channels are friction fitted into clips.

STUDCO BUILDING SYSTEMS — RESILMOUNT Sound Isolation Clips - Type A237R

2D. Steel Framing Members* — (Optional, Not Shown) — For use with Systems A and C (double layer systems). Furring channels and Steel Framing Members as described below.

a. **Furring Channels** — Formed of No. 25 MSG galv steel. 2-3/8 in. wide by 7/8 in. deep, spaced max. 24 in. OC perpendicular to studs. Channels secured to studs as described in Item b. Gypsum board installed vertically only and attached to furring channels as described in Item 4.

b. **Steel Framing Members*** — Used to attach furring channels (Item 2Da) to studs (Item 2). Clips spaced max. 24 in. OC. GENIECLIPS secured to studs with No. 8 x 1-1/2 in. minimum self-drilling, S-12 steel screw through the center grommet. Furring channels are friction fitted into clips.

PLITEQ INC — Type GENIECLIP

2E. Steel Framing Members* — (Optional, Not Shown) — For use with Systems A and C (double layer systems). Furring channels and Steel Framing Members as described below:

a. **Furring Channels** — Formed of No. 25 MSG galv steel, spaced 24 in. OC, and perpendicular to studs. Channels secured to studs as described in Item b. Ends of adjoining channels overlapped 6 in. and secured in place with a double strand of No. 18 AWG twisted steel wire. Gypsum board installed vertically only and attached to furring channels as described in Item 4.

b. **Steel Framing Members*** — Used to attach furring channels (Item 2Ea) to studs. Clips spaced 24 in. OC, and secured to studs with No. 8 x 2-1/2 in. coarse drywall screw through the center hole. Furring channels are friction fitted into clips.

REGUPOL AMERICA — Type SonusClip

2F. Steel Framing Members* — (Optional, Not Shown) — For use with Systems A and C (double layer systems). Resilient channels and Steel Framing Members as described below:

a. **Resilient Channels** — Formed of No. 25 MSG galv steel, spaced 24 in. OC, and perpendicular to studs. Channels secured to studs as described in Item b. Ends of adjoining channels overlapped 6 in. and secured in place with two No. 8 15 x 1/2 in. Phillips Modified Truss screws spaced 2-1/2 in. from the center of the overlap. Gypsum board installed vertically only and attached to resilient channels as described in Item 4.

b. **Steel Framing Members*** — Used to attach resilient channels (Item 2Fa) to studs. Clips spaced 48 in. OC., and secured to studs with No. 8 x 2-1/2 in. coarse drywall screw through the center hole. Resilient channels are secured to clips with one No. 10 x 1/2 in. pan-head self-drilling screw.

KEENE BUILDING PRODUCTS CO INC — Type RC+ Assurance Clip

3. **Gypsum Board*** — Gypsum liner panels, nom 1 in. thick, 24 in. wide. Panels cut max 1 in. less in length than floor to ceiling height. Vertical edges inserted in "T" -shaped section of "C-T" studs or holding tabs of "I" studs. Shaftliner held in place by the tabs of the steel studs, spaced 24 in. OC.

CERTAINTED GYPSUM INC — Type LGFCSL

4. **Gypsum Board*** —

Systems A and C

Gypsum panels, nom 1/2 or 5/8 in. thick, 48 in. wide, applied in one of the following methods. Method 1 — Base layer installed horizontally to steel studs with 1 in. long Type S self-drilling, self-tapping bugle head steel screws spaced 24 in. OC. Face layer installed vertically to steel studs with 1-5/8 in. long Type S self-drilling, self-tapping bugle head steel screws spaced 12 in. OC. Method 2 — Base layer installed vertically to steel studs with 1 in. long Type S self-drilling, self-tapping bugle head steel screws spaced 24 in. OC. Face layer installed horizontally to steel studs with 1-5/8 in. long Type S self-drilling, self-tapping bugle head steel screws spaced 12 in. OC.

CERTAINTED GYPSUM INC — 1/2 in. thick Type LGFC-C/A, 5/8 in. thick Type LGFC6A, LGFC2A, and LGFC-WD

CERTAINTED GYPSUM INC — 1/2 in. Type C, 5/8 in. Type C or Type X-1

Systems B and D

Gypsum panels, nom 1/2 or 5/8 in. thick, 48 in. wide, applied vertically or horizontally to steel studs with 1 in. long Type S self-drilling, self-tapping bugle head steel screws spaced 12 in. OC.

CERTAINTED GYPSUM INC — 1/2 in. thick Type LGFC-C/A, 5/8 in. thick Type LGFC6A, LGFC2A, and LGFC-WD

CERTAINTED GYPSUM INC — 1/2 in. Type C, 5/8 in. Type C or Type X-1

Systems E and F

Gypsum panels, 5/8 in. thick, 48 in. wide, applied in the following method for a 1 Hour Rating — One layer installed vertically to steel studs with 1 in. long Type S self-drilling, self-tapping bugle head steel screws spaced 12 in. OC.

CERTAINTED GYPSUM INC — Types LGFC6A, LGFC-C/A, LGFC2A, and LGFC-WD

CERTAINTED GYPSUM INC — Type C or Type X-1

Systems G and H

Gypsum panels, 5/8 in. thick, 48 in. wide, applied horizontally or vertically for a 3 Hour Rating — Base layer attached to the steel studs with 1 in. long Type S self-drilling, self-tapping bugle head steel screws spaced 24 in. OC.; 2nd layer installed with 1-5/8 in long Type S self-drilling, self-tapping bugle head steel screws spaced 24 in. OC and staggered 12 in. from base layer; Face layer installed to steel studs with 2-1/4 in. long Type S self-drilling, self-tapping bugle head steel screws spaced 24 in. OC in the perimeter and 16 in. OC. in the field and staggered 12 in. from 2nd layer and 24 in. from base layer. Horizontal joints need not be backed by steel framing.

CERTAINTED GYPSUM INC — Type LGFC-C/A

CERTAINTED GYPSUM INC — Type C

5. **Batts and Blankets*** — (Optional) — Mineral wool or glass fiber batts partially or completely filling stud cavity. Any mineral wool or glass fiber batt material bearing the UL Classification Marking as to Fire Resistance.

5A. **Fiber, Sprayed*** — As an alternate to Batts and Blankets (Item 5) — (100% Borate Formulation) — Spray applied cellulose material. The fiber is applied with water to completely fill the enclosed cavity in accordance with the application instructions supplied with the product with a nominal dry density of 2.7 lb/ft³. Alternate Application Method: The fiber is applied without water or adhesive at a nominal dry density of 3.5 lb/ft³, in accordance with the application instructions supplied with the product.

Applegate Greenfiber Acquisition LLC — Insulmax and SANCTUARY for use with wet or dry application.

5B. **Fiber, Sprayed*** — As an alternate to Batts and Blankets (Item 5) and Item 5A — Spray applied cellulose insulation material. The fiber is applied with water to interior surfaces in accordance with the application instructions supplied with the product. Applied to completely fill the enclosed cavity. Minimum dry density of 4.3 pounds per cubic ft.

NU-WOOL CO INC — Cellulose Insulation

6. **Joint Tape and Compound** — (Not Shown) — Joints covered with joint compound and paper or mesh tape. Screw heads covered with joint compound.

*** Indicates such products shall bear the UL or cUL Certification Mark for jurisdictions employing the UL or cUL Certification (such as Canada), respectively.**

Last Updated on 2023-08-04

The appearance of a company's name or product in this database does not in itself assure that products so identified have been manufactured under UL Solutions' Follow - Up Service. Only those products bearing the UL Mark should be considered to be Certified and covered under UL Solutions' Follow - Up Service. Always look for the Mark on the product.

UL Solutions permits the reproduction of the material contained in Product iQ subject to the following conditions: 1. The Guide Information, Assemblies, Constructions, Designs, Systems, and/or Certifications (files) must be presented in their entirety and in a non-misleading manner, without any manipulation of the data (or drawings). 2. The statement "Reprinted from Product iQ with permission from UL Solutions" must appear adjacent to the extracted material. In addition, the reprinted material must include a copyright notice in the following format: "©2024 UL LLC."