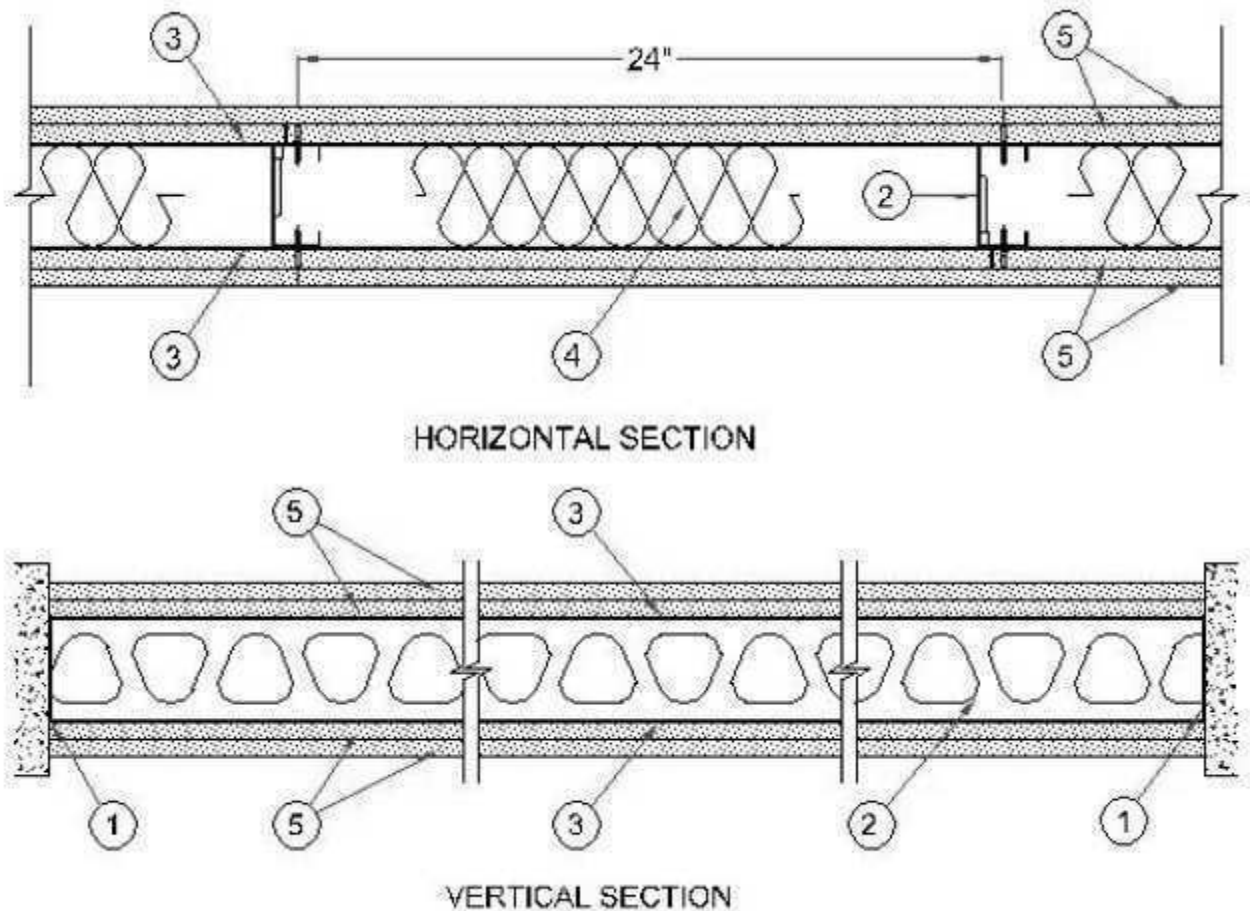


# Fire Resistance Ratings - ANSI/UL 263

[See General Information for Fire Resistance Ratings - ANSI/UL 263](#)

Design No. V457  
November 28, 2006

Assembly Ratings - 1 and 2 Hr (See Item 5)



1. **Floor and Ceiling Track** — Min  $3\frac{5}{8}$  in. wide by  $1\frac{1}{4}$  in. deep channel, min No. 18 MSG galvanized steel, attached to masonry or concrete with fasteners spaced 24 in. OC.

2. **Structural Steel Member\*** — Min  $3\frac{5}{8}$  in. wide,  $1\frac{5}{8}$  in. deep, steel studs made from min 20 MSG galvanized steel. Studs spaced 24 in. OC (maximum) and attached to floor and ceiling track with No. 8 by  $\frac{1}{2}$  in. long low profile screws, one screw per flange, each side.

MARINO\WARE, DIV OF WARE INDUSTRIES INC — Type JR StudRite studs, Type JT Stud Track

3. **Lateral Bracing** —  $1\frac{1}{2}$  in. wide 18 GA thick galvanized steel strapping, spaced 48 in. OC (maximum) attached to each stud through the flange with one No. 8 by  $\frac{1}{2}$  in. long low profile screw.

4. **Batts and Blankets\*** — Placed in stud cavities, nominal thickness  $3\frac{1}{2}$  in., any glass fiber insulation bearing the UL Classification Marking as to Surface Burning Characteristics and/or Fire Resistance, having a min density of 1.0 pcf.

See **Batts and Blankets** (BKNV and/or BZJZ) Categories for names of Classified Companies.

5. **Gypsum Board\*** – 5/8 in. thick, 48 in. wide applied in one or two layers on each side of stud in accordance with the following:

Rating	No. of Layers, Each Side
1 hour	1
2 hour	2

Single layer or inner layer of double layer construction applied vertically and attached to studs and track with 1 in. long Type "S" drywall screws spaced 12 in. OC along board edges and ends and in the field of the board. Joints located over studs and staggered on opposite sides of the assembly. Outer layer of double layer construction applied horizontally or vertically and attached to studs and track with 1 5/8 in. long Type "S" drywall screws spaced 12 in. OC along board edges and ends and in the field of the board. Vertical joints located over studs, vertical and horizontal joints staggered from inner layer joints and on opposite sides of the assembly.

**CANADIAN GYPSUM COMPANY** – Types C, IP-X2, IPC-AR, WRC

**G-P GYPSUM CORP, SUB OF GEORGIA-PACIFIC CORP** – Types 5, Fireguard C, GPFS1

**LAFARGE NORTH AMERICA INC** – Types LGFC-C, LGFC-C/A

**UNITED STATES GYPSUM CO** – Types C, IP-X2, IPC-AR, WRC

**USG MEXICO S A DE C V** – Types C, IP-X2, IPC-AR, WRC

6. **Joint Tape and Compound** – (Not Shown) – Outer layer joints covered with joint compound and paper or mesh tape. Screw heads covered with joint compound.

\*Bearing the UL Classification Mark