

Marino\WARE® Product Submittal Data

PRODUCT NAME: 400VS125-15

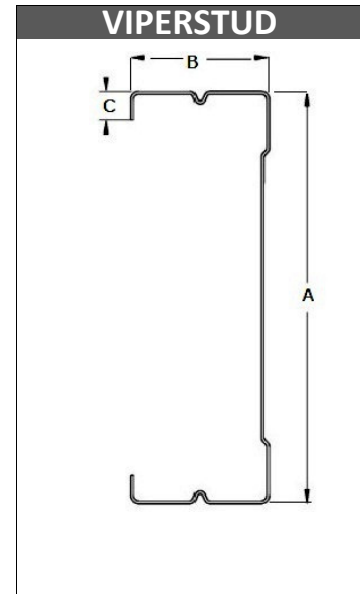
MARINO\WARE PART # 400VS25



PROPERTIES:

A. Web (in)	4	Yield Strength Fy (KSI)	50
B. Flange (in)	1-1/4"	Design Thickness (in)	0.0155
C. Lip (in)	1/4"	Minimum Thickness (in)	0.0147
Mils	15	Gauge EQ	25
Finish	CP60		

09.22.16 Non-Structural Metal Stud



SECTION PROPERTIES

GROSS SECTION PROPERTIES

Weight of Member: (lb/ft)	0.370
Cross Sectional Area: A (in ²)	0.108
Moment of Inertia: Ix (in ⁴)	0.25
Radius of Gyration: Rx (in)	1.52
Gross Moment of Inertia: Iy (in ⁴)	0.02
Gross Radius of Gyration: Ry (in)	0.429

EFFECTIVE SECTION PROPERTIES¹

Moment of Inertia-Deflection: Ix (in ⁴)	0.255
Section Modulus: Sx (in ³)	0.061

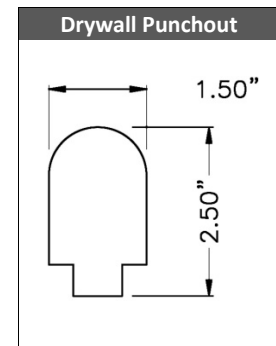
MOMENTS¹

Allowable Bending Moment: Ma (in-k)	1.690
Local Buckling Nominal Moment: Mnl (in-k)	3.990
Distortional Buckling Moment: Mnd (in-k)	3.060

Note 1: Tested values

LIMITING HEIGHTS - COMPOSITE (ft-in)

Spacing (in)	5 psf			7.5 psf			10 psf		
	L/120	L/240	L/360	L/120	L/240	L/360	L/120	L/240	L/360
12	22-1	18-3	16-3	19-3	15-11	14-2	16-8	14-6	12-11
16	20-1	16-7	14-9	16-8	14-6	12-11	14-5	13-2	11-9
24	16-8	14-6	12-11	13-7	12-8	11-3	11-10	11-6	10-1



- Gypsum must be vertically oriented, applied full height to both sides, and fastened to each stud and track flange
- Acceptable wallboards are 5/8" type X from: USG, National, GP, Pabco, American, Continental & CertainTeed.
- No screws are required between stud and track, except as required by ASTM C754.
- See CCRR-0154 for additional information. Review fire related assemblies for any additional requirements

CODES & STANDARDS

- Meets IBC 2015, 2018 & FBC 2020
- ASTM C 645, C 754, E 90, E 119 & AISI S220
- Steel sheet meets ASTM A 1003 or A 653
- Third Party Code Evaluation Report: CCRR-0154
- Multiple Fire Rated Assemblies

GREEN INFO

- LEED v4 credits available
- Contact Technical Services for more information



www.marinoware.com

For more information, please contact Marino\WARE Technical Services at 866-545-1545

This technical information reflects the most current information available and supersedes any and all publications, effective 4/2/22.

©Copyright 2022 by Ware Industries, Inc. All rights reserved