

Marino\WARE® Product Submittal Data

PRODUCT NAME: 400VS125-33

MARINO\WARE PART # 400VS33

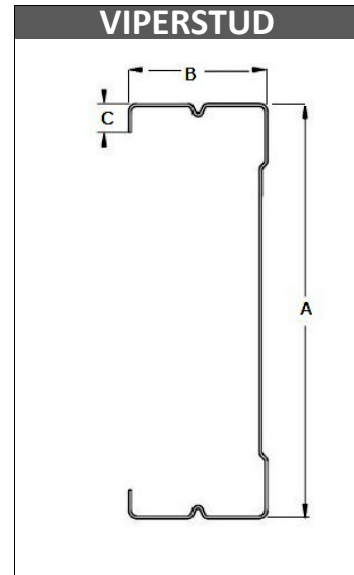


PROPERTIES:

A. Web (in)	4	Yield Strength Fy (KSI)	33
B. Flange (in)	1-1/4	Design Thickness (in)	0.0346
C. Lip (in)	1/4"	Minimum Thickness (in)	0.0329
Mils	33	Gauge	20 STR
Finish*	G40EQ		

*Or other ASTM A1003 Table 1 Coating

09.22.16 Non-Structural Metal Stud



SECTION PROPERTIES

GROSS SECTION PROPERTIES

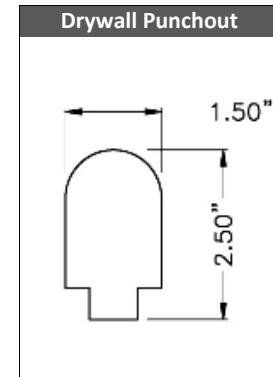
Weight of Member: (lb/ft)	0.780
Cross Sectional Area: A (in ²)	0.230
Moment of Inertia: Ix (in ⁴)	0.544
Radius of Gyration: Rx (in)	1.540
Gross Moment of Inertia: Iy (in ⁴)	0.041
Gross Radius of Gyration: Ry (in)	0.424

EFFECTIVE SECTION PROPERTIES

Moment of Inertia-Deflection: Ix (in ⁴)	0.539
Section Modulus: Sx (in ³)	0.224

MOMENTS

Allowable Bending Moment: Ma (in-k)	4.420
Local Buckling Nominal Moment: Mnl (in-k)	7.380
Distortional Buckling Moment: Mnd (in-k)	7.530



LIMITING HEIGHTS - COMPOSITE (ft-in)

Spacing (in)	5 psf			7.5 psf			10 psf		
	L/120	L/240	L/360	L/120	L/240	L/360	L/120	L/240	L/360
12	25-8	20-4	17-10	22-5	17-10	15-7	20-4	16-2	14-1
16	23-4	18-6	16-2	20-4	16-2	14-1	18-4	14-8	12-10
24	20-4	16-2	14-1	17-3	14-1	12-4	15	12-10	11-2

1. Gypsum must be vertically oriented, applied full height to both sides, and fastened to each stud and track flange
2. Acceptable wallboards are 5/8" type X from: USG, National, GP, Pabco, American, Continental & CertainTeed.
3. No screws are required between stud and track, except as required by ASTM C754.
4. See CCRR-0154 for additional information. Review fire related assemblies for any additional requirements

CODES & STANDARDS

- Meets IBC 2015, 2018 & FBC 2020
- ASTM C 645, C 754, E 90, E 119 & AISI S220
- Steel sheet meets ASTM A 1003 or A 653
- Third Party Code Evaluation Report: CCRR-0154
- Multiple Fire Rated Assemblies

GREEN INFO

- LEED v4 credits available
- Contact Technical Services for more information



For more information, please contact Marino\WARE Technical Services at 866-545-1545

This technical information reflects the most current information available and supersedes any and all publications, effective 4/2/22.

©Copyright 2022 by Ware Industries, Inc. All rights reserved