

EDGE-PRO 80

SEMI-RIGID POLYUREA JOINT FILLER

600 ML (300x300) Dual-Cartridge Kit

IMPORTANT INSTRUCTIONS PLEASE READ BEFORE USE

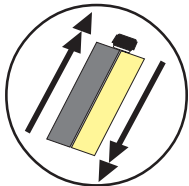
CARTRIDGE SHOULD BE STORED AT OR CONDITIONED TO 65°F - 75°F PRIOR TO USE FOR BEST RESULTS

For most consistent mix, dispense with *Albion B26 T600* or similar 26:1 thrust ratio dispensing gun. Lower thrust ratios can lead to less consistent results.

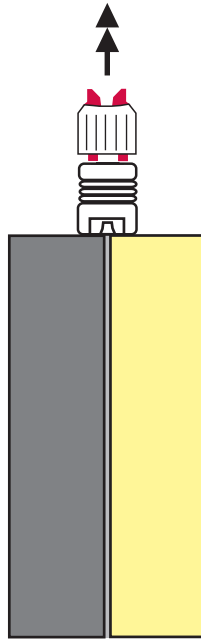
INSTRUCTIONS FOR USING CARTRIDGE UNIT

1

SHAKE WELL
BEFORE USE
(45 seconds+)



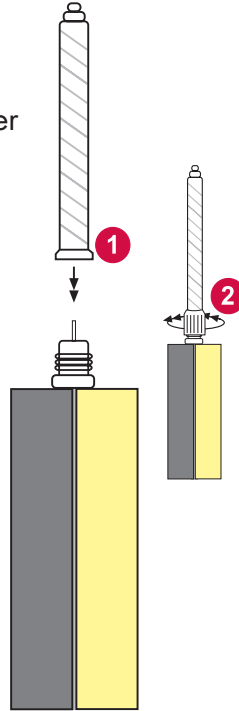
Unscrew lock nut and pull plug out



2

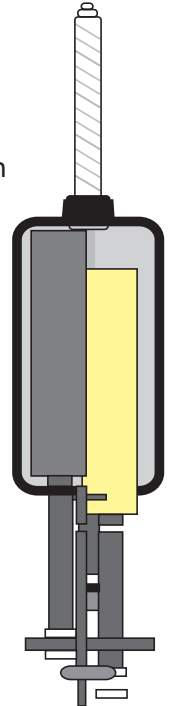
Place static mixer
onto neck of
cartridge.

Screw lock nut
over mixer and
secure tightly



3

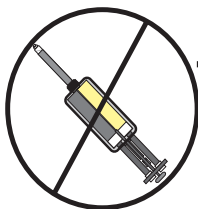
Pull back
pistons in gun
and securely
load
cartridge
in cradle



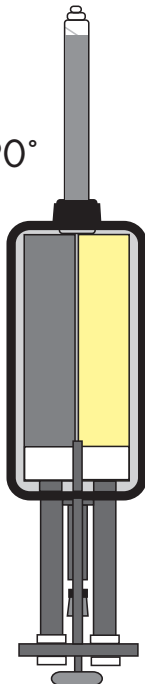
4

IMPORTANT!

Hold Gun
straight up at
a 90° angle
and slowly
pull trigger to
purge air from
unit. Drive
material to
top of mixer.



90°

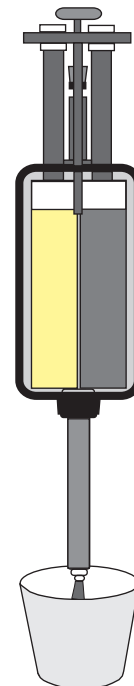


5

Tilt gun down and squeeze
first 3-4 shots of material
into a disposable cup, etc.
until color appears to be
consistent.

IMPORTANT!

Gun should remain tilted
down whenever dispensing
or when cartridge is being
used - do not tilt gun up
during use as partially
mixed material may run
back into cartridge!



UPDATED 04/20