

MOD BIT

ROOFING SYSTEMS



"The name trusted in roofing since 1906"



SYSTEM BENEFITS

FAST INSTALLATION

Mule-Hide Modified Bitumen roofing systems install quick and clean to a wide range of substrates. Choose the system to achieve the greatest performance with the least disturbance to your customer.

VERSATILE CAP SHEETS

APP Torch Cap Sheet is available in both granulated or smooth along with Self-Adhering Cap Sheet options (APP or SBS). Ideal for new construction and retrofit installations.

ATTRACTIVE ROOFS

Granule surface cap sheets are available in 10 popular colors. Light-colored surfaces have been shown to reflect the sun's rays reducing energy costs.

REPAIRABLE

High-quality compounds used in the manufacturing process allow for easy cutout and tie-in repairs.

WARRANTY PROGRAM

Mule-Hide offers an extensive warranty program with several options for commercial projects, including Membrane Warranties and System Warranties.

Complete warranty information can be found at mulehide.com under the Warranty Information tab.

A Mule-Hide representative inspects all commercial projects for which a System Warranty is requested prior to the issuance of the warranty. To be eligible for a System Warranty, the installing contractor must be a Mule-Hide Warranty Eligible Contractor. Warranty Eligible Contractor information can be found at mulehide.com under the Warranty Information tab.

Mule-Hide also offers a selection of Membrane Warranties that are available for residential (single-family dwelling) projects.



APP TORCH (*Granulated or Smooth*)

The classic choice for outstanding long-term performance and durability. Thicker membrane boasts superior weatherability and puncture resistance.



SELF-ADHERING MOD BIT (*SBS OR APP*)

"Dual compound" reinforced membranes with proprietary adhesive formulation on the bottom surface. Patented *SEALLap*® & *FASTLap*® engineering provides stronger, more reliable seams and end laps.



CAP SHEET COLOR SELECTION



White



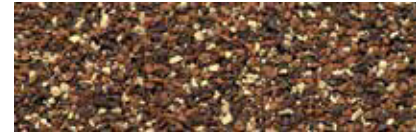
Black



Weatherwood



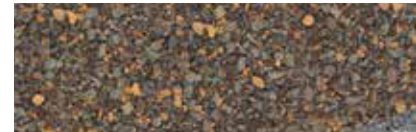
Buff



Chestnut



Oak



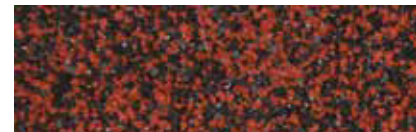
Heather Blend



Grey Slate



Pine Green



Red Blend

PRODUCT NAME	DESCRIPTION	COVERAGE PER ROLL	ROLLS PER PALLET	WEIGHT PER ROLL
BASE SHEETS				
SA Base Sheet	Self-Adhesive SBS Base Sheet Inter-Ply with Polyolefin Film Surface Glass Fiber Mat <i>ASTM D6163 Type I, Grade S / ASTM D1970</i>	200 FT ²	20	98
SA Base Sheet (FR)	Self-Adhesive SBS Fire-Retardant Base Sheet Inter-Ply with Polyolefin Film Surface Glass Fiber Mat <i>ASTM D6163 Type I, Grade S / ASTM D1970</i>	200 FT ²	20	98
Nail Base	SBS Base Sheet Polyfilm Top Sand Bottom Glass Fiber Mat <i>ASTM D6163 Type I</i>	200 FT ²	20	100
G2 Base	Fiberglass Mat Coated with Oxidized Asphalt <i>ASTM D4601 Type II</i>	300 FT ²	20	82
APP Torch Base	Fiberglass Mat Saturated and Coated with a Polymerized Asphalt Compound <i>ASTM D6509 Type I</i>	200 FT ²	20	95
TORCH CAP SHEETS				
APP Torch G	APP Granular Surface Non-woven Polyester Mat <i>ASTM D6222 Type I</i>	100 FT ²	20	110
APP Torch G FR	APP Fire-Retardant Granular Surface Non-woven Polyester Mat <i>ASTM D6222 Type I</i>	100 FT ²	20	110
APP Torch S	APP Non-Granular (Smooth) Surface <i>ASTM D6222 Type I</i>	100 FT ²	23	110
SELF-ADHERING CAP SHEETS				
SA-SBS Cap Sheet	SBS Granular Surface Non-woven Fiberglass Mat <i>ASTM D6164 Type I / ASTM D1970</i>	100 FT ²	20	95
SA-SBS Cap Sheet (FR)	SBS Fire-Retardant Granular Surface Non-woven Fiberglass Mat <i>ASTM D6164 Type I / ASTM D1970</i>	100 FT ²	20	95
SA-APP Cap Sheet	APP Granular Surface Non-woven Polyester Mat <i>ASTM D6222 Type I / ASTM D1970</i>	100 FT ²	20	95
SA-APP Cap Sheet (FR)	APP Fire-Retardant Granular Surface Non-woven Polyester Mat <i>ASTM D6222 Type I / ASTM D1970</i>	100 FT ²	20	95

WHY MULE-HIDE

GROW YOUR BUSINESS

When you choose Mule-Hide roofing materials for a project, you get more than just the best products from a company that's been helping contractors for over a century. You'll receive individualized service to help you get the job done right the first time – so you can get on to the next job, and get that one done right, as well. Mule-Hide products are available exclusively through roofing distributors.



MOD BIT ACCESSORIES



- #421 Mod Bit Flashing Adhesive - Trowel Grade, 3-gal. or 5-gal. pail
- #271 Mod Bit Sealant - 10.5-oz. tube
- #121 Asphalt Primer - 14-oz. spray can or 5-gal. pail
- #251 Premium Wet/Dry Elastomeric Flashing Cement - 10.5-oz. tube, 3-gal. or 5-gal. pail
- #401 Premium Fibrated Aluminum Roof Coating - 5-gal. pail or 55-gal. drum



Contact Mule-Hide Products for specific product approvals and ratings. Featured industry association/organization logos are U.S. registered trademarks. Mule-Hide is an AIA registered CES provider. Energy Star is only valid in the United States for Roofing Products.

“The name trusted in roofing since 1906”

Customer Line: 800-786-1492 • www.mulehide.com

Check our website monthly for the latest updates & technical bulletins.

National Support Center • 1195 Prince Hall Drive • Beloit, WI 53511 • tel. 608.365.3111 • fax. 608.365.7852



The information herein should not be considered all-inclusive and should always be accompanied by a review of the Mule-Hide specifications and guidelines and good application practices.

This information herein is based upon data and knowledge considered to be true and accurate at the time of printing and is provided for the reader's consideration, investigation and verification. No statement made by anyone may supersede this information, except when done in writing by Mule-Hide Products Co., Inc. Mule-Hide Products Co., Inc. does not warrant any results to be obtained. Statements concerning possible use of Mule-Hide products are made without knowledge of your particular roof and such an application may not be fit for your particular purpose. MULE-HIDE DISCLAIMS ALL WARRANTIES, INCLUDING THE IMPLIED WARRANTY OF MERCHANTABILITY AND FITNESS FOR A PARTICULAR PURPOSE, except written warranties attached to Mule-Hide products and written warranties signed by an officer of Mule-Hide.

Visit the Mule-Hide website at www.mulehide.com prior to any installation for updated technical specifications and details. Mule-Hide, FastLap and SealLap are U.S. registered trademark. All rights reserved.