



Gold Bond® Ceiling Board

Excellent Sag Resistance

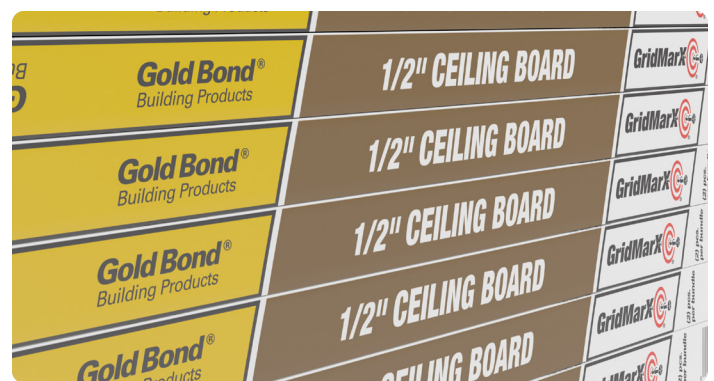
Gold Bond® Ceiling Board is a specialty gypsum board with increased uniformity and integrity of its gypsum core, making its sag resistance equivalent to 5/8" Type X gypsum board. Gold Bond Ceiling Board is specifically designed for ceilings where framing members are spaced up to 24" o.c. and a water-based texture will be used.

ADVANTAGES

- Excellent working characteristics and improved score and snap properties reduce the need for rasping.
- Sag resistant. Test results show overall sag resistance to be equivalent to 5/8" (15.9 mm) Type X gypsum board.
- Eliminates the need for 2 gypsum board sizes on the job. Scrap from ceiling is reduced since this material also can be used on the walls.
- Costs less than 5/8" gypsum board.
- Weighs significantly less than 5/8" gypsum board.
- Achieves UL GREENGUARD Gold Certification for low chemical emissions.

LIMITATIONS

- Not recommended for high moisture areas such as saunas, steam rooms or gang showers.
- Prime with sealing latex primer and allow to dry thoroughly before decoration.
- Apply insulation and polyethylene vapor barrier (if used) before installing ceiling board.
- Insulation not to exceed 2.2 lbs./sq. ft. (10.7 kg/m²).
- Adequate ventilation required.



TECHNICAL DATA

Physical Specifications

Meets ASTM C1396
Meets Federal Specification SS-L-30D Type III, Grade R, Class 1.
Code Compliance reports:
ICC ES ESR-1366

Thickness: 1/2" (12.7 mm)

Width: 4' (1,219 mm)

Length: 12' (3,658 mm)

Edge: Square or Tapered

Surface Burning Characteristics - ASTM E84

Flame Spread Index: 15

Smoke Developed: 0



National Gypsum Company is the exclusive service provider for products manufactured by Gold Bond Building Products, LLC.

Gold Bond® Ceiling Board is manufactured by Gold Bond Building Products, LLC.



goldbondbuilding.com