



Durasan[®] Prefinished Gypsum Board

National 
Gypsum[®]

Exclusive service provider of
Gold Bond Building Products, LLC

Quick, Easy Installation for Your Walls

Save time and labor costs using prefinished Durasan

Gold Bond® Durasan® Prefinished Gypsum Board offers the benefits of gypsum board with the colors, textures and durability of a vinyl wall covering. Durasan eliminates the need for joint treatment or paint, resulting in time and labor savings.

Durasan can be used in all interior applications including office, retail, and institutional applications such as hospital, libraries, government buildings, and schools.

ADVANTAGES

- Installs quickly and at a lower price than traditional gypsum board.
- Scores and snaps easily to exact size without sawing.
- Abrasion resistant and easy to clean and maintain.
- Wide variety of patterns and colors.
- Fade resistant.



Santa Fe Adobe



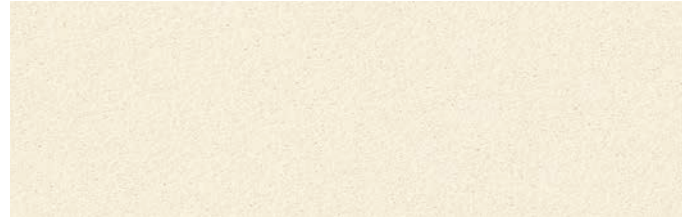
Santa Fe Porcelain

Pattern and Color Selection

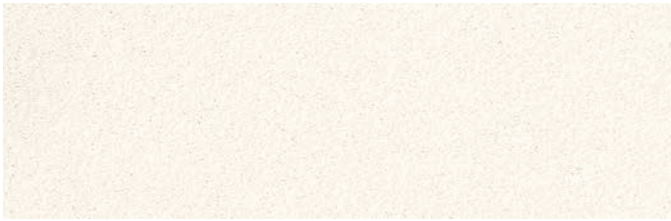
Group 1 - Stipple



Champagne



Chiffon

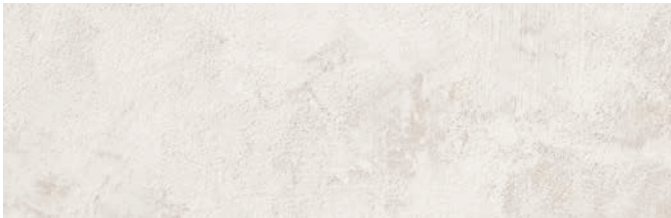


Off White



Cloud

Group 2 - Santa Fe



Porcelain

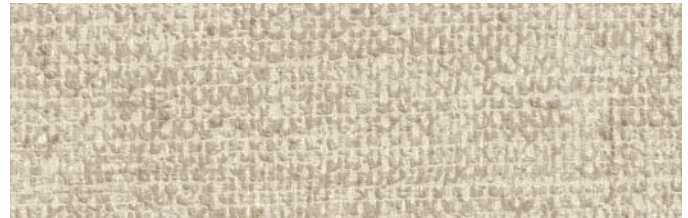


Adobe

Group 3 - Harvest



Cotton



Oyster White



Rice

Color accuracy of Durasan panel patterns is limited in printing. Contact your sales representative for samples.

Durasan® Prefinished Gypsum Board

Eliminates the Need for Finishing and Painting



1. Vinyl Covering
2. 100% Recycled Paper
3. Fire-Resistant Gypsum Core

Durasan® Prefinished Gypsum Board consists of a fire-resistant gypsum core in a heavy, natural finish with 100% recycled paper on the face and back sides and a decorative vinyl covering over the face paper. The long edges are beveled and wrapped with decorative vinyl.

Apply Durasan directly to metal or wood studs or as a finish layer over gypsum board. It is ideal for most demountable partition systems. Durasan eliminates the need for joint treatment and paint, resulting in time and labor savings.

TECHNICAL DATA

PHYSICAL PROPERTIES

Thickness: Available 1/2" thick as a standard product. Available in a 5/8" Type X as special order.

Width: 4'

Lengths: 8', 9' and 10'. Special lengths may be available. Consult your local sales representative for more information.

Edges: The long edges are wrapped with a vinyl film covering. Panel edges are beveled. Vinyl covered Durasan panels comply with ASTM Specification C1396.

FIRE RATED CONSTRUCTION

Durasan Prefinished Gypsum Board panels are approved for use in noncombustible construction. Assemblies employing Durasan panels used as a wall surfacing material have been accorded fire resistance ratings by Factory Mutual Research Corp. and Underwriters Laboratories.

SURFACE BURNING CHARACTERISTICS

Product	Flame Spread	Smoke Developed
Durasan Vinyl	25 or less	50 or less

DURASAN VAPOR PERMEANCE VALUES

Patterns	Perms	mil	(mm)
Stipple	0.49	6	0.15
Santa Fe	0.25	6	0.15
Harvest	0.28	6	0.15

Above vapor permeance values determined using the Dry Cup (Desiccant) Method at typical conditions of 70°F (21.1 °C) and 50% Relative Humidity in accordance with ASTM E96.

DURASAN AVERAGE LIGHT REFLECTANCE VALUES*

Group	Pattern	Color	Reflectance Value
Group 1	Stipple	Champagne	69
		Chiffon	77
		Cloud	69
		Off White	85
Group 3	Santa Fe	Porcelain	69
		Adobe	55
	Harvest	Cotton	65
		Oyster White	52
		Rice	68

*X-RITE 968 Reflection Spectrophotometer used in accordance with ASTM Test Method E97.

CLEANING

To remove most common dirt and marks, rub lightly with a moistened cloth, sponge or soft hair bristle brush, using a mild soap, detergent or nonabrasive cleanser. Rinse with water and wipe dry. Safely remove more stubborn stains by wiping away excess material, scrubbing the stained area with a stiff bristle brush wetted with an appropriate solvent, and quickly wiping dry with a clean cloth.

Caution: The use of strong organic solvents (such as ketones), harsh abrasive cleaners or steel wool are not recommended. These materials may cause dulling, discoloration, softening and other permanent damage to the vinyl surface.

Some proprietary solvent cleaners used for fabric spot stain removal may remove the vinyl surface overprint pattern.

If the suitability of any cleaning agent is unknown, check its effect on the Durasan surface in a hidden area or on a scrap piece before attempting to remove a field stain.

ABRASION RESISTANCE

Tested in accordance with ASTM D1044, Durasan withstands over 10,000 revolutions without breaking through the vinyl film.

PAINTING

Durasan is a factory-finish decorative product which does not require painting.

However, if desired, Durasan can be satisfactorily painted with the following products:

1. Two coats of an alkyd or latex semigloss enamel.
2. Oil primer with finish coat of oil paint or flat latex.
3. Two coats of flat oil paint.

WALLCOVERING

Matching Durasan in 30 Lineal Yard Rolls

Fabric-backed vinyl film is available in most Durasan patterns, colors and textures for field application to provide a close, commercial color match for use on columns, curved surfaces or where extensive cutouts would make Durasan panels difficult to use. Because field applied vinyl is fabric-backed, the Durasan panels and the complementary vinyl roll goods may vary slightly in color and texture.

LIMITATIONS

Vapor Permeance

Durasan vinyls are vapor retarders, and a second vapor retarder should not be placed behind these products, i.e. kraft face insulation. For this reason, foil-backed Durasan is not available.

High Heat

Durasan panels have the same limitations regarding heat as regular gypsum board and should not be used in areas where surface temperatures will exceed 125°F.

Durasan panels are not suitable for use behind stoves where direct heat or steam could affect the panel covering.

Moisture Conditions

Durasan panels should not be used around bath tubs, in shower enclosures or in areas where panels will be subject to free moisture. When Durasan panels abut concrete floors and/or ceilings, cut the panel to allow a minimum of 1/8" clearance between panels and floors and/or ceilings to prevent potential wicking.

Treated Lumber

If Durasan panels will be applied over treated lumber, tests should be conducted prior to application to be sure the chemical treatment of the wood does not affect the bond or color of the panel covering.

Masonry Walls

Do not apply Durasan panels over wet or damp masonry walls. Mildew or staining problems could result if the walls are not dry or will not remain dry. Applying Durasan to exterior walls requires the use of furring strips.

Trim Application

Plastic, wood or metal trim must be applied at both floor and ceiling. Trim should be applied carefully to Durasan panels to avoid creating excessive pressures which might later cause delamination of the vinyl covering.

Color Variation

Since manufacturers of the laminate used on Durasan panels finish to a commercial color match, minor color variations are possible. Therefore, care should be taken during application to ensure that panels applied on single walls or visual areas are color matched to minimize any such variations in the laminate.

General Installation

INSTALLING DURASAN PANELS

There are several methods for installing Durasan products in order to meet specific job requirements. As in regular gypsum board construction, install ceilings first, before erecting Durasan boards. Attach boards vertically. Do not apply Durasan to ceilings.

APPLICATION OF DURASAN

Apply the 1/2" or 5/8" Durasan vertically. Start at the end of a wall or partition intersection and cut the first panel if necessary so that its leading, uncut edge (the direction in which work will progress) falls at the center of stud framing.

CUTTING DURASAN PANELS

Scoring and snapping is the easiest and fastest way to make straight cuts. To do this, merely score the pre-decorated surface with a sharp knife guided by a thin board with a straight edge. Then position the scored panel so the piece to be removed is overhanging a straight edge parallel to the scored mark. Press this free end until the gypsum core snaps. Cut the back paper to remove excess piece.

Sawing Durasan panels is easier than cutting lumber. For best results, keep the prefinished surface up and use a sharp, fine-tooth saw or appropriate router bit.

Note: Cut Durasan panels to length, 1/4" shorter than ceiling height so panels are not forced into place.

PANEL LAYOUT

Before application, proper arrangement of panels should be studied. For a most pleasing result, all joints of panels should be centered on architectural features of the wall, such as fireplaces, windows, doors, etc. If the wall contains no such openings, arrange for the two end panels to be of equal width. Narrow strips are difficult to install and should be avoided. Any special use of decorative trims and moulding should be considered at this time.

CORNER TREATMENT

Inside Corners: Where two walls intersect to form an inside corner, the last panel installed at this intersection should have two finished edges to create a professionally installed look. See photographs, "Forming A Narrow Plank With Two Finished Edges," for directions on finishing an edge on the job. This treatment can be eliminated by using Durasan Snap-On Interior Trim.

Outside Corners: Wood, plastic or metal corner mouldings, nailed or glued to wood or steel framing, are recommended for edge protection where panels meet to form outside corners. These mouldings can be stained or painted either in matching or contrasting colors, or use matching Durasan Snap-On Cornerbead.



Curved Cuts can be made easily with a keyhole saw. If an area must be cut from the center of the board, it is recommended that a hole be bored that will take the point of the saw.



Where Two Cuts Join, one cut must be made with a saw, the other cut can be made by scoring and snapping. Cuts like this are required around door and window openings.



Electrical Outlet Box openings can be made easily by cutting the Durasan as shown by the solid lines in the picture above. Strike a sharp hammer blow to the "X". Cut away back paper.

FORMING A NARROW PLANK WITH TWO FINISHED EDGES



1. Cut Decorative Surface with a sharp knife to a dimension of 1" wider than the panel width desired. Then turn vinyl surface face down.



2. Score Back Surface with knife to the desired panel width. Snap gypsum core and peel this 1" piece from decorative surface. Smooth core if uneven.



3. Wrap the excess flap of vinyl over the exposed gypsum core and staple to back.

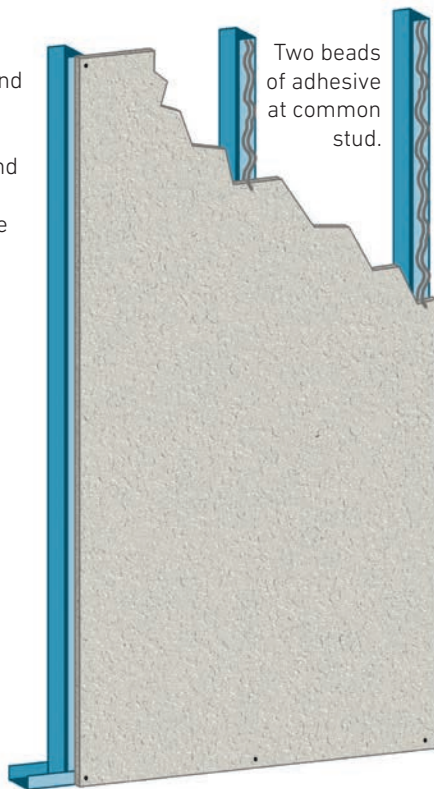
Installation Options

OPTION 1 - ADHESIVE RECOMMENDATIONS

Durasan panels are quality wall paneling products that can be applied to wood studs, provided an appropriate drywall adhesive meeting ASTM C557 is applied to the studs. Durasan panels can be adhesively applied to steel studs, provided an appropriate adhesive recommended for use with vinyl faced gypsum board and steel studs is used. Consult adhesive manufacturer for a suitable adhesive product. Steps for this application, which are limited to walls only, are as follows:

- 1. Durasan panels are applied vertically** to steel or wood studs or to furring strips that are straight, on one plane, and located 16" or 24" o.c.
- 2. All panels must be "bowed,"** or pre-curved the length of the board, so that when applied to the adhesive coated studs, a natural pressure will result at the center of the panel when nailed or screwed top and bottom. (See "Bowing Method" section to right.)
- 3. Each stud that has two panels meeting to form a joint** should have two beads of adhesive, each one located as close to each edge of the stud as possible. This reduces the possibility of adhesive oozing through the joint and getting on the prefinished surface. All other studs must receive a single bead of adhesive. Apply panels within 15 minutes of adhesive application.
- 4. When using adhesive,** nail or screw the panel at the floor and ceiling line, spacing fasteners 6" to 8" apart.
- 5. If cove moulding or baseboards are to be omitted,** you may wish to attach each panel at top and bottom with 1-3/8" matching Color Pins in place of 1-1/4" wallboard nails when using wood studs.
- 6. Immediately remove any adhesive** that may have been deposited on tools or the prefinished surface.

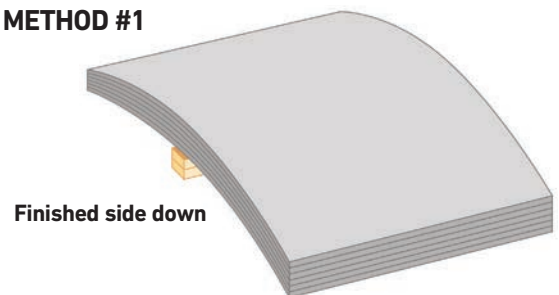
Nailing or screwing is required only at top and bottom of prefinished gypsum panels when adhesive is applied and panels are prebowed to give pressure at the center of the board.



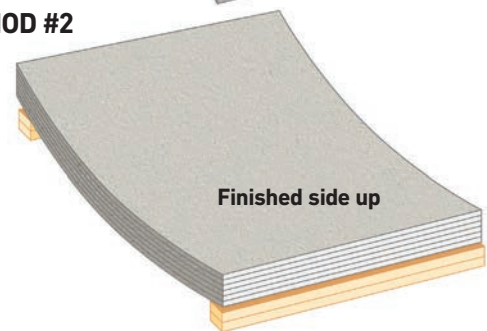
OPTION 2 - LAMINATING RECOMMENDATIONS

- 1. Apply to clean, dry, sound surfaces only.** Remove all wallpaper, high points, calcimine, loose paint, and scratch any other paint for good bond. Test any painted surface by laminating a small sample. Allow to dry and check bond.
- 2. Bow the Durasan panels** (see Bowing Method) so that each panel, when nailed at top and bottom, will have built-in pressure being exerted at the center of the board on the existing wall until the adhesive dries.
- 3. Apply the drywall adhesive with a caulking gun** to the back surface of each panel, using 3/8" diameter beads 16" apart. Apply beads parallel to and 3/4" to 1" from each long edge of the panel.
- 4. Laminate with joint compound.** Durasan can be laminated to existing surfaces with a quick setting compound or ready mix joint compound. Joint compound is applied as nominal 5" (127 mm) ribbons of four 1/4" (6.4 mm) x 1/4" (6.4 mm) beads located around the perimeter and center of the boards. An alternate is 2" (50.8 mm) diameter daubs 1/2" (12.7 mm) thick, 16" (406 mm) o.c.
- 5. Nail or screw panels at top first.** Locate 6d nails or 1-7/8" drywall screws 6" to 8" apart. Press panels progressively from ceiling to floor line. Nail at floor line if necessary. If panels do not stay in proper alignment, add temporary bracing for 24 hours. Use suitable moulding at floor and ceiling line to cover exposed fasteners.

BOWING METHOD #1



BOWING METHOD #2



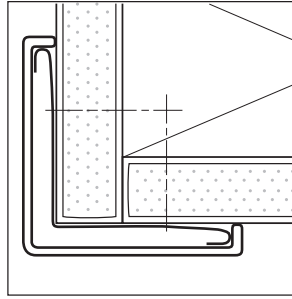
Durasan panels must be warped or bowed to give pressure at the center of the board during adhesive and cementing applications. If the boards were not bowed, temporary bracing would be required. Illustrated are two methods of bowing. Cut to proper ceiling height, and stack as shown with all prefinished surfaces facing up or down depending on which method of bowing is used. Use padded blocks cut from 2 x 4's to protect prefinished surfaces. Stack in a manner that, when applying, each panel would have a tendency to spring away at the top when nailed at the bottom. Proper bowing can take from one to several days depending on weather conditions.

Trim Installation

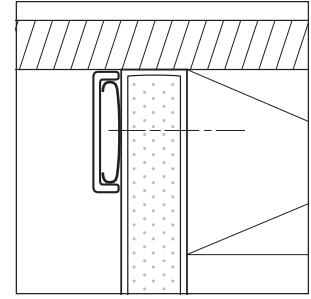
INSTALLING DURASAN SNAP-ON TRIM

- 1. Apply Durasan and base trim** in normal manner before installing outside corner trim, then proceeding with any interior ceiling line and corner trim.
- 2. Cut steel retainers** to fit outside corners, interior ceiling line and corner trim.
- 3. Nail or screw attach retainer strip.** Space fasteners 8" o.c. for interior ceiling line and corner retainers, and 12" o.c. for outside corner retainers. All retainers should begin fasteners 1/2" from each end.
- 4. Cut face cover to length** with tin snip or miter cut. After cutting cover, restore flanges to original configuration by using a screwdriver blade as a wedge. Snap cover over retainer by engaging one leg on retainer flange. Then use palm or thumb pressure until opposite leg engages retainer flange and snaps into place.

EXTERIOR CORNER



INTERIOR CORNER



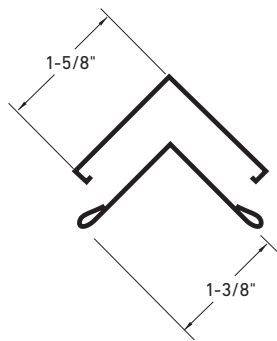
Accessories

MATCHING TRIM (SNAP ON)

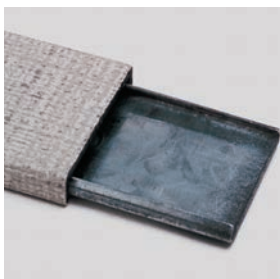
Two-part, snap-on outside corner trim and interior trim consist of galvanized steel retainers and matching vinyl snap-on facings. Both trim pieces are installed after the Durasan panels are erected. Each may be used with any Durasan thickness. Retainers are secured through the Durasan into the framing.

Snap-on interior trim may also be used at interior corners, at ceiling line and as a batten. Snap-on trim can be used in fire-rated assemblies.

SNAP-ON OUTSIDE CORNER TRIM



SNAP-ON INTERIOR TRIM

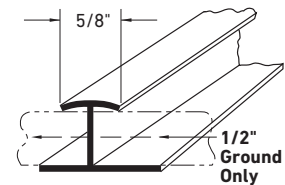


ONE-PIECE MATCHING TRIM FOR 1/2" PANELS

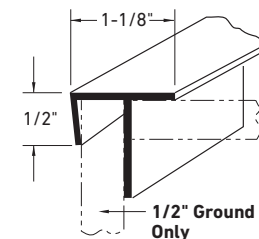
Shapes

Vinyl

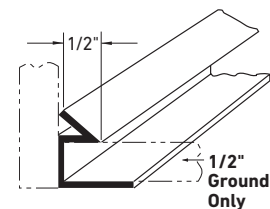
Divider



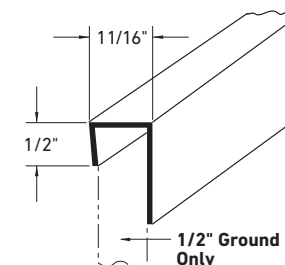
Outside Corner



Inside Corner



End Cap



MATCHING TRIM (ONE PIECE FOR 1/2" PANELS ONLY)

Single-Part Trim (see below) is available in vinyl shapes to match all standard vinyl Durasan colors for 1/2" panels. Dimensions shown are trim for 1/2" panels.

One piece trims are progressive in nature and as such must be installed at the same time as the Durasan panels.



National Gypsum Company

National Gypsum Company is the exclusive service provider of reliable, high-performance building products manufactured by its affiliate companies and marketed under the Gold Bond®, ProForm®, and PermaBASE® brands. The strategic network of Gold Bond, ProForm, and PermaBASE manufacturing facilities located throughout major metropolitan hubs in North America allows us to provide the best in customer service so we can keep your fast-paced projects moving forward.

SUSTAINABILITY

Our brands create products that contribute to sustainable design by providing healthy indoor air quality; moisture, mold and mildew management; durability; optimal acoustics; life safety and increased space functionality. No matter how you define sustainability, we offer the most comprehensive set of value-added solutions in the industry.

TRUSTED PARTNER

The National Gypsum name has been synonymous with high-quality, innovative products and exceptional customer service since 1925. Our technical experts at 1-800-NATIONAL® are always a phone call away to answer any type of product or specification question.

We are Building Products for a Better Future® - one project at a time.

LIMITED WARRANTY AND REMEDIES

Products manufactured by Gold Bond Building Products, LLC ("Seller") are warranted by Seller to its customers to be free from defects in materials and workmanship at the time of shipment. Additional or different express limited warranties, limitations and exclusions may apply to specific Seller products.

Current warranty information on such products for both commercial and residential applications is available at goldbondbuilding.com. THIS EXPRESS WARRANTY IS THE ONLY WARRANTY APPLICABLE TO SUCH PRODUCTS, AND IS IN LIEU OF AND EXCLUDES ALL OTHER EXPRESS ORAL OR WRITTEN WARRANTIES AND ALL IMPLIED WARRANTIES, INCLUDING BUT NOT LIMITED TO THE IMPLIED WARRANTIES OF MERCHANTABILITY AND FITNESS FOR A PARTICULAR PURPOSE.

Seller will not be liable for any incidental, indirect or consequential losses, damages or expenses. The customer's exclusive remedy for any type of claim or action for defective products will be limited to the replacement of the products (in the form originally shipped) or, at Seller's option, to a payment or credit not greater than the original purchase price of the products.

Seller will not be liable for products claimed to be defective where the defect resulted from causes not within Seller's control, or which arose or occurred after shipment, including but not limited to accidents, misuse, mishandling, improper installation, contamination or adulteration by other materials or goods, or abnormal conditions of temperature, moisture, dirt or corrosive matter.

Any claim that products sold by Seller were defective or otherwise did not conform to the contract of sale is waived unless the customer submits it in writing to National Gypsum Services Company d/b/a National Gypsum Company, authorized sales agent and service provider to Seller, within thirty (30) days from the date the customer discovered or should have discovered the defect or non-conformance. No legal action or proceeding complaining of goods sold by Seller may be brought by the customer more than one year after the date the customer discovered or should have discovered the defect or problem of which it complains.

Technical Information

Visit goldbondbuilding.com or call National Gypsum Company Construction Services: 1-800-NATIONAL (628-4662).

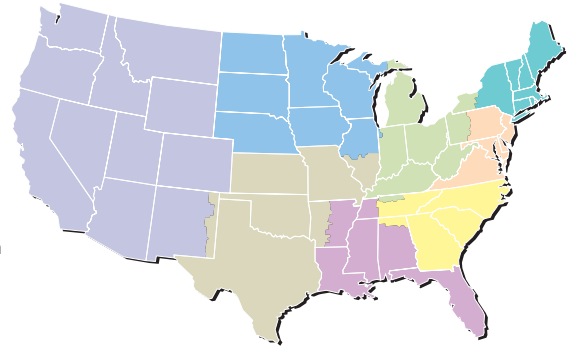
Technical Information Información Técnica

1-800-NATIONAL®
1-800-628-4662

National Gypsum Company is the exclusive service provider for products manufactured by Gold Bond Building Products, LLC. Gold Bond® Durasan® Prefinished Gypsum Board products are manufactured by Gold Bond Building Products, LLC.

Customer Service

- | | |
|--|---|
| Atlantic Area
(800) 237-9167
atlanticarecsrs@nationalgypsum.com | Northeast Area
(800) 253-3161
northeastarecsrs@nationalgypsum.com |
| Central Area
(800) 252-1065
centralarecsrs@nationalgypsum.com | Southeast Area
(800) 548-9394
southeastarecsrs@nationalgypsum.com |
| Gulf Area
(800) 343-4893
gulfarecsrs@nationalgypsum.com | Southwest Area
(800) 548-9396
southwestarecsrs@nationalgypsum.com |
| Midwest Area
(800) 323-1447
midwestarecsrs@nationalgypsum.com | Western Area
(800) 824-4227
westernarecsrs@nationalgypsum.com |



National 
Gypsum®

Exclusive service provider of
Gold Bond Building Products, LLC

Gold Bond®
Building Products

Gold Bond Building Products, LLC
2001 Rexford Road
Charlotte, NC 28211

704.365.7300
goldbondbuilding.com