

**PermaBASE**  
**INSULATED**  
CEMENT BOARD



**The Best Choice  
for Continuous  
Insulation Systems**

**National**   
**Gypsum**®

Exclusive service provider of  
products offered or manufactured by  
PermaBASE Building Products, LLC



# PermaBASE INSULATED CEMENT BOARD



1. Fiberglass Mesh/Mat
2. EdgeTech® Reinforced Edge
3. Cementitious Core
4. Insulation

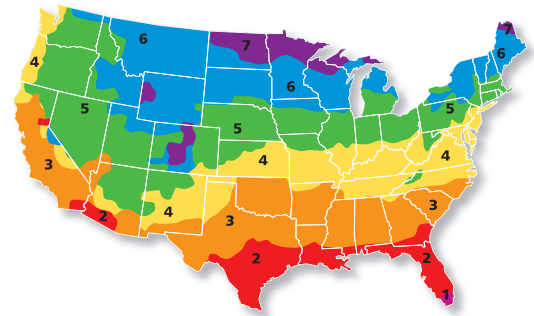
PermaBASE CI® Insulated Cement Board is a composite cement board combining the strength and benefits of PermaBASE® Cement Board with rigid insulation to create an ideal substrate for exterior finishes that meet or exceed most continuous insulation requirements. Manufactured in a convenient 1", 1-1/4", 2" and 3" overall thickness, PermaBASE CI utilizes common trims and accessories.

- **Made with PermaBASE Cement Board and high-density polyiso insulation** to provide durability and highly efficient insulation in one convenient package.
- **Laminated with a R-4, R-6, R-10 and R-16 Insulation**, PermaBASE CI offers a solution that meets or exceeds energy code requirements.
- **Saves time and labor** compared to installing separate insulation and cement board solutions.
- **NFPA 285 approvals** for adhered veneer finishes such as manufactured and natural stone, thin brick and tile as well as direct applied coatings of synthetic stucco.
- **UL GREENGUARD Gold Certification** for low chemical emissions.



## Meet R-Value Needs

With an R-Value from R-4 to R-16 PermaBASE CI meets or exceeds building code requirements.



## ENERGY CODE EXTERIOR INSULATION MINIMUM R-VALUES

Climate Zone	2018 IRC	2018 IBC	2021 IRC	2021 IBC
1	3.8	5	3.8	5
2	3.8	5	3.8	5
3	3.8	7.5	3.8	7.5
4	3.8	7.5	3.8	7.5
5	7.5	7.5	7.5	10
6	7.5	7.5	7.5	12.5
7	7.5	7.5	7.5	12.5

## TECHNICAL DATA

Property	Method	1"	1-1/4"	2"	3"
Dimensional Stability	ASTM D2126	<0.5%	<0.5%	<0.5%	<0.5%
Water Absorption	ASTM C209	<5.0%	<5.0%	<5.0%	<5.0%
Water Vapor Transmission	ASTM E96	<1.5 perm	<1.5 perm	<1.5 perm	<1.5 perm
Flame Spread	ASTM E84	<25	<25	<25	<25
Smoke Developed	ASTM E84	<450	<450	<450	<450
R-Value	ASTM C518	4	6	10	16
Dimensions	ASTM C473	1" x 48" x 8'	1.25" x 48" x 8'	2" x 48" x 8'	3" x 48" x 8'
Weight (lbs./sq. ft.)		2.2	2.3	2.4	2.6

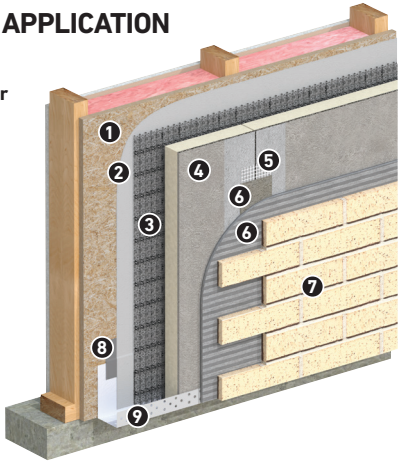
## SIZES AND PACKAGING

Thickness, Width and Length	Pieces per Unit
1" x 48" x 8' (25.4 mm x 1,219 mm x 2,438 mm)	40*
1-1/4" x 48" x 8' (31.7 mm x 1,219 mm x 2,438 mm)	32*
2" x 48" x 8' (50.8 mm x 1,219 mm x 2,438 mm)	20
3" x 48" x 8' (76.2 mm x 1,219 mm x 2,438 mm)	16*

\* Special Order

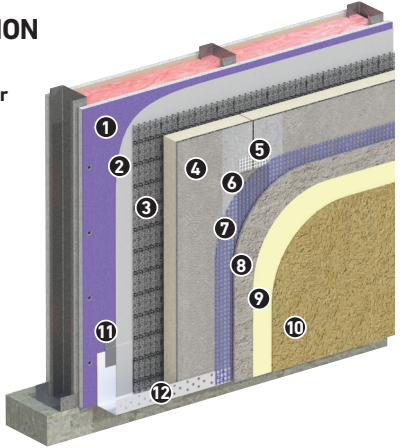
## MASONRY VENEER APPLICATION

1. Sheathing
2. Weather Resistant Barrier
3. Drainage
4. PermaBASE CI Cement Board
5. Mesh Tape
6. Modified Mortar
7. Thin Stone Veneer
8. Flashing Tape
9. Weep Screenshot



## STUCCO APPLICATION

1. Sheathing
2. Weather Resistant Barrier
3. Drainage
4. PermaBASE CI Cement Board
5. Mesh Tape
6. Basecoat
7. Reinforcing Mesh
8. Basecoat
9. Primer
10. Finish Coat
11. Flashing Tape
12. Weep Screenshot



## TECHNICAL INFORMATION

Visit [permabase.com](http://permabase.com) or call National Gypsum Company Construction Services: 1-800-NATIONAL (628-4662).

*Technical Information* Información Técnica

**1-800-NATIONAL®**

1-800-628-4662

National Gypsum Company is the exclusive service provider for products manufactured by PermaBASE Building Products, LLC.

PermaBASE CI® Insulated Cement Board is manufactured by PermaBASE Building Products, LLC.



**PermaBASE®**  
Building Products

PermaBASE Building Products, LLC  
2001 Rexford Road  
Charlotte, NC 28211

704.365.7300  
[permabase.com](http://permabase.com)