

nox-crete[™]

chemical solutions to concrete problems

Duro-Nox

Duro-Polish

**DURO-FLOOR
CLASSIC**

SYSTEM FOR CONCRETE FLOORS



SUPERIOR
PROTECTION
+
**HIGH
GLOSS**

Duro-Nox

Liquid Silicate Based Hardener, Sealer and Dustproof for Concrete Floors.

Chemically reactive and water based - for permanent protection and safe application.

Duro-Nox penetrates the pores of concrete surfaces and chemically reacts with the free limes present to form calcium silicate gels which permanently harden, densify and seal the concrete surface to the depth of penetration.

- Treated concrete surfaces have increased resistance to abrasion, impact and wear.
- Reduces the absorption of water, dirt, oil and grease.
- Treated surfaces last longer, look better and cost less to maintain.
- Water based formulation contains no VOCs and is non-toxic.
- 20-Year performance warranty is available.
- **Duro-Nox LS Maximum Performance** lithium silicate formulation offers the same performance and protection as Duro-Nox, but eliminates rinsing and hazardous waste water disposal. Also available in **controlled performance** for color treated floors, **Duro-Nox LSC**.



Ideal For

Wareh

Distributio

Large Reta

Office Co

Auditori

Sports C

Food Pro

Plan

Correc

Institu

Bottling

Duro-Polish

Synthetic Polymer Floor Polish For Concrete, Tile And Stone Floors.

Unique, high gloss formulation - for immediate shine with durable, long-lasting wear.

Duro-Polish penetrates and bonds, creating a hard, high gloss finish that doesn't require buffing to maintain gloss. Unlike any other product on the market, Duro-Polish also adds slip resistance to treated surfaces.

- **High gloss finish does not require buffing and is scuff and scratch resistant.**
- **Concentrated, economical formula is dilutable up to 1:2 with water, depending upon gloss requirements.**
- **Safe to use and easy to apply - water based, low odor, no fumes.**
- **Adds slip resistance to treated surfaces. Meets the Static Coefficient Of Friction requirements of ASTM D-2047.**

Use In:

Houses

Convention Centers

Retail Centers

Complexes

Museum And
Centers

Processing
Plants

Industrial
Locations

Greenhouses



Duro-Polish Plus

Synthetic Polymer Floor Polish
With Integral Stain Blocking
Additive For Concrete Floors.

24 Hours of Continuous Contact

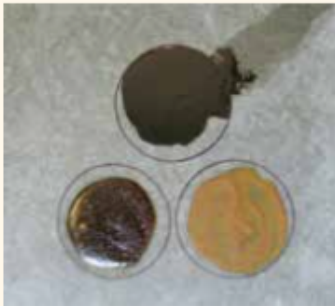
Both samples were tested with:

Used Motor Oil

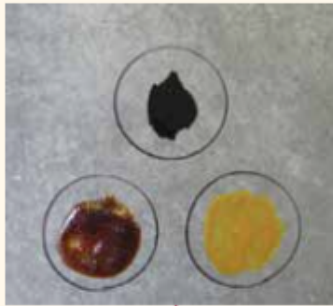
BBQ Sauce

Yellow Mustard

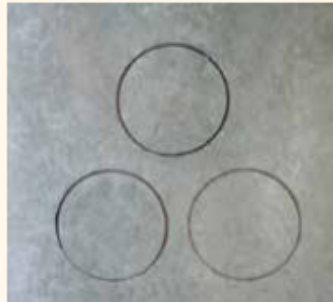
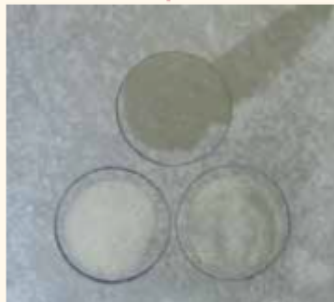
Duro-Nox Treated Concrete



Duro-Nox & Duro-Polish Plus Treated Concrete



Results After Cleaning



Stain Resistance

Evaluation Scale

Testing was conducted on smooth, steel troweled concrete samples. Both samples were treated with DURO-NOX liquid silicate hardener. The DURO-POLISH PLUS treated sample received 2 coats of DURO-POLISH PLUS according to our recommended application instructions.

0 = No Stain 1 = Very Light Stain 2 = Light Stain
3 = Moderate Stain 4 = Heavy Stain 5 = Very Heavy Stain
6 = Light Etching

24 Hour Stain Resistance

	DURO-NOX TREATED CONCRETE	DURO-NOX & DURO-POLISH PLUS TREATED CONCRETE
Cooking Oil	4	0
BBQ Sauce	1	0
Used Motor Oil	5	0
Mayonnaise	3	0
Red Wine	2	0
Pickle Relish	6	0
Yellow Mustard	3	0
Apple Cider Vinegar	6	0

Formulated with a special **stain blocking additive** - for stain protection that works overtime.

Offering all of the advantages and compatibility of Duro-Polish, **Duro-Polish Plus** protects concrete floors treated with silicate or silicate based liquid hardeners from staining caused by the most common stain-causing agents found in grocery stores, restaurants, warehouses and distribution centers.

- Same advantages and compatibility as offered by Duro-Polish.
- Special stain blocking additive offers stain protection from most common stain-causing agents.



Duro-Nox, Duro-Nox LS, Duro-Nox LSC, Duro-Polish And Duro-Polish Plus Are Guaranteed To Be Compatible With Silcoseal Tilt-Up Cure And Bondbreakers And All Other Products In Our Tilt-Up Partner Product System.

Duro-Nox, Duro-Nox LS, Duro-Nox LSC, Duro-Polish And Duro-Polish Plus Are Part Of The Nox-Crete Green Engineered™ Line Of Products - Designed To Be Safer For People And The Environment.



Some Of The Many Completed Projects Include:

Exposed concrete is the preferred floor finish for many warehouses, distribution centers, large retailers and other commercial projects being built today. Whether the concrete is left a natural gray, integrally colored or stained, all owners expect their floors to work hard, look good, be easy to clean and have a longevity that surpasses more traditional floor coverings.



Duro-Nox, Duro-Polish and Duro-Polish Plus are formulated to provide a durable, attractive concrete floor that performs up to your expectations while also meeting the compatibility and application needs of the design and construction process. These products are components of our **Tilt-Up Partner Products** which have guaranteed compatibility with each other and Silcoseal bondbreakers.



Watch The Application Video Online At
www.nox-crete.com



Video links are available on both the Duro-Nox page and the Duro-Polish page. Or use the Contact Us tab to send us a request for a copy of the DVD.

ADP
ACE HARDWARE
AW OF NC
BEST BUY
BLACK & DECKER
BUDWEISER
CATERPILLAR
CIRCUIT CITY
COCA-COLA
GEORGIA-PACIFIC
HARBOR FREIGHT
HEIDELBERG DISTRIBUTING
HOME DEPOT
IOWA STATE FAIR
KIA
MICHAELS
NAUTICA
SAFECO FIELD
SAVE A LOT
SARA LEE HOSIERY
7-UP
SHOP 'N SAVE
SOLO CUP
SPOKANE CONVENTION CENTER
SUBARU OF AMERICA
SUZUKI
SWEETHEART CUP
WHIRLPOOL

A FULL LIST OF COMPLETED PROJECTS IS AVAILABLE.

DURO-FLOOR **CLASSIC**

SYSTEM FOR CONCRETE FLOORS

**Nox-Crete
Products Group**

1444 S. 20th St. • Omaha, NE USA
Phone (800) 669-2738
(402) 341-1976

www.nox-crete.com

**SUPERIOR
PROTECTION
+
HIGH
GLOSS**



chemical solutions to concrete problems