



chemical solutions to concrete problems

STAIN, SEAL AND PROTECT CONCRETE

# NOX-CARB



WATER REPELLENT, CONCRETE STAIN AND SEALER FOR EXTERIOR VERTICAL SURFACES

**Nox-Carb** is a penetrating, breathable, water repellent stain and sealer for concrete and masonry. **Nox-Carb** combines a 100% low molecular weight methyl methacrylate acrylic resin with a patented silane to provide a dual line of defense that chemically protects substrates to prevent water entry while allowing water vapor transmission to occur unimpeded.

## ADVANTAGES OF NOX-CARB

- Vibrant color is U.V. resistant and will not fade, chalk or peel
- Provides enhanced resistance to water absorption and prevents freeze/thaw damage
- Sealed surfaces become self-cleaning with rain
- Penetrates into capillaries and micro-pores and chemically reacts to form a weather-proof, protective barrier
- Allows treated substrate surfaces to breathe
- Texture additive options available for improved masking of substrate surface defects
- Reduces efflorescence on all treated surfaces
- Protects against chloride ion absorption



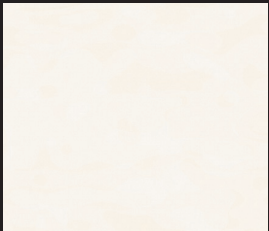
Applies easily using roller, brush or airless sprayer.



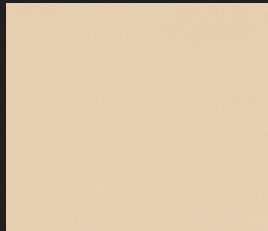
TEST DATA Nox-Carb	
Adhesion ASTM D-4541	600 psi
Water Absorption ASTM C-642	After 48 Hours <0.40%
Water Absorption ASTM D-6489	24 Hours >95% Reduction 48 Hours >94% Reduction
Water Absorption, Rilem Tube Method	Concrete Block 95% Reduction Precast Concrete 96% Reduction
Water Vapor Transmission ASTM D-1653, Method B, Condition A	2.4 grains/ft <sup>2</sup> /hr (40.3 grams/m <sup>2</sup> /24 hrs)
Water Vapor Permeance ASTM D-1653, Method B, Condition A	5.8 Perms (3.8 Metric Perms)



**STANDARD COLORS**



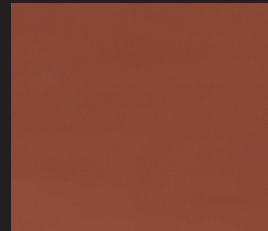
ANTIQUE WHITE



BUFF



CONCRETE GRAY



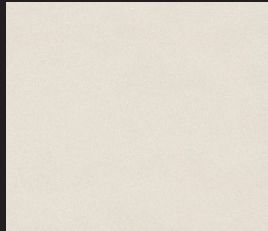
IRON RED



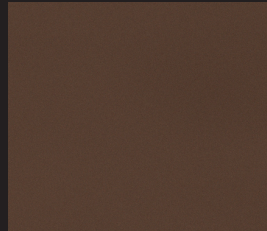
LIGHT SKY GRAY



MEDIUM CARDSTOCK BROWN



MISSION WHITE



MOCHA



BURNT RED

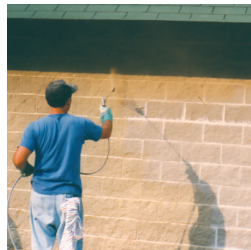


RIVERSIDE MEDIUM GRAY

CUSTOM COLORS AVAILABLE  
CALL 402.341.2080 FOR DETAILS

**IDEAL USES FOR NOX-CARB**

- tilt-up • precast • cast-in-place • concrete masonry • brick masonry • bridges • warehouses
- offices • food processing plants • retaining walls • retail shops • convention centers • stadiums



402-341-2080



chemical solutions to concrete problems

www.nox-crete.com