

nox-crete®

chemical solutions to concrete problems

PRECAST



## CASTING A BRIGHTER LIGHT ON CONCRETE

Nox-Crete has been a trusted provider of products for the precast industry for more than 65 years. With the development of the world's first chemically active form release agent in 1956, Nox-Crete continues to develop, manufacture and market innovative products to assist the precast industry.

Whether your requirements call for a high performance architectural form release agent, products to make your panels look more attractive or equipment maintenance products or the manufacture of an entirely new formwork system – Nox-Crete has a cost-effective, labor-saving solution for you.

PRODUCTS	PAGE
APPLICATION EQUIPMENT.....	3
ARCHITECTURAL RELEASE AGENTS.....	4
ECONOMICAL RELEASE AGENTS.....	5
SPECIALTY RELEASE AGENTS.....	6
FORM SEALERS.....	6
FORM SEALER APPLICATION ACCESSORIES.....	7
FORM AND EQUIPMENT MAINTENANCE PRODUCTS...7-8	
EVAPORATION REDUCER.....	8
CURING COMPOUND.....	8
THERMAL BREAKS/ATTACHMENT EMBEDS.....	8
PVC RUSTICATION.....	9
MAGNET CLAMPS, SIDIFORMS & ACCESSORIES.....	10
SOCOMAP - AUTOMATED FINISHING SYSTEMS.....	10
MOLDTECH FORMS AND EQUIPMENT.....	11
NOX-CRETE HISTORY.....	12





chemical solutions to concrete problems

**CALL TODAY**

**For a FREE in-plant demonstration on any of our precast products!**

---

**402-341-2080**

[www.nox-crete.com](http://www.nox-crete.com)

Learn how our products can bring value to your precast facility!



## GREEN ENGINEERED PRODUCTS

Since the early 1980s, Nox-Crete has been committed to developing products that are Green Engineered®. Nox-Crete products with this label are specially designed to be safer for both people and the environment. The cornerstone of our Green Engineered® concept is our research and development of water-based products.

Green Engineered® products from Nox-Crete are performance-driven and designed to the highest quality standards using safer raw materials. With Green Engineered® products, design and construction professionals can meet the expectations for project design and construction without compromise to product performance or the world we share.





# APPLICATION EQUIPMENT

## PERFECT PRECAST SPRAYER

**Precast-Grade/Heavy Duty Hand Pump and Compressed Air-Filled Sprayer**



Perfectly designed for consistent and trouble-free application of concrete form release agents for the precast industry. The sprayer can be hand pumped or charged from an external air source to a maximum pressure of 116 psi (800 kPa). Uses constant flow (CF) valves to regulate spray tip pressures to 60 psi (414 kPa) or 40 psi (276 kPa), depending on pressure required to achieve a uniform spray pattern. Equipped with a heavy-duty hammer-finished tank, stainless steel wand and heavy-duty trigger valve, in-line 100-mesh filter, air pressure gauge, spare parts container and chemically resistant hose, seals and gaskets.

## FEATURES:

- Heavy-Duty and Built-to-Last
- High-Pressure
- Built-In Pressure Gauge
- Finer Tips for Consistent Coverage Rates
- Constant Flow (CF) Valve for Control of Pressure

## MICROFIBER APPLICATOR

**Product Applicator**

A heavy duty, commercial-grade microfiber applicator with aluminum frame and telescoping pole. Used to even out spray applications of release agents on precast forms to produce bright white concrete finishes. Microfiber applicator and pads are available in 24 inch (61cm) and 36 inch (91cm) sizes.



# FOAMERS

**SPECIAL OFFER!**

Order 2 drums or 1 tote of  
**Blast-Off Foam Concentrate** and  
receive a **Perfect Power Foamer**  
**FREE! (\$1,300 Value)\***

\*One per customer/location

## PERFECT PUMP FOAMER

**Hand Pump Foamer**

The Perfect Pump Foamer is specifically designed to produce a thick, rich foam that clings to vertical surfaces for the application of Blast-Off and Kem-Ex-It Plus. Manufactured with a heavy-duty polypropylene tank and equipped with a wide mouth and funnel cap for easy filling, Viton® seals for extended durability and a built-in pressure relief valve. The pro-wand and spray tip on the Perfect Pump Foamer maximizes the performance of Blast-Off concrete buildup and splatter remover.



## WALL-MOUNTED PERFECT POWER FOAMER

**Commercial-Grade, Wall-Mounted Foaming Spray Pump for Spraying Ready-Mix trucks and Other Large Equipment.**

The wall-mounted Perfect Power Foamer is specifically designed to produce and propel a thick, rich foam long distances to reach large equipment. The foam clings well to vertical surfaces, **maximizing the performance of Blast-Off Concrete Buildup and Splatter Remover.** The Perfect Power Foamer comes equipped with a 50' hose, heavy-duty spray wand and is ideal for use on ready mix concrete trucks and other large equipment.

The Perfect Power Foamer also has the ability to dilute and apply Blast-Off Neutralizer to neutralize residual Blast-Off Foam Concentrate to a neutral pH for safe disposal in sanitary sewers.



## ARCHITECTURAL RELEASE AGENTS

### RELEASE AGENT #10

- Petroleum Based • Water Based

#### Maximum Performance Architectural Form Release Agent

Produces architectural concrete surfaces free of staining with reduced surface void defects (bugholes). Ideal for form applications requiring an ultra-thin film release agent that is both fast drying and less slippery in horizontal deck applications. Performs extremely well with Type 1L cement containing mix designs. Available in both water-based and a USEPA Inherently Biodegradable version that complies with OECD 301 and multiple other versions to meet all federal, state and local VOC requirements.



RELEASE AGENT #10

### PRECAST RELEASE #80

- Petroleum Based

#### Maximum Performance Form Release Agent

A highly reactive formulation that combats SCC and other aggressive concrete mix designs. Precast Release #80 combines chemical and barrier components to produce architectural concrete surfaces free of staining with reduced surface void defects (bugholes). Ideal for use on steel forms in steam-curing applications. Performs well with Type 1L concrete mix designs and with other sticky mix designs containing high amounts of cement, fly ash, silica fume or high-range water reducers. Available in a USEPA inherently biodegradable version that complies with OECD 301.



PRECAST RELEASE #80

### BIO-NOX

- Water Based

#### Maximum Performance, 100% Biodegradable Form Release Agent

Produces architectural concrete surfaces free of staining with reduced surface void defects (bugholes). Unparalleled performance on most non-absorptive form surfaces. Ideal for use on all rubber, plastic or fiberglass forms and form liners and on all form surfaces sensitive to petroleum-based solvent attack. Performs extremely well with Type 1L cement containing mix designs. USEPA Readily Biodegradable - Complies with OECD 301.



BIO-NOX

## CLEAN RELEASE

### THE COMPETITION



#### nox-crete CLEAN RELEASE

- Mild Odor
- Resists Wash-off
- Easily Applied
- Provides a Crisp, Positive Release



COMPETITOR PRODUCTS

[www.nox-crete.com](http://www.nox-crete.com)

Clean Release offers both Quality & Value!

# ECONOMICAL RELEASE AGENTS

## DRY-CAST RELEASE

- **Petroleum Based**

**Dry-Cast Release Agent for Concrete Pipes, Masonry Units and Pavers**

A petroleum-based, combination chemically active and physical barrier type form release agent design for use with dry-cast concrete. It positively prevents form binding as well as the accumulation of concrete buildup and allows entrapped air to easily migrate along form surface during vibration, producing crisp, uniformly colored and void-free concrete. USEPA Inherently Biodegradable – Complies with OECD 301.



**DRY-CAST RELEASE**

## CLEAN RELEASE

- **Petroleum Based**

**Economical Form Release Agent**

Combines both chemically active and barrier components resulting in a value engineered product with low odor and good sprayability designed to meet competitive market conditions. Available in multiple versions with varying levels of chemical reactivity to accommodate the most difficult concrete mix designs.

## FORM & EQUIPMENT MAINTENANCE

### FOUR-ACT

- **Petroleum Based**

**Highly Chemically Reactive Concentrate for Raising Reactivity on Economical Release Agents**

Four-Act is a concentrated, petroleum-based, highly reactive formulation that chemically reacts with fresh concrete to prevent bonding with existing concrete and to soften buildup on both aluminum forms and all types of concrete handling and placing equipment. Four-Act can also be diluted and used as a form release agent.

## PALLET-NOX

- **Water Based**

**Economical, Concentrated, Dry-Cast Release Agent for Concrete Pipe, Masonry Units and Pavers**

A concentrated, 100% Biodegradable dry-cast form release agent that is chemically active and easily dilutes with water to achieve optimum results for economical usage. Performs well in dip tank applications. USEPA Readily Biodegradable – Complies with OECD 301.



## PRO-RELEASE 3.0

- **Water Based**

**Economical, General Purpose, Concrete Form Release Agent**

Pro-Release 3.0 offers Nox-Crete performance at an economical price. Combines low odor, chemically active and barrier-type components for improved release performance with most concrete mix designs. For use on steel, aluminum, fiberglass and overlaid plywood forms.



**PRO-RELEASE 3.0**



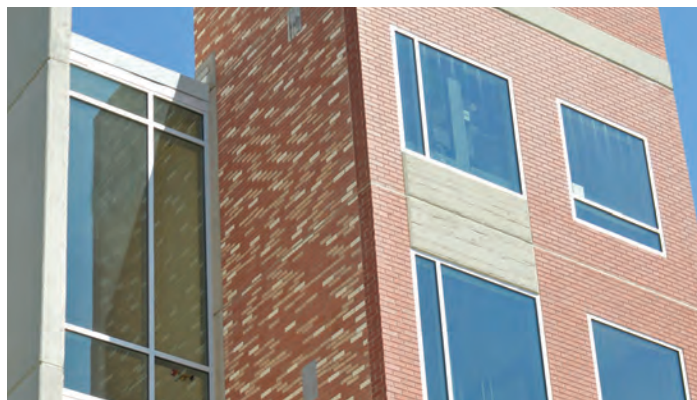
## SPECIALTY RELEASE AGENTS

### BRICK RELEASE

- Water Based

#### **Protective Treatment for Thin Brick**

A superior, cost-effective alternative to traditional thin brick waxing in precast applications. Protects the face of thin brick from concrete slurry staining. Much easier to apply and remove compared to wax. Does not require the use of hot water for removal. Complies with all federal, state and local VOC requirements.



BRICK RELEASE

### FOAM RELEASE

- Water Based

#### **Release Agent for Foam Forms**

Foam Release is a thickened combination chemically active and physical barrier-type release agent for use on foam that prevents concrete sticking to substantially reduce form-stripping time. Used on Expanded Polystyrene (EPS), extruded polystyrene, polyurethane and polyisocyanurate forms, knockouts and void formers. A bright colored, pH-sensitive pink dye is added to ensure uniform coverage. Complies with all federal, state and local VOC requirements.



FOAM RELEASE

## FORM SEALERS

### CLEAR PRE-FORM®

- Low Build

#### **Penetrating, Moisture Cured Polyurethane Sealer for Wood Forms**

Seals and protects all types of wood. Prevents wood sugar migration and resulting concrete surface dusting and retardation. Preserves the natural texture of rough-sawn or embossed wood panels used to produce board-marked concrete.

### PRE-FORM® HB

- High Build

#### **Flexible Polyurethane Coating System**

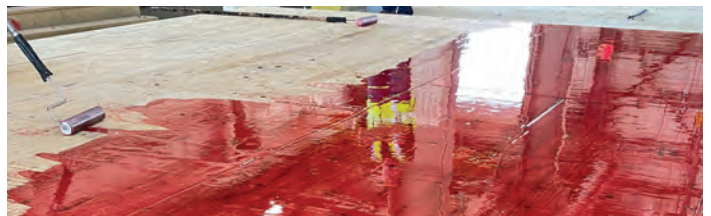
Used to overlay or resurface plywood or steel forms. Creates uniformly smooth surfaces by covering up all surface imperfections, screw holes, gouges, splits and cracks. Prevents wood grain pattern telegraphing of plywood forms onto formed concrete surfaces. Ideal for use on plywood form tables and worn out steel forms.

### PRE-FORM® 100

- High Build

#### **Solvent-Free, Self-Leveling Rigid Epoxy Coating for Sealing Plywood and Oriented Strand Board (OSB) Forms**

Seals and protects plywood and OSB wood panels in architectural casting bed applications. Allows for multiple reuses of sealed wood. Creates a rigid, impact-resistant casting surface that is seamless, smooth and long lasting. Available in clear, red and white for ease of application. Fast cure versions are also available for cold temperature applications.



PRE-FORM® 100

## FORM SEALER APPLICATION ACCESSORIES

### 28" TORNADO POWER MIXER

Ideal for mixing Nox-Crete's Pre-Form HB and Pre-Form 100 sealers. Made with 7" polypropylene blade with 3/8" hex shaft, fits any standard 1/2" slow speed drill.



### 24" SPIKED ROLLER

Spiked roller with aluminum frame, used for eliminating bubbles and leveling Nox-Crete's Pre-Form HB and Preform 100.



### 26" SERRATED SQUEEGEE BLADE/FRAME

Precision application squeegee system with a self-leveling 25-30 WFT MILS. The applicator squeegee is used for proper application of Nox-Crete's Pre-Form HB and Pre-Form 100. The rubber blade allows flexibility of application thickness through pressure and angle applied.



## FORM AND EQUIPMENT MAINTENANCE PRODUCTS

### BIO-CLEAN PLUS

- Water Dilutable

**Concentrated, Biodegradable, Citrus-based Stripper, Consumer Products Compliant**

Bio-Clean Plus is a powerful, water dilutable stripper that penetrates form surfaces to safely and effectively remove oil, grease, dirt, adhesives and other residue.

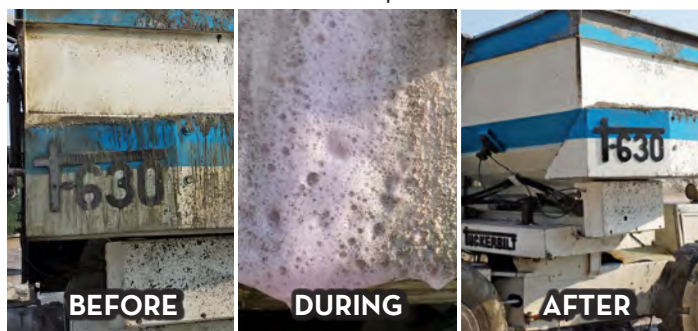


### BLAST-OFF®

- Water Based

**Fast-Acting, Non-Corrosive Biodegradable Concrete Remover**

Available in concentrated or ready-to-use versions. Quickly removes cement and concrete buildup on concrete forms, mixers, pumps, screeds, tools and more, and is non-corrosive to equipment and electrical components. Fast-acting organic acid derived from sugar beets; contains no mineral acids. Does not remove aluminum form seasoning when used to remove buildup on aluminum forms. For maximum results, use with Nox-Crete's Perfect Pump Foamer.



BLAST-OFF®

### FORM ARMOR

**Protective Corrosion Inhibitor**

Prevents steel forms from rusting during long-term storage. Form Armor chemically reacts immediately after application to form a protective coating that is both chemically and physically bonded to the form surface. Form Armor protects precast steel forms from rust corrosion for up to six months.



FORM ARMOR

### KEM-EX-IT PLUS

- Water Based

**Rust and Concrete Buildup Remover**

Chemically breaks down and dissolves rust, concrete buildup and splatter on steel forms. Quickly removes rust resulting from forms left outside during storage. Eliminates the need for wire brushing or grinding. Deposits a protective chemical barrier on treated steel surfaces that protects forms against flash rust.



KEM-EX-IT PLUS



**FORM AND EQUIPMENT MAINTENANCE PRODUCTS**

**DEACTIVATOR**

- Petroleum Based

**The Original, Chemically Active Concrete Equipment Cleaning Compound and Maintenance Coating**

Deactivator chemically reacts with the alkalis in concrete to prevent fresh concrete from bonding and gradually soften existing concrete buildup. When applied to mixers, conveyors, pumps and other types of concrete handling equipment, Deactivator prevents the adhesion and accumulation of concrete buildup. Complies with all federal, state and local VOC requirements.

**FORM CLEAN**

- Petroleum Based

**Dual Purpose Form Cleaner and Form Release Agent**

Form Clean chemically reacts with fresh concrete to prevent bonding while softening existing buildup on aluminum, steel, plastic, and overlaid plywood forms. Through repeated use, softened buildup is easily removed by a pressure washer, making Form Clean a cost-effective alternative to abrasive blasting, acid washing and scraping. Complies with all federal, state and local VOC requirements.

**EVAPORATION REDUCER**

**MONOFILM**

- Water Based

**Surface Evaporation Reducer for Concrete**

Monofilm extends concrete finishing working time during hot, dry and/or windy conditions. When applied on freshly placed concrete, Monofilm creates a monomolecular protective layer that reduces surface moisture evaporation by up to 80%. Monofilm reduces surface crusting, shrinkage cracking and the development of moisture envelopes that lead to spalling. Available in concentrated and ready-to-use versions.



**CURING COMPOUND**

**BRO-CURE®**

- Water Based

**Silicate Based Curing Compound**

An economical, inorganic precast curing compound that reacts with fresh concrete to cure by densifying the surface without changing the normal concrete surface texture. Bro-Cure is non-membrane forming, and leaves no residue which could interfere with the bonding of subsequent surface treatments, eliminating the need for mechanical or chemical removal. Bro-Cure contains a red fugitive dye for easy, uniform application.



**ATTACHMENT EMBEDS**

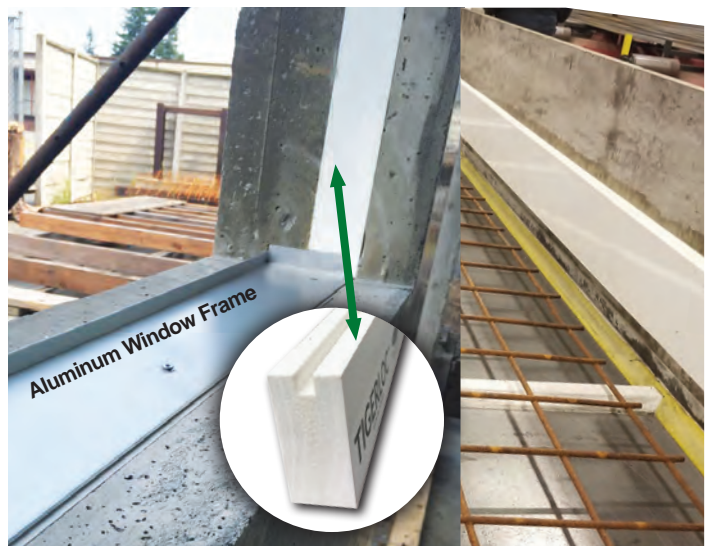
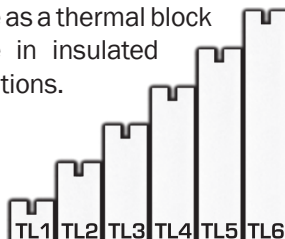
**TIGERLOC™**

**Structural, High-Strength Window and Door Attachment Embed for Concrete Wall Panels**

TigerLoc™ replaces dimensional lumber as a window and door embed and will not twist, warp or rot. TigerLoc's™ patented structural design allows concrete to flow into the edge groove for a secure hold. Window and door frames are quickly and firmly attached using conventional attachment methods without creating hazardous silica dust resulting from drilling into concrete. TigerLoc™ is sound and vibration absorbent and has a low thermal conductivity and a high insulating value making it ideal for use as a thermal block to ensure energy code compliance in insulated concrete sandwich wall panel applications.

**AVAILABLE DIMENSIONS**

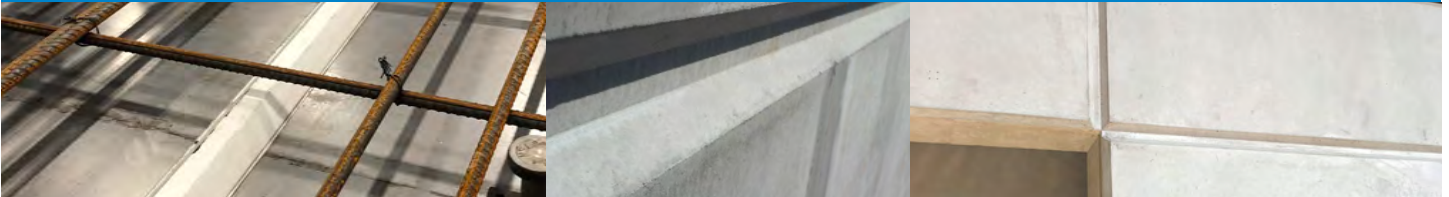
- TL1 - 1in.W x 1in. x 8ft.
- TL2 - 2in.W x 1in. x 8ft.
- TL3 - 3in.W x 1in. x 8ft.
- TL4 - 4in.W x 1in. x 8ft.
- TL5 - 5in.W x 1in. x 8ft.
- TL6 - 6in.W x 1in. x 8ft.



**DOOR & WINDOW FRAMES FASTEN SECURELY ONTO TIGERLOC**



# PVC RUSTICATION



## CLEAN LINE REVEAL®

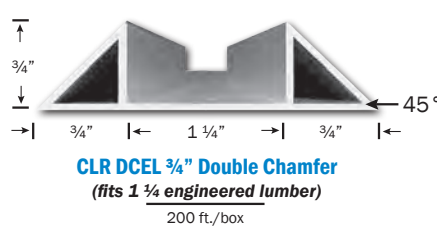
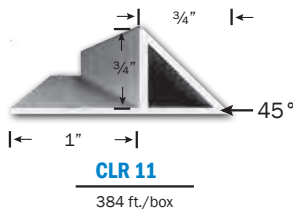
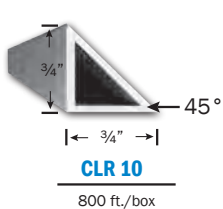
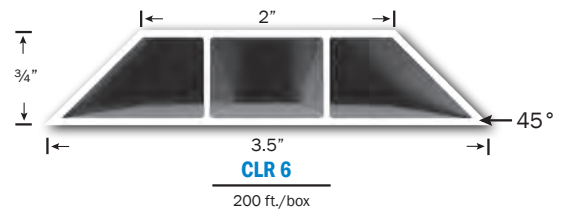
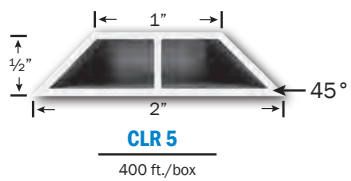
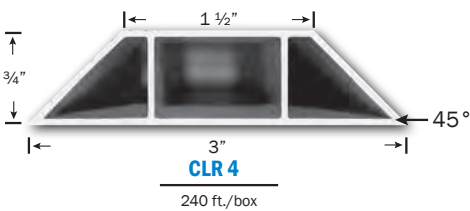
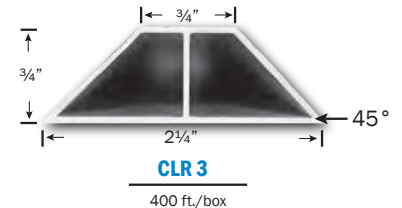
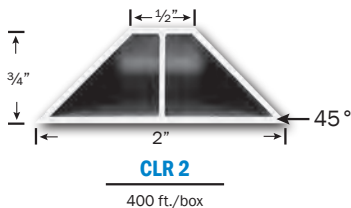
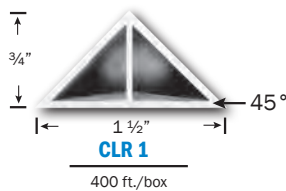
### Standard and Custom Extruded High-Density PVC Reveal for Precast

Made from high density PVC, Clean Line Reveal® is used to create design details and chamfered edges on precast panels. Available in 12 different profiles including a double chamfer, Clean Line Reveal® can be easily cut to length and glued in place using either cartridge or spray adhesives. The finished panel is left with an incredible smooth and uniform finish without concrete surface retardation or discoloration that can be caused by wood sugar migration from traditional wood reveals. Additional profile designs available with minimum order quantity.



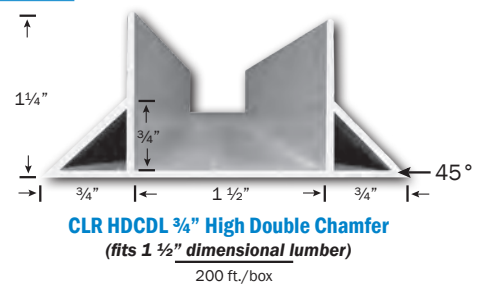
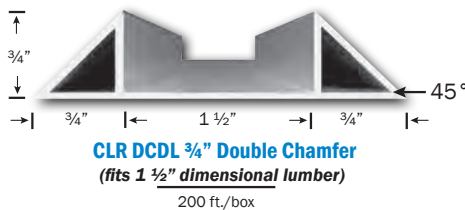
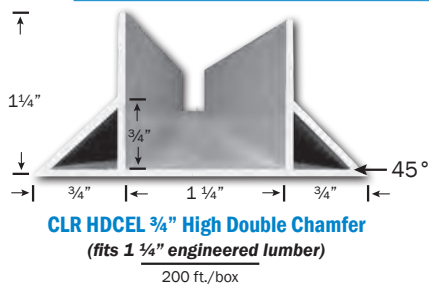
CLEAN LINE REVEAL®

## STANDARD PROFILES



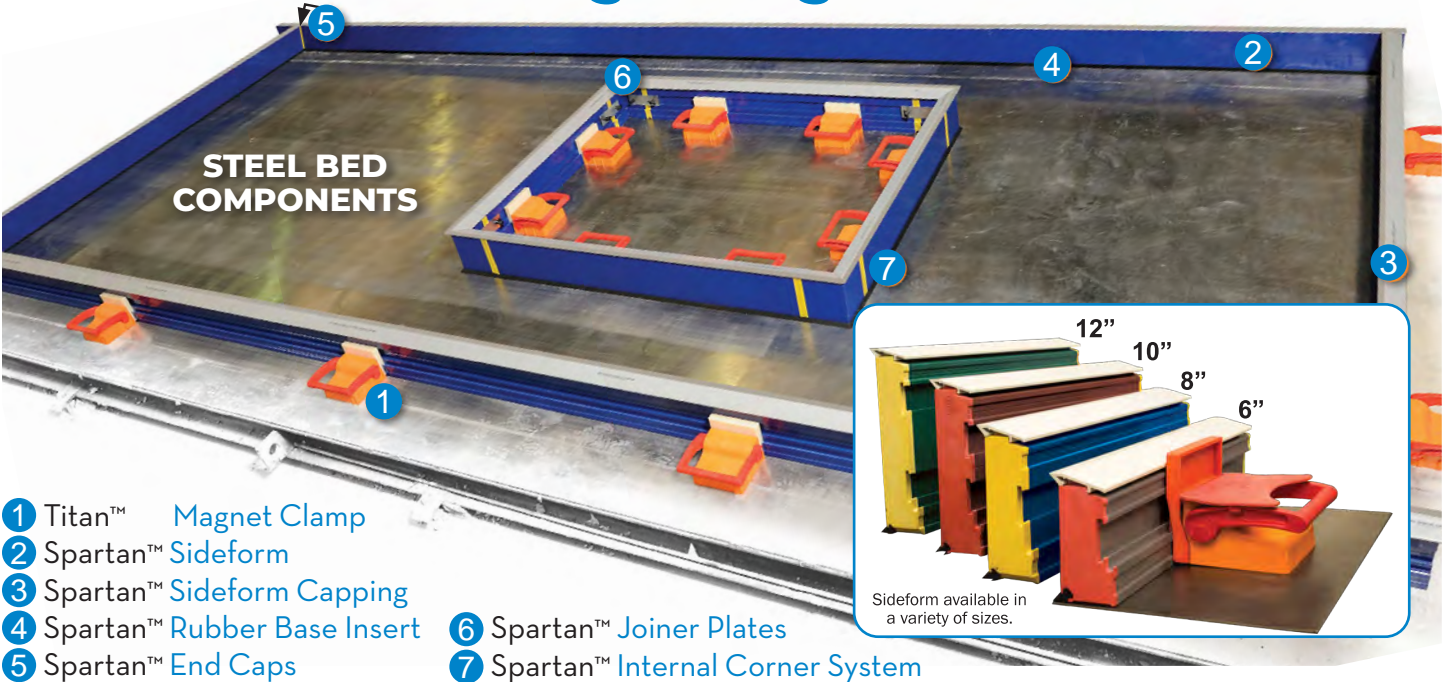
### Advantages:

- Uniform Finish
- Clean Release
- Easy Removal
- Lightweight & Durable
- Easy Installation/Fastening
- Eliminates Wood Retardation
- Reusable/Cost Savings



**MAGNET CLAMPS, ALUMINUM SIDEFORMS AND ACCESSORIES**

**Smarter. Easier. Lightweight. Reusable. Safer.**



- 1 Titan™ Magnet Clamp
- 2 Spartan™ Sideform
- 3 Spartan™ Sideform Capping
- 4 Spartan™ Rubber Base Insert
- 5 Spartan™ End Caps
- 6 Spartan™ Joiner Plates
- 7 Spartan™ Internal Corner System

**MAGNET CLAMP & ALUMINUM SIDEFORM** - The SRB Precast Formwork System is a unique, lightweight, durable system that consist of the Titan™ Magnet Clamps and Spartan™ Sideforms. Together, these products provide unparalleled levels of accuracy, flexibility, efficiency and safety to precast plants.

**NOX-CRETE IS THE DISTRIBUTOR OF SRB TITAN MAGNET CLAMPS AND SPARTAN SIDEFORMS**

**SOCOMAP - AUTOMATED PRECAST FINISHING SYSTEMS**



**Versatile Finishing Control Center for Precast Walls**

Expand your finishing capabilities, achieve the highly desirable look of polished concrete and granite with Socomap. Design panels with a polished or textured architectural face that includes the ability to grind in rustication features, engravings and more. Water is used during this process to eliminate silica dust. Socomap is the only machine of its kind to do these treatments vertically.

**What capabilities can Socomap add to your operation?**

- Polishing
- Grooving
- False Joints & Rustication Features
- Brushing
- Sanding
- Brush Hammering
- Engraving
- Honing
- Oblique Grooves & Much More!



**NOX-CRETE IS THE NORTH AMERICAN REPRESENTATIVE FOR SOCOMAP PRECAST FINISHING MACHINES**



# MOLDTECH FORMS AND EQUIPMENT

## HIGH-PERFORMANCE, COMPETITIVELY PRICED, CUSTOMIZED PRECAST EQUIPMENT

Moldtech offers innovative solutions to precast and prestressed facilities with a full-service approach, including design, manufacture, on-site installation/test production and after-sales service. With projects executed in more than 50 countries on 5 continents, Moldtech can truly bring unparalleled value to your precast facility.

With 30 years of experience and an ISO 9002-certified manufacturing facility, Moldtech has the innovation and



EQUIPMENT FOR PRECAST CONCRETE PLANTS

capability to manufacture forms and equipment to meet the precast and prestressed concrete industries' most difficult challenges.



NOX-CRETE IS THE NORTH AMERICAN REPRESENTATIVE FOR MOLDTECH PRECAST FORMS & EQUIPMENT

## HISTORY



**CARL LINN IN THE LABORATORY**



**DEACTIVATOR • FORM COATING**

### THE CONCRETE CHALLENGE

In 1956, while working for a lubricant company, chemist Carl Linn observed precast producers using the company's oil and grease compounds to prevent concrete from bonding to forms. Not only were the compounds difficult to work with, but concrete build-up and splatter continued to accumulate on form surfaces and concrete surfaces appeared stained and discolored. Precast producers struggled with these issues for years, but Linn had an idea.

### OUR CHEMICAL SOLUTIONS

Carl developed a chemically active release agent, Nox-Crete Form Coating, and a chemically active form equipment maintenance product, Deactivator. With Nox-Crete Form Coating, precast producers produced better looking concrete and spent less time cleaning their forms.

With Deactivator, concrete buildup was safely and easily removed from mixers, conveyors and equipment. And so, Nox-Crete's passion for solving concrete professionals' challenges was born.

### STILL INNOVATING WORLDWIDE

Today, Nox-Crete continues to manufacture chemical solutions to concrete problems. While still manufacturing the original Nox-Crete Form Coating and Deactivator, we have expanded our product line to include over 100 different products spanning six different market segments that are sold through a worldwide network of distributors and dealers.

Following Carl Linn's example, we continue to rely on our customers for new product ideas. Our chemists and engineers examine field problems and develop solutions in our laboratory.

This passion for innovation is found in the quality and performance of all Nox-Crete products.

### CONCRETE MARKETS WE SERVE

- Precast
- Forming
- Tilt-Up
- Flooring
- Decorative
- Curing
- Waterproofing
- Plywood form OEM
- Application Equipment
- Equipment Maintenance
- Grouts and Repair Mortars



chemical solutions to concrete problems

