



# COMMERCIAL INSULATION PRODUCT PORTFOLIO

FIBERGLAS™ | FOAMULAR® | THERMAFIBER® | FOAMGLAS®

# TABLE OF CONTENTS

INSULATION OVERVIEW .....	3
FIBERGLAS™ SOLUTIONS.....	4-5
FOAMULAR® SOLUTIONS.....	6-7
THERMAFIBER® SOLUTIONS .....	8-9
FOAMGLAS® SOLUTIONS.....	10-11
ENCLOSURE SOLUTIONS.....	12
INSULATION SOLUTIONS SUITE .....	13
OWENS CORNING LOCATIONS.....	15



# OWENS CORNING IS YOUR TRUSTED RESOURCE FOR COMMERCIAL BUILDING INSULATION SOLUTIONS

Owens Corning delivers high-performance insulation solutions through a full line of fiberglass, foam XPS, mineral wool, and cellular glass products suitable for any commercial building application.



Acoustic



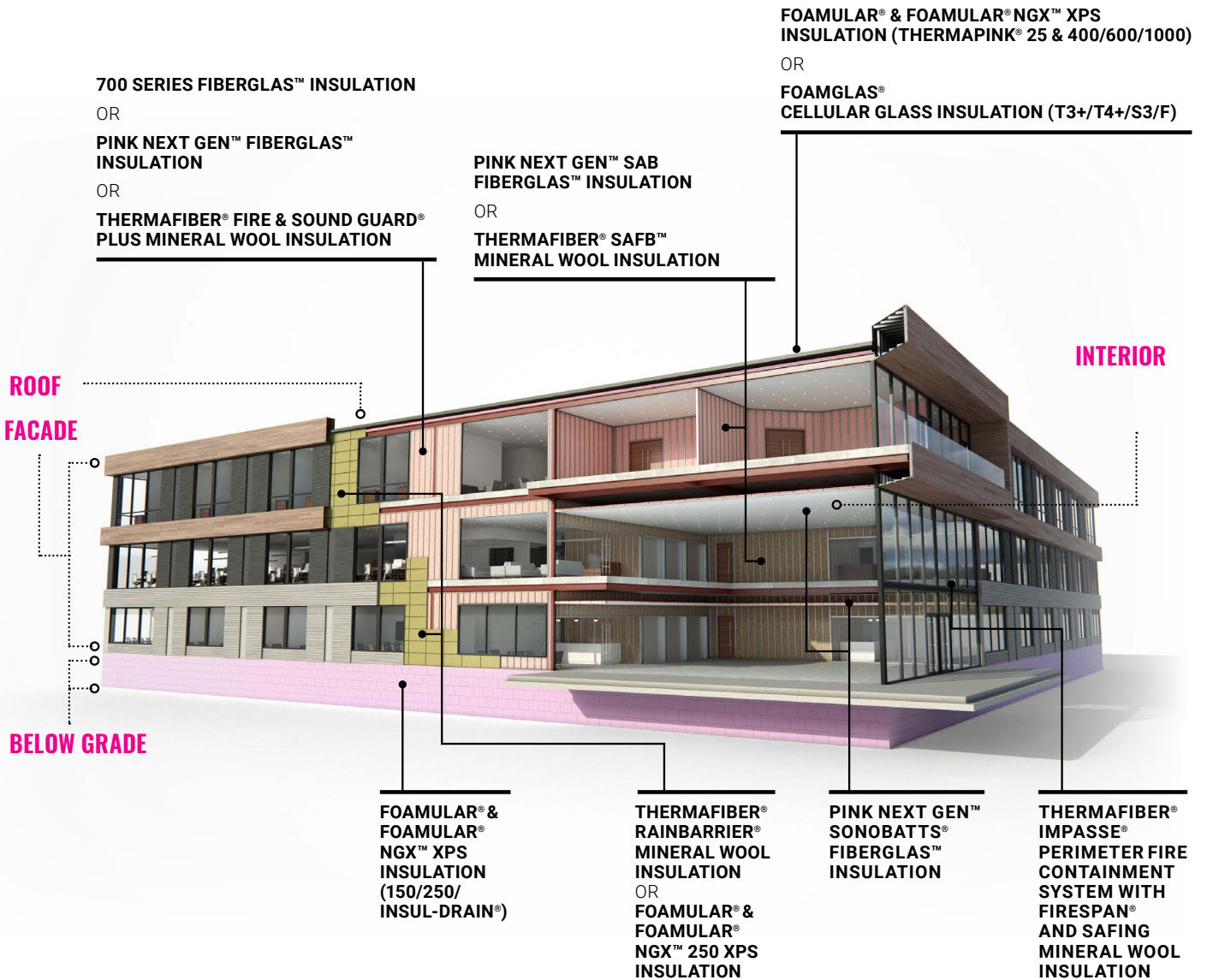
Thermal



Moisture



Fire





# FIBERGLAS™ SOLUTIONS

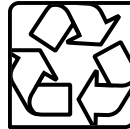
As a versatile material, fiberglass insulation plays many roles in creating high-performing buildings, improving energy efficiency, reducing sound, and optimizing comfort.

The Owens Corning® Fiberglas™ insulation family offers a solution tailored to a desired purpose. From making a hospital or multi-family building quiet, helping to protect the mechanical systems that keep systems running and occupants comfortable, Owens Corning® Fiberglas™ insulation brings trusted performance to the insulating challenge.



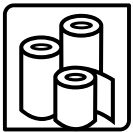
### Trusted performance

Owens Corning® Fiberglas™ products are available in a range of R-values to suit the demands of the project. Highly stable and resistant to moisture and mold, Owens Corning® Fiberglas™ helps maintain insulating performance.



### Sustainability

Owens Corning® Fiberglas™ insulation products are made using recycled content, and many are certified for 100% renewable electricity. Featuring low VOC options, such as formaldehyde-free formulations, all to help you build with sustainability in mind and earn valuable green building credits.



### A spectrum of options

Walls, ceilings, ducts, and pipes; rigid boards and soft batts — whatever you need to insulate and however you want to do it, Owens Corning® Fiberglas™ insulation offers options that add to your building's design and performance.



### Confidence

It comes down to trust. Owens Corning iconic Fiberglas™ insulation is trusted to perform and backed by some of the industry's best warranties.

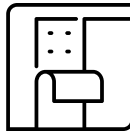
## PINK NEXT GEN™ FIBERGLAS™ INSULATION

Developed with building science smarts, PINK Next Gen™ Fiberglas™ insulation combines trusted thermal and acoustic performance with easy installation and a variety of benefits.



### Formaldehyde-free

Holds firm with no added formaldehyde.



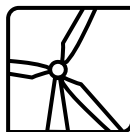
### Easy to install

Easy to cut and place between studs with enhanced recovery.



### Excellent thermal comfort

Insulates to meet codes and your standards.



### Renewable electricity

The only batts made with 100% renewable electricity.<sup>2</sup>



### Sound control

Improves Sound Transmission Class (STC) of walls and floors, and reduces reverberation in interior spaces.

<sup>1</sup> <https://insulationinstitute.org/wp-content/uploads/2016/02/NAIMA024.pdf>.

<sup>2</sup> Via Power Purchase Agreements in accordance with SCS Global Services' certification protocol.



# FIBERGLAS™

## METAL BUILDING INSULATION (MBI)

Owens Corning® Metal Building Insulation products are GREENGUARD GOLD certified, light-density fibrous glass blankets with excellent recovery, designed for use in metal building roofs and walls. They are available in a variety of densities, thicknesses, R-values, and laminating capabilities to meet a variety of building needs and code requirements.



## 700 SERIES FIBERGLAS™ INSULATION

Owens Corning® 700 Series semi-rigid or rigid boards are used for a variety of thermal and acoustical insulation jobs. The 700 Series boards reduce heat transfer, lower operating costs,<sup>3</sup> and efficiently reduce sound transmission.

## SELECTSOUND® ACOUSTIC BLANKET AND BOARD

Owens Corning® SelectSound® Acoustic Blankets and Boards are used for a variety of acoustical insulating applications, including exposed applications. The durable black facing creates a neat finished appearance that minimizes light reflection. SelectSound® products can be mounted to drywall, concrete block, precast concrete, and more and is ideal for theaters, restaurants, schools, and other acoustically sensitive environments.



## MECHANICAL AND AIR DISTRIBUTION INSULATION

With a variety of insulation solutions for the mechanical space, Owens Corning is a world leader in building materials and systems. Our products include Fiberglas™ Pipe Insulation, UtiliCore® Insulation, SoftR® Duct Wrap, QuietR® Duct Board, QuietR® Rotary Duct Liner and more. We have an insulation solution for virtually any building situation.

Learn more at [owenscorning.com/fiberglas](http://owenscorning.com/fiberglas).

<sup>3</sup> Savings vary. Find out why in the seller's fact sheet on R-values. Higher R-values mean greater insulating power.



# FOAMULAR® NGX® SOLUTIONS

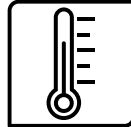
Durable. Versatile. Resistant. Owens Corning® FOAMULAR® NGX® is a high-performing insulation, trusted by architects, engineers, builders, and contractors to deliver insulating power and moisture resistance. FOAMULAR® NGX® is well suited to meet the needs for a wide variety of building applications.

FOAMULAR® NGX® offers several performance advantages over other insulation options. The complete portfolio of FOAMULAR® NGX® insulation products, available in a variety of thicknesses and compressive strengths, helps protect roofs, foundations, and walls – offering solutions for nearly any enclosure insulation need.



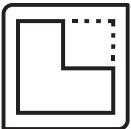
### Exceptional moisture resistance

Virtually impervious to moisture. FOAMULAR® NGX® has up to 13X more resistance to water than EPS insulation.



### High, stable R-values

Retains a minimum of 90% of R-value over 20 years, even when exposed to moisture or decreasing temperatures.



### Easy installation

Lightweight and easy to handle, score, cut, and install. FOAMULAR® NGX® products are compatible with common exterior claddings and finishes, as well as other manufacturers' products and hanging systems.



### Durability

Manufactured to comply with ASTM C578,<sup>5</sup> FOAMULAR® NGX® insulation holds its strength, accepting design loads with little deformation. For example, FOAMULAR® NGX® is the ideal choice in Protected Roof Membrane Assemblies (PRMA) for vegetative roofs, withstanding wet soils and loads, and aiding in run-off management.

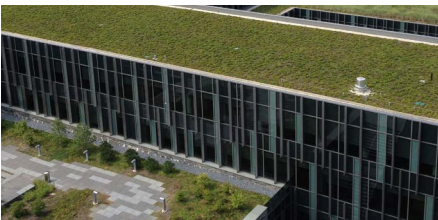


### Sustainability

Helps you achieve valuable LEED<sup>®4</sup> credits and is certified by the UL under the GREENGUARD Standard for Low Emitting Products and also meets low global warming potential blowing agent requirements.



## FOAM APPLICATION



### XPS IN VEGETATIVE ROOF ASSEMBLIES

#### Strength that lets designs flourish

Vegetative roof assemblies (VRAs) are both beautiful and functional. Whether designed to meet storm water ordinances, provide a refuge for wildlife, or as spaces for outdoor leisure, VRAs require careful design and materials that can resist severe exposure and extreme pressures. See why FOAMULAR® NGX® is the gold standard of insulation for VRAs using PRMA (Protected Roof Membrane Assembly) design.



### XPS FOR CONCRETE CONSTRUCTION

#### Making construction efficient and durable

Insulated concrete construction, such as precast, site-cast, and tilt-up, deliver an affordable, efficient option for commercial building design. FOAMULAR® NGX® insulation complements that efficiency for designs that are as functional as they are innovative.



### XPS FOR GEOTECHNICAL APPLICATIONS

#### Supporting the foundation of a great design

For engineered applications requiring additional load-resistance capabilities, FOAMULAR® NGX® delivers high strength and durability. Under roadways, runways, and in building foundations, FOAMULAR® NGX® provides reliable R-values and stability in challenging environments and under high structural demands.

4 LEED is a registered trademark of U.S. Green Building Council.

5 ASTM C578-06. Standard Specification for Rigid, Cellular Polystyrene Thermal Insulation: ASTM International, 100 Barr Harbor Drive, PO Box C700, West Conshohocken, PA.



# FOAMULAR® NGX®

## FOAMULAR® NGX™



### Over 80% Reduction in GWP

Delivers over 80% reduction in product global warming potential (GWP).<sup>6</sup>



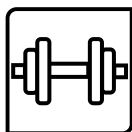
### Low water absorption

Extremely low water absorption potential, delivering superior R-value retention in the presence of water.



### Eliminates HFC 134a

Completely eliminates use of HFC 134a.



### Handles heavy loads

A wide range of compressive strengths — up to 100 psi — to handle heavy loads.



### Energy efficiency

Excellent energy efficiency in the form of a high R-5 per inch.



### Limited Lifetime guarantee

R-value for the life of the product.

Learn more at [owenscorning.com/foamular-ngx](http://owenscorning.com/foamular-ngx).

## FOAMULAR® NGX® 250 ALL PURPOSE

Ideal for above- and below-grade residential and commercial applications, such as perimeter/foundation, cavity wall, precast concrete, under slab, and other applications such as roofs and parking garages

## FOAMULAR® NGX® INSUL-DRAIN FOUNDATION DRAINAGE

Designed specifically for foundations to maintain R-value and drainage relieving hydrostatic pressure. Fabric-covered channels drain water from vertical foundation walls.

## FOAMULAR® NGX® 400/600/1000 HIGH LOAD APPLICATIONS

Designed for use in engineered applications requiring additional load-bearing capability. Also available in tapered material to enhance drainage or to reverse roof slope.

## FOAMULAR® NGX® THERMAPINK® 25 COMMERCIAL ROOFING APPLICATIONS

Specifically designed for roofing applications, also available in tapered materials to enhance drainage or to reverse roof slope.

Learn more at [owenscorning.com/foamular](http://owenscorning.com/foamular).

<sup>6</sup> Impact measured over 100-year time horizon, as compared to legacy FOAMULAR® formulation.



# THERMAFIBER® SOLUTIONS

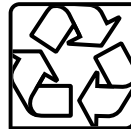
Owens Corning® Thermafiber® is a leading manufacturer of mineral wool insulation products. From its inception, Thermafiber® has been dedicated to improving fire protection by manufacturing mineral wool insulation. Thermafiber® offers commercial and residential mineral wool products that conserve energy, control sound, and provide fire protection.

Our mineral wool contains a minimum of 70% recycled content<sup>7</sup> and is non-combustible, inorganic, and mold-resistant. Thermafiber® continues to be the #1 specified brand of commercial mineral wool.<sup>8</sup>



### Fire Resistant

Non-combustible per ASTM E136 and can resist temperatures in excess of 2,000°F in certain fire-rated applications.



### Sustainability

70% minimum recycled content and contributes to credits in several green building programs, such as LEED®<sup>5</sup>



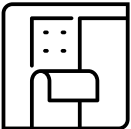
### Mold Resistant

Resists mold, fungi, and vermin due to being an inorganic material.



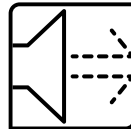
### Thermal Comfort

Up to R-4.3 per inch of thickness contributes to energy efficiency and will not decrease as the insulation ages.



### Ease of Installation

As a semi-rigid product that is easy to cut and install, its flexibility allows it to conform to building shapes and construction irregularities.



### Sound Control

Helps control noise between floors, through walls, and from outdoors.

## THERMAFIBER® SAFB™ (SOUND ATTENUATION FIRE BLANKETS) INTERIOR WALL

Designed to provide acoustical control and fire protection in many UL® fire-rated wall and floor-ceiling assemblies in both steel-stud and wood-stud construction. SAFB™ is also available in a formaldehyde-free formulation for architects, specifiers, and contractors interested in achieving green building standards.

## THERMAFIBER® RAINBARRIER® CONTINUOUS INSULATION

Designed for exceptional performance in rainscreen and exterior cavity wall construction applications. With a full portfolio of ci products and a wide range of compressive strengths, Thermafiber® RainBarrier® mineral wool insulation has a solution available for many façade types while being compatible with various mechanical attachment methods and air barrier systems.

Semi-Rigid Boards:

- RainBarrier®
- RainBarrier® Dark™

Rigid Sheathing Boards:

- RainBarrier® ci High Compressive (80)
- RainBarrier® ci High Compressive Plus (110)
- RainBarrier® ci High Compressive Max (140)

<sup>7</sup> Verified by ICC-ES to contain a minimum of 70% recycled content. See ICC-ES Evaluation Report VAR-1025 at icc-es.org.

<sup>8</sup> Dodge Data & Analytics Spec Rates 2019-2023



## **THERMAFIBER® FIRESPAN®**

### **CURTAIN WALL**

Designed to provide enhanced fire protection in curtain wall and perimeter fire containment systems. FireSpan® products are also available in a formaldehyde-free formulation and are especially appropriate for applications in education, healthcare, and other institutions committed to indoor air quality.

## **THERMAFIBER® SAFING**

### **FIRE CONTAINMENT**

Designed to provide enhanced fire protection in perimeter fire containment systems, floor and wall penetrations, construction joints, and other firestopping applications. Safing products are also available in a formaldehyde-free formulation and are especially appropriate for applications in education, healthcare, and other institutions committed to indoor air quality.

## **THERMAFIBER® IMPASSE® SYSTEM**

### **PERIMETER FIRE CONTAINMENT**

Patented design that streamlines the installation of curtain wall insulation by changing the order of traditional installation steps to fit a more logical progression with Thermafiber® Impasse Hangers and Locking Washers.

## **THERMAFIBER® VERSABOARD®**

### **MULTI-PURPOSE**

Multi-purpose insulation providing an outstanding combination of fire-resistive characteristics, enhanced acoustical performance, thermal performance, moisture resistance, and energy conservation for various commercial construction applications, including but not limited to parking garage under decking and mechanical rooms.

## **THERMAFIBER® TOPSTOP®**

### **HEAD-OF-WALL**

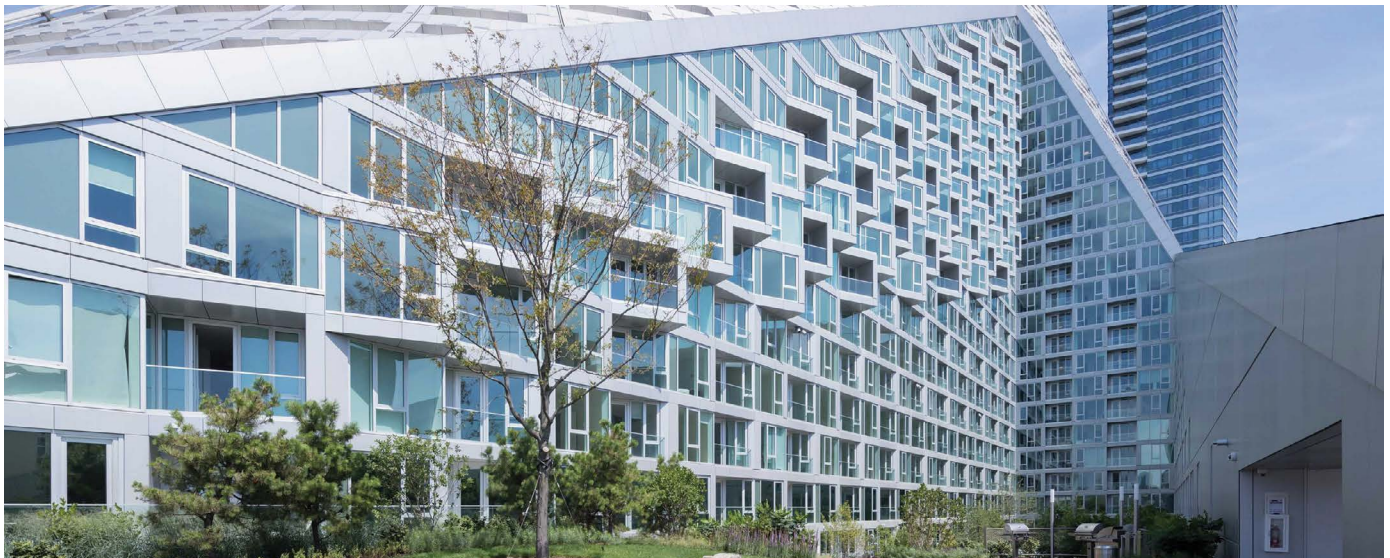
Trapezoidal-shaped head-of-wall insulation boards and forming strips are designed to provide fire containment in head-of-wall joint constructions. These come in various sizes, and custom sizing is also available upon request.

## **THERMAFIBER® FIRE & SOUND GUARD® PLUS**

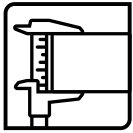
### **EXTERIOR & INTERIOR WALL**

Designed to provide excellent thermal, noise control, and fire resistance in residential and light commercial construction.

**Learn more at [owenscorning.com/thermafiber](https://www.owenscorning.com/thermafiber).**



FOAMGLAS® cellular glass insulation is a lightweight, rigid, and durable material composed of completely sealed glass cells. It's non-combustible, provides superior compressive strength, moisture resistance, dimensional stability, and offers long-lasting thermal performance. A wide range of shapes and sizes are available for building, equipment, and industrial specifications.



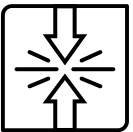
### Dimensionally Stable

- Similar expansion and contraction to concrete and steel decks creating less strain on roof membranes.
- Will not compress or deform, leading to tears or punctures.



### Vapor Impermeable

- Prevents the passage of water vapor and other gases.
- Contributes to the prevention of condensation as a vapor barrier material.
- Insulation will not accumulate moisture over time.



### High Compressive Strength

- Designed to withstand loads that crush most other insulation materials.
- Can reduce thermal bridges where other conductive load-bearing material was once required.
- Suitable for parking and plaza decks and green roofs.



### Watertight

- 100% closed-cell material.
- Will not absorb water.
- No warping or swelling.
- Membrane leaks remain isolated and are easy to repair.



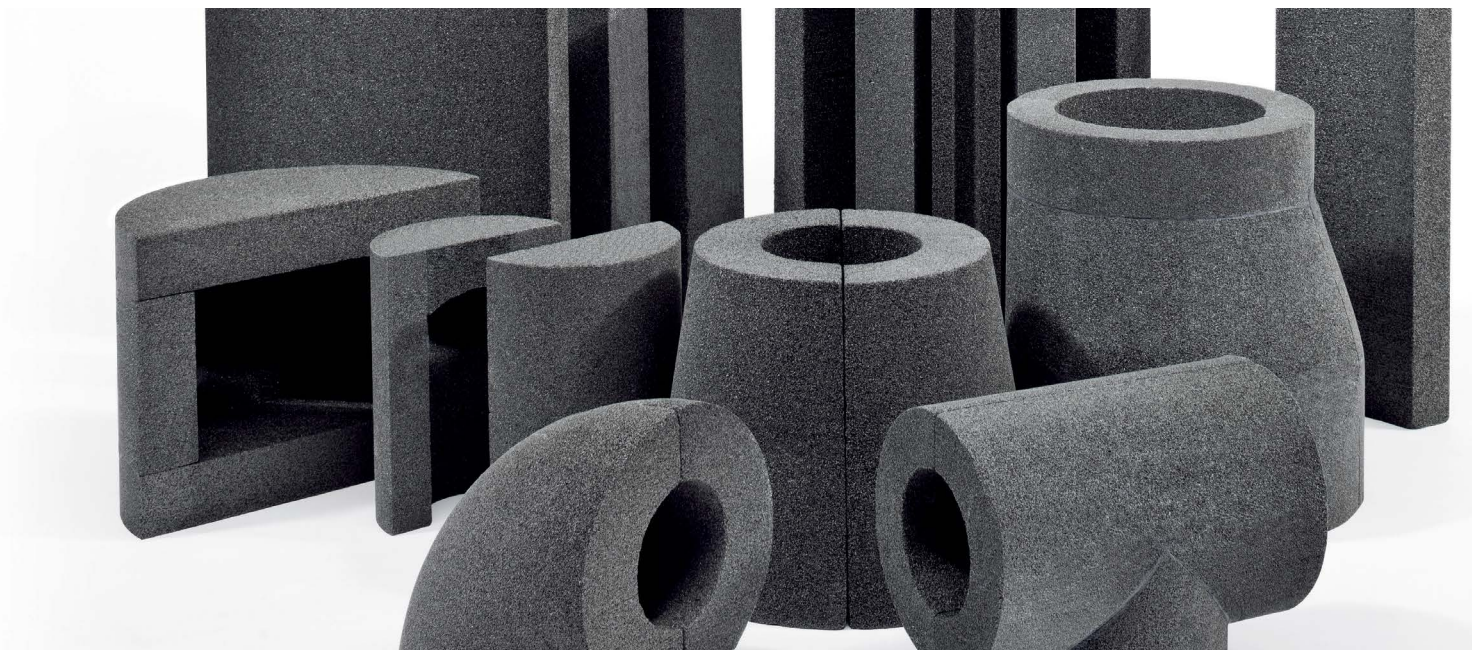
### Non-Combustible

- Made from glass.
- Zero flame spread and smoke developed.<sup>9</sup>



### Rot and Insect Resistant

- Inorganic.
- Not a source of food for rodents, insects, or micro-organisms.



<sup>9</sup> For unfaced products.



## FOAMGLAS® T3+

FOAMGLAS® T3+ cellular glass insulation is a closed cell, high-performance, rigid foam specifically designed for building and roofing applications. It provides a unique combination of properties that offer an alternative to other types of building insulation.

## FOAMGLAS® S3

FOAMGLAS® S3 cellular glass insulation is a closed cell, high-performance, rigid foam board specifically designed for plaza and roofing applications. It provides a unique combination of properties that offer an alternative to other types of building insulation. For use where high loads and equipment vibration are present.

## FOAMGLAS® PERINSUL® SIB STRUCTURAL INSULATING BLOCK

FOAMGLAS® PERINSUL® SIB Cellular Glass Structural Insulating Block is a high-compressive-strength, rigid insulating block that creates a continuous thermal barrier at the base of masonry veneer exterior walls for net zero ready and other high-performance buildings.

**Learn more at [owenscorning.com/foamglas](https://www.owenscorning.com/foamglas).**

## FOAMGLAS® T4+

FOAMGLAS® T4+ cellular glass insulation is a closed cell, high-performance, rigid foam specifically designed for building and roofing applications. It provides a unique combination of properties that offer an alternative to other types of building insulation. FOAMGLAS® T4+ insulation is designed for use where mechanical attachment is required.

## FOAMGLAS® F

FOAMGLAS® F cellular glass insulation is a closed cell, high-performance, rigid foam specifically designed for split-slab and roofing applications. It provides a unique combination of properties that offer an alternative to other types of building insulation. For use where extremely high loads and equipment vibration are present.





# ENCLOSURE SOLUTIONS

## HELP PROTECT YOUR BUILDING AND YOUR REPUTATION

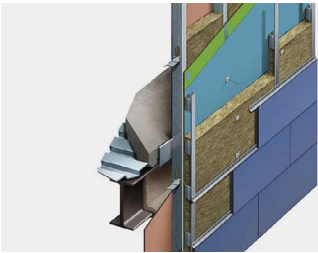
Owens Corning® Enclosure Solutions deliver one of the largest portfolios of commercial insulation products for walls, roofs and below-grade foundations, covering a range of construction types with customizable components you can select to fit the needs of your project. Best of all, it's backed by the expert advisors and technical resources of Owens Corning.

It's solutions for you, simplified.

[Owens Corning Enclosure Solutions Brochure](#)

[NFPA 285 Design Guide](#)

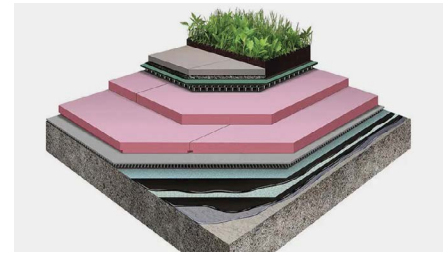
[PRMA-01 Design Guide](#)



Walls



Below-Grade



Roofs

## PROJECT SPOTLIGHT



Edith Green-Wendell Wyatt Federal Building



150 North Riverside



Park Tower At Transbay



181 Fremont



Chicago River Point



Kent State College of Architecture and Environmental Design



VIA 57 West



San Francisco Museum of Modern Art



One World Trade Center



Ronald McDonald House



University of Michigan North Quad



Kansas City Art Institute

[Learn more at owenscorning.com/enclosure.](http://owenscorning.com/enclosure)



# INSULATION SOLUTIONS SUITE

## WE SOLVE PROBLEMS.

The Owens Corning Insulation Solutions Suite is a hub hosting curated content and thought leadership on the science behind high-performing buildings. Created to serve those charged with designing, constructing, and evaluating commercial enclosures, the Insulation Solutions Suite provides a lens for considering material science in context with the environment, codes and the communities a building serves. The ever-expanding content available on the Insulation Solutions Suite includes resources relevant to fire, moisture, acoustics, thermal, and environmental sustainability.



**Fire**



**Moisture**



**Acoustics**



**Sustainability**



**Thermal**

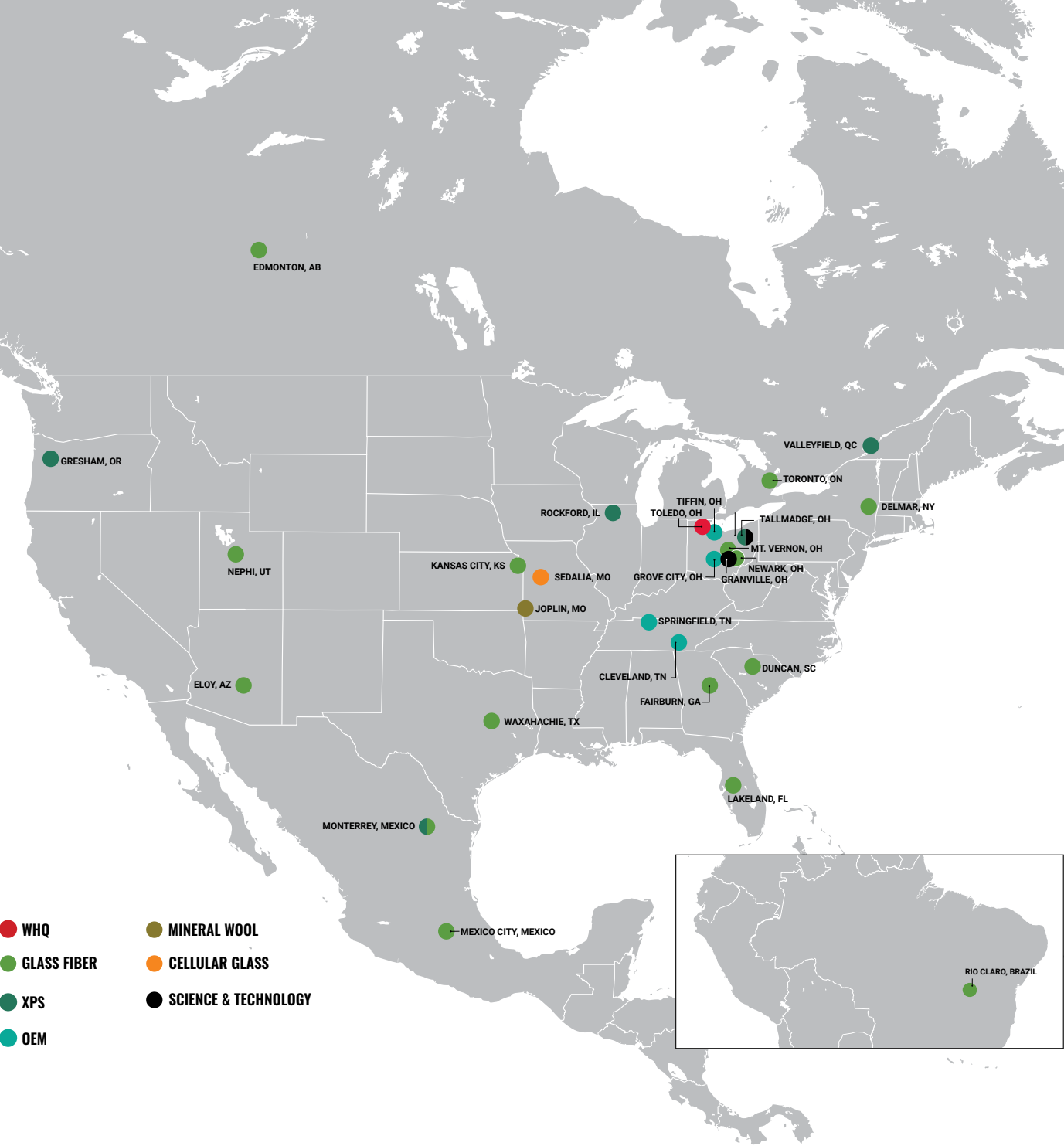


Learn more at [owenscorning.com/insulation/blog](https://www.owenscorning.com/insulation/blog)



# OWENS CORNING LOCATIONS

Owens Corning delivers high-performance insulation solutions through a full line of fiberglass, foam, and mineral wool products and systems. These products and system solutions help conserve energy, improve acoustics, and ease installation and use. These qualities add up to preferred insulation products for residential and commercial construction and industrial applications.





**For more information on the Owens Corning family of commercial insulation products, contact your Owens Corning dealer, call 1-800-GET-PINK®, or access our website: [www.owenscorning.com/insulation/commercial](http://www.owenscorning.com/insulation/commercial).**

**OWENS CORNING INSULATING SYSTEMS, LLC**  
ONE OWENS CORNING PARKWAY  
TOLEDO, OH 43659 USA

**1-800-GET-PINK®**  
[www.owenscorning.com](http://www.owenscorning.com)

**OWENS CORNING FOAM INSULATION, LLC**  
ONE OWENS CORNING PARKWAY  
TOLEDO, OH 43659 USA

**1-800-GET-PINK®**  
[www.owenscorning.com/foamular](http://www.owenscorning.com/foamular)

**THERMAFIBER, INC.**  
ONE OWENS CORNING PARKWAY  
TOLEDO, OH 43659 USA

**1-800-GET-PINK®**  
[www.owenscorning.com/thermafiber](http://www.owenscorning.com/thermafiber)

**PITTSBURGH CORNING, LLC**  
ONE OWENS CORNING PARKWAY  
TOLEDO, OH 43659 USA

**1-800-GET-PINK®**  
[www.owenscorning.com/foamglas](http://www.owenscorning.com/foamglas)